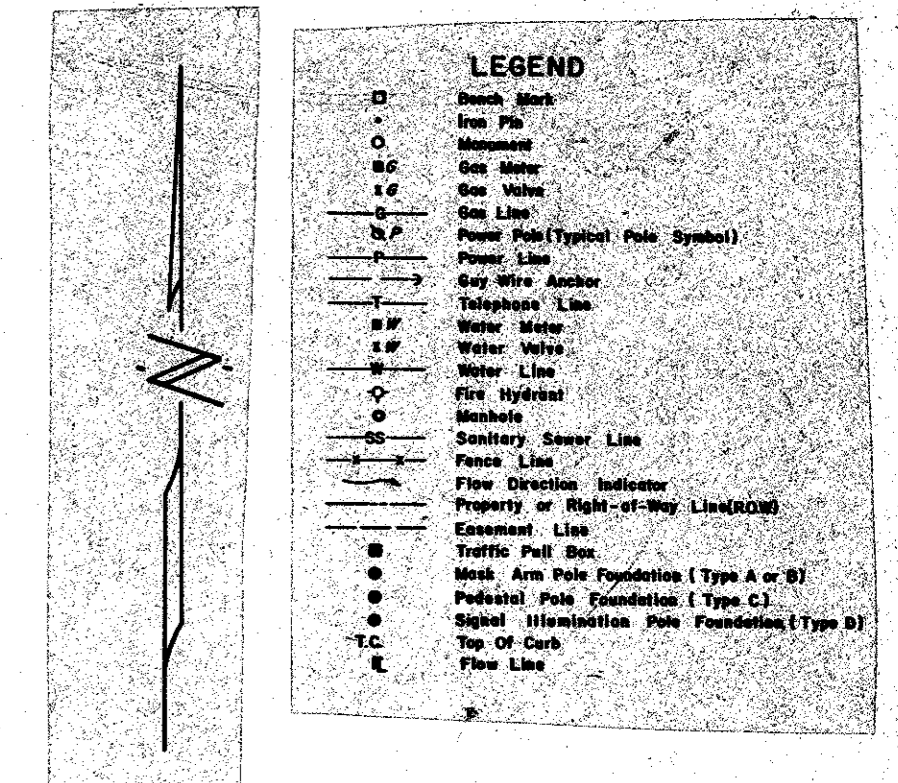
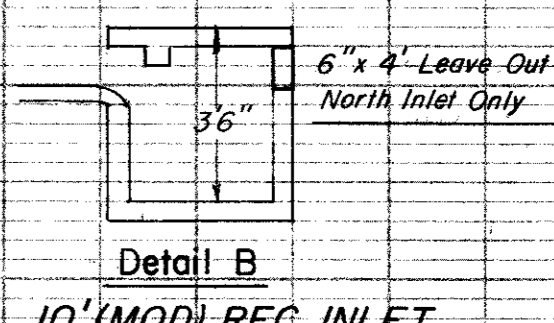
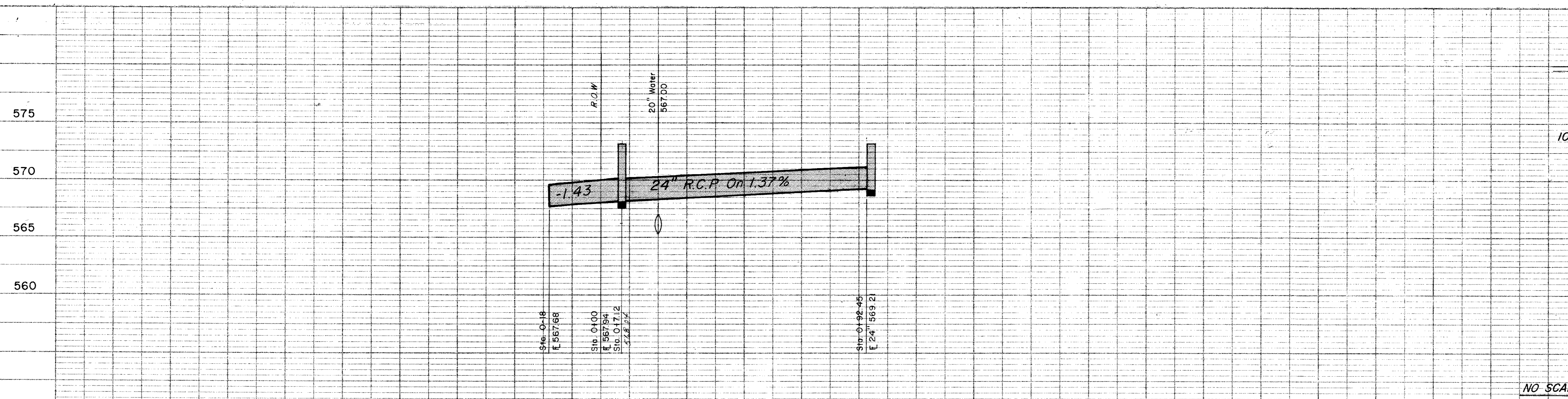


ESTIMATED QUANTITIES			
ITEM	DESCRIPTION	UNIT	QUANTITY
427.1	Conc. Headwall (C1-A)	CY	2.4
440.1	Reinforcing Steel	LB	245.0
465.4	30" R.C.P. C1 III	LF	241.0
465.5	18" R.C.P. C1 III	LF	174.0
465.5	24" R.C.P. C1 III	LF	248.0
470.2	10' Rect. Inlet-Comp. in pl.	EA	1.0
479.3	Adjust 20" Water Main	LF	30.0
496.4	Remove Existing 2-42" RCP	LF	1.0
496.5	Headwall & Junction Box	LS	1.0
496.6	10' (Mod.) Rect. Inlet-Comp. in Pl.	EA	1.0
496.5	Remove 54" R.C.P.	LF	255.0



B.M. # 14 R.R. Spike in 12" Willow Tree At 75' N.  
 (1) Y. Belt Line B 250' E (1) E. Old Marsh Lane, ELEV. = 576.32



NO SCALE

NO.	REVISION	DATE
2	Chg Location 24" R.C.P.	9-23-80
1	Inlets & Channel	6-13-80

**CITY OF ADDISON**  
**COUNTY OF DALLAS, TEXAS**  
 DEPARTMENT OF PUBLIC WORKS  
 DRAINAGE / STA. 5100 - 10100  
**BELT LINE ROAD**  
 MARSH LN. TO NORTH DALLAS PKWY  
 GINN, INC. CONSULTING ENGINEERS

DESIGNED: J.C.H. CHECKED: B.H. DATE: MAY 1980  
 APPROVED: HWG CHECKED: S.M. SCALE: H=1"=20' V=1"=5' SHEET: 32