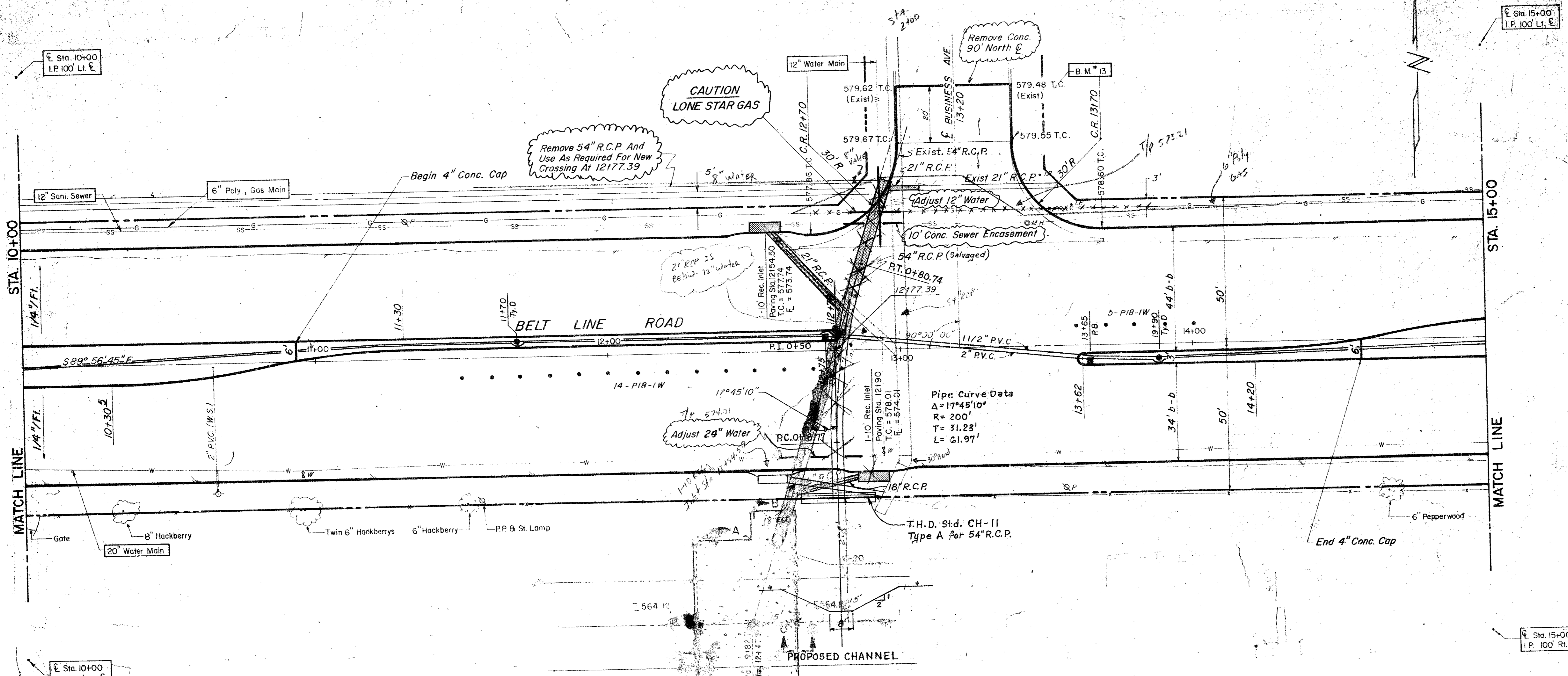
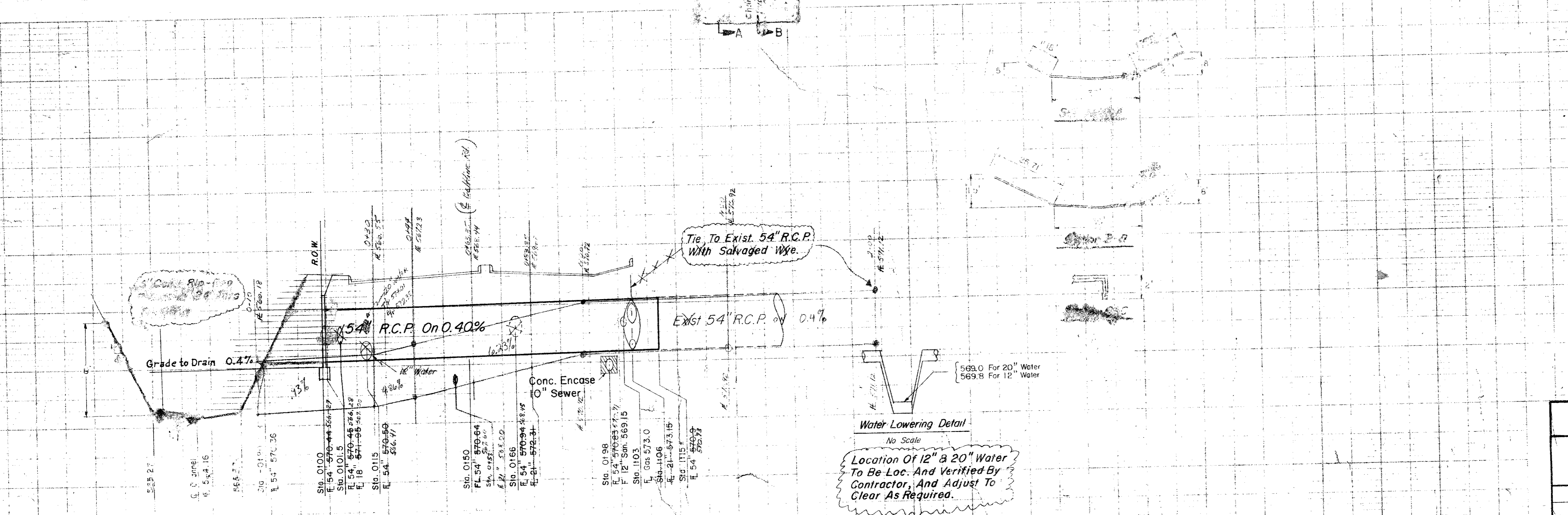


ESTIMATED QUANTITIES			
ITEM	DESCRIPTION	UNIT	QUANTITY
432	Conc. Rip-Rap	LS	22.00
479.7	Sewer Encasement / C.I. Pipe	LF	105.00
440.5	Reinf. Sheet (For Rip-Rap)	LF	105.00
465.1	18" R.C.P. C.I. III	LF	224.00
465.2	21" R.C.P. C.I. III	LF	38.00
470.2	10' Rec. Inlet Comp. In Pl.	EA	2.00
479.6	Adjust 12" Water	LF	40.00
479.3	Adjust 20" Water	LF	10.00
469.3	Remove 54" R.C.P.	LF	297.00
464.14	Relay 54" R.C.P.	LF	1350.00



**LEGEND**

- Bench Mark
- Top of Pipe
- Top of Manhole
- Top of Meter
- Top of Valve
- Top of Gas Line
- Top of Power Line
- Top of Telephone Line
- Top of Water Main
- Top of Water Valve
- Top of Water Line
- Top of Fire Hydrant
- Top of Sanitary Sewer Line
- Top of Fence Line
- Top of Floor Concrete
- Top of Property or Right-of-Way Line
- Existing Line
- Traffic Post
- New Air Pole Foundation (Type A or B)
- Existing Pole Foundation (Type C)
- Special Intermediate Pole Foundation (Type D)
- Top of Curb
- Flow Line



**CITY OF ADDISON**  
**COUNTY OF DALLAS, TEXAS**  
 DEPARTMENT OF PUBLIC WORKS

DRAINAGE STA. 10+00 - 15+00  
**BELT LINE ROAD**  
 MARSH LN. TO NORTH DALLAS PKWY.  
 GINN, INC., CONSULTING ENGINEERS

DESIGNED - A.C.F. DRAWN - S.M. DATE - JUNE - 1980 FILE  
 APPROVED - H.W.G. CHECKED - B.H. SCALE - H=1"=20' V=1"=5' SHEET 32A