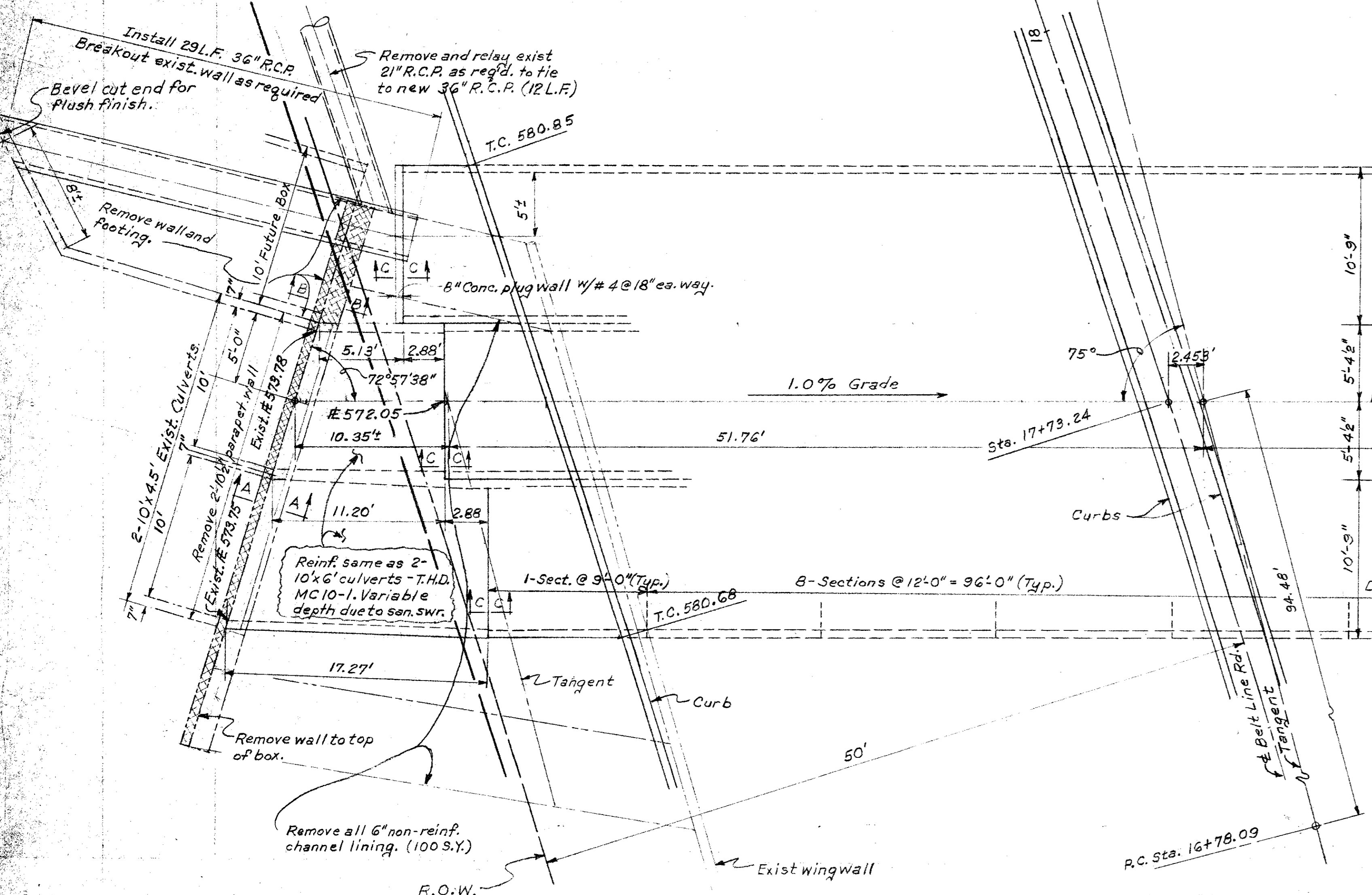
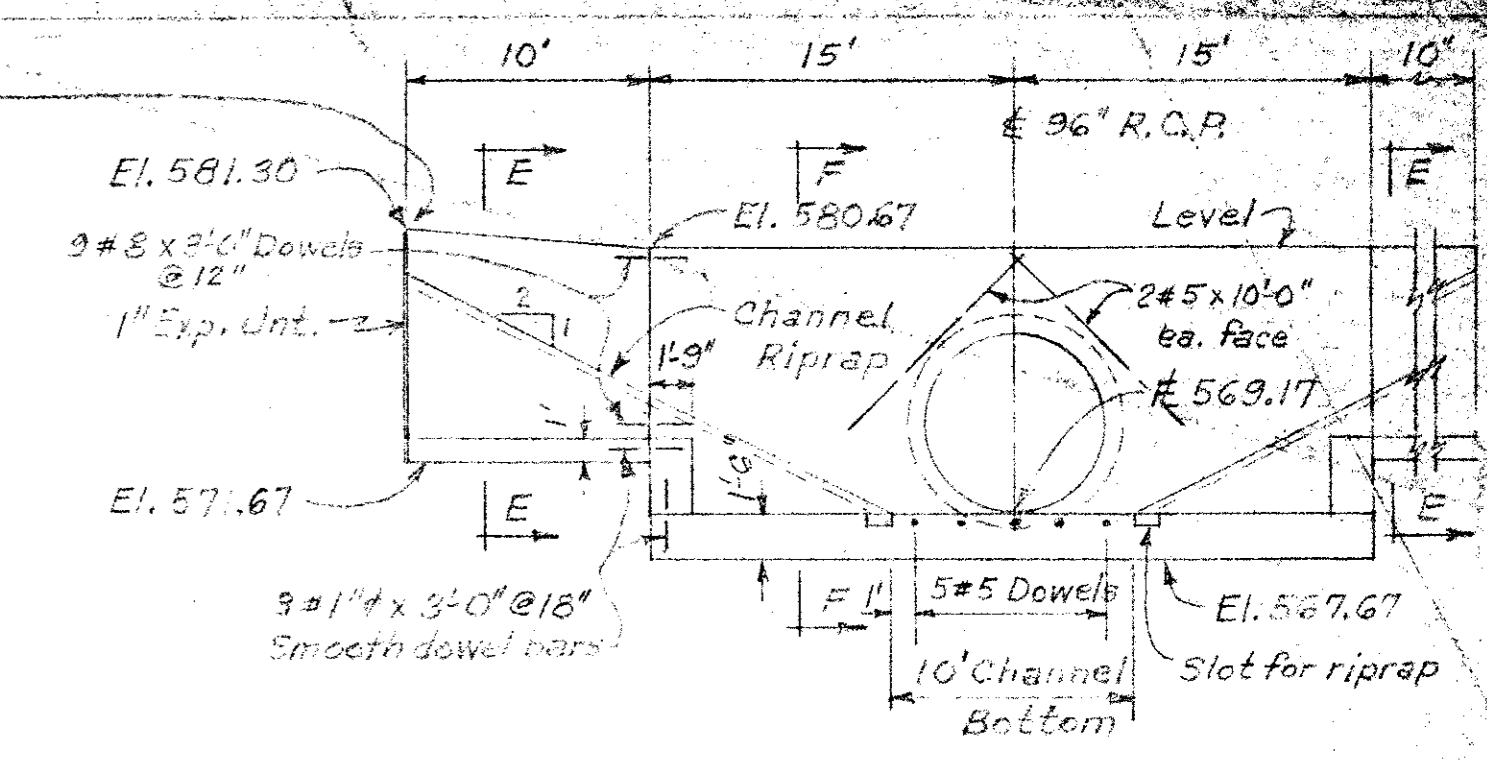


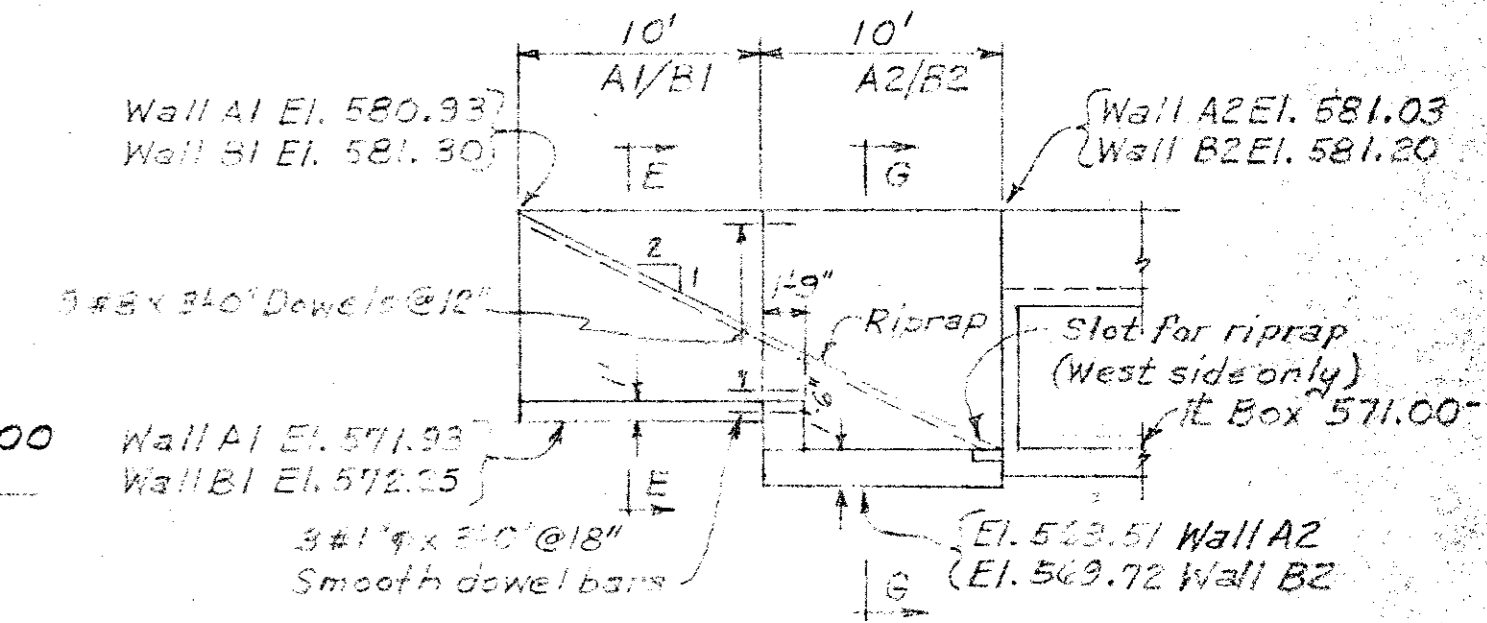
Approx. location 10" san. sewer. Locate prior to start of construction. Exist. sewer encased under riprap.



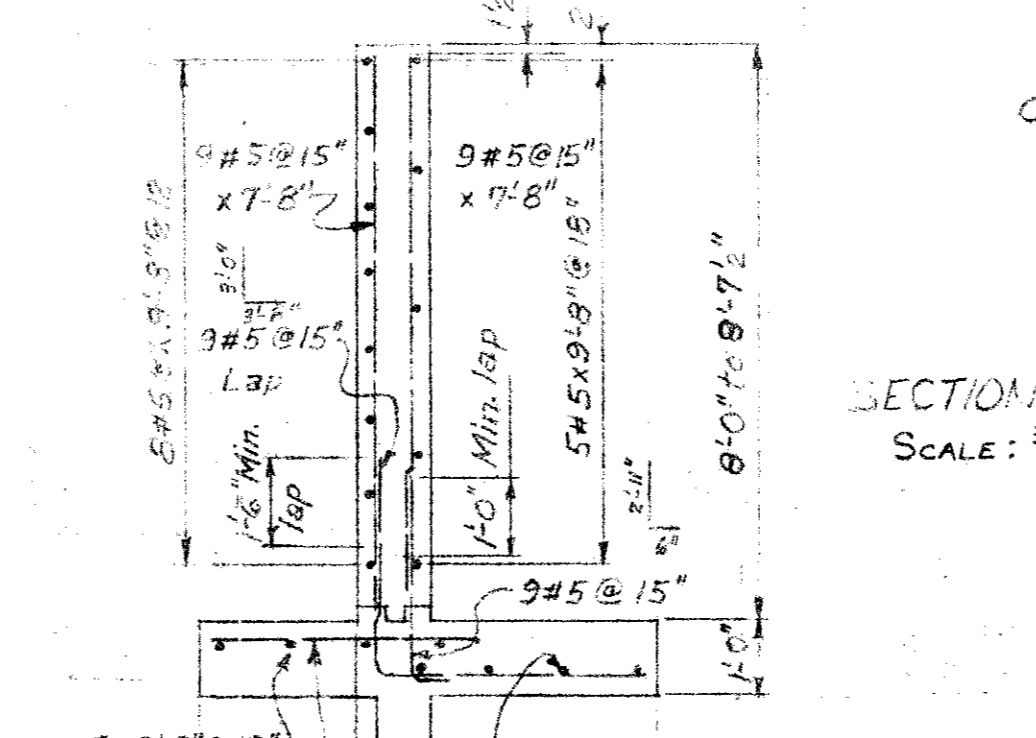
PLAN OF BOX CULVERT
Scale: 3/16" = 1'-0"



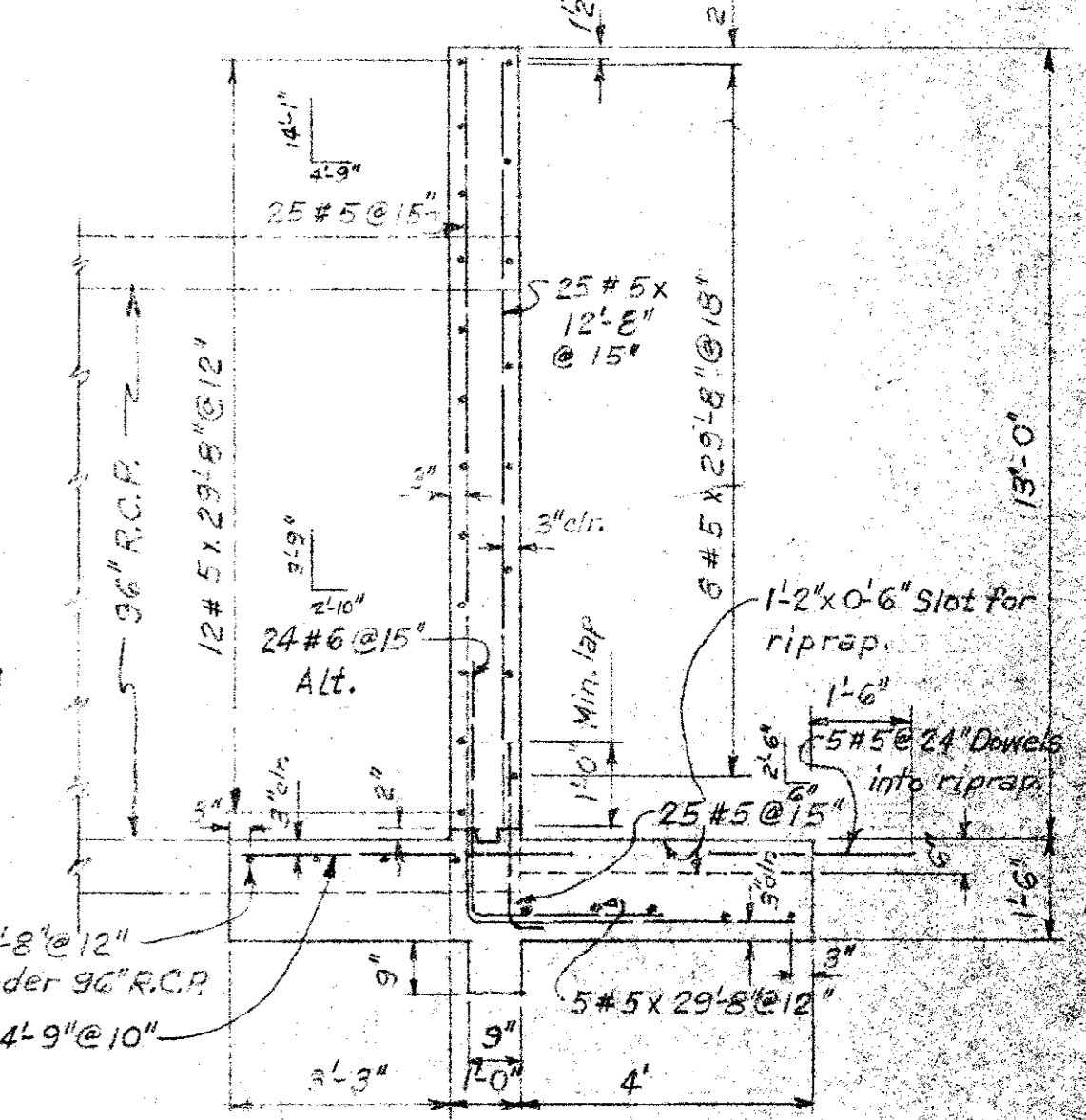
96" R.C.P. HEADWALL DETAIL
Scale: 3/8" = 1'-0"



RETAINING WALLS A & B DETAILS
Scale: 3/8" = 1'-0"

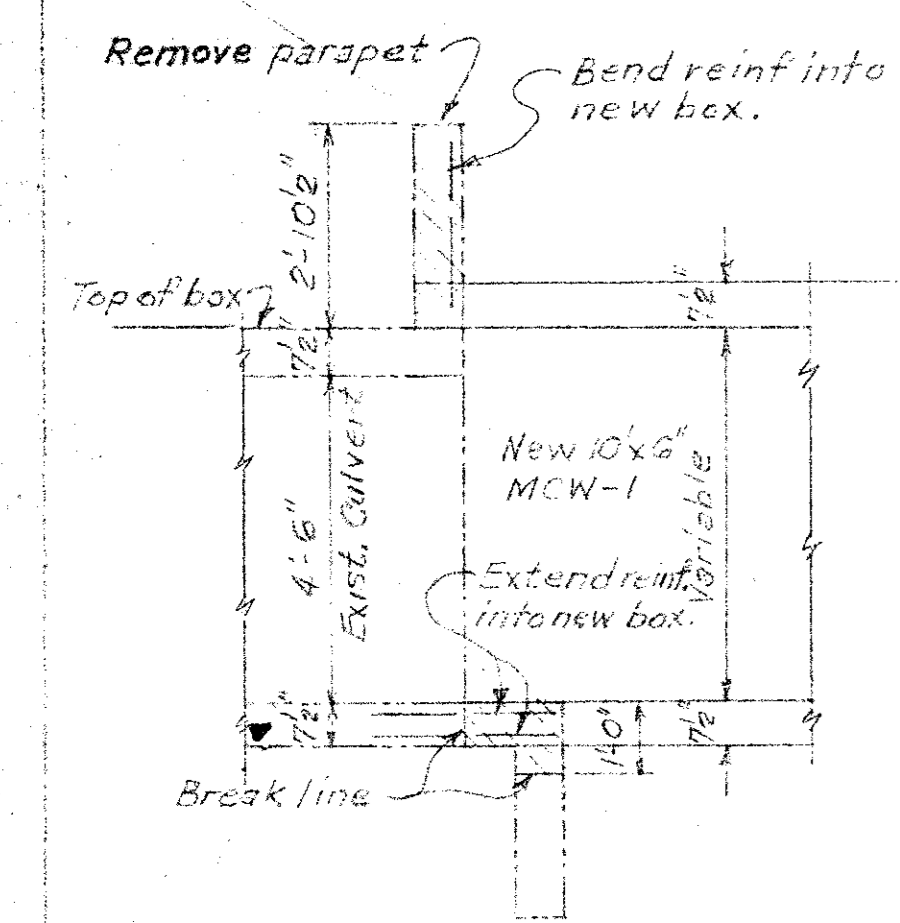


SECTION H-H
Scale: 3/8" = 1'-0"

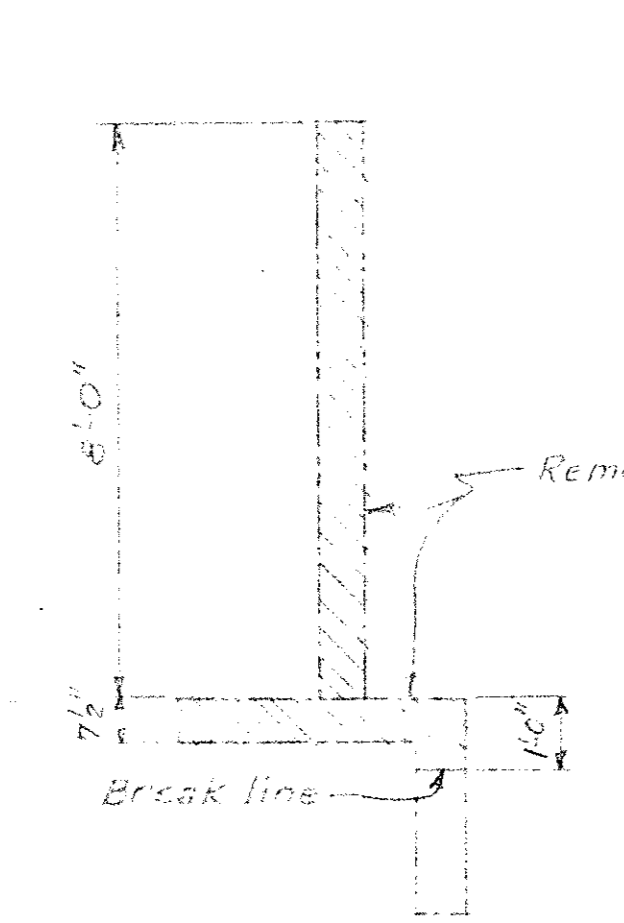


SECTION F-F
Scale: 3/8" = 1'-0"

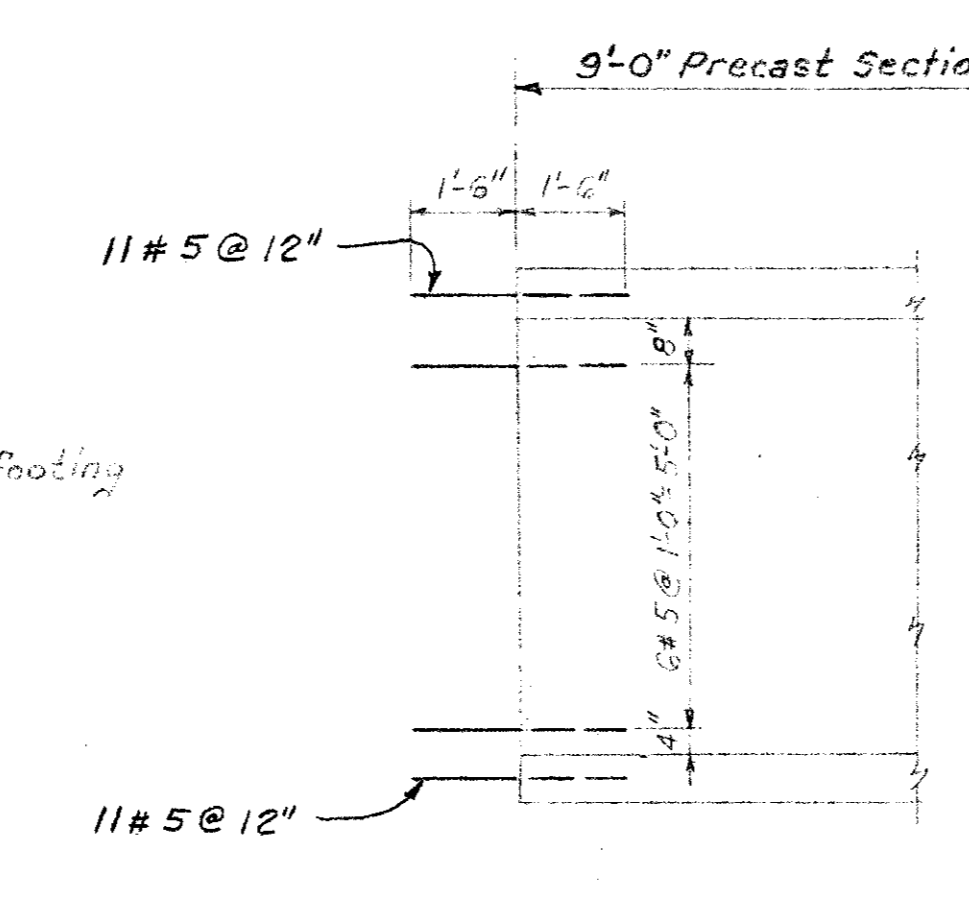
RETAINING WALL NOTES
All concrete to be Class C, f_c = 3000 psi in 28 days.
All reinf. steel to be A.S.T.M. Grade 60.
Concrete 644 C.Y.
Reinf. Steel 6061 LBS.



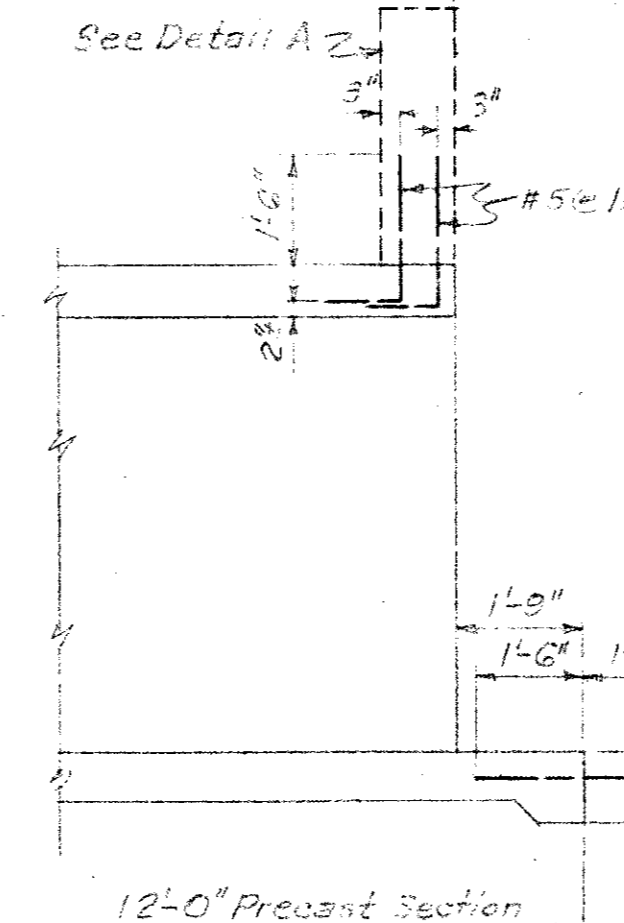
SECTION A-A



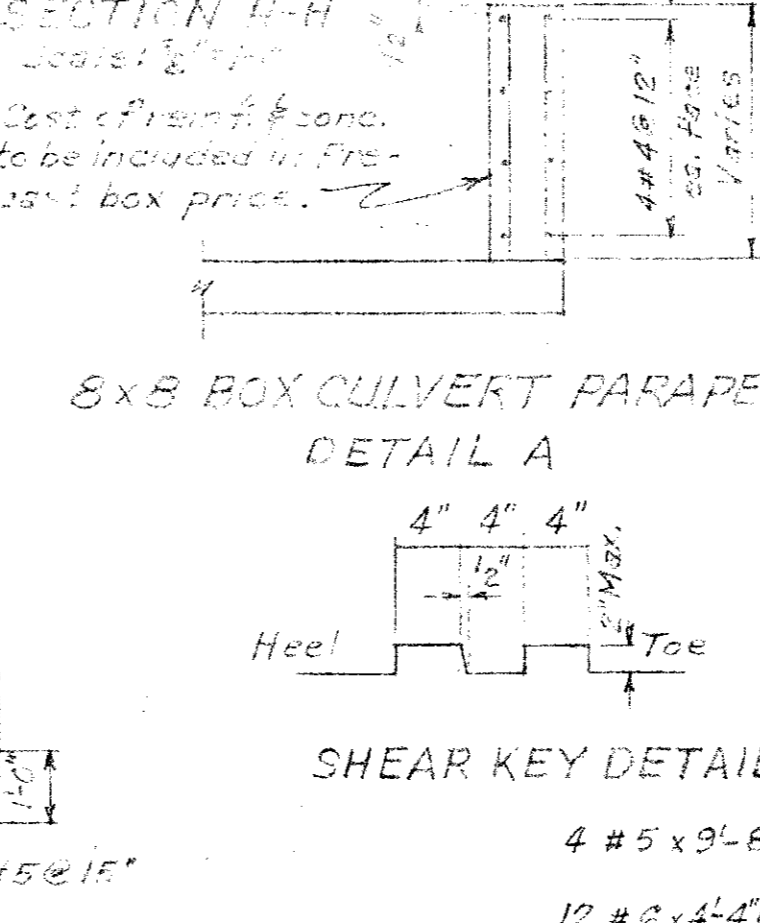
SECTION B-B



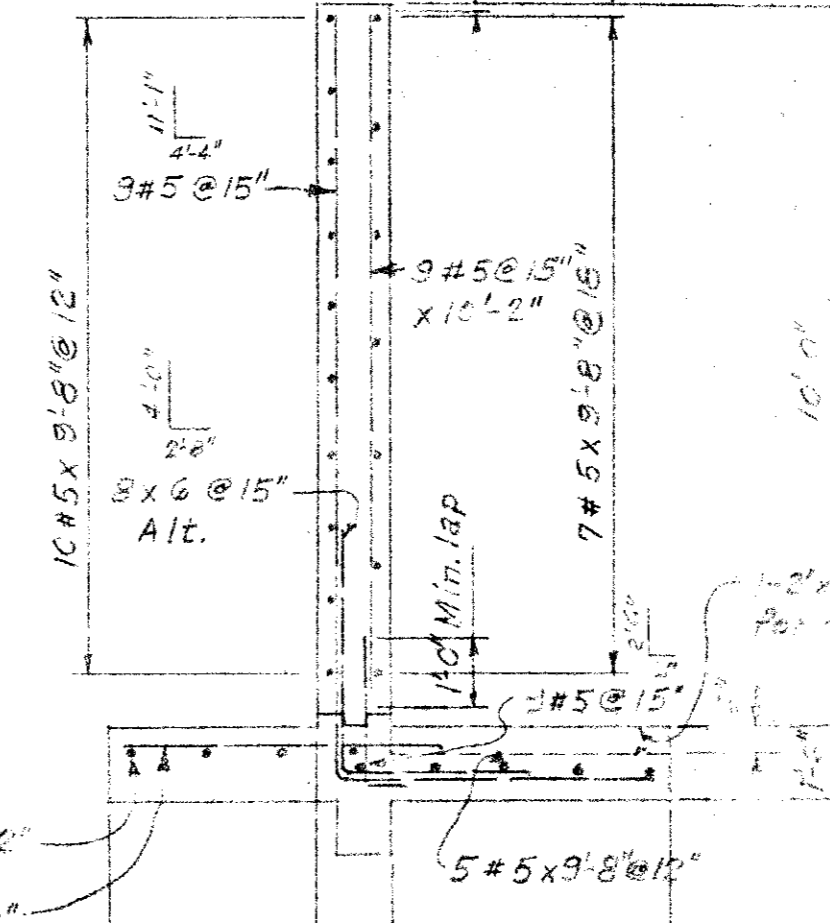
SECTION C-C



SECTION D-D

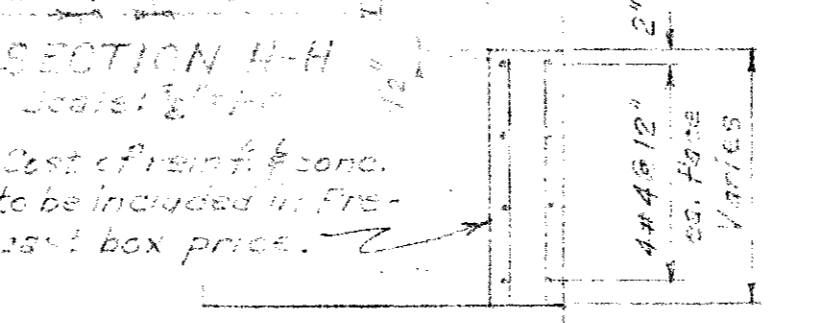


SECTION E-E

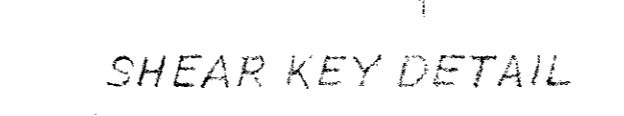


SECTION G-G

Scale: 3/8" = 1'-0"



8x8 BOX CULVERT PARAPET DETAIL A



SHEAR KEY DETAIL

CITY OF ADDISON			
COUNTY OF DALLAS, TEXAS			
DEPARTMENT OF PUBLIC WORKS			
BOX CULVERT & RETAINING WALL DETAILS			
BELT LINE ROAD			
MARSH LN. TO NORTH DALLAS PKWY.			
GINN, INC., CONSULTING ENGINEERS			
DESIGNED - A.C.F.	DRAWN - A.C.F.	DATE - JUNE 1980	FILE
APPROVED - HWG	CHECKED - S.M.	SCALE - AS SHOWN	SHEET 23 A OF