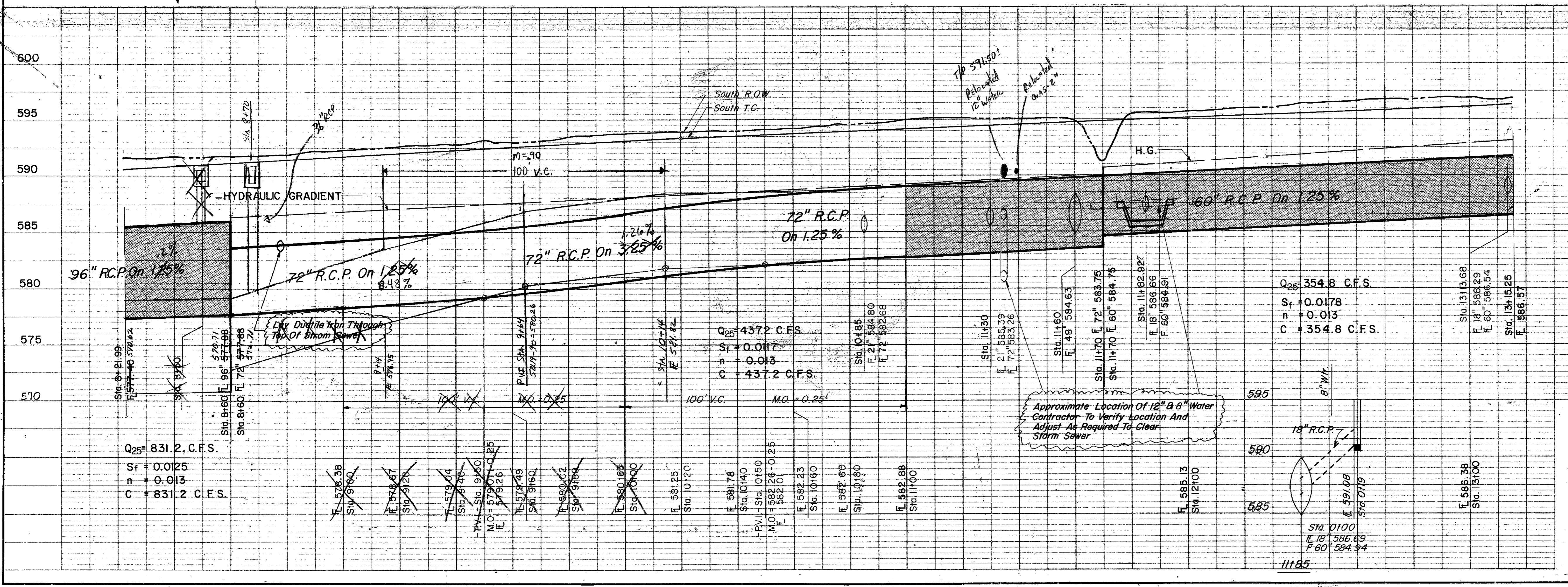
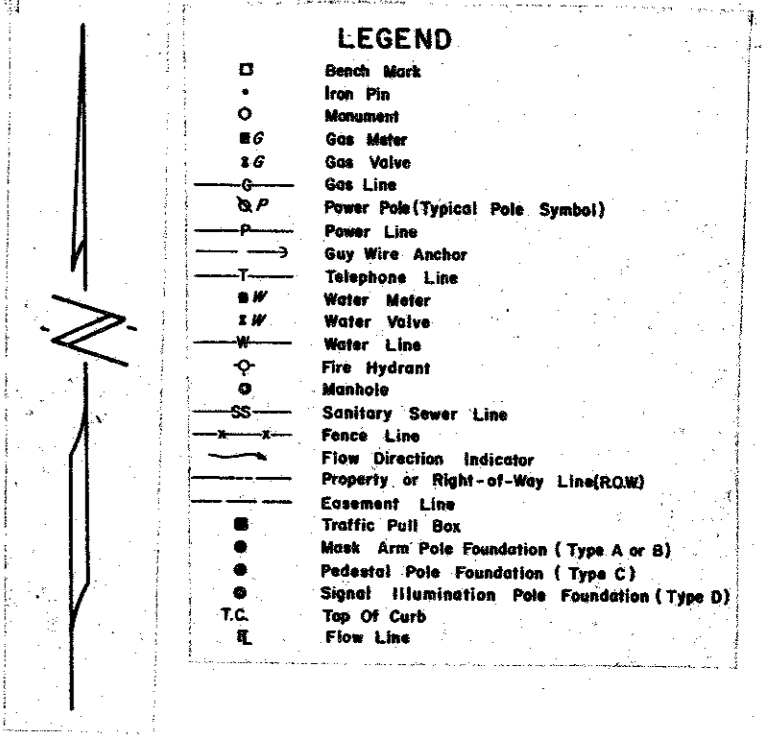


| ESTIMATED QUANTITIES | | | |
|----------------------|-----------------------------|------|----------|
| ITEM | DESCRIPTION | UNIT | QUANTITY |
| 472 | Rip Pav (Conc) | SY | 25.0 |
| 473.1 | 18" RCP CI III | LF | 20.0 |
| 473.2 | 21" RCP CI III | LF | 29.0 |
| 485.7 | 48" RCP CI III | LF | 42.0 |
| 489.0 | 60" RCP CI III | LF | 145.0 |
| 489.1 | 66" RCP CI III | LF | 24.0 |
| 489.2 | 72" RCP CI III | LF | 310.0 |
| 489.3 | 96" RCP CI III | LF | 23.0 |
| 479.4 | 10" Rec. Inlet-comp. in pl. | EA | 1.0 |
| 479.5 | Adjust 8" Water Main | LF | 27.0 |
| 479.6 | 8" Baffle Iron Through | EA | 15.0 |
| 479.7 | Storm Sewer | EA | 15.0 |
| 470.7 | Mod. 5" Type V Inlet | Ea. | 1.0 |



CITY OF ADDISON
COUNTY OF DALLAS, TEXAS
 DEPARTMENT OF PUBLIC WORKS
DRAINAGE STA. 25+00-30+00
BELT LINE ROAD
 MARSH LN. TO NORTH DALLAS PKWY.
 GINN, INC. CONSULTING ENGINEERS

DESIGNED - J.C.H. DRAWN - S.M. DATE - MAY 1980 FILE
 APPROVED - H.W.G. CHECKED - B.H. SCALE - H=1"=20' V=1"=5' SHEET 35 OF