

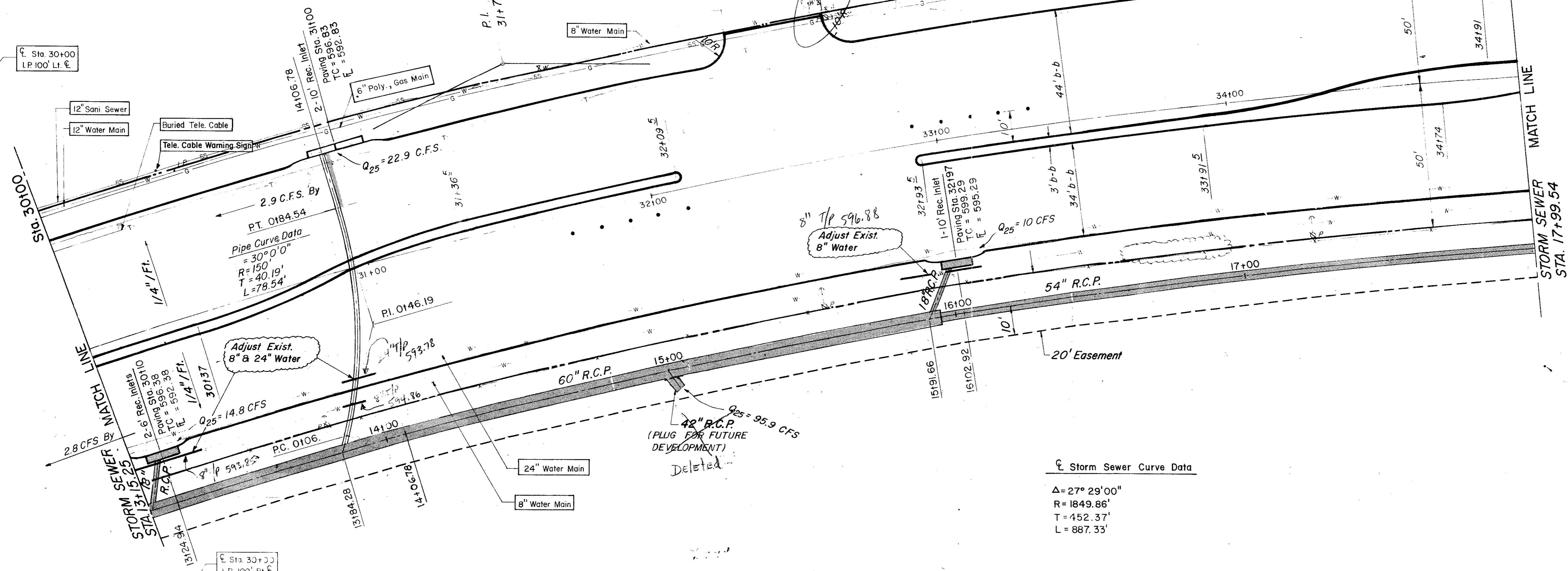
Curve Data
 $\Delta = 27^\circ 29' 00''$
 $R = 1909.86'$
 $T = 467.05'$
 $L = 916.11'$

Sta 35+00
 I.P. 100' Lt. E.

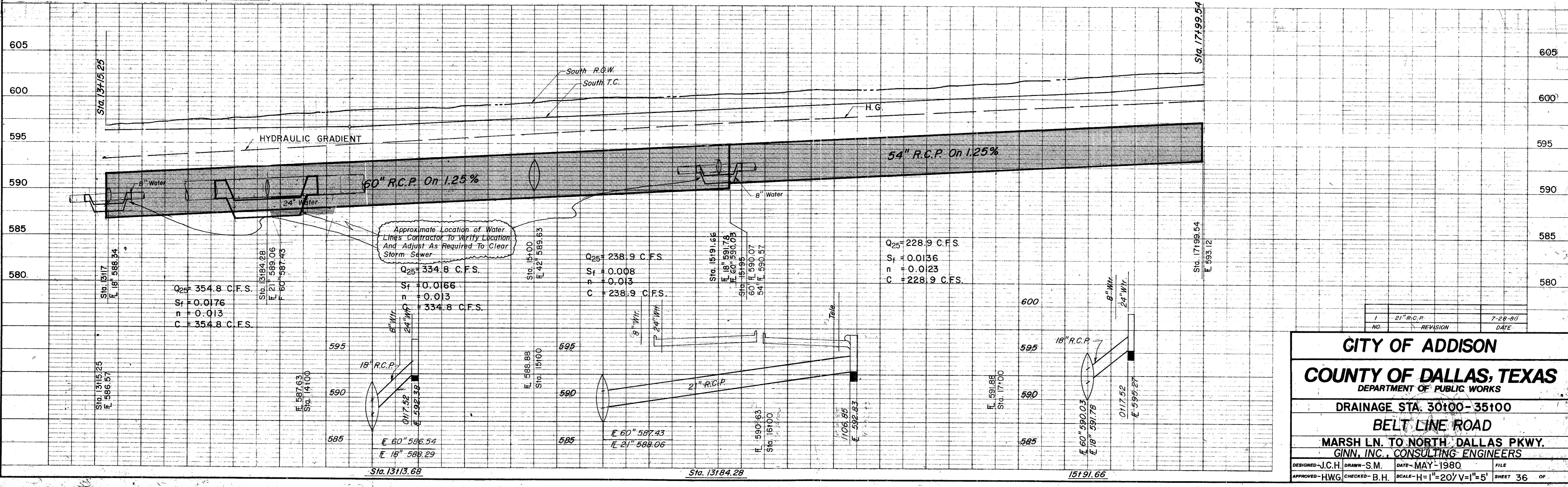
ITEM	DESCRIPTION	UNIT	QUANTITY
463.1	18" R.C.P. CI III	LF	50.0
463.2	21" R.C.P. CI III	LF	115.0
463.3	42" R.C.P. CI III	LF	10.0
463.4	54" R.C.P. CI III	LF	278.0
463.5	60" R.C.P. CI III	LF	7.0
470.1	10" Rec. Inlet - compl. sp. p.	EA	2
470.2	Adjust 24" Water Main	LF	40.0
470.3	Adjust 8" Water Main	LF	60.0

LEGEND

- Bench Mark
- Iron Pin
- ⊙ Monument
- ⊙ Gas Meter
- ⊙ Gas Valve
- ⊙ Gas Line
- ⊙ Power Pole (Typical Pole Symbol)
- ⊙ Power Line
- ⊙ Guy Wire Anchor
- ⊙ Telephone Line
- ⊙ Water Main
- ⊙ Water Valve
- ⊙ Water Line
- ⊙ Fire Hydrant
- ⊙ Manhole
- ⊙ Sanitary Sewer Line
- ⊙ Fence Line
- ⊙ Flow Direction Indicator
- ⊙ Property or Right-of-Way Line (R.O.W.)
- ⊙ Easement Line
- ⊙ Traffic Pull Box
- ⊙ Mast Arm Pole Foundation (Type A or B)
- ⊙ Pedestal Pole Foundation (Type C)
- ⊙ Signal Illumination Pole Foundation (Type D)
- ⊙ Top of Curb
- ⊙ Flow Line



Storm Sewer Curve Data
 $\Delta = 27^\circ 29' 00''$
 $R = 1849.86'$
 $T = 452.37'$
 $L = 887.33'$



CITY OF ADDISON
 COUNTY OF DALLAS, TEXAS
 DEPARTMENT OF PUBLIC WORKS
 DRAINAGE STA. 30100-35100
 BELT LINE ROAD
 MARSH LN. TO NORTH DALLAS PKWY.
 GINN, INC., CONSULTING ENGINEERS

DESIGNED - J.C.H. DRAWN - S.M. DATE - MAY - 1980 FILE
 APPROVED - H.W.G. CHECKED - B.H. SCALE - H=1"=20' V=1"=5' SHEET 36 OF