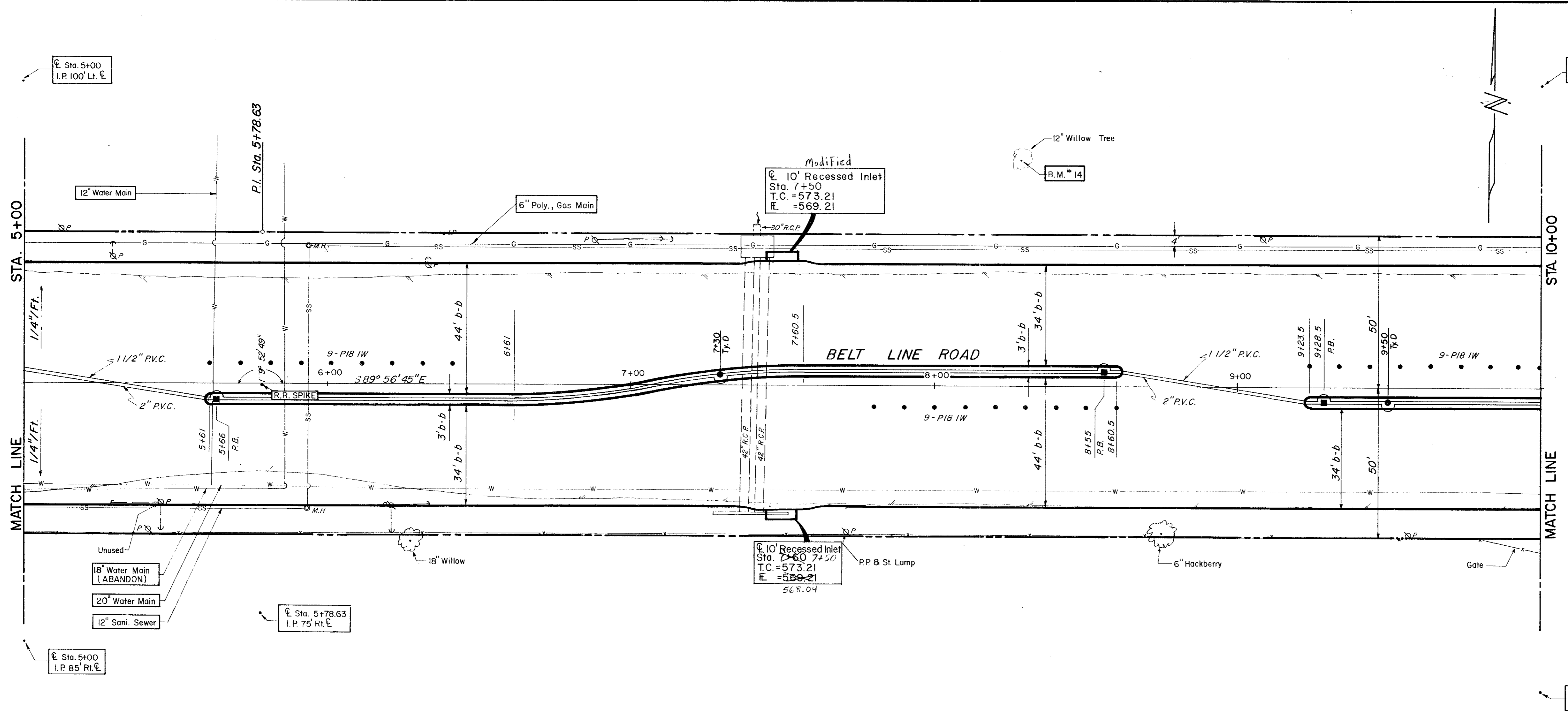
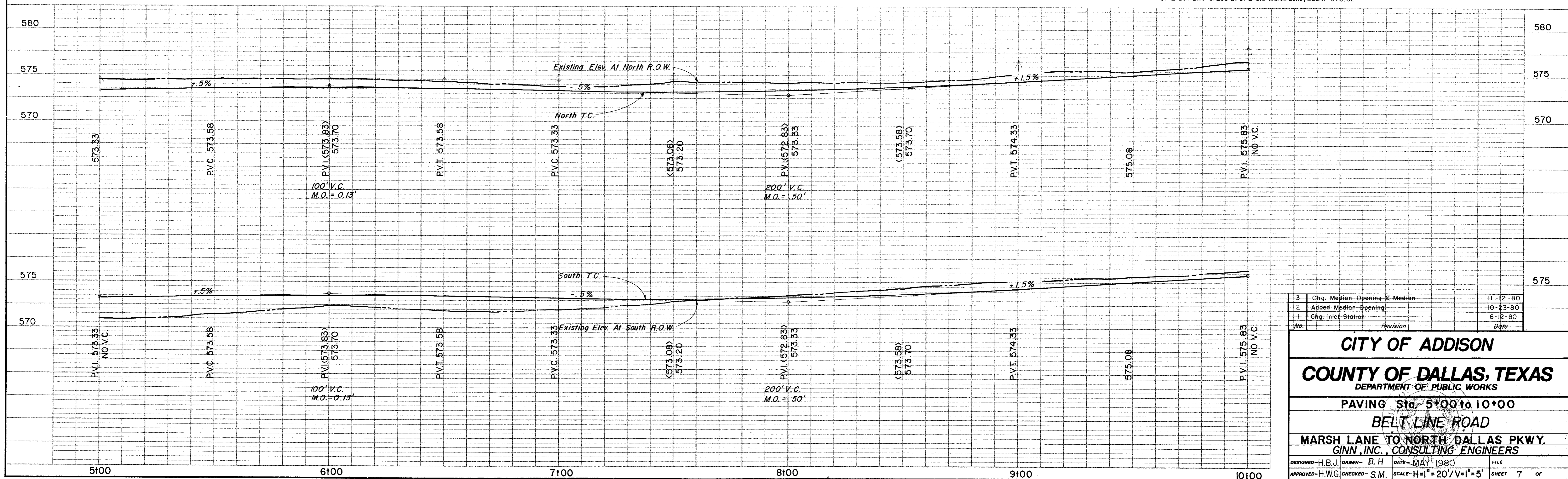


ESTIMATED QUANTITIES		
ITEM	DESCRIPTION	UNIT QUANTITY
100	Prepare Roadway R.O.W	Sta. 5
104.1	Remove Old Concrete, Pavement & Median	SY
104.2	Sawed Break-Out Groove	LF
110	Unclassified Road Excavation(Dens Cont.)	CY 3937
160	Placing 4" Topsoil	CY 79.44
248	6" Flex Base (Dens Cont)(Ty A, Gr 2,C13)	CY
260.1	Lime (Ty A) Slurry Method	Ton 50.00
260.2	6" Lime Treated Subgrade (Dens Cont)	SY 4000
340.1	3" Hot Mix Asp (Ty D) Resurf Shoulder	Ton 91.68
340.2	6" Hot Mix Asphalt (Ty B)	Ton
360.1	8" Conc Pavement (3000 PSI)	SY 4374.70
360.2	6" Conc Monolithic Curb(3000 PSI)	LF 1704
360.3	4" Non-Reinf Conc In Median(2000PSI)	SY 125.33
479.2	Adjust Manhole	EA 1
522	Conc Curb & Gutter Class A	LF
524	Conc Driveways, Appr 5" Reinf Conc(3000PSI)	SY
630.1	Foundation (Ty A) Traffic Sig In Place	EA
630.2	Foundation (Ty B) Traffic Sig In Place	EA
630.3	Foundation (Ty C) Traffic Sig In Place	EA
630.4	Foundation (Ty D) Illumination	EA 2
640.1	1/2" PVC Conduit, Furnish & Install	LF 504
640.2	2" PVC Conduit, Furnish & Install	LF 504
640.3	3" PVC Conduit, Furnish & Install	LF
640.4	Pull Box, Complete In Place	EA 3
752.1	Traffic Buttons - Single Refl Ty P15 White	EA 48
752.2	Traffic Buttons - Single Refl Ty P18-1 White	EA 27
754.1	Traffic Buttons - Nonrefl, Ty P7 White	EA 240

LEGEND	
□	Survey Mark
○	Iron Pin
○	Manometer
○	Gas Meter
○	Gas Valve
○	Gas Line
○	Power Pole(Typical Pole Symbol)
○	Power Line
○	Ray Wire Anchor
○	Telephone Line
○	Water Meter
○	Water Valve
○	Water Line
○	Fire Hydrant
○	Manhole
○	Sanitary Sewer Line
○	Face Line
○	Flow Direction Indicator
○	Property or Right-of-Way Line(ROW)
○	Exemptions Line
○	Traffic Sign Pole
○	Mon. Arm Pole Foundation (Type A or B)
○	Post-and-Rail Pole Foundation (Type C)
○	Signal Illumination Pole Foundation (Type D)
○	Top of Curb
○	Face Line



B.M. # 14 R.R. Spike In 12" Willow Tree At 75' ± N. Of E. Belt Line & 250' E. Of E. Old Marsh Lane, ELEV. = 576.32



No.	Revision	Date
3	Chg. Median Opening & Median	11-12-80
2	Added Median Opening	10-23-80
1	Chg. Inlet Station	6-12-80

CITY OF ADDISON
COUNTY OF DALLAS, TEXAS
 DEPARTMENT OF PUBLIC WORKS
 PAVING Sta. 5+00 to 10+00
BELT LINE ROAD
 MARSH LANE TO NORTH DALLAS PKWY.
 GINN, INC., CONSULTING ENGINEERS

DESIGNED-H.B.J. DRAWN-B.H. DATE-MAY-1980 FILE
 APPROVED-H.W.G. CHECKED-S.M. SCALE-H=1"=20'/V=1"=5' SHEET 7 OF