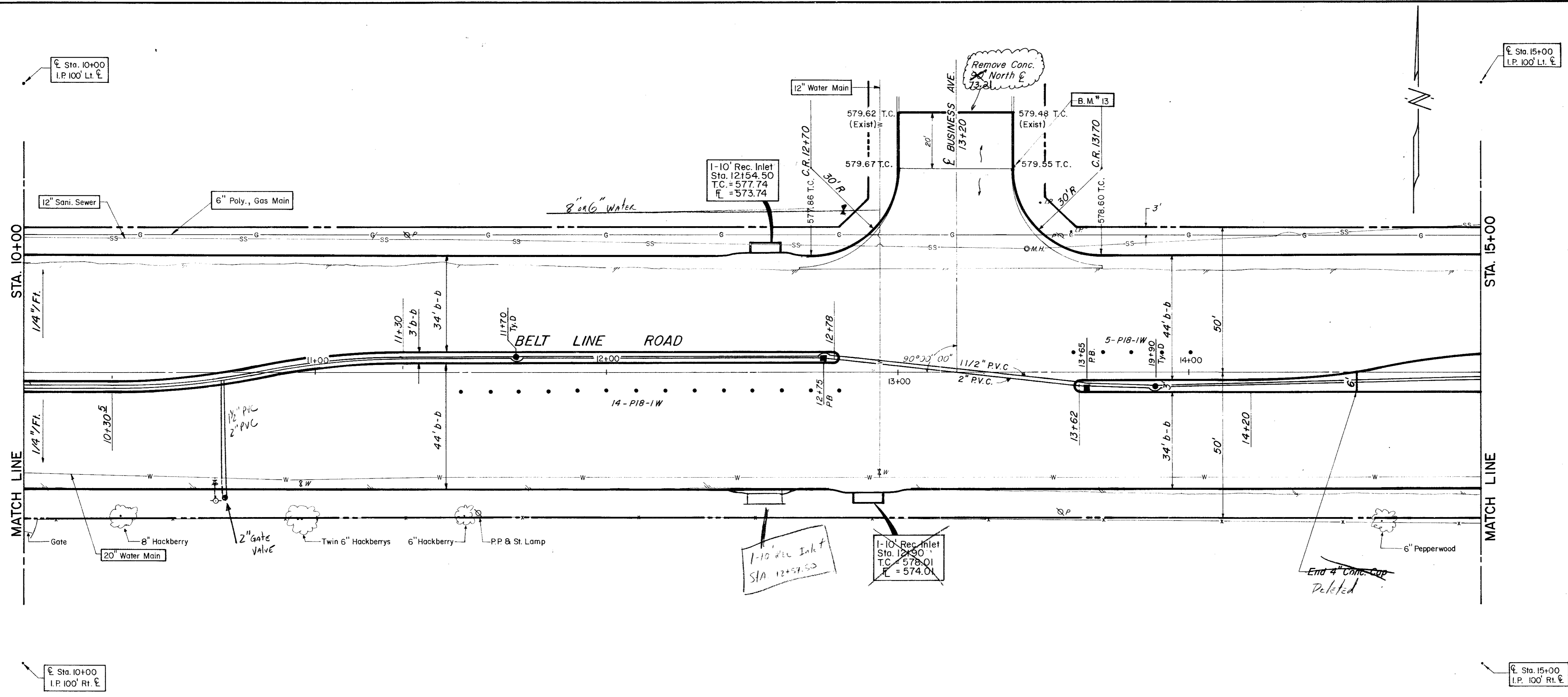


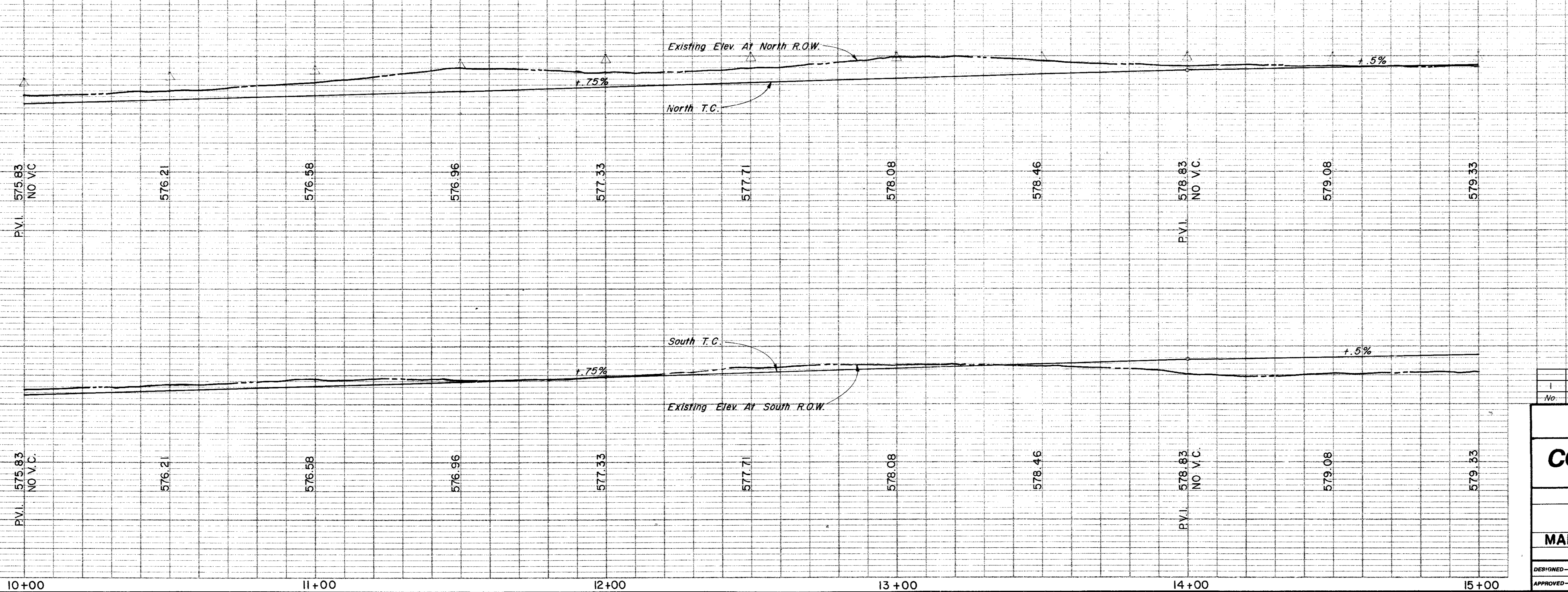
ESTIMATED QUANTITIES			
ITEM	DESCRIPTION	UNIT	QUANTITY
100	Prepare Roadway R.O.W	Sta.	5
104.1	Remove Old Concrete, Pavement & Median	SY	287
104.2	Sawed Break-Out Groove	LF	40
110	Unclassified Road Excavation (Dens Cont.)	CY	4655
160	Placing 4" Topsoil	CY	17.43
248	6" Flex Base (Dens Cont.) (Ty A, Gr 2, C13)	CY	
260.1	Lime (Ty A) Slurry Method	Ton	46.59
260.2	6" Lime Treated Subgrade (Dens Cont.)	SY	3817
340.1	3" Hot Mix Asph (Ty D) Resurf Shoulder	Ton	77.01
340.2	6" Hot Mix Asphalt (Ty B)	Ton	329.15
360.1	6" Conc Pavement (3000 PSI)	SY	4595
360.2	6" Conc Monolithic Curb (3000 PSI)	LF	1874
360.3	4" Non-Reinf Conc in Median (2000 PSI)	SY	130
479.1	Adjust Water Valves	EA	2
479.2	Adjust Manhole	EA	1
640.5	2" P.V.C. S CH 40 (Conc. Encasement)	LF	45
522	Conc Curb & Gutter Class A	LF	
524	Conc Driveways, Appr 5" Reinf Conc (3000 PSI)	SY	
630.1	Foundation (Ty A) Traffic Sig In Place	EA	
630.2	Foundation (Ty B) Traffic Sig In Place	EA	
630.3	Foundation (Ty C) Traffic Sig In Place	EA	
630.4	Foundation (Ty D) Illumination	EA	2
640.1	1 1/2" PVC Conduit, Furnish & Install	LF	505
640.2	2" PVC Conduit, Furnish & Install	LF	505
640.3	3" PVC Conduit, Furnish & Install	LF	
640.4	Pull Box, Complete in Place	EA	2
752.1	Traffic Buttons-Single Refl Ty P18-1 White	EA	48
752.2	Traffic Buttons-Single Refl Ty P18-1 White	EA	19
754.1	Traffic Buttons-Nonrefl, Ty P7 White	EA	232

LEGEND

- Bench Mark
- Iron Pin
- Monument
- MC Gas Meter
- WV Gas Valve
- Gas Line
- Power Line (Typical Pole Symbol)
- Telephone Line
- Guy Wire Anchor
- Water Meter
- Water Valve
- Water Line
- Fire Hydrant
- Manhole
- Sanitary Sewer Line
- Fence Line
- Flow Direction Indicator
- Property or Right-of-Way Line (ROW)
- Easement Line
- Traffic Pole Size
- Mast Arm Pole Foundation (Type A or B)
- Pedestal Pole Foundation (Type C)
- Signal Illumination Pole Foundation (Type D)
- T.C. Top Of Curb
- EL Flow Line



B.M. 13 "a" Top Of Curb At Curb Return East Side Of Business Ave. & North Of Belt Line, ELEV = 579.86



1	Chg. Median Opening	11-12-80	575
No.	Revision	Date	

CITY OF ADDISON
COUNTY OF DALLAS, TEXAS
 DEPARTMENT OF PUBLIC WORKS
 PAVING Sta. 10+00 to 15+00
BELT LINE ROAD
 MARSH LANE TO NORTH DALLAS PKWY.
 GINN, INC., CONSULTING ENGINEERS

DESIGNED-H.B.J. DRAWN-B.H. DATE-MAY-1980 FILE
 APPROVED-H.W.G. CHECKED-S.M. SCALE-H=1"=20'/V=1"=5' SHEET 8 OF