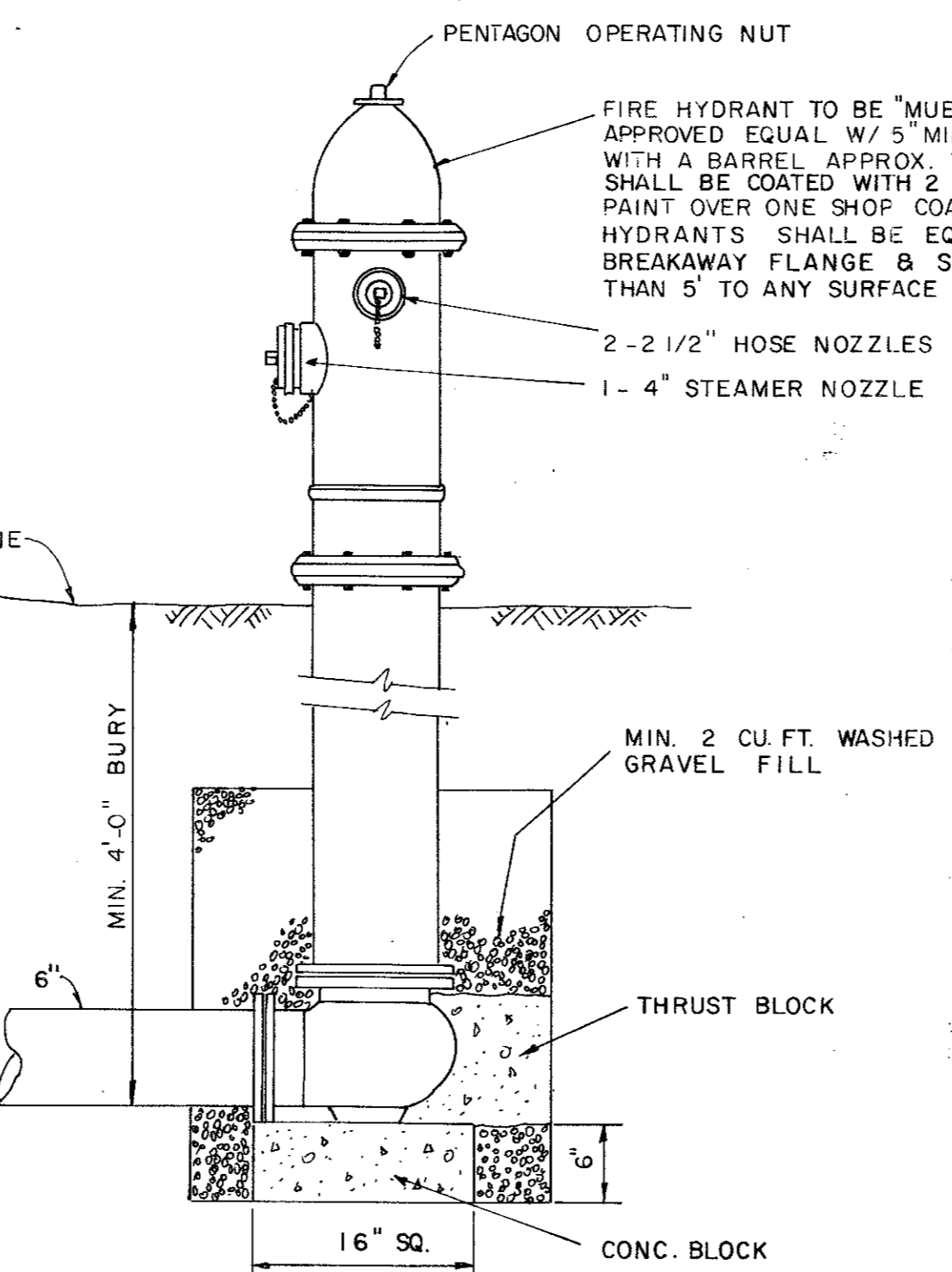
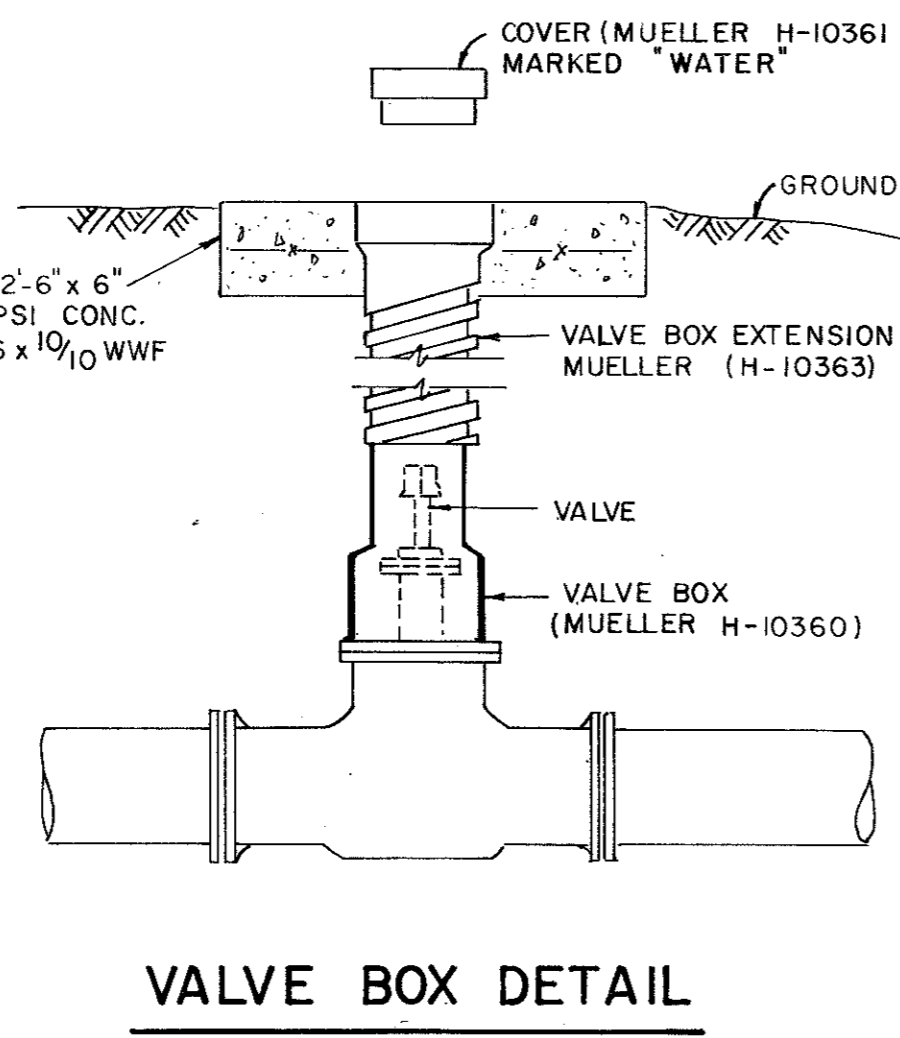
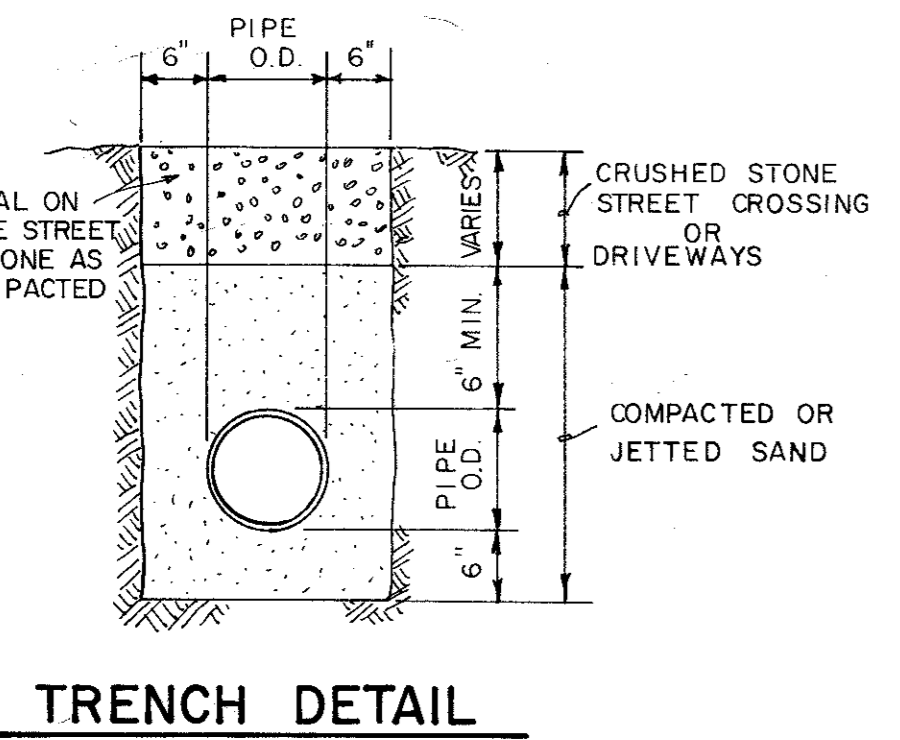
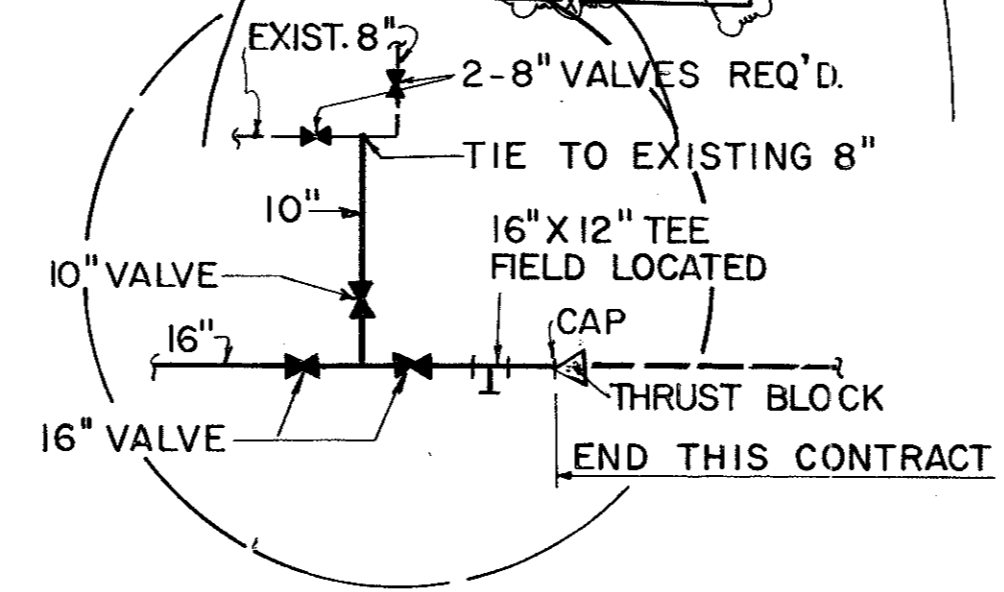
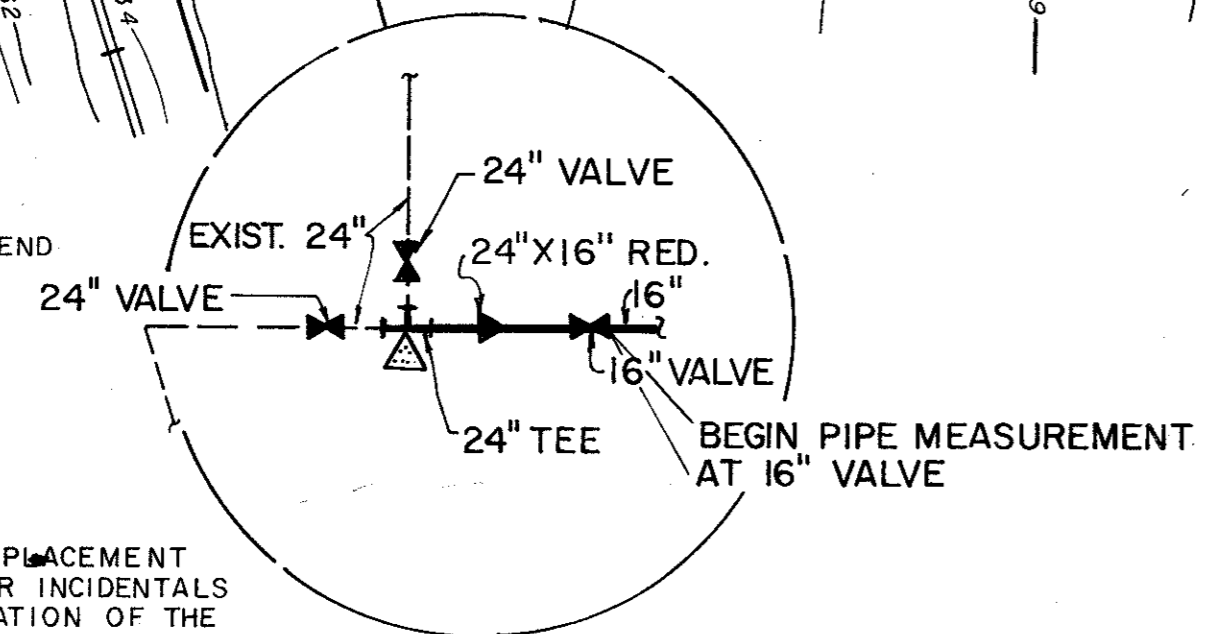


GENERAL NOTE:  
 REMOVE THRUST BLOCKS & EXISTING 90° BEND  
 INSTALL 24 x 24 x 24 TEE  
 INSTALL 1- 24 x 16 REDUCER  
 INSTALL 2- 24" BUTTERFLY VALVES  
 INSTALL 1- 16" " "  
 INSTALL NEW THRUST BLOCK BEHIND TEE  
 REPAVE TO ORIGINAL CONDITION

SPECIAL PAY ITEM NO. 4A  
 NO SEPARATE PAYMENT FOR ANY 24" REPLACEMENT PIPE, CLOSURES, REDUCERS, OR ANY OTHER INCIDENTALS NECESSARY FOR THE COMPLETE INSTALLATION OF THE TIE IN. (VALVES PAID FOR SEPARATELY). MEASUREMENT FOR 16" PIPE WILL BEGIN AT 16" VALVE LOCATION.



ESTIMATED QUANTITIES			
ITEM	DESCRIPTION	UNIT	QUANTITY
1A	16" DIAM. WATER LINE	L.F.	1280
9A	FIRE HYDRANTS	EA.	5
2A	24" VALVES	EA.	2
3A	16" "	EA.	4
6A	10" "	EA.	1
7A	8" "	EA.	2
8A	TIE-IN (8")	EA.	1
4A	SPECIAL TIE-IN (24")	EA.	1
5A	BORE AND CASE 10"	L.F.	100

CITY OF ADDISON  
 DALLAS COUNTY, TEXAS  
 WATER IMPROVEMENTS

PHASE II  
 BELTLINE ROAD  
 LINE B

GINN, INC.  
 ENGINEERS  
 DALLAS, TEXAS

Design: [ ] Scale: As Shown Sheet 2 of 6  
 Drawn: [ ] Date: 1979