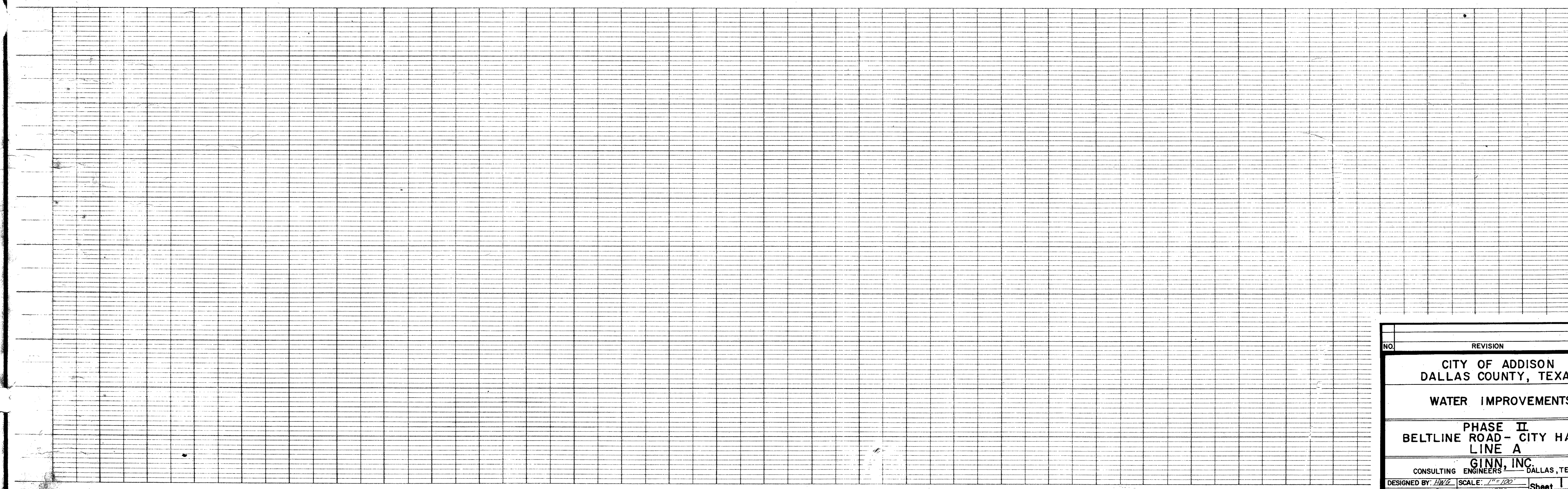
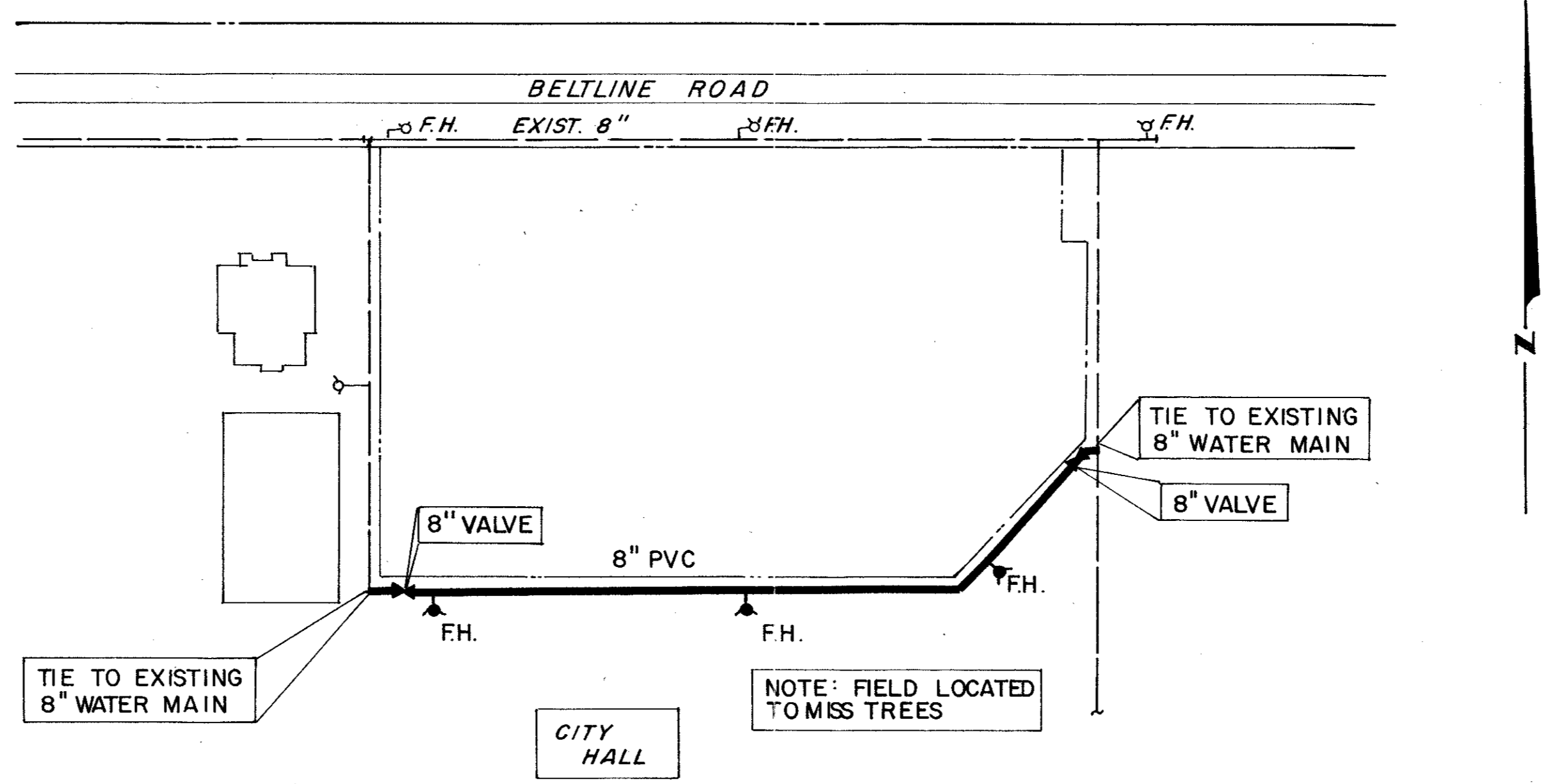
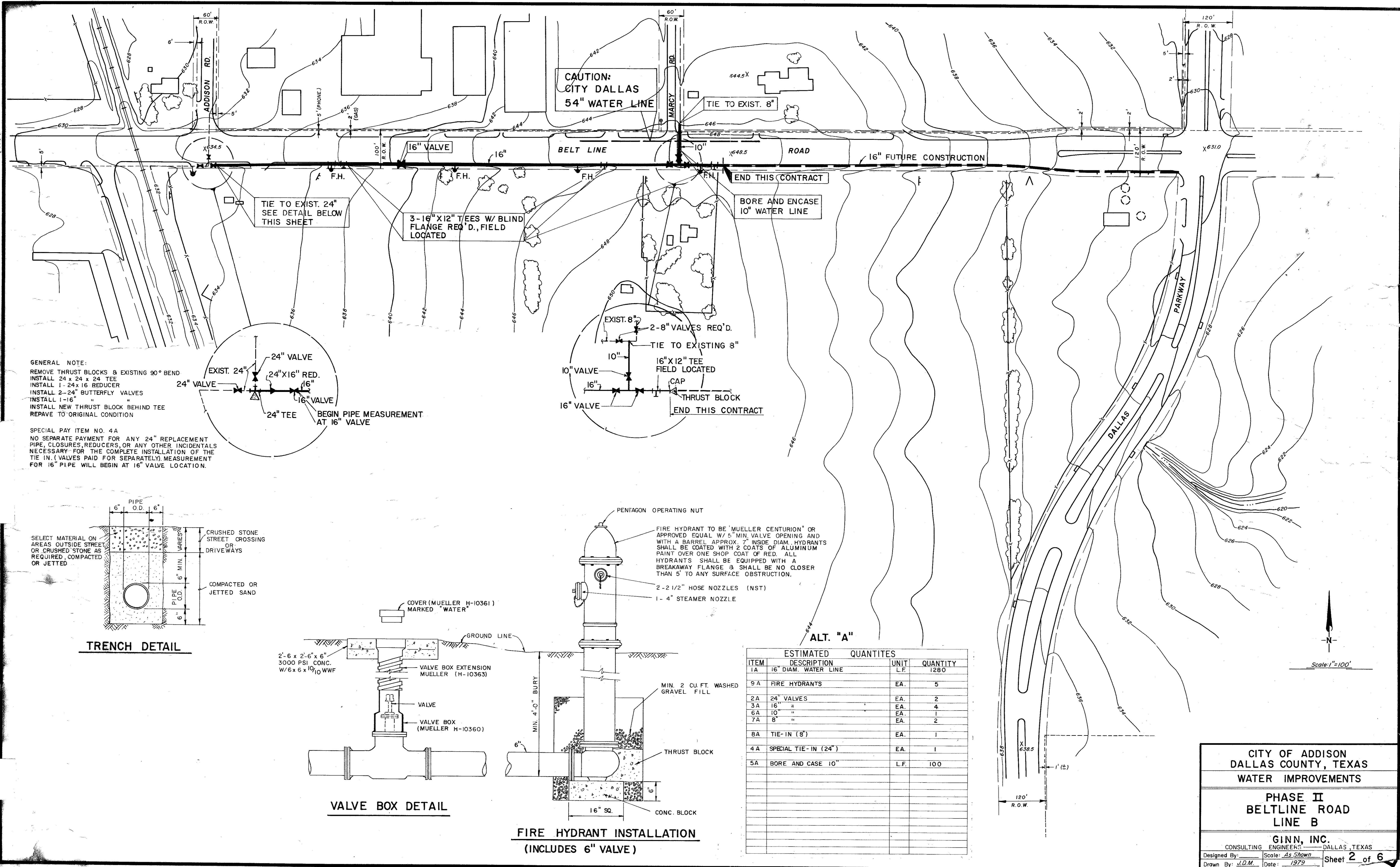


ITEM	DESCRIPTION	ESTIMATED QUANTITIES	
		UNIT	QUANTITY
3	8" WATER MAIN (PVC)	L.F.	660
5	8" VALVES	EA	2
6	FIRE HYDRANTS	EA.	3
11	2" SERVICE LINE	L.F.	100
7	TIE-IN TO EXIST. WATER MAIN	EA.	2

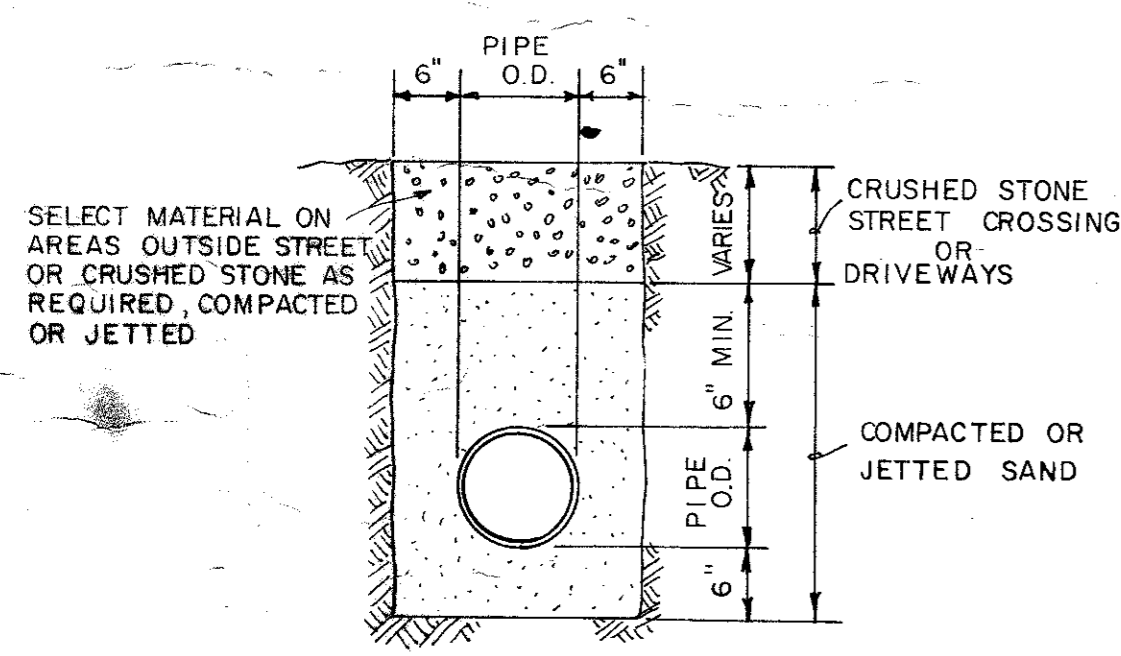
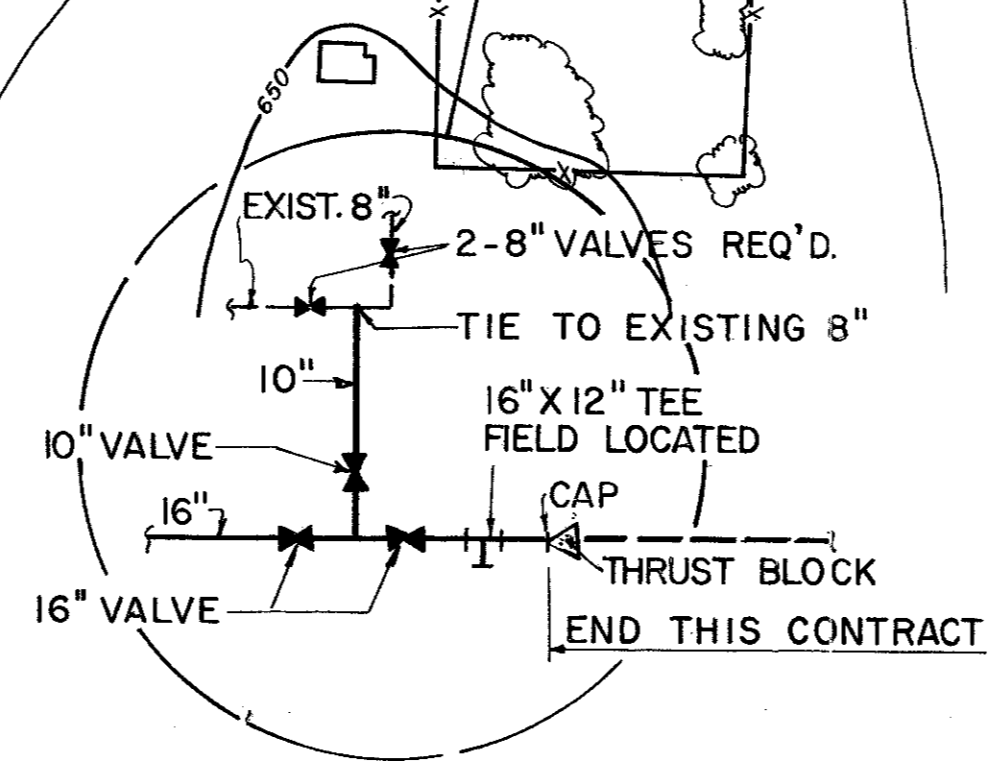
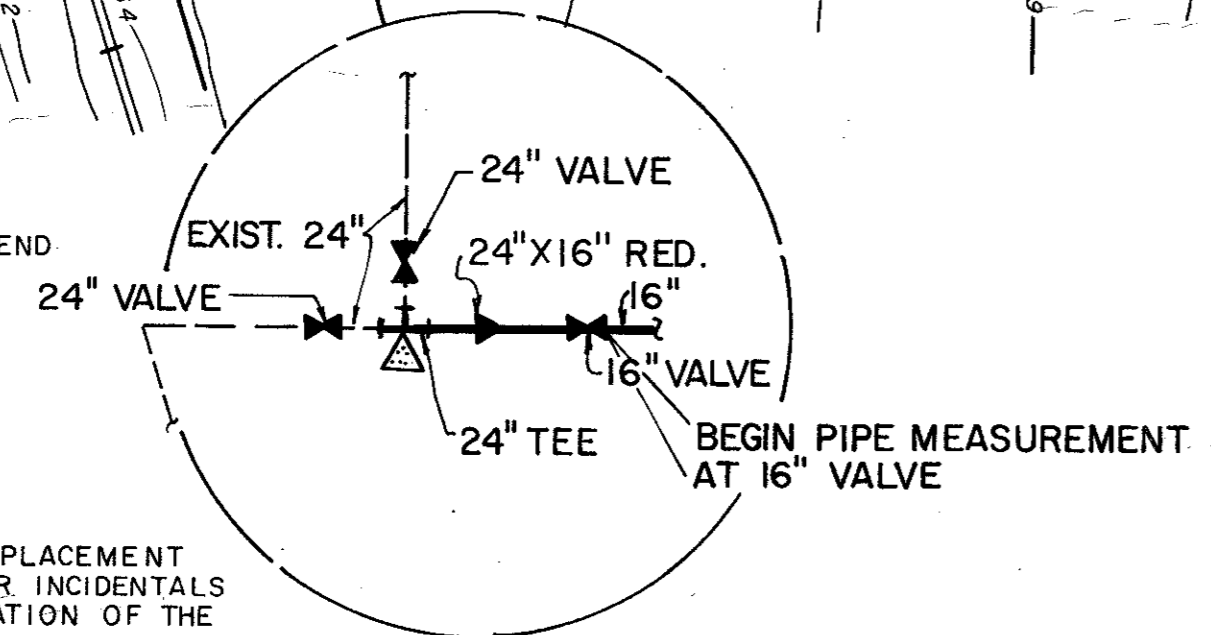


NO.	REVISION	BY	DATE
CITY OF ADDISON DALLAS COUNTY, TEXAS			
WATER IMPROVEMENTS			
PHASE II BELTLINE ROAD - CITY HALL LINE A			
GINN, INC. CONSULTING ENGINEERS - DALLAS, TEXAS			
DESIGNED BY: HWG	SCALE: 1" = 100'	Sheet 1 of 6	
DRAWN BY: CP	DATE: 1979		

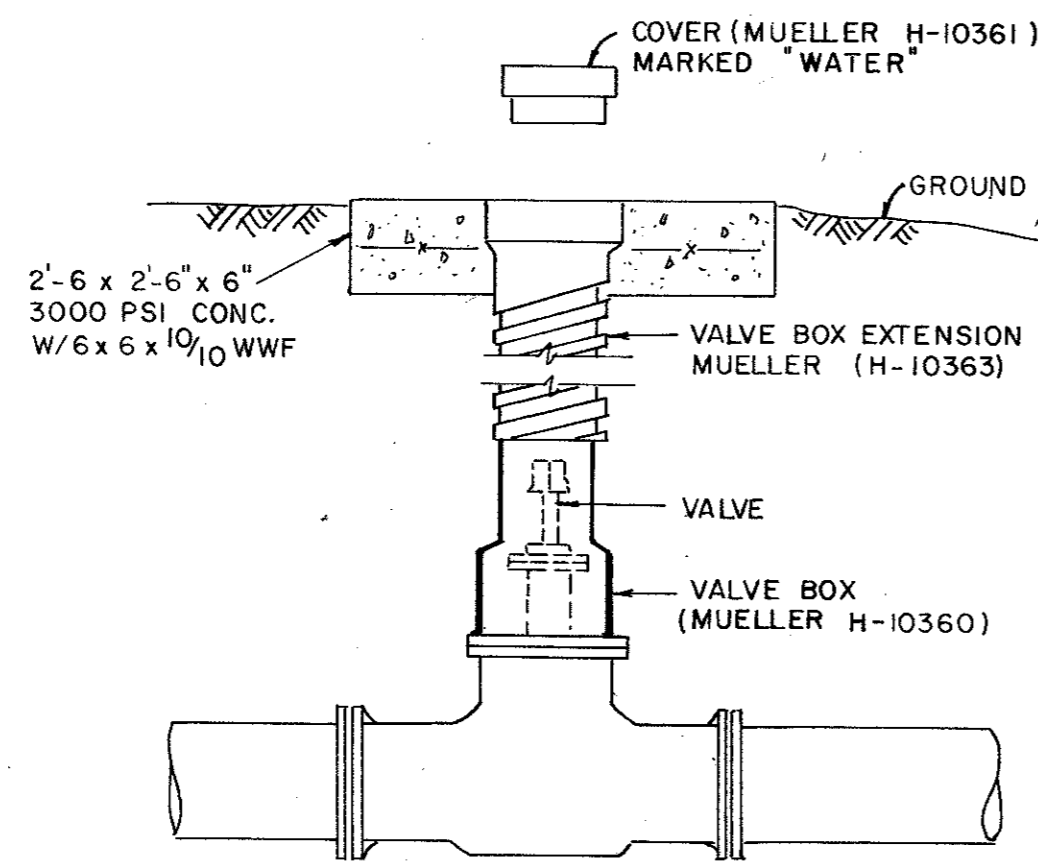


**GENERAL NOTE:**  
 REMOVE THRUST BLOCKS & EXISTING 90° BEND  
 INSTALL 24" x 24" x 24" TEE  
 INSTALL 1-24" x 16" REDUCER  
 INSTALL 2-24" BUTTERFLY VALVES  
 INSTALL 1-16" "

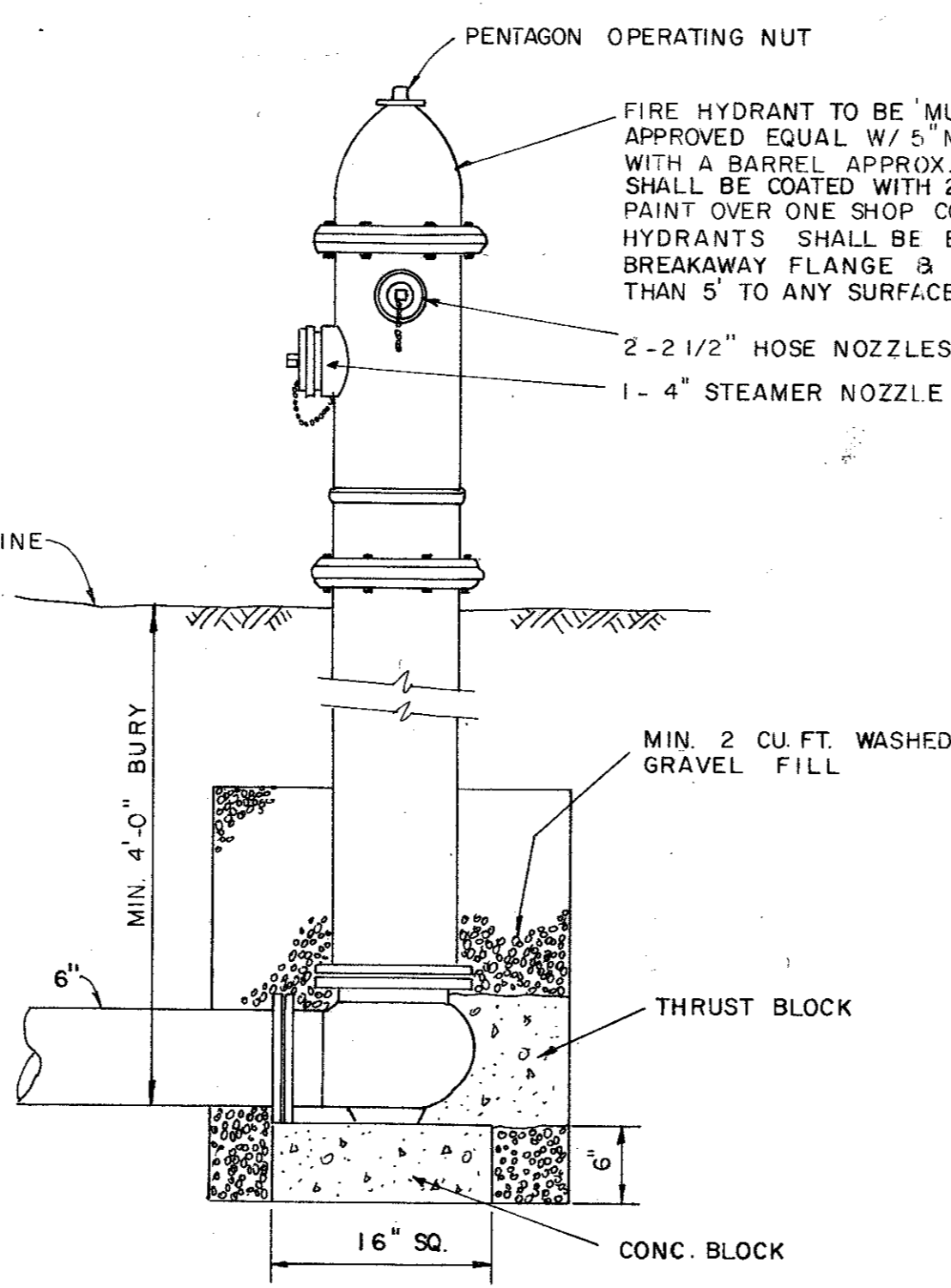
**SPECIAL PAY ITEM NO. 4A**  
 NO SEPARATE PAYMENT FOR ANY 24" REPLACEMENT PIPE, CLOSURES, REDUCERS, OR ANY OTHER INCIDENTALS NECESSARY FOR THE COMPLETE INSTALLATION OF THE TIE IN. (VALVES PAID FOR SEPARATELY). MEASUREMENT FOR 16" PIPE WILL BEGIN AT 16" VALVE LOCATION.



**TRENCH DETAIL**



**VALVE BOX DETAIL**



**FIRE HYDRANT INSTALLATION (INCLUDES 6" VALVE)**

ESTIMATED QUANTITIES			
ITEM	DESCRIPTION	UNIT	QUANTITY
1A	16" DIAM. WATER LINE	L.F.	1280
9A	FIRE HYDRANTS	EA.	5
2A	24" VALVES	EA.	2
3A	16" "	EA.	4
6A	10" "	EA.	1
7A	8" "	EA.	2
8A	TIE-IN (8')	EA.	1
4A	SPECIAL TIE-IN (24')	EA.	1
5A	BORE AND CASE 10"	L.F.	100

CITY OF ADDISON  
 DALLAS COUNTY, TEXAS  
 WATER IMPROVEMENTS

**PHASE II**  
 BELTLINE ROAD  
 LINE B

GINN, INC.  
 CONSULTING ENGINEERS DALLAS, TEXAS

Designed By: \_\_\_\_\_ Scale: As Shown  
 Drawn By: J.D.M. Date: 1979

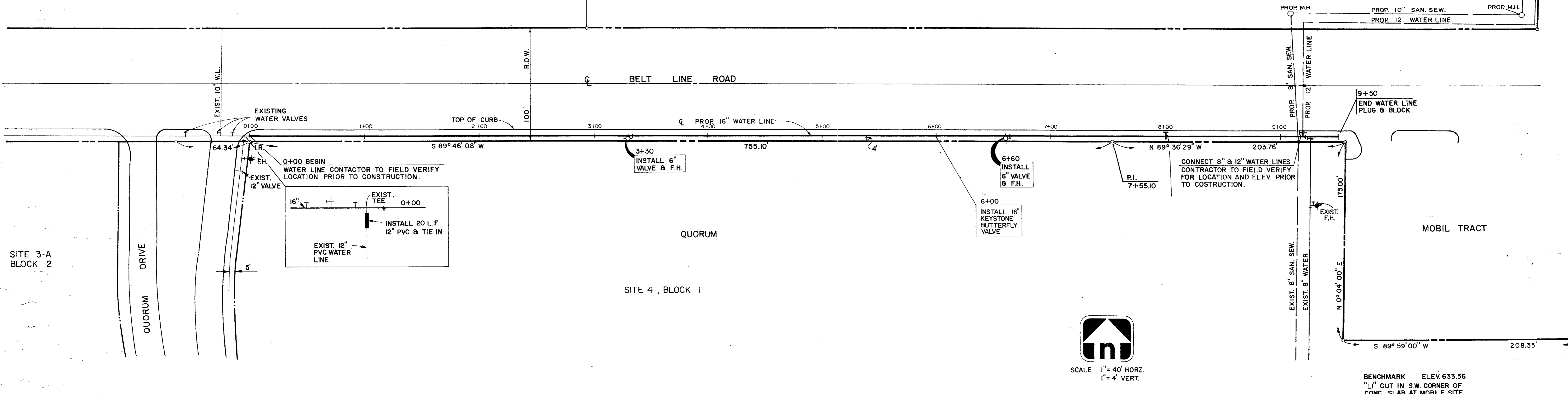
Sheet 2 of 6

AL GONZALES TRACT

QUORUM NORTH

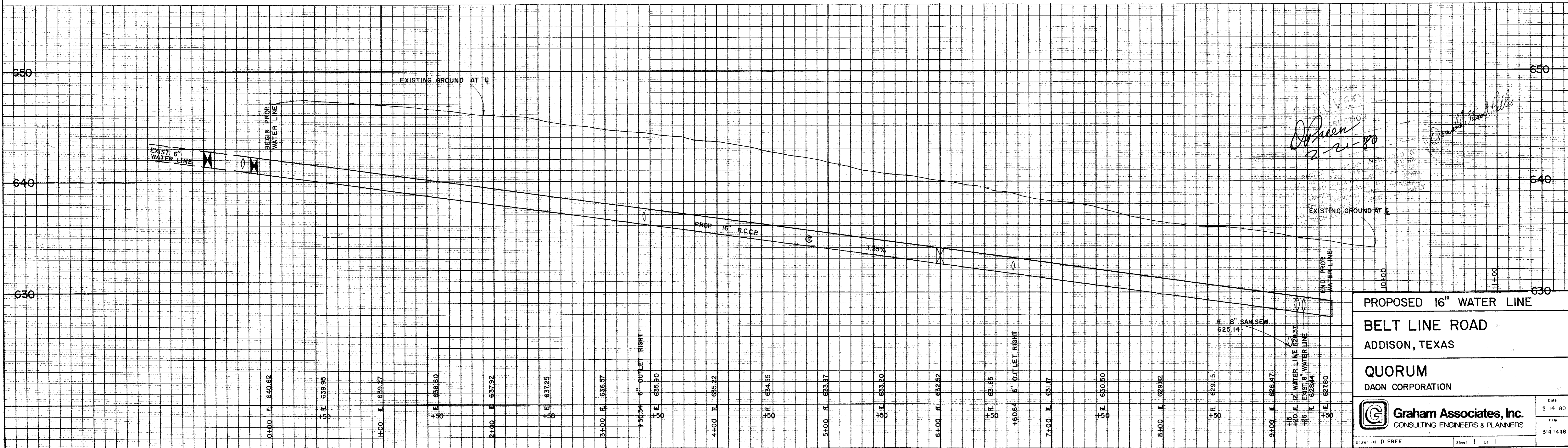
GENERAL NOTES:

- 1) Fire Hydrants shall be Mueller "Centurion Hydrants".
- 2) Gate Valves shall be Mueller Brand.
- 3) 24 hours prior to construction a pre-construction meeting must be held for proper coordination with city officials.



SCALE 1" = 40' HORZ.  
1" = 4' VERT.

BENCHMARK ELEV 633.56  
"□" CUT IN S.W. CORNER OF CONC. SLAB AT MOBILE SITE.



PROPOSED 16" WATER LINE  
BELT LINE ROAD  
ADDISON, TEXAS

QUORUM  
DAON CORPORATION

**Graham Associates, Inc.**  
CONSULTING ENGINEERS & PLANNERS

Drawn By D. FREE Sheet 1 of 1

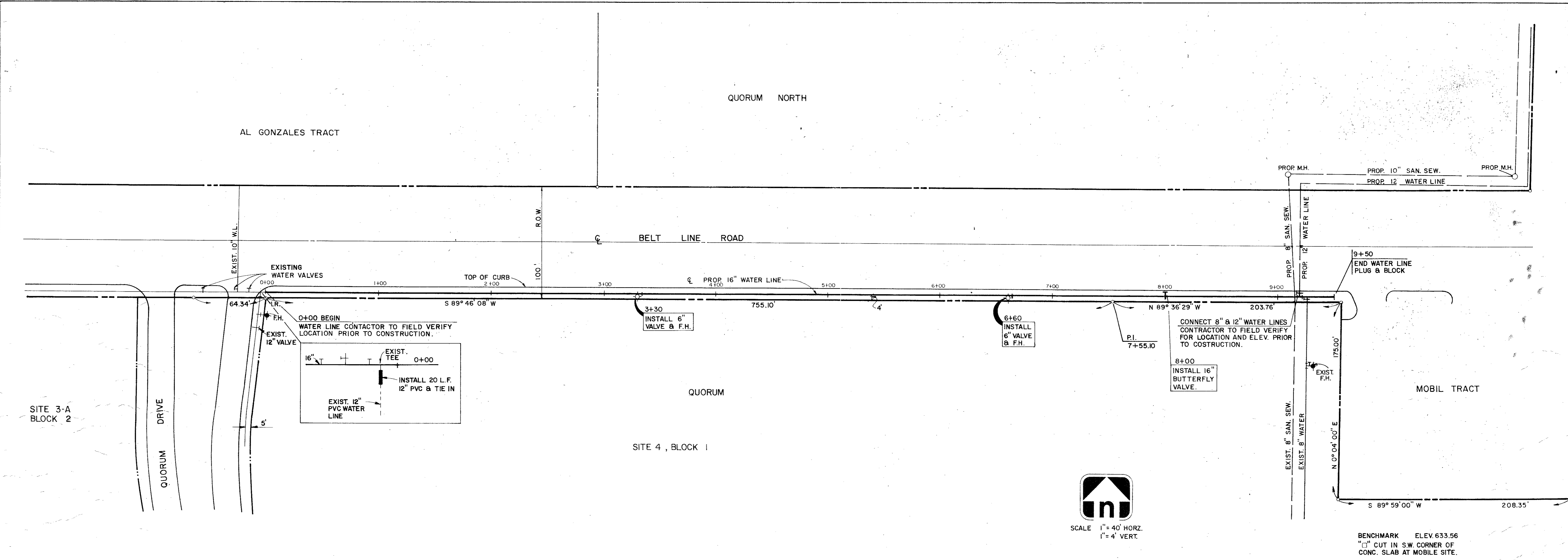
Date 2 14 80  
File 3141448

*Shreen*  
2-21-80

*Donald Stearns*

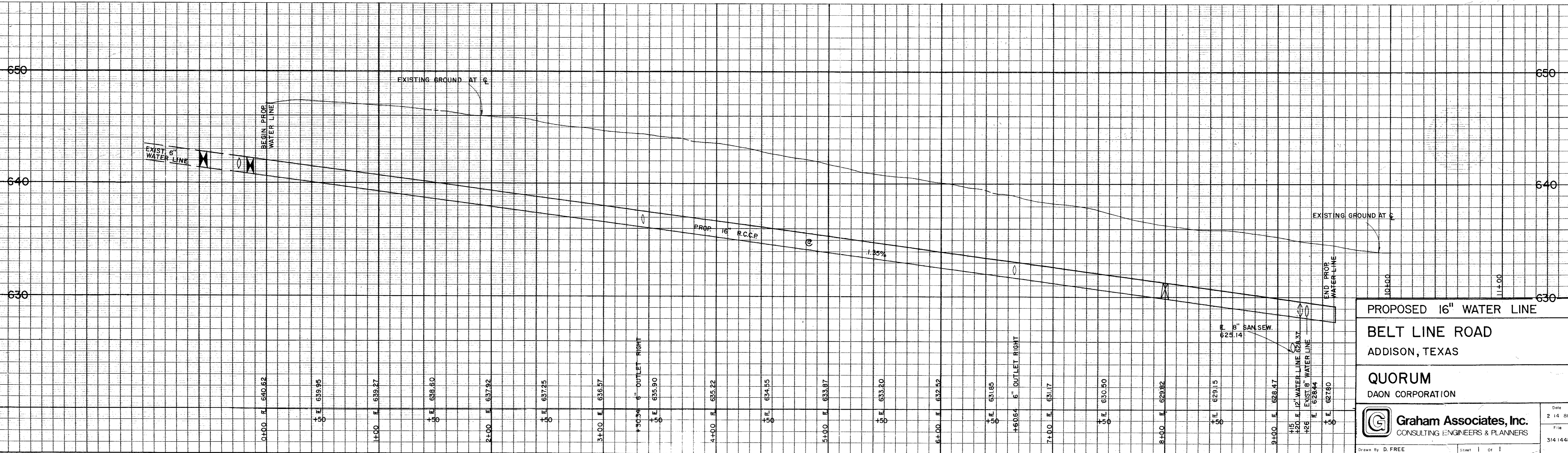
34009 10/28/81  
A 3/4" x 3/4" x 3/4" x 3/4"

34009 10/28/81  
A 3/4" x 3/4" x 3/4" x 3/4"



SCALE 1" = 40' HORZ.  
1" = 4' VERT.

BENCHMARK ELEV 633.56  
"1" CUT IN S.W. CORNER OF CONC. SLAB AT MOBILE SITE.



**PROPOSED 16" WATER LINE**  
**BELT LINE ROAD**  
 ADDISON, TEXAS

**QUORUM**  
 DAON CORPORATION

**Graham Associates, Inc.**  
 CONSULTING ENGINEERS & PLANNERS

Drawn By: D. FREE

Date: 2-14-80  
 File: 314 1448

DATE: 2-14-80  
 DRAWN: D. FREE  
 CHECKED: [unclear]

DATE: 2-14-80  
 DRAWN: D. FREE  
 CHECKED: [unclear]