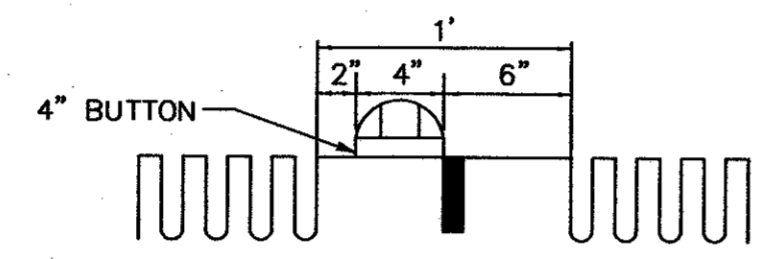
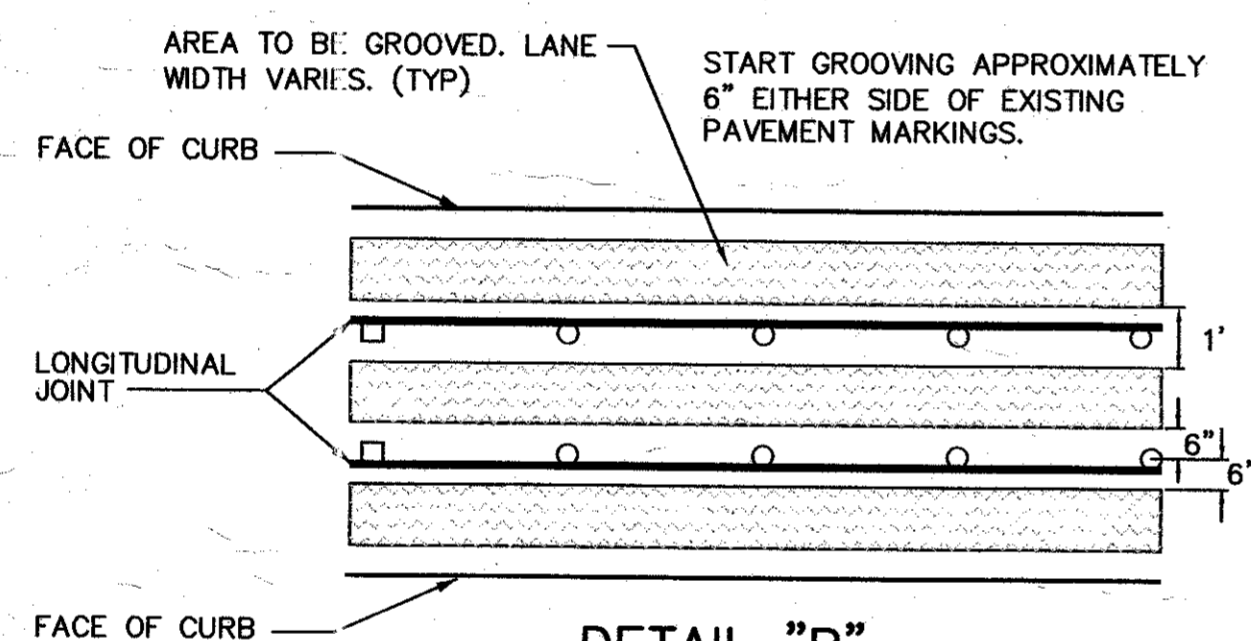


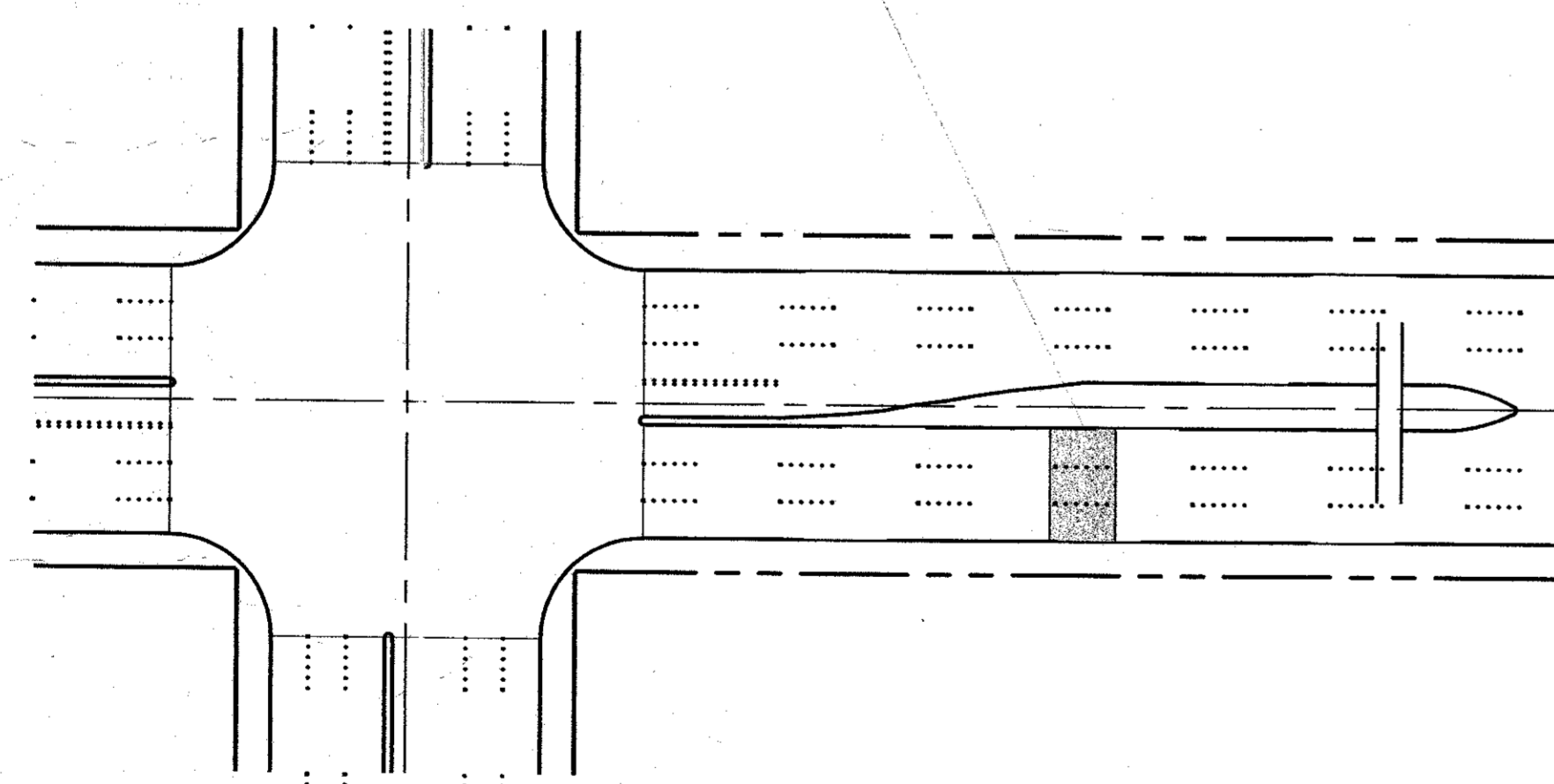
PAVEMENT GROOVE SPACING
NTS



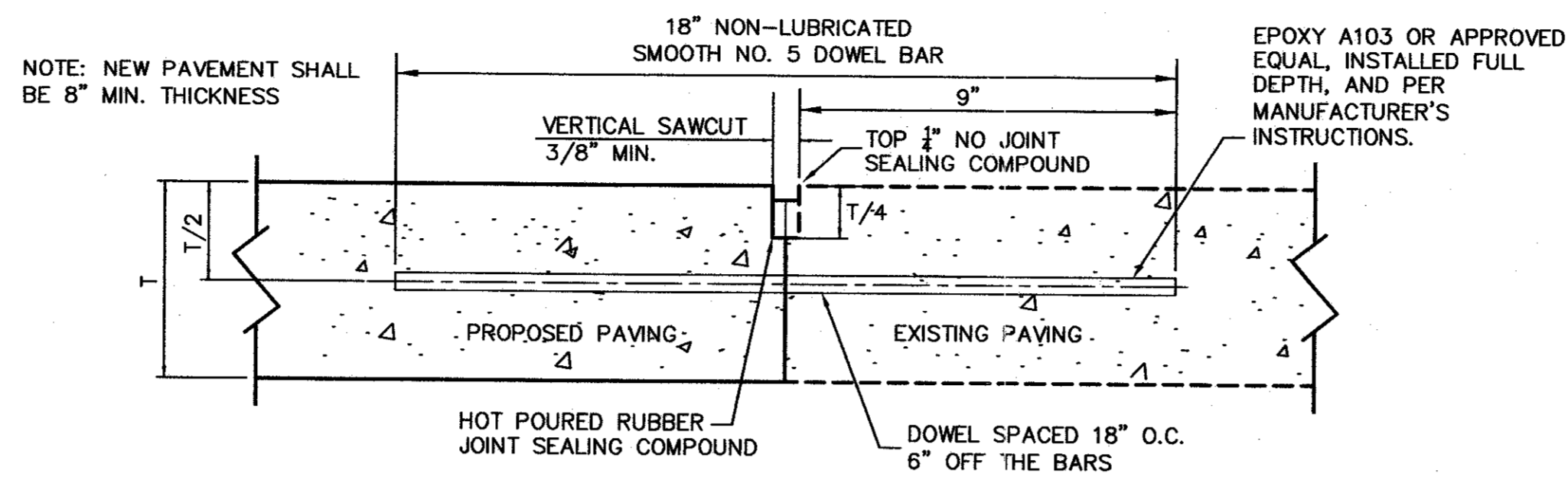
DETAIL "C"
NTS



DETAIL "B"
NTS



PAVEMENT GROOVING DETAILS
NTS

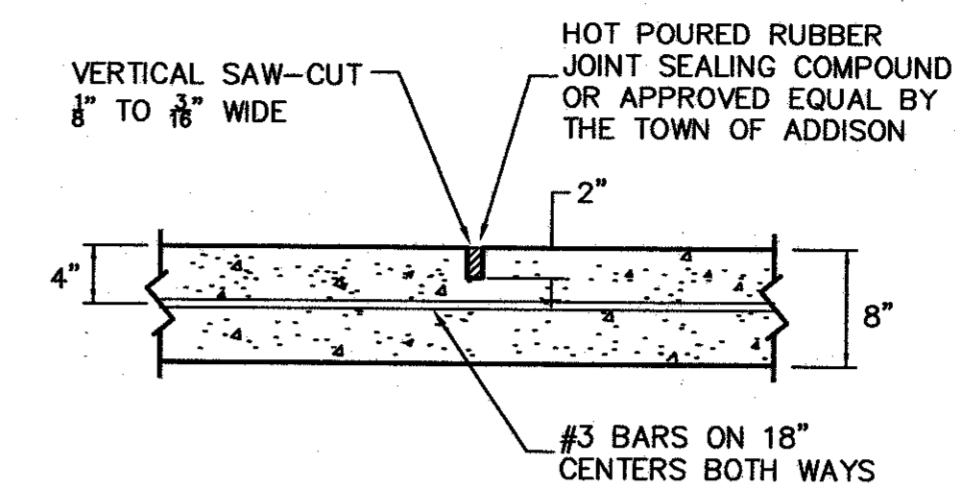


NOTE: NEW PAVEMENT SHALL BE 8" MIN. THICKNESS

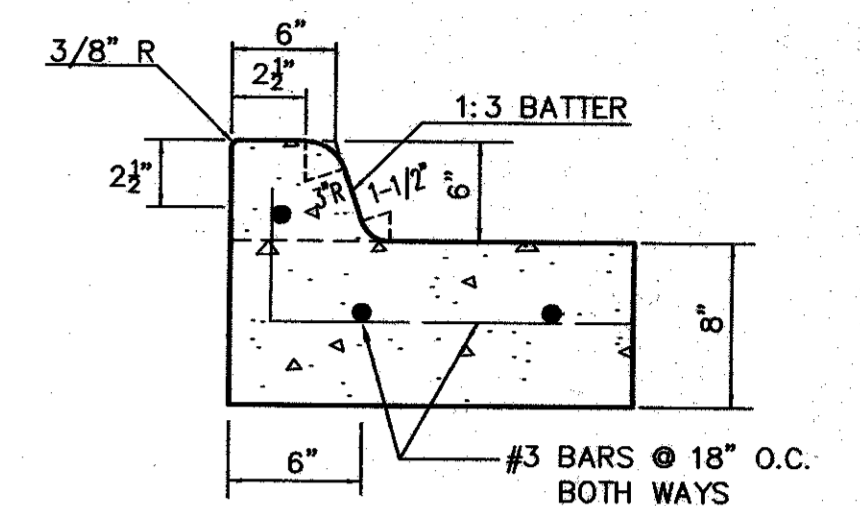
NOTE: DOWEL BARS SHALL BE DRILLED INTO PAVEMENT HORIZONTALLY BY USE OF A MECHANICAL RIG. DRILLING BY HAND IS NOT ACCEPTABLE. PUSHING DOWEL BARS INTO GREEN CONCRETE IS NOT ACCEPTABLE.

NOTE: #4 DOWEL BAR MAY BE SUBSTITUTED FOR PAVEMENT THICKNESSES 6" OR LESS.

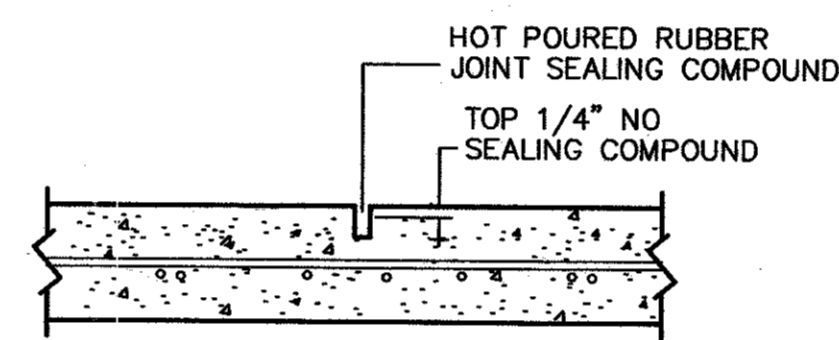
CONNECTION TO EXISTING PAVEMENT
NTS



SECTION SAWED DUMMY JOINT
NTS

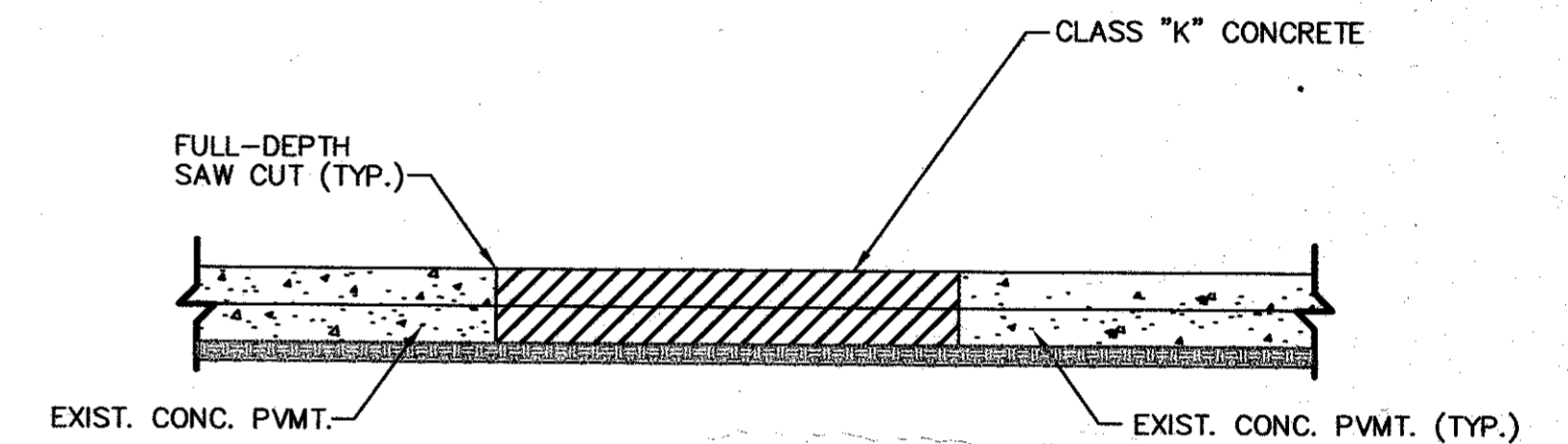


6" INTEGRAL CURB DETAIL
NTS



1. REMOVE EXISTING JOINT MATERIAL
2. SANDBLAST JOINT
3. REMOVE SAND FROM JOINTS
4. RESEAL JOINTS AS SHOWN

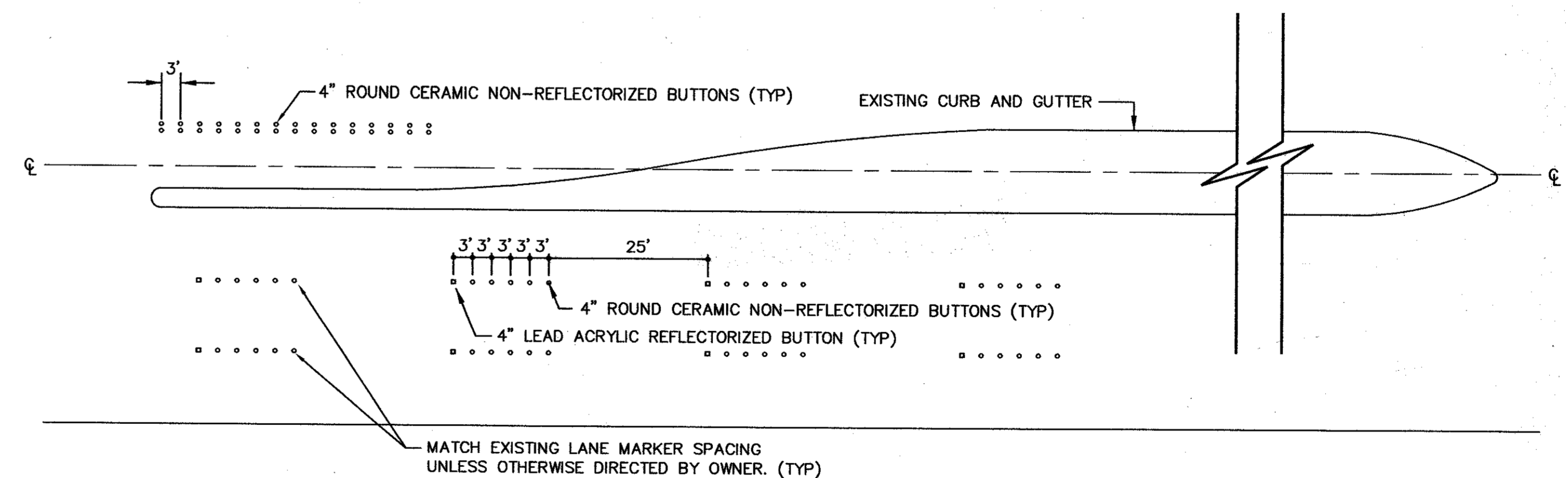
TRANSVERSE & LONGITUDINAL JOINT REPLACEMENT
NTS



NOTE:

1. DOWEL INTO EXISTING PAVEMENT OR TIE ONTO EXISTING REBAR.
2. THICKNESS AND REINFORCEMENT TO MATCH ADJACENT PAVEMENT

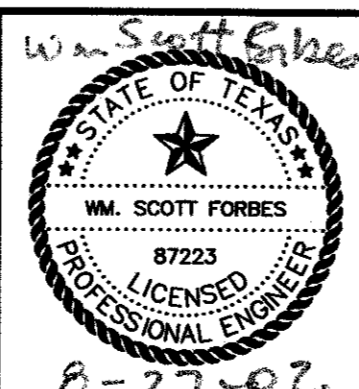
CONCRETE PAVEMENT REPAIR
N.T.S.



TRAFFIC BUTTONS/MARKERS
NTS

NO.	REVISION	BY	DATE

DESIGNED BY: DRS
 DRAWN BY: PBSJ
 CHECKED BY: WSF
 SCALE: VARIES
 DATE: AUGUST 2002
 FILE: 949-DETAIL.DWG



PBSJ
 5999 Summerside Drive, Suite 202
 Dallas, Texas 75252 (972)380-2605

Town of Addison
 Dallas County
 Texas

BELT LINE ROAD
 PAVEMENT GROOVING IMPROVEMENTS
"DETAIL SHEET"
 TOWN OF ADDISON
 AUGUST, 2002

SHEET NO. 6
 OF 6 SHEETS
 JOB NO. 450949