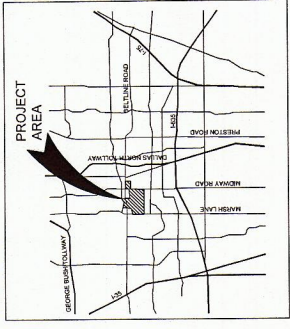


KEY MAP



Project Name

Addison Pedestrian Connection

Addison, TX.

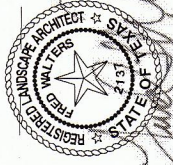
Project No: 14002

Issue Title

Bid Documents

Issue Date: 06.04.2014

Seal



This drawing and the design shown is the property of MESA Landscape Architect. It is to be used only for the project and site shown. No part of this drawing may be reproduced or transmitted in any form or by any means, electronic, mechanical, photocopying, recording, or by any information storage and retrieval system, without the prior written permission of MESA. The reproduction, copying, or use of this drawing without the prior written permission of MESA is prohibited. © Copyright 2013, MESA.

Issue / Addenda / Revisions

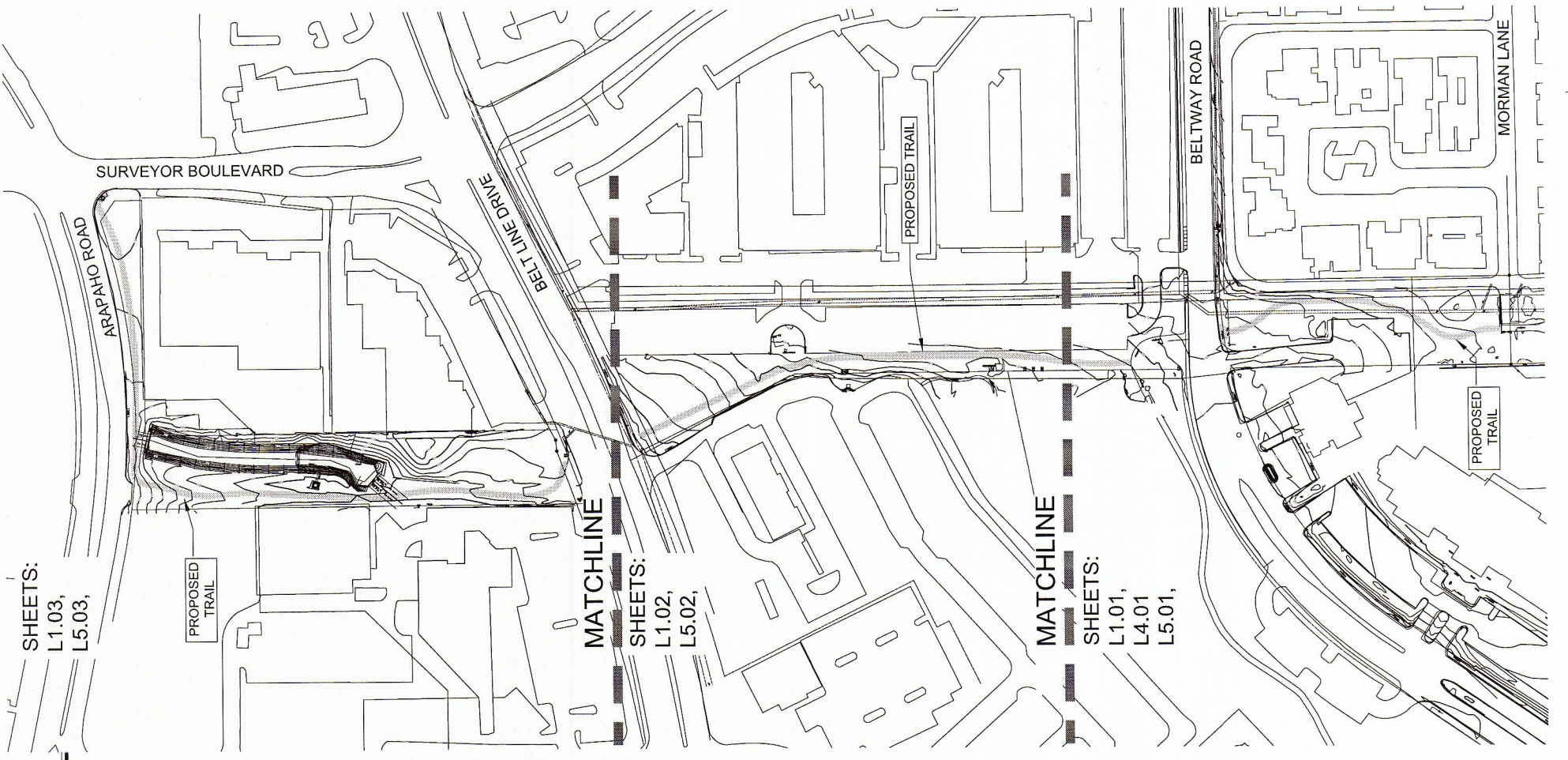
Date	Description
02.14.2014	90% Review
06.04.2014	100% Review
06.25.2014	100% Review - Town Comments

Drawing Title

Addison Pedestrian Connection: Phase 1 General Notes, Materials, Legend and Overall Site Plan

Sheet No.

L0.02



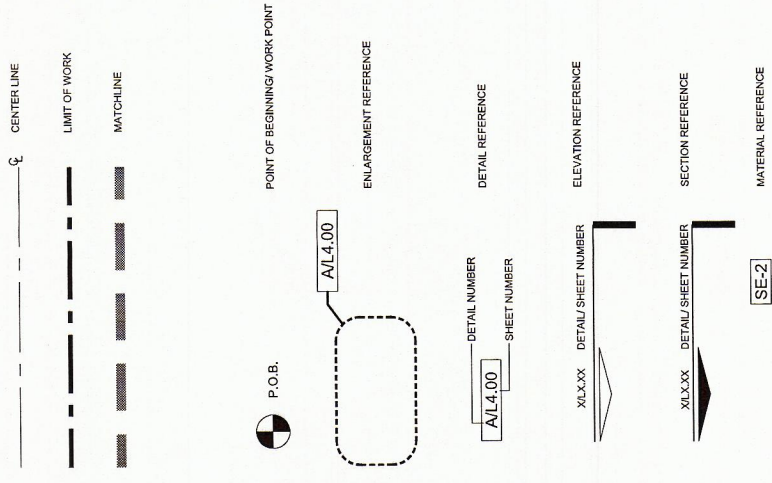
Overall Site Plan

Scale: 1" = 100'-0"

Overall Site Plan

Scale: 1" = 100'-0"

SYMBOLS LEGEND:



GENERAL NOTES:

1. WRITTEN DIMENSIONS PREVAIL OVER SCALED DIMENSIONS. NOTIFY LANDSCAPE ARCHITECT OF ANY DISCREPANCIES. IN THE FIELD PRIOR TO CONSTRUCTION OF UNDERGROUND UTILITIES, PIPES, STRUCTURES, AND LINE RUNS SHALL BE VERIFIED FOR ACCURACY. MESA ASSUMES NO RESPONSIBILITY FOR ANY UTILITIES NOT SHOWN ON PLANS.
2. ALL PROPOSED AND FINISHED GRADES ARE BASED ON INFORMATION PROVIDED BY THE SURVEY AND/OR CIVIL ENGINEER IMMEDIATELY PRIOR TO CONSTRUCTION. VERIFY ALL ACTUAL FIELD MEASUREMENTS TO BE TO THE LANDSCAPE ARCHITECT.
3. PRIOR TO COMMENCEMENT OF HARDSCAPE CONSTRUCTION, ALL PIERS, FOOTINGS, AND WALLS ARE TO BE SURVEYED. THE CONTRACTOR IS RESPONSIBLE FOR VERIFYING ALL UNDERGROUND UTILITIES, PIPES, STRUCTURES, AND LINE RUNS IN THE FIELD PRIOR TO CONSTRUCTION TO AVOID THE INSTALLATION OF ANY PLANT MATERIAL.
4. IT IS THE RESPONSIBILITY OF THE CONTRACTOR TO ADVISE THE LANDSCAPE ARCHITECT OF ANY CONDITION FOUND ON THE SITE THAT MAY AFFECT THE CONSTRUCTION OF THE HARDSCAPE OR THE INSTALLATION OF ANY PLANT MATERIAL.
5. LANDSCAPE CONTRACTOR IS RESPONSIBLE FOR ALL COORDINATION WITH OTHER CONTRACTORS ON SITE AS REQUIRED TO ACCOMPLISH ALL PLANTING OPERATIONS.
6. TO MAINTAIN A HEALTHY AND GROWING CONDITION AND MUST BE REPLACED WITH PLANT MATERIAL OF SAME VARIETY AND SIZE IF DAMAGED, DESTROYED, DEAD AND/OR REMOVED.
7. LANDSCAPE CONTRACTOR SHALL BE RESPONSIBLE FOR FINE GRADING AND REMOVAL OF DEBRIS AND UNWANTED VEGETATION FROM THE PROJECT SITE.
8. ADDITIONAL FRAGILE NATIVE BLACK CLAY TOPSOIL REQUIRED TO CREATE A SMOOTH CONDITION SUITABLE FOR PLANTING.
9. VERIFY ALL QUANTITIES AND TO PROVIDE ALL MATERIALS NECESSARY FOR FULL COVERAGE IN ALL PLANTING AREAS AS SPECIFIED ON THE DRAWINGS.

CONCRETE NOTES:

See bid drawings for concrete notes

PLANTING NOTES: GRASS ESTABLISHMENT

1. LANDSCAPE CONTRACTOR SHALL BE RESPONSIBLE FOR VERIFYING THE LOCATION OF ALL UNDERGROUND UTILITIES, PIPES, STRUCTURES, AND LINE RUNS IN THE FIELD PRIOR TO THE INSTALLATION OF ANY PLANT MATERIAL.
2. IT IS THE RESPONSIBILITY OF THE CONTRACTOR TO ADVISE THE LANDSCAPE ARCHITECT OF ANY CONDITION FOUND ON THE SITE THAT MAY AFFECT THE CONSTRUCTION OF THE HARDSCAPE OR THE INSTALLATION OF ANY PLANT MATERIAL.
3. LANDSCAPE CONTRACTOR IS RESPONSIBLE FOR ALL COORDINATION WITH OTHER CONTRACTORS ON SITE AS REQUIRED TO ACCOMPLISH ALL PLANTING OPERATIONS.
4. TO MAINTAIN A HEALTHY AND GROWING CONDITION AND MUST BE REPLACED WITH PLANT MATERIAL OF SAME VARIETY AND SIZE IF DAMAGED, DESTROYED, DEAD AND/OR REMOVED.
5. LANDSCAPE CONTRACTOR SHALL BE RESPONSIBLE FOR FINE GRADING AND REMOVAL OF DEBRIS AND UNWANTED VEGETATION FROM THE PROJECT SITE.
6. ADDITIONAL FRAGILE NATIVE BLACK CLAY TOPSOIL REQUIRED TO CREATE A SMOOTH CONDITION SUITABLE FOR PLANTING.
7. VERIFY ALL QUANTITIES AND TO PROVIDE ALL MATERIALS NECESSARY FOR FULL COVERAGE IN ALL PLANTING AREAS AS SPECIFIED ON THE DRAWINGS.

IRRIGATION NOTES

1. CONTRACTOR SHALL INVESTIGATE ALL EXISTING IRRIGATION COMPONENTS (FLAG ALL HEADS, VALVE BOXES, AND OTHER IRRIGATION EQUIPMENT).
2. CONTRACTOR SHALL REROUTE EXISTING IRRIGATION SYSTEM TO FIT NEW TRAIL AND RELATED HARDSCAPE WORK.
3. CONTRACTOR SHALL VERIFY ALL EXISTING IRRIGATION SYSTEMS AND PROVIDE TEMPORARY IRRIGATION SYSTEM WITHIN ALL NON-IRRIGATED AREAS. CONTRACTOR SHALL PROVIDE TEMPORARY IRRIGATION BY TRUCK AND/OR HAND WATERING TO ESTABLISH NEW TURF (SOIL OR SEED) AREAS.
4. ALL IRRIGATION SHALL CONFORM TO TOWN OF ADDISON IRRIGATION SPECIFICATION DETAILS DATED 05.09.2014.

GRADING NOTES

1. WRITTEN DIMENSIONS AND GRADES PREVAIL OVER SCALED DIMENSIONS. NOTIFY LANDSCAPE ARCHITECT OF ANY DISCREPANCIES.
2. CONTRACTOR SHALL BE RESPONSIBLE FOR MAKING HIMSELF FAMILIAR WITH ALL UNDERGROUND UTILITIES, PIPES, STRUCTURES AND LINE RUNS.
3. CONTRACTOR SHALL BE RESPONSIBLE FOR ANY EXCAVATION OR GRADING SHOWN ON SURVEY'S OR CIVIL ENGINEER'S PLANS. ALL PROPOSED AND FINISHED GRADES ARE BASED ON INFORMATION PROVIDED BY THE OWNERS SURVEY AND/OR CIVIL ENGINEER. ANY DISCREPANCIES IN FIELD MEASUREMENTS ARE TO BE REPORTED TO THE LANDSCAPE ARCHITECT AND/OR CIVIL ENGINEER IMMEDIATELY.
4. PROVIDED BY MESA DESIGN GROUP ARE PROVIDED FOR CONVENIENCE ONLY AND SHALL NOT BE CONSIDERED ABSOLUTE. LANDSCAPE ARCHITECT SHOULD BE NOTIFIED OF ANY GRADING DISCREPANCIES. CONTRACTORS ARE TO VERIFY ALL QUANTITIES AND TO PROVIDE ALL MATERIALS NECESSARY FOR FULL COVERAGE IN ALL PLANTING AREAS AS SPECIFIED ON THE DRAWINGS.
5. CONTRACTOR TO ENSURE THAT ALL GRADES COMPLY WITH ADA AND T&S STDS. LONGITUDINAL SLOPES MAX 4.9% AND CROSS SLOPES MAX 1.9%. NOTIFY LANDSCAPE ARCHITECT OF ANY DISCREPANCIES.
6. PRIOR TO CONSTRUCTION, CONTRACTOR TO ENSURE POSITIVE DRAINAGE AND NOTIFY LANDSCAPE ARCHITECT OF ANY DISCREPANCIES.

MATERIAL LEGEND:

CONCRETE PRODUCTS

- [C-1] STANDARD CONCRETE PAVING
MANUFACTURER: LOCAL
PRODUCT: STANDARD GRAY CONCRETE, 3000 PSI, LIGHT BROOM FINISH
- [C-2] BASE BID
STAINED CONCRETE PAVING
SUPPLIER: SCOFFIELD LITHOCHROME CHEMSTAIN. COLOR TO BE SELECTED AFTER MOCK-UP SAMPLES. COLOR SUGGESTED: CS-14 "DARK WALNUT". APPLY PER MANUFACTURER'S SPECIFICATIONS. LOCAL SCOFFIELD REP: JIM ORELLA 972.893.9730.
- [C-3] STAINED ACCENT BAND CONCRETE PAVING
SUPPLIER: SCOFFIELD LITHOCHROME CHEMSTAIN. COLOR TO BE SELECTED AFTER MOCK-UP SAMPLES. COLOR SUGGESTED: CS-15 "ANTIQUE AMBER". APPLY PER MANUFACTURER'S SPECIFICATIONS. LOCAL SCOFFIELD REP: JIM ORELLA 972.893.9730.

ADD ALTERNATE

- [C-4] INTEGRAL COLORED CONCRETE PAVING
MANUFACTURER: LOCAL
PRODUCT: INTEGRAL COLORED CONCRETE, SCOFFIELD INTEGRAL COLOR. COLOR TO BE SELECTED AFTER MOCK-UP SAMPLES. FOLLOWED BY "CAST CHESTNUT". APPLY PER MANUFACTURER'S SPECIFICATIONS. LOCAL SCOFFIELD REP: JIM ORELLA 972.893.9730.
REFERENCE TOWN OF ADDISON STAGING DETAILS FOR CONSTRUCTION.
- [C-5] INTEGRAL COLORED ACCENT BAND CONCRETE PAVING
MANUFACTURER: LOCAL
PRODUCT: INTEGRAL COLORED CONCRETE, SCOFFIELD INTEGRAL COLOR. COLOR TO BE SELECTED AFTER MOCK-UP SAMPLES. FOLLOWED BY SCOFFIELD LITHOCHROME COLORWAX. COLOR SUGGESTED: SGM472. LOCAL SCOFFIELD REP: JIM ORELLA 972.893.9730.
REFERENCE TOWN OF ADDISON STANDARD DETAILS FOR CONSTRUCTION.

CERAMIC PRODUCTS

- [R-1] ROAD REFLECTOR
LOCAL
PRODUCT: YELLOW CERAMIC # ROUND ROAD REFLECTOR

NOTE

SHADED AREA FOR TRAIL AND APPROXIMATELY 10' EITHER SIDE OF TRAIL REPRESENTS THE GENERAL LIMITS OF WORK. REFER TO ALL GRADING SHEETS FOR ACCURATE LIMITS OF DISTURBANCE AND CORRESPONDING LIMITS OF WORK.