

NO.	DATE	REVISION	APPROV.
1			
2			
3			
4			
5			

GRANTHAM & ASSOCIATES
THIS DOCUMENT REPRESENTS
WORK-IN-PROGRESS AND IS
NOT TO BE USED FOR
CONSTRUCTION OR PERMITTING

R. CHRISTOPHER
REGISTERED PROFESSIONAL ENGINEER
TEXAS REG. NO. 107252

EROSION CONTROL PLAN NOTES, CONT'D

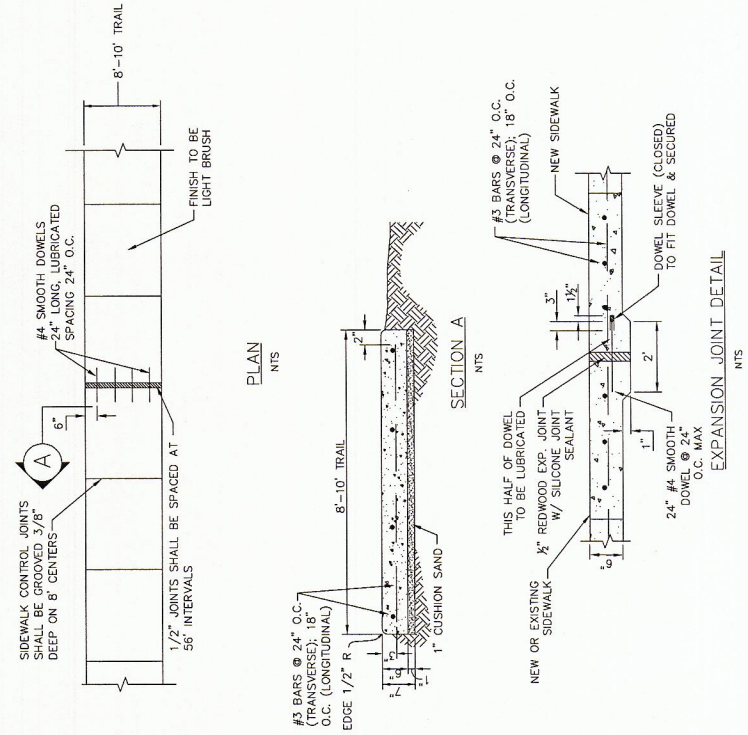
- IT SHALL BE THE CONTRACTOR'S RESPONSIBILITY TO CONTROL AND LIMIT SILT AND SEDIMENT LEAVING THE SITE. SPECIFICALLY, THE CONTRACTOR SHALL PROTECT ALL PUBLIC STREETS, ALLEYS, STREAMS AND STORM DRAINAGE SYSTEMS FROM EROSION DEPOSITS.
- CONSTRUCTION WASTE DISPOSAL CONTAINERS SHALL BE PROVIDED ON THE SITE FOR DISPOSAL OF ALL NON-HAZARDOUS CONSTRUCTION WASTE MATERIALS. THE CONTAINERS SHALL BE HAULED LANDFILL BY THE CONTRACTOR.
- ALL HAZARDOUS MATERIALS SHALL BE HANDLED AND DISPOSED OF BY THE CONTRACTOR IN ACCORDANCE WITH FEDERAL, STATE AND LOCAL REGULATIONS.

SILT FENCE NOTES

- POSTS WHICH SUPPORT THE SILT FENCE SHALL BE INSTALLED ON A SLIGHT ANGLE, TOWARD THE ANTICIPATED RUNOFF SOURCE. THE POST MUST BE EMBEDDED A MINIMUM OF 18 INCHES.
- THE TOP OF THE SILT FENCE SHALL BE TRENCHED IN WITH A SPADE OR MECHANICAL TRENCHER, SO THAT THE DOWNSIDE FACE OF THE TRENCH IS FLAT AND PERPENDICULAR TO THE LINE OF FLOW. WHERE FENCE CANNOT BE TRENCHED IN (E.G. PAVEMENT), WEIGHT FABRIC FLAP WITH WASHED GRAVEL ON THE UPHILL SIDE TO PREVENT FLOW UNDER FENCE.
- THE TRENCH MUST BE A MINIMUM OF 6 INCHES DEEP AND 6 INCHES WIDE TO ALLOW FOR THE SILT FENCE FABRIC TO BE LAID IN THE GROUND AND BACKFILLED WITH COMPACTED MATERIAL.
- SILT FENCE SHALL BE SECURELY FASTENED TO EACH SUPPORT POST OR TO WOVEN WIRE, WHICH IS IN FASTENED WHERE ENDS OF FABRIC MEET.
- INSPECTION SHALL BE MADE EVERY TWO WEEKS OR AFTER EACH RAINFALL. REPAIR OR REPLACEMENT SHALL BE PROMPTLY AS NEEDED.
- SILT FENCE SHALL BE REMOVED WHEN THE SITE IS COMPLETELY STABILIZED SO AS NOT TO BLOCK OR IMPEDE STORM FLOW OR DRAINAGE.
- ACCUMULATED SILT SHALL BE REMOVED WHEN IT REACHES A DEPTH OF 3 INCHES. THE SILT SHALL BE DISPOSED OF AT AN APPROVED SITE AND IN SUCH A MANNER AS TO NOT CONTRIBUTE TO ADDITIONAL SILTATION.

CIVIL QUANTITIES

ITEM NO.	DESCRIPTION	UNIT	TOTAL
C-1	Barricading and Traffic Control	LS	1
C-2	Erosion Control & SWPPP Preparation	LS	1
C-3	Saw cut, Remove & Dispose Concrete Curb & Gutter	LF	78
C-4	Saw cut, Remove & Dispose Concrete Sidewalk	SY	116
C-5	Unclassified Excavation	LS	1
C-6	Construct 6" Class "A" Reinforced Concrete Trail	SY	1,993
C-7	Construct Barrier Free Ramp	SY	35
C-8	Furnish and Install Traffic Sign	EA	6
C-9	Furnish and Install Yield Line Markings	LF	41
C-10	Relocate Traffic Signal Box, Conduit and Wire	EA	1
C-11	Furnish and Install TxDOT Type C Pedestrian Rail Painted Black	LF	148
C-12	Furnish and Install Removable Bollard	EA	12
C-13	Furnish and Install Project Sign	EA	2



TYPICAL SECTION & DETAILS

GENERAL NOTES FOR PEDESTRIAN FACILITIES

- ALL SLOPES ARE MAXIMUM ALLOWABLE. THE LEAST POSSIBLE SLOPE THAT WILL STILL DRAIN PROPERLY SHOULD BE USED. ADJUST CURB RAMP LENGTH OR GRADE OF APPROACH SIDEWALKS AS DIRECTED.
- LANDINGS SHALL BE 5'x5' MINIMUM WITH A MAXIMUM 2% SLOPE IN ANY DIRECTION.
- WALKING SPACE AT THE BOTTOM OF CURB RAMPS SHALL BE A MINIMUM OF 4'x4' UNLESS OTHERWISE NOTED. WALKING SPACE SHALL BE MAINTAINED WITHIN THE PARALLEL VEHICULAR TRAVEL PATH.
- MAXIMUM ALLOWABLE CROSS SLOPE ON SIDEWALK AND CURB RAMP SURFACES IS 2%.
- CURB RAMPS WITH RETURNED CURBS MAY BE USED ONLY WHERE PEDESTRIANS WOULD NOT NORMALLY WALK ACROSS THE RAMP. RETURNED CURBS SHALL BE INSTALLED WITH A MINIMUM OF 1/2" CLEARANCE FROM THE SIDEWALK SURFACE. THE SIDE APPROACH IS SUBSTANTIALLY OBSTRUCTED. OTHERWISE, PROVIDE FLARED SIDES.
- ADDITIONAL INFORMATION ON CURB RAMP LOCATION, DESIGN, LIGHT REFLECTIVE VALUE AND TEXTURE MAY BE FOUND IN THE CURRENT EDITION OF THE TEXAS ACCESSIBILITY STANDARDS (14S) AND 16 TAC §68.102.
- CURB RAMPS SHALL BE ALIGNED WITH THEORETICAL CROSSWALKS, OR AS DIRECTED BY THE TOWN ENGINEER.
- HANDRAILS ARE NOT REQUIRED ON CURB RAMPS. PROVIDE CURB RAMPS WHEREVER ON ACCESSIBLE ROUTE CROSSES (PENETRATES) A CURB.
- FLARE SLOPE SHALL NOT EXCEED 10% MEASURED ALONG CURB LINE.
- BARRIER FREE RAMPS SHALL BE CONSTRUCTED IN ACCORDANCE WITH THE CURRENT EDITION OF THE TEXAS ACCESSIBILITY STANDARDS (14S).
- ALL BARRIER FREE RAMPS MUST PASS AN INDEPENDENT INSPECTION. A LETTER OF COMPLIANCE ACCEPTANCE IS REQUIRED PRIOR TO FINAL ACCEPTANCE BY THE TOWN OF ADDISON.
- STREETS ON STEEP GRADE WILL REQUIRE LONGER TRANSITION ON UPGRADE SIDE.
- MAXIMUM SLOPE ON RAMP PORTION SHALL NOT EXCEED 1" PER FOOT AT ANY LOCATION. VERTICAL DISTANCE BETWEEN STREET AND RAMP SHALL NOT EXCEED 4".

GENERAL NOTES FOR DETECTABLE WARNINGS

- CURB RAMPS MUST CONTAIN A DETECTABLE WARNING SURFACE THAT CONSIST OF RAISED TRUNCATED DOMES COMPLYING WITH SECTION 4.29 OF THE TEXAS ACCESSIBILITY STANDARDS (14S). THE SURFACE SHALL BE 48" WIDE BY 48" LONG. THE DOMES SHALL BE 0.5" HIGH, 0.5" SPACING, 0.5" DIA. THE SURFACE SHALL BE FINISHED WITH A NON-SLIP SURFACE. UNLESS OTHERWISE NOTED, THE SURFACE SHALL BE UNCOLORED CONCRETE AND CREAM COLORED DETECTABLE WARNING SURFACE ADJACENT TO DARK RED COLORED BRICK PAVERS.
- DETECTABLE WARNING SURFACES MUST BE SLIP RESISTANT AND NOT ALLOW WATER TO ACCUMULATE.
- ALIGN TRUNCATED DOMES IN THE DIRECTION OF PEDESTRIAN TRAVEL WHEN ENTERING THE STREET.
- DETECTABLE WARNING SURFACES SHALL BE A MINIMUM OF 24" IN DEPTH IN THE DIRECTION OF PEDESTRIAN TRAVEL, AND EXTEND THE FULL WIDTH OF THE CURB RAMP OR LANDING WHERE THE PEDESTRIAN ACCESS ROUTE ENTERS THE STREET.
- DETECTABLE WARNING SURFACES SHALL BE LOCATED SO THAT THE EDGE NEAREST THE CURB LINE IS WITHIN A MINIMUM OF 8" FROM THE EXTENSION OF THE FACE OF THE CURB AND SHALL BE AN INTEGRAL PART OF THE WALKING SURFACE. DETECTABLE WARNING SURFACES MAY BE CURVED ALONG THE CORNER RADIUS.

GENERAL NOTES FOR DETECTABLE WARNING PAVER UNITS

- DETECTABLE WARNING PAVER UNITS SHALL MEET OR EXCEED ALL REQUIREMENTS OF ASTM C-936, C-33, AND BE LAID IN A TWO BY TWO UNIT BASKET WEAVE PATTERN OR AS DIRECTED.
- LAY FULL-SIZE UNITS FIRST FOLLOWED BY CLOSURE UNITS, CONSISTING OF AT LEAST 25 PERCENT OF A FULL UNIT. CUT DETECTABLE WARNING PAVER UNITS USING A POWER SAW.

EROSION CONTROL PLAN NOTES

- ALL OPERATORS AND/OR CONTRACTORS SHALL CONFORM TO THE TERMS AND CONDITIONS OF THE PERMIT ISSUED BY THE TOWN OF ADDISON. THE PERMIT SHALL BE OBTAINED PRIOR TO THE COMMENCEMENT OF WORK. THE PERMIT SHALL BE OBTAINED FROM THE TOWN OF ADDISON, 150000 ISSUED AND DATED MARCH 5, 2003.
- THE NOTICE OF INTENT (NOI), AS REQUIRED BY THE GENERAL PERMIT, MUST BE PROPERLY PREPARED AND DISPLAYED ON SITE AT ALL TIMES BY EACH OPERATOR.
- ALL RELEASES OF THE REPORTABLE QUANTITIES OF HAZARDOUS SUBSTANCES SHALL BE REPORTED IMMEDIATELY TO THE FACILITY OPERATOR, EPA AND TCEQ.
- QUALIFIED OPERATOR PERSONNEL MUST INSPECT THE SITE AT LEAST ONCE EVERY 14 DAYS AND WITHIN 24 HOURS OF A STORM EVENT OF 0.5 INCHES OR GREATER. AS AN ALTERNATIVE, AN INSPECTION CAN BE CONDUCTED ONCE EVERY SEVEN (7) CALENDAR DAYS ON A DEFINED DAY. A DECISION ON WHICH METHOD TO USE MUST BE DECIDED BEFORE WORK BEGINS AND MUST BE FOLLOWED THROUGHOUT THE PROJECT.
- MODIFICATIONS TO THE STORM WATER POLLUTION PREVENTION PLAN SHALL BE IMPLEMENTED AND BE IN-PLACE WITHIN A SEVEN CALENDAR DAY PERIOD.
- IF ANY CONTRACTOR SEES A VIOLATION BY AN OPERATOR OR ANOTHER CONTRACTOR, THAT OPERATOR OR CONTRACTOR IN VIOLATION SHALL BE NOTIFIED AS WELL AS THE FACILITY OPERATOR.
- EROSION CONTROL SHALL BE INSTALLED PRIOR TO GRADING.
- ACCUMULATED SILT DEPOSITS SHALL BE REMOVED FROM SILT FENCES AND HAY BALE DIKES WHEN SILT DEPTH REACHES THREE INCHES OR 25%.
- THE CONTRACTOR SHALL ADD OR DELETE EROSION PROTECTION AT THE REQUEST AND DIRECTION OF THE OPERATOR OR TOWN.
- AFTER INSTALLATION OF PAVEMENT, FINAL LOT BOUNDING AND GENERAL CLEANUP, THE CONTRACTOR SHALL RESTORE ALL DISTURBED AREAS TO ORIGINAL CONDITION. LOT AND ALL OTHER DISTURBED AREAS, SODDING SHALL BE DONE AS SPECIFIED BY SECTION 202.5 AND SEEDING AS SPECIFIED BY SECTION 202.6 OF THE OCTOBER 2004 OR LATEST EDITION OF NCTCOG STANDARD SPECIFICATION.

GENERAL NOTES

- ALL CONSTRUCTION SHALL BE IN STRICT ACCORDANCE WITH THE CONSTRUCTION STANDARDS OF THE TOWN OF ADDISON AND GOVERNED BY THE NORTH CENTRAL TEXAS COUNCIL OF GOVERNMENT'S (NCTCOG) STANDARD SPECIFICATIONS FOR PUBLIC WORKS CONSTRUCTION, 3RD EDITION.
- IN CASE OF CONFLICT OR CONTRADICTIONS BETWEEN THE CONSTRUCTION STANDARDS OF THE TOWN OF ADDISON AND THE NCTCOG SPECIFICATIONS, THE CONSTRUCTION STANDARDS OF THE TOWN OF ADDISON PRESIDE.
- IT IS THE CONTRACTOR'S RESPONSIBILITY TO MAKE ARRANGEMENTS WITH THE OWNERS OF UNDERGROUND FACILITIES PRIOR TO WORKING IN THE AREA TO CONFIRM THEIR LOCATION. THE CONTRACTOR SHALL PRESERVE AND PROTECT ALL UNDERGROUND FACILITIES.
- WHERE EXISTING UTILITIES OR SERVICE LINES ARE CUT, BROKEN OR DAMAGED, THE CONTRACTOR SHALL REPLACE OR REPAIR THE UTILITIES OR SERVICE LINES WITH THE SAME TYPE OF ORIGINAL MATERIAL AND CONSTRUCTION, OR BETTER, UNLESS OTHERWISE SHOWN OR NOTED ON THE PLANS, AT HIS OWN COST AND EXPENSE. THE CONTRACTOR SHALL IMMEDIATELY NOTIFY THE TOWN AT ONCE OF ANY CONFLICTS IN GRADES AND ALIGNMENT.
- FOR FRANCHISE UTILITY LOCATOR SERVICES, CALL TEXAS 811.
- THE CONTRACTOR SHALL RESTORE ALL AREAS DISTURBED BY CONSTRUCTION TO ORIGINAL CONDITION OR BETTER. RESTORED AREAS INCLUDE, BUT ARE NOT LIMITED TO TRENCH BACKFILL, SIDE SLOPES, FENCES, CULVERT PIPES, DRAINAGE DITCHES, IRRIGATION, SODDING OR SEEDING, DRIVEWAYS, PRIVATE YARDS AND ROADWAYS.
- THE CONTRACTOR SHALL TAKE ALL NECESSARY PRECAUTIONS TO PROTECT EXISTING FACILITIES FROM DAMAGE. ANY DAMAGE TO EXISTING FACILITIES RESULTING FROM CONSTRUCTION WORK SHALL BE REPAIRED AT THE CONTRACTOR'S EXPENSE.
- ALL EXCESS EXCAVATED MATERIAL AND STRIPPINGS SHALL BECOME THE PROPERTY OF THE CONTRACTOR AND SHALL BE DISPOSED OF IN A PROPER MANNER OFF THE PROJECT SITE.

SAFETY

- ALL CONTRACTORS AND DEVELOPERS, WITH THEIR EMPLOYEES AND AGENTS, SHALL COMPLY WITH ALL APPLICABLE FEDERAL, STATE AND LOCAL SAFETY LAWS AND REGULATIONS INCLUDING BUT NOT LIMITED TO THE OCCUPATIONAL SAFETY AND HEALTH ACT OF 1970, ORDINANCES, RULES, REGULATIONS AND ORDERS OR ANY PUBLIC AUTHORITY HAVING JURISDICTION FOR THE SAFETY OF PERSONS OR PROPERTY TO PROTECT THEM FROM DAMAGE, INJURY OR LOSS. THE CONTRACTOR SHALL PROVIDE, ERECT AND MAINTAIN AS REQUIRED BY EXISTING CONDITIONS ALL MAINTAINING SIGNS IN ACCORDANCE WITH THE MOST CURRENT BARRETT'S CONSTRUCTION SAFETY STANDARDS FROM THE TEXAS MANUAL OF UNIFORM CONTROL DEVICES (AND ANY AMENDMENTS THEREON) AND ALL OTHER SAFETY STANDARDS NECESSARY BY THE TOWN ENGINEER). PROMULGATED SAFETY REGULATIONS AND NOTICING OWNERS AND USERS OF ADJACENT UTILITIES, SAFETY PRECAUTIONS SHALL INCLUDE BUT NOT BE LIMITED TO COMPLIANCE WITH ALL FEDERAL, STATE AND LOCAL STANDARDS, LAWS, ORDINANCES AND STANDARDS FOR DESIGN AND IMPLEMENTATION OF TRENCH SAFETY, CONFINED SPACE, TRAFFIC CONTROL, AND UTILITY NOTIFICATION.

PAVING - GENERAL NOTES

- REINFORCED CONCRETE PAVEMENT:
 - CONCRETE STRENGTH SHALL BE AS SHOWN IN ITEM 3 (NCTCOG LATEST EDITION).
 - ALL CURBS SHALL BE INTEGRAL WITH PAVEMENT AND SHALL BE OF THE SAME STRENGTH AS CONCRETE PAVEMENT.
 - DETAIL AND ARRANGEMENT OF PAVEMENT JOINTS, ALL TYPES, SHALL BE AS SHOWN ON THE TOWN STANDARD CONSTRUCTION DETAILS UNLESS OTHERWISE NOTED.
 - BAR LAPS SHALL BE THIRTY DIAMETERS.
 - REINFORCING STEEL SHALL BE AS SHOWN ON THE TOWN STANDARD CONSTRUCTION DETAILS UNLESS OTHERWISE NOTED.
- REBAR SHALL BE SUPPORTED BY BAR CHAIRS OR OTHER DEVICES APPROVED BY TOWN ENGINEER.
- PAVEMENT THICKNESS AND STRENGTHS SHALL BE AS FOLLOWS:
 - STREET - 8" CLASS "P1" OR "P2," SIDEWALK AND BFR-6" - CLASS "A"
 - CONCRETE MIX DESIGN SHALL BE AS DEFINED BY NCTCOG 303.3.
- ONCE A CURB ABUTTING A THOROUGHFARE HAS BEEN SAWCUT AND REMOVED, THE CONTRACTOR MUST REPLACE THE CONCRETE WITH A NEW POUR (I.E. DRIVEWAY) WITHIN 14 CALENDAR DAYS. LIQUIDATED DAMAGES WILL BE ASSESSED AT \$500 PER DAY FOR EACH CALENDAR DAY IN EXCESS OF 14 CALENDAR DAYS.
- ALL SIDEWALKS AND ACCESSIBLE ROUTES SHALL HAVE A MAXIMUM LONGITUDINAL SLOPE OF 5% AND A MAXIMUM CROSS SLOPE OF 2%.
- SPACING AND CONSTRUCTION OF JOINTS SHALL CONFORM TO TOWN OF ADDISON CONCRETE SIDEWALK EXPANSION JOINT DETAIL UNLESS OTHERWISE NOTED.
- ALL SIDEWALK REINFORCEMENT SHALL BE #3 STEEL 24" O.C. (TRANSVERSE) 18" O.C. (LONGITUDINAL).
- 1-INCH CUSHION SAND REQUIRED ON SUBGRADE COMPACTED WITHIN 95% STANDARD PROCTOR DENSITY.
- POURS SHALL REQUIRE A PRE-POUR INSPECTION FOR FORMWORK, REINFORCEMENT AND GEOMETRY. VISUAL INSPECTIONS MAY BE MADE AFTER THE POUR TO ADDRESS TOoled JOINTS, FINISH, SUBGRADE INTEGRITY, ETC.
- ENSURE THAT FLATWORK DOES NOT OBSCURE ABOVE-GROUND APPURTENANCES (I.E. VALVES, MH LIDS)
- EXPOSED AGGREGATE CONCRETE IS NOT ACCEPTABLE FOR SIDEWALK WITHIN PUBLIC RIGHT-OF-WAY.
- FOR CURB DETAIL SEE CURB AND GUTTER & ASPHALT PAVING CROSS SECTION

SURVEY LEGEND:

○	CO	☐	MALBOX	●	PP	○	CREPE MYRTLE
①	TELEPHONE MH	⊕	SIGNAL BOX	⊕	LAMP POST	⊕	MISC. TREE
②	ELECTRIC MH	⊕	TELEPHONE RISER	⊕	WATER VALVE	⊕	PINE TREE
③	SANITARY SEWER MH	⊕	IRRIGATION CONTROL VALVE	⊕	WATER METER	⊕	OAK TREE
④	STORM DRAIN MH	⊕	GAS METER	⊕	FIRE HYDRANT	⊕	PECAN TREE
⑤	GAS MH	⊕	FIRE HYDRANT	⊕	MISC. MH	⊕	ASH TREE
⑥	STREET SIGN	⊕	MISC. MH	⊕	PECAN TREE	⊕	CEDAR TREE