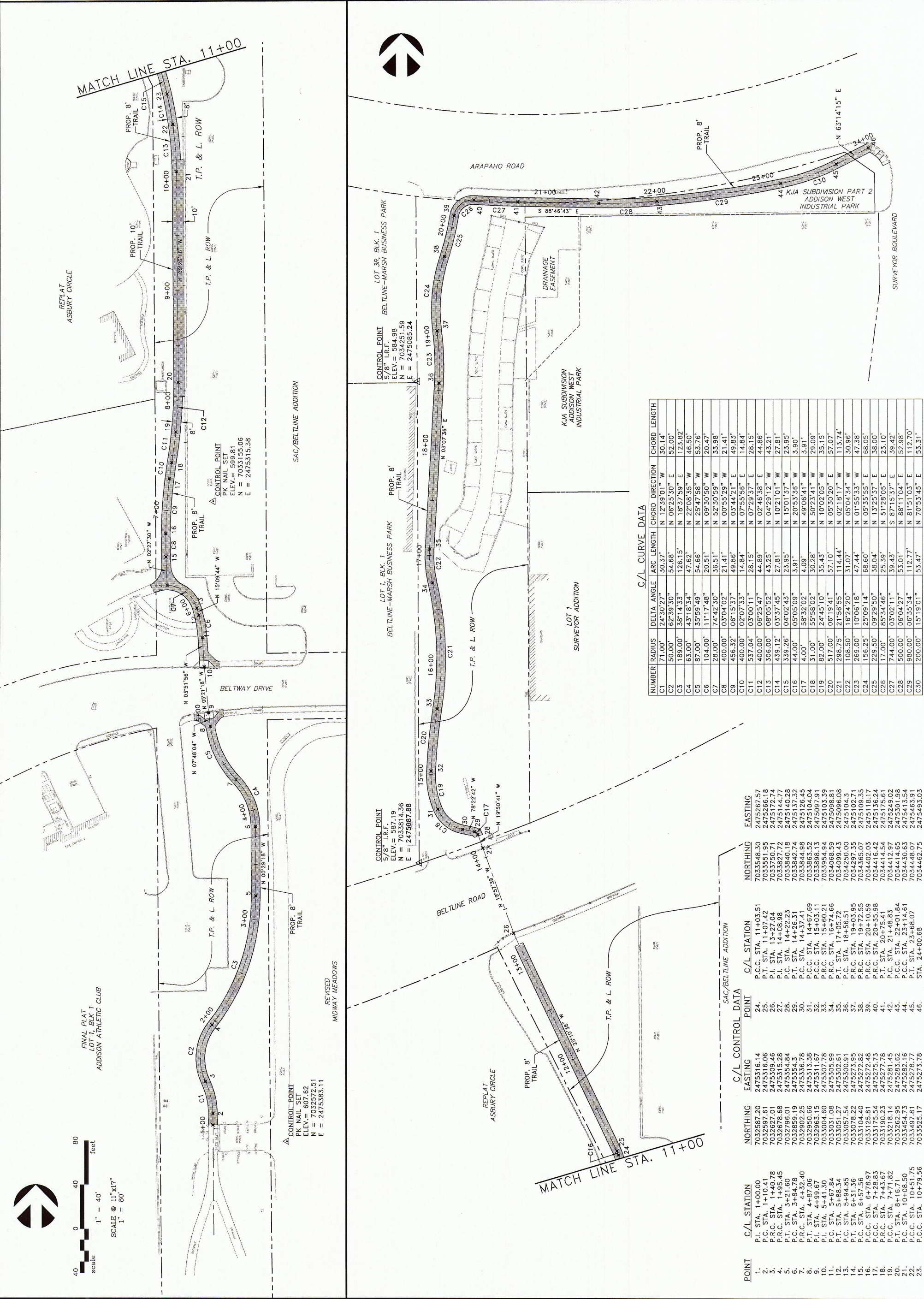


NO.	DATE	REVISION	APPROV.
1			
2			
3			
4			
5			
6			

GRANTHAM & ASSOCIATES
F-005438
THIS DOCUMENT REPRESENTS
WORK PROVIDED FOR THE
CONSTRUCTION OF PERMITTING
CONSTRUCTION OR PERMITTING

P. CHRISTOPHER ROBINSON
TEXAS P.E. NO. 101252

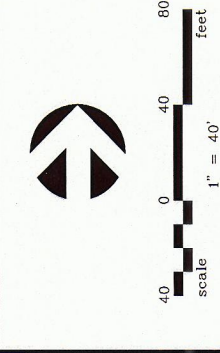


C/L CURVE DATA

NUMBER	RADIUS	DELTA ANGLE	ARC LENGTH	CHORD DIRECTION	CHORD LENGTH
C1	71.00'	24.30° 27'	30.37'	N 12° 39' 01" W	30.14'
C2	50.00'	62° 39' 30"	54.68'	N 06° 25' 30" E	52.00'
C3	189.00'	38° 14' 33"	126.15'	N 18° 37' 59" E	123.82'
C4	63.00'	43° 18' 34"	47.62'	N 22° 08' 35" W	46.50'
C5	87.00'	35° 59' 49"	54.66'	N 25° 47' 58" W	53.76'
C6	104.00'	11° 17' 48"	20.51'	N 09° 30' 50" W	20.47'
C7	28.00'	74° 42' 30"	36.51'	N 52° 30' 59" W	33.98'
C8	400.00'	03° 04' 02"	21.41'	N 00° 55' 28" W	21.41'
C9	456.32'	08° 15' 37"	49.86'	N 03° 44' 21" E	49.83'
C10	400.00'	02° 07' 33"	14.84'	N 07° 29' 37" E	14.84'
C11	537.04'	02° 00' 11"	28.15'	N 07° 29' 37" E	28.15'
C12	400.00'	08° 25' 47"	44.89'	N 02° 48' 38" E	44.86'
C13	306.00'	08° 05' 52"	43.25'	N 04° 29' 12" W	43.21'
C14	438.12'	03° 37' 45"	27.81'	N 10° 21' 01" W	27.81'
C15	339.26'	04° 02' 43"	23.95'	N 15° 01' 37" W	23.95'
C16	44.00'	05° 02' 09"	3.91'	N 20° 53' 36" W	3.90'
C17	4.00'	58° 52' 02"	4.09'	N 49° 06' 41" W	3.91'
C18	31.00'	55° 58' 02"	30.28'	N 50° 23' 41" W	29.09'
C19	82.00'	24° 45' 10"	35.43'	N 10° 02' 05" W	35.15'
C20	517.00'	08° 19' 41"	57.10'	N 05° 35' 20" W	57.07'
C21	296.75'	21° 56' 55"	114.44'	N 02° 18' 17" W	113.74'
C22	108.50'	16° 24' 20"	31.07'	N 01° 55' 33" W	30.96'
C23	269.00'	10° 06' 18"	47.44'	N 05° 55' 33" W	47.38'
C24	156.25'	25° 09' 14"	68.60'	N 13° 25' 37" E	68.05'
C25	229.50'	09° 29' 50"	38.04'	N 13° 25' 37" E	38.00'
C26	17.00'	85° 34' 46"	25.39'	S 87° 15' 37" E	23.10'
C27	744.00'	03° 02' 11"	53.01'	S 87° 15' 37" E	39.42'
C28	500.00'	06° 35' 34"	112.77'	N 88° 11' 04" E	52.98'
C29	800.00'	06° 35' 34"	112.77'	N 88° 11' 04" E	112.70'
C30	200.00'	15° 19' 01"	53.47'	N 70° 53' 45" E	53.31'

C/L CONTROL DATA

POINT	EASTING	NORTHING	C/L STATION	C/L POINT	
1.	703587.20	703515.14	P.C. STA. 1+00.00	24.	703556.30
2.	703297.61	703316.06	P.T. STA. 1+10.01	25.	703556.76
3.	7032627.01	2475309.46	P.I. STA. 13+27.04	26.	703556.76
4.	7032676.68	2475315.28	P.I. STA. 14+08.98	27.	2475172.24
5.	7032795.01	2475354.84	P.T. STA. 14+22.23	28.	7033827.72
6.	7032859.19	2475354.84	P.C. STA. 14+26.31	29.	7033840.18
7.	7032802.25	2475336.78	P.C. STA. 14+37.41	30.	7033844.98
8.	7032963.15	2475313.38	P.C.C. STA. 15+03.11	31.	7033863.52
9.	7033004.60	2475307.78	P.R.C. STA. 15+60.21	32.	7033888.13
10.	7033031.09	2475305.99	P.R.C. STA. 16° 47' 46"	33.	7033954.94
11.	7033061.85	2475306.51	P.C. STA. 17+56.51	34.	7034068.59
12.	7033057.54	2475300.91	P.C. STA. 18+56.51	35.	7034296.06
13.	7033078.22	2475272.82	P.R.C. STA. 19+03.95	36.	7034297.35
14.	7033104.40	2475272.82	P.R.C. STA. 19+72.55	37.	7034365.07
15.	7033125.81	2475275.73	P.R.C. STA. 20+10.59	38.	7034416.42
16.	7033175.23	2475275.73	P.R.C. STA. 20+35.98	39.	7034416.42
17.	7033190.23	2475281.45	P.T. STA. 20+75.41	40.	7034414.54
18.	7033218.14	2475281.45	P.C. STA. 21+48.83	41.	7034412.97
19.	7033267.95	2475282.62	P.C.C. STA. 22+01.84	42.	7034414.61
20.	7033454.73	2475282.16	P.C. STA. 23+14.61	43.	7034430.63
21.	7033495.11	2475278.78	P.C.C. STA. 23+66.07	44.	7034446.07
22.	7033525.17	2475273.78	STA. 24+08.86	45.	7034462.73
23.				46.	2475493.03



FINAL PLAT
LOT 1, BLK 1
ADDISON ATHLETIC CLUB

SCALE @ 1"=40'
1"=80'

CONTROL POINT
PK NAIL SET
ELEV. = 607.62
N = 7032572.51
E = 2475383.11

CONTROL POINT
5/8" I.R.F.
ELEV. = 584.98
N = 7034251.59
E = 2475085.24

CONTROL POINT
5/8" I.R.F.
ELEV. = 587.19
N = 7035814.36
E = 2475987.88

CONTROL POINT
5/8" I.R.F.
ELEV. = 584.98
N = 7034251.59
E = 2475085.24

CONTROL POINT
5/8" I.R.F.
ELEV. = 584.98
N = 7034251.59
E = 2475085.24

CONTROL POINT
5/8" I.R.F.
ELEV. = 584.98
N = 7034251.59
E = 2475085.24

CONTROL POINT
5/8" I.R.F.
ELEV. = 584.98
N = 7034251.59
E = 2475085.24