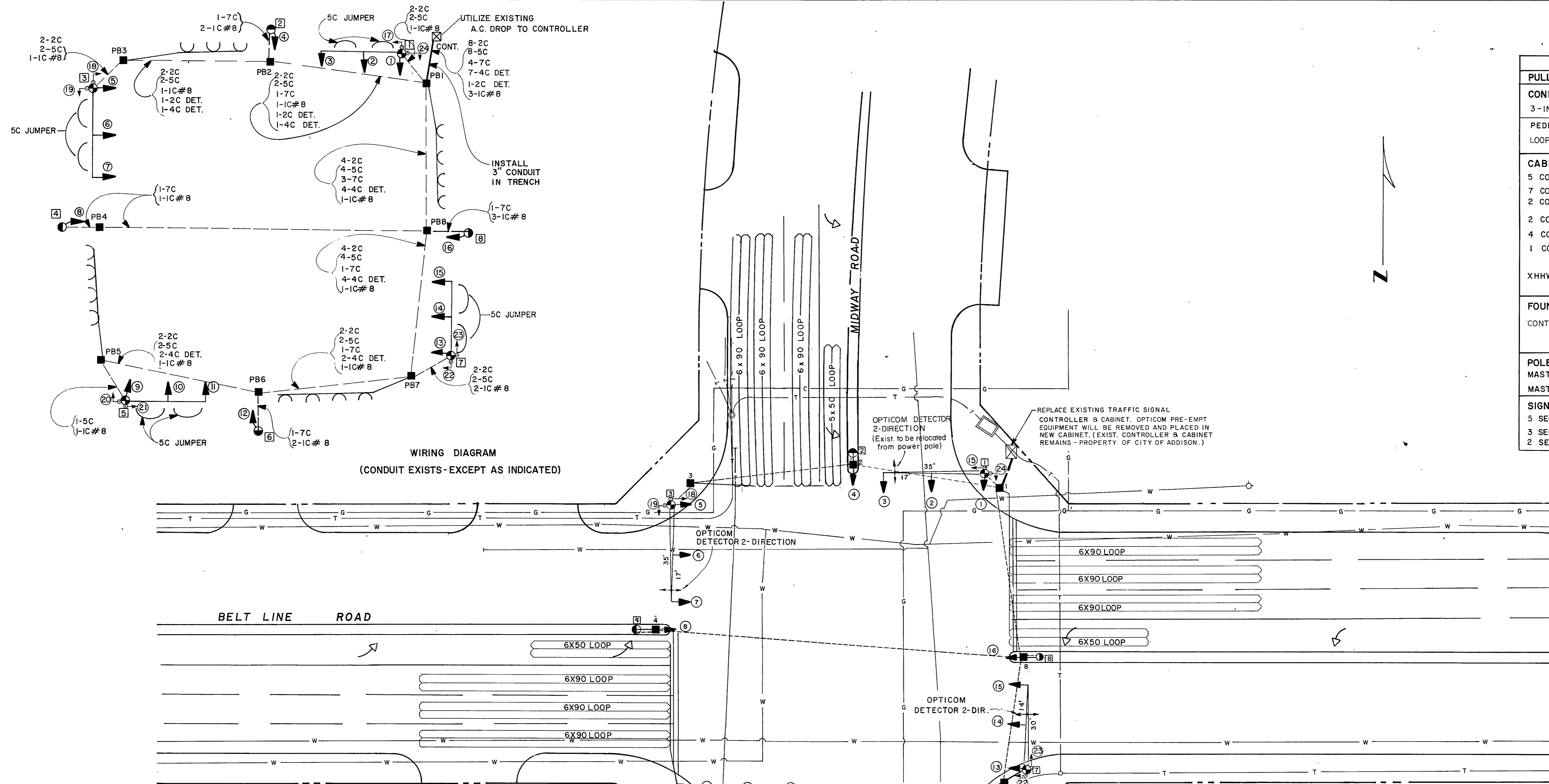


QUANTITIES

ITEM	UNIT	QUAN.
PULL BOX (EXISTING)		
CONDUIT:		
3-INCH P.V.C. (IN TRENCH)		25
PEDESTRIAN PUSH BUTTON	PR.	4
LOOP DETECTOR AMPLIFIER	EA.	16
CABLE - WIRE:		
5 CONDUCTOR # 12	L.F.	1710
7 CONDUCTOR # 12	L.F.	745
2 CONDUCTOR # 12 (PED. DET.)	L.F.	1440
2 CONDUCTOR DETECTOR	L.F.	160
4 CONDUCTOR DETECTOR	L.F.	1110
1 CONDUCTOR # 8-GROUND	L.F.	815
XHHW DETECTOR LOOP	L.F.	6790
FOUNDATIONS:		
CONTROLLER, IN PLACE	EA.	1
POLES: SIGNAL PEDESTAL		
MAST ARM POLE W/30' ARM	EA.	4
MAST ARM POLE W/35' ARM	EA.	2
SIGNAL HEADS:		
5 SECTION - 12" LENS	EA.	4
3 SECTION - 12" LENS	EA.	12
2 SECTION - 12" PEDESTRIAN	EA.	8



CONDUIT & CABLE QUANTITIES

FROM	TO	DISTANCE	PVC CONDUIT T-TRENCH P-PUSHED	CABLE						
				SWITCHING	DETECTOR	GRD	LOOP WIRE			
				5C	7C	2C (PED)	2C	4C	1C # 8	1C # 12
PB1	PB1	15'	3T-25'	200	100	200	25	175	65	1650
PB1	PB2	55'	E	130	65	130	65	65	20	
PB2	PB2	5'	E		20				35	
PB2	PB3	60'	E	140		140	70	70	65	1760
PB3	PB3	10'	E	50		40			15	
PB1	PB8	65'	E	300	225	300		300	70	
PB8	PB8	5'	E		20				50	
PB8	PB4	135'	E		145				140	
PB4	PB4	5'	E		20				10	
PB8	PB7	45'	E	220	55	220		220	50	1730
PB7	PB7	10'	E	50		40			45	
PB7	PB6	65'	E	150	75	150		150	70	
PB6	PB6	5'	E		20				35	
PB6	PB5	55'	E	130		130		130	60	1650
PB5	PB5	15'	E	60		50			25	
(JUMPERS)				230						
TOTALS		3" T-25'		1710	745	1440	160	1110	815	6790

E = EXISTING

SIGNAL HEAD ARRAYS

HEAD NUMBERS	1,2,3	5,6,7	4,8	17,18	21,22
LENS SIZE	12"	12"	12"	12"	12"
TYPE	CONV.	CONV.	CONV.	CONV.	CONV.
LENS CONFIGURATION	R	R	R	DW	DW
	Y	Y	Y	WALK	WALK
TOTAL NUMBER OF UNITS	G	G	G		
TOTAL NUMBER OF UNITS	6	6	4	4	4

LEGEND

- T TELEPHONE DUCT OR U.G. CABLE
- G GAS MAIN OR SERVICE LINE
- W WATER MAIN OR SERVICE LINE
- SS SANITARY OR STORM SEWER
- INSTALL OPTICOM DETECTOR 2-DIRECTION
- INSTALL OPTICOM DETECTOR 1-DIRECTION
- EXISTING CONDUIT FOR SIGNAL CABLE
- INSTALL CONDUIT-IN TRENCH
- INSTALL SIGNAL MAST ARM & POLE
- INSTALL TRAFFIC SIGNAL HEAD
- INSTALL SIGNAL PEDESTAL POLE
- EXISTING PULL BOX
- INSTALL PULL BOX
- SERVICE POLE - A.C. SOURCE
- INSTALL PEDESTRIAN SIGNAL HEAD
- INSTALL PEDESTRIAN PUSH BUTTON
- W/INTEGRAL ILLUMINATED SIGN

8 PHASE FULLY ACTUATED SIGNAL CONTROL

SEE SHEET 1 FOR PHASING DIAGRAM AND INTERVAL CHART
 THE EMERGENCY VEHICLE PRE-EMPT SYSTEM (3M-OPTICOM) EXIST IN ONE DIRECTION.
 THE EQUIPMENT WILL BE RELOCATED IN NEW CONTROLLER AND EXPANDED TO 4 DIRECTIONS PHASE A & B.

CITY OF ADDISON

TRAFFIC SIGNAL MODIFICATION
 BELT LINE ROAD
 INTERSECTION LAYOUT
 BELT LINE ROAD AND
 MIDWAY ROAD

GINN, INC.

DESIGNED: DATE: JUNE, 1980 FILE:
 APPROVED: CHECKED: SCALE: (PLAN) 1" = 20' SHEET: 3 OF 14