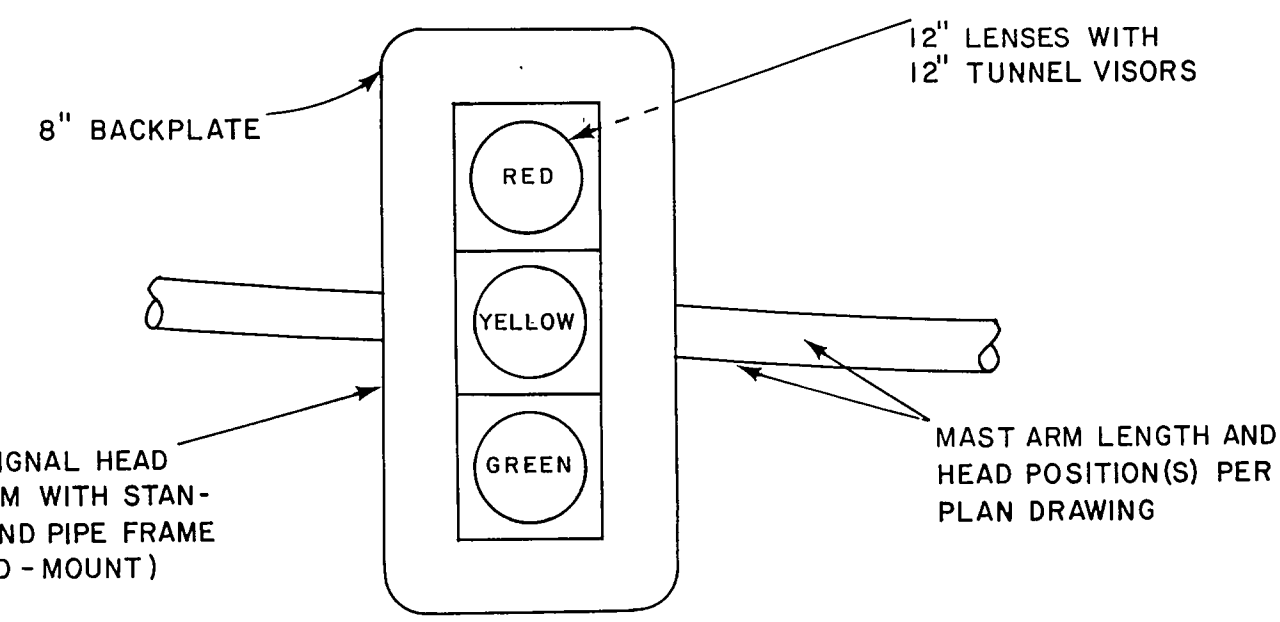
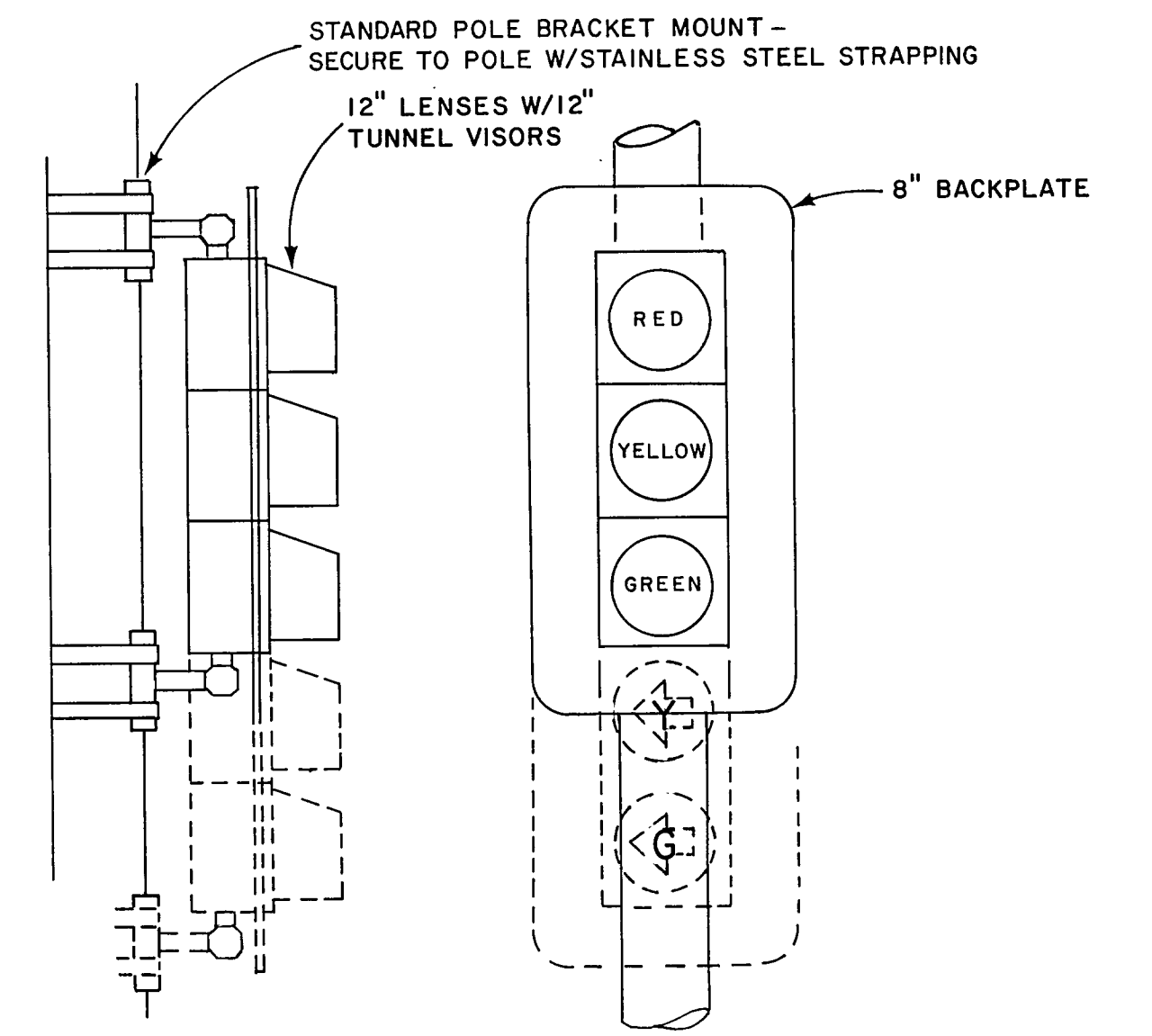


NOTE: PLUMBIZER MAY BE LOCATED BETWEEN YELLOW AND GREEN HEAD SECTION OF 5-LENS UNITS FOR HEAD STABILITY AND ROADWAY MINIMUM CLEARANCE REQUIREMENTS.

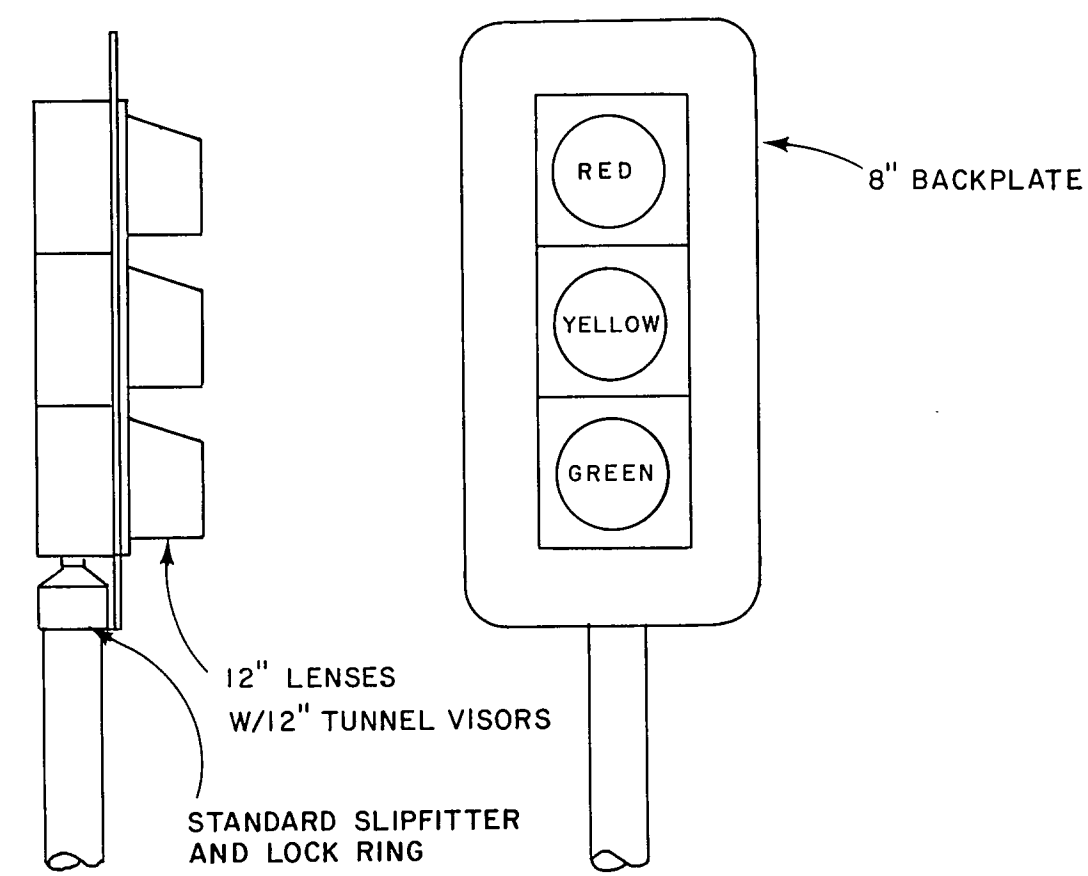


NOTE: SECURE SIGNAL HEAD ASSEMBLY TO ARM WITH STANDARD CLAMPS AND PIPE FRAME ASSEMBLY (RIGID-MOUNT)

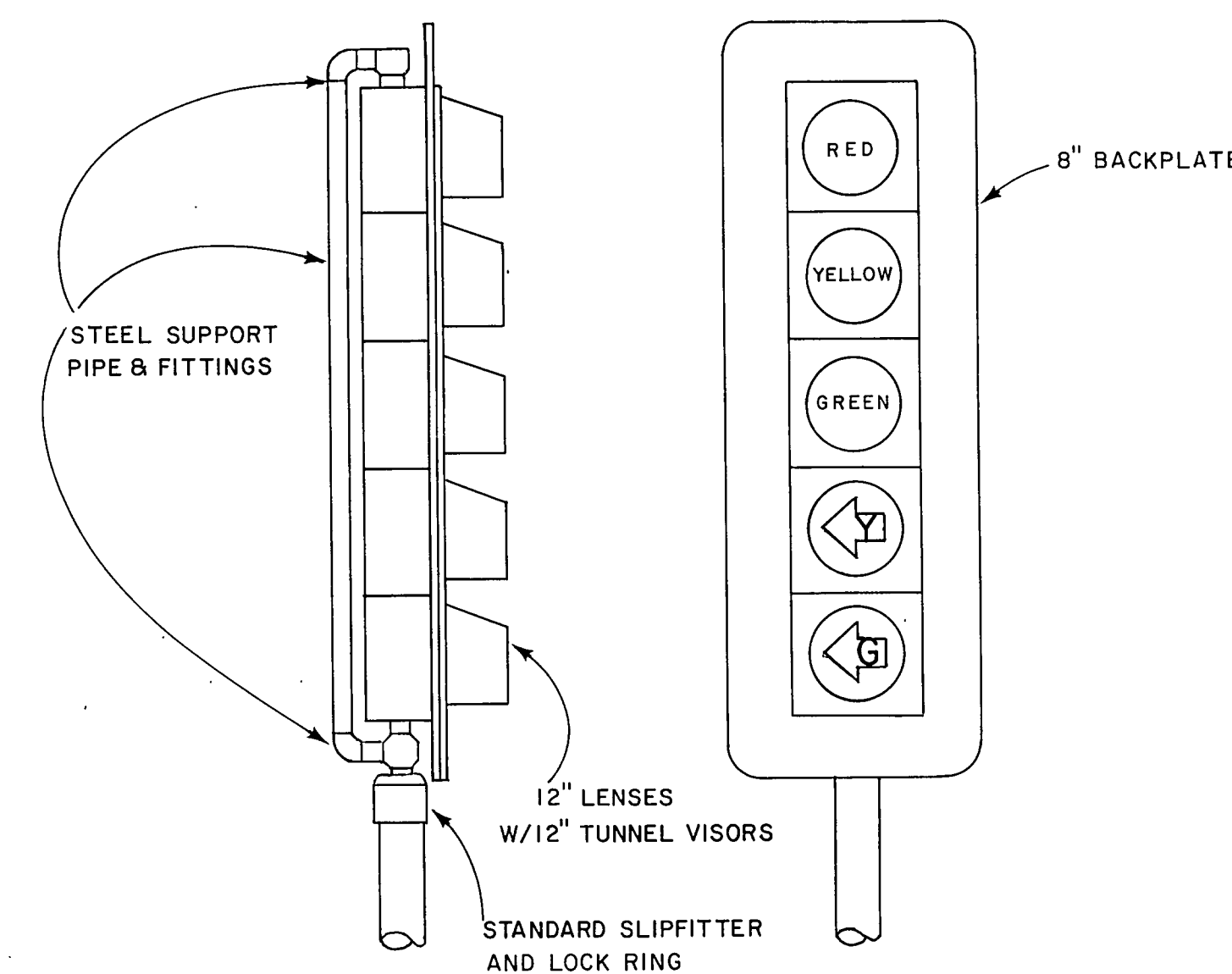


TYPICAL POLE MOUNT  
3-LENS OR 5-LENS HEAD

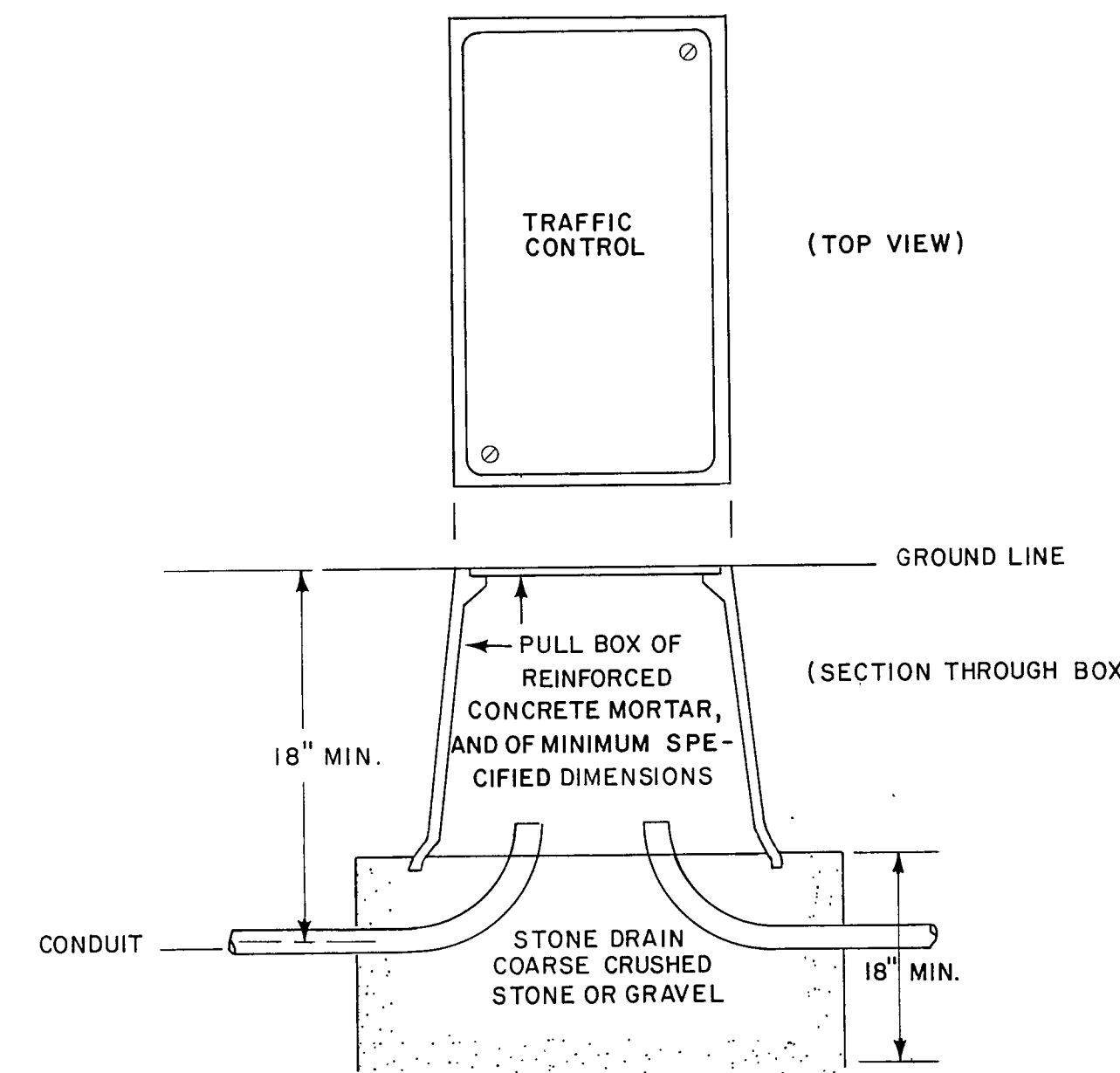
TYPICAL MAST-ARM MOUNTINGS



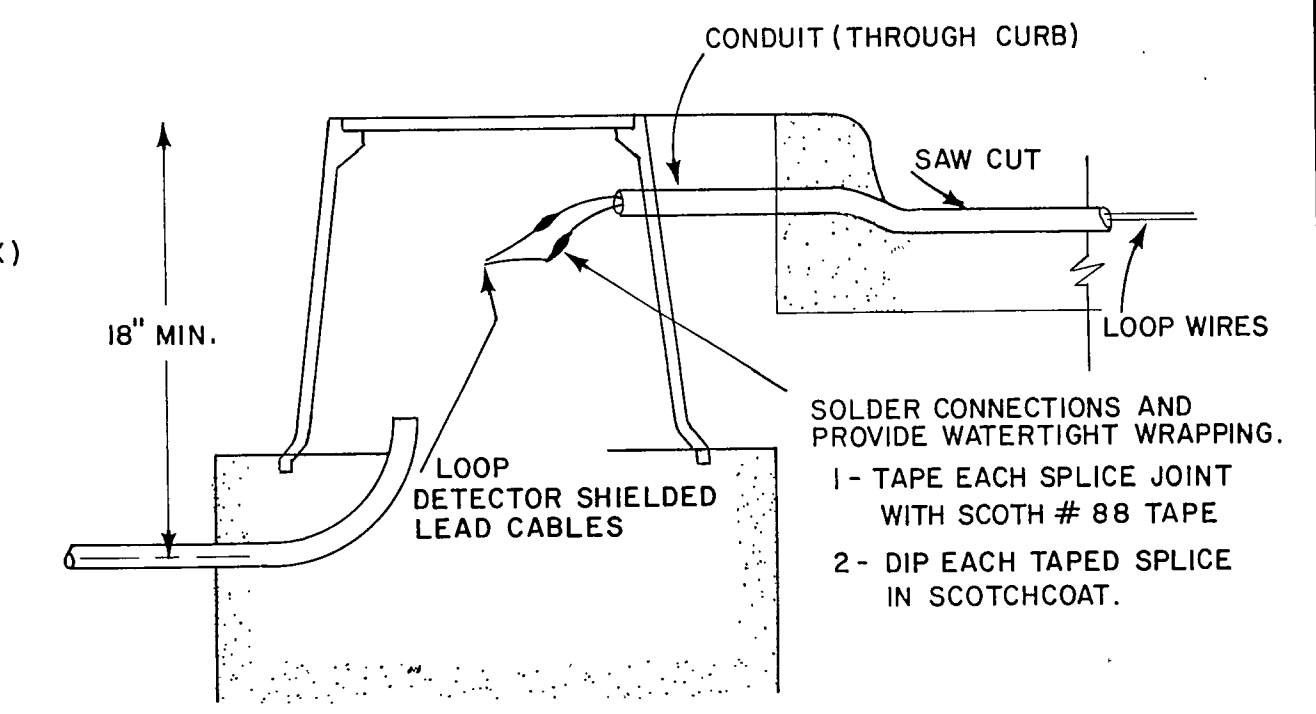
TYPICAL SIGNAL PEDESTAL  
TOP MOUNT - 3-LENS HEAD



TYPICAL SIGNAL PEDESTAL  
TOP MOUNT - 5-LENS HEAD



TYPICAL PULL BOX AND CONDUIT INSTALLATION



CONNECTION METHOD FOR LOOP WIRES AND  
LOOP DETECTOR LEAD-IN(S)

GENERAL NOTES FOR SIGNAL HEADS

1. PEDESTAL TOP-MOUNTED SIGNAL HEADS TO BE FURNISHED AS COMPLETE UNITS INCLUDING SLIP-FITTER, LOCK RING ATTACHMENT AND OTHER NECESSARY MOUNTING HARDWARE, PER DETAILS.
2. POLE MOUNTED SIGNAL HEADS TO BE FURNISHED AS COMPLETE UNITS INCLUDING FITTINGS, POLE-MOUNT BRACKETS, STAINLESS STEEL STRAPPING AND OTHER NECESSARY MOUNTING HARDWARE, PER DETAIL.
3. BOTTOM SECTION OF SIGNAL HEADS MUST HAVE CORRUGATIONS TO INSURE POSITIVE RADIAL POSITION LOCKING.
4. POST AND PEDESTAL TOP MOUNTED HEADS ARE TO HAVE A MINIMUM CLEARANCE TO GROUND LINE OF 7 FEET.
5. ALL MAST-ARM MOUNTED HEADS ARE TO HAVE A MINIMUM CLEARANCE TO HIGHEST POINT OF ROADWAY OF 17 FEET.
6. ALL SIGNAL HEADS TO BE EQUIPPED WITH 8" BACKPLATES, PER DETAILS.
7. CONTRACTOR SHALL PROVIDE SAME COLOR FOR THE SIGNAL HEADS AND HARDWARE AS IS CHOSEN FOR MAST ARMS AND POLES.

NOT TO SCALE

<b>CITY OF ADDISON</b>			
TRAFFIC SIGNAL INSTALLATIONS BELT LINE ROAD			
DETAILS			
TRAFFIC SIGNAL HEADS PULL BOXES-CONDUIT-LOOP CONNECTIONS			
<b>GINN, INC.</b>			
DESIGNED	DRAWN	DATE: JUNE 1980	FILE
APPROVED	CHECKED	SCALE: NOT TO SCALE	SHEET: 11 OF 14