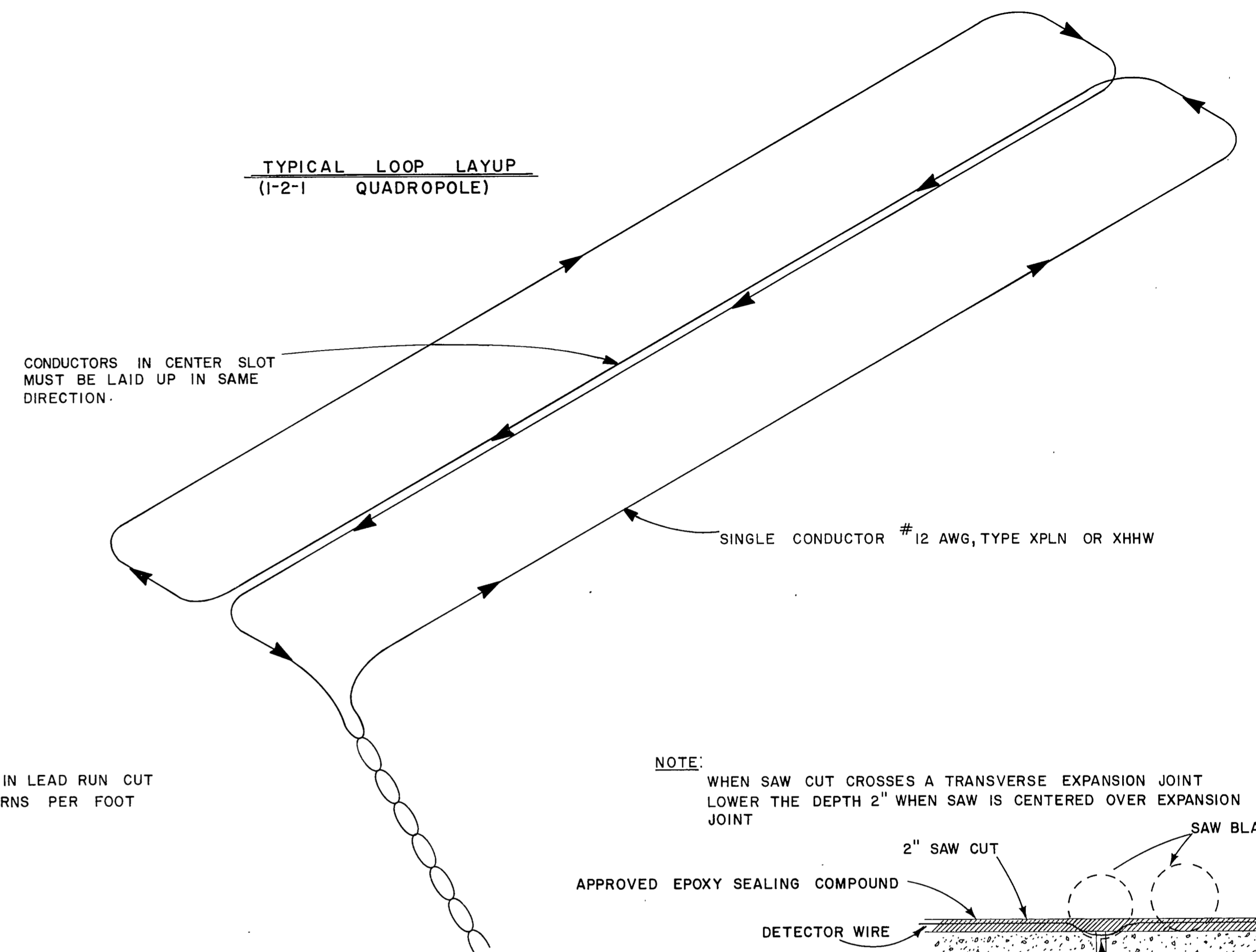


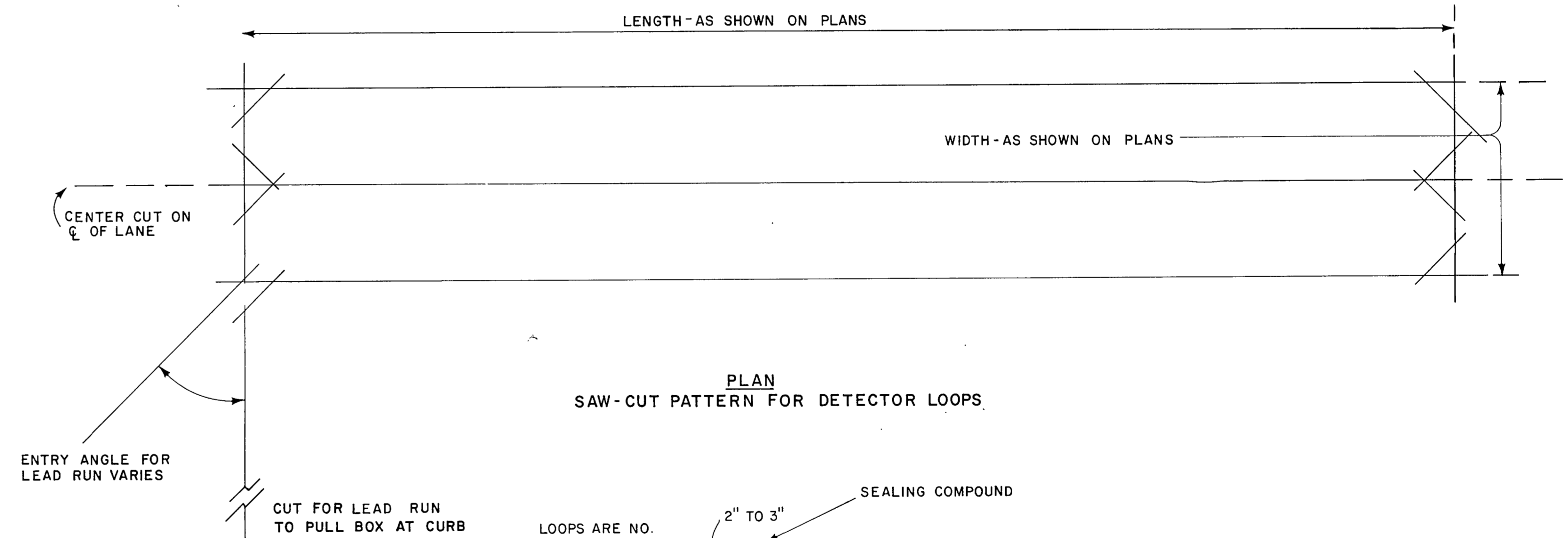
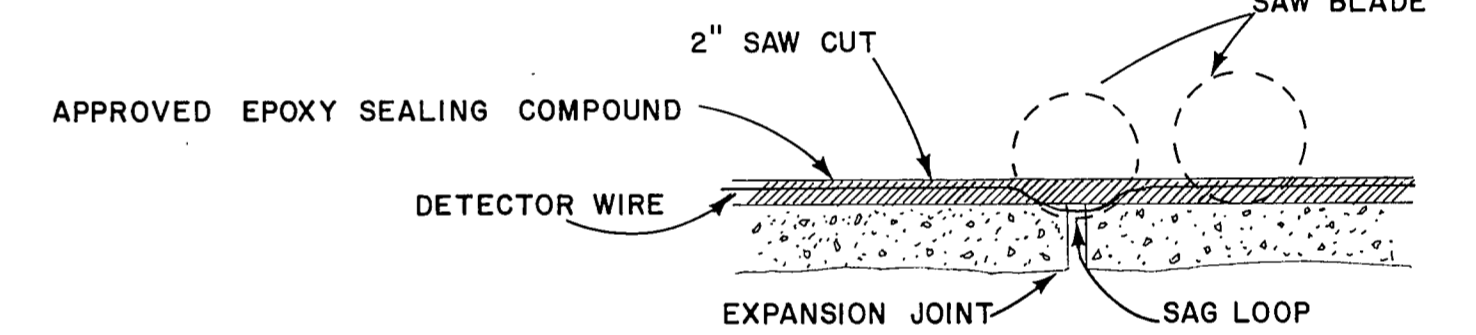
CONTROLLER CABINET & FOUNDATION

TYPICAL LOOP LAYUP  
(1-2-1 QUADROPOLE)



WIRES TWISTED IN LEAD RUN CUT AT LEAST, 2 TURNS PER FOOT

NOTE: WHEN SAW CUT CROSSES A TRANSVERSE EXPANSION JOINT LOWER THE DEPTH 2" WHEN SAW IS CENTERED OVER EXPANSION JOINT



PLAN  
SAW-CUT PATTERN FOR DETECTOR LOOPS

LOOPS ARE NO. 12 AWG, TYPE XHHW OR XPLN, STRANDED SINGLE CONDUCTOR WIRE.  
SECTION THROUGH CUT - WIRES INSTALLED  
SEALING COMPOUND  
2" TO 3"

NOT TO SCALE

1. INSTALLATION OF WIRE LOOPS IS TO BE MADE IN THE SHORTEST TIME PRACTICAL, NOT TO EXCEED A 4 HR MAX. AND SCHEDULED DURING OFF PEAK HOURS TO MINIMIZE DELAY TO VEHICLE TRAFFIC.
2. THE PAVEMENT CUT IS TO BE CUT WITH A CONCRETE SAW TO NEAT LINES AND LOOSE MATERIAL REMOVED. THE CUT SHOULD BE CLEAN AND DRY WHEN THE SEALING COMPOUND IS PLACED.
3. THE LEAD-IN WIRES ARE TO BE TWISTED A MINIMUM OF TWO TURNS PER FOOT AND REMAIN UNDISTURBED AFTER THE LOOP HAS BEEN TUNED.
4. EACH LOOP IS TO BE RETURNED TO CONTROLLER VIA ONE PAIR OF UNSPLICED SHIELDED LEAD-IN WIRES. MULTIPLE, TWISTED LEADS TO MORE THAN ONE LOOP IN SINGLE LEAD RUN SAW SLOT ARE PERMISSIBLE. HOWEVER, DEPTH OF SUCH SLOTS MUST BE INCREASED TO PROVIDE A MINIMUM COVER THICKNESS FOR EPOXY SEALANT OF 1/2 INCHES.

CITY OF ADDISON			
TRAFFIC SIGNAL INSTALLATIONS BELT LINE ROAD			
DETAILS			
INDUCTION DETECTOR LOOPS POLE FOUNDATIONS - CONTROLLER CABINET & FOUNDATION			
GINN, INC.			
DESIGNED	DRAWN	DATE: JUNE, 1980	FILE
APPROVED	CHECKED	SCALE: NOT TO SCALE	SHEET: 12 OF 14