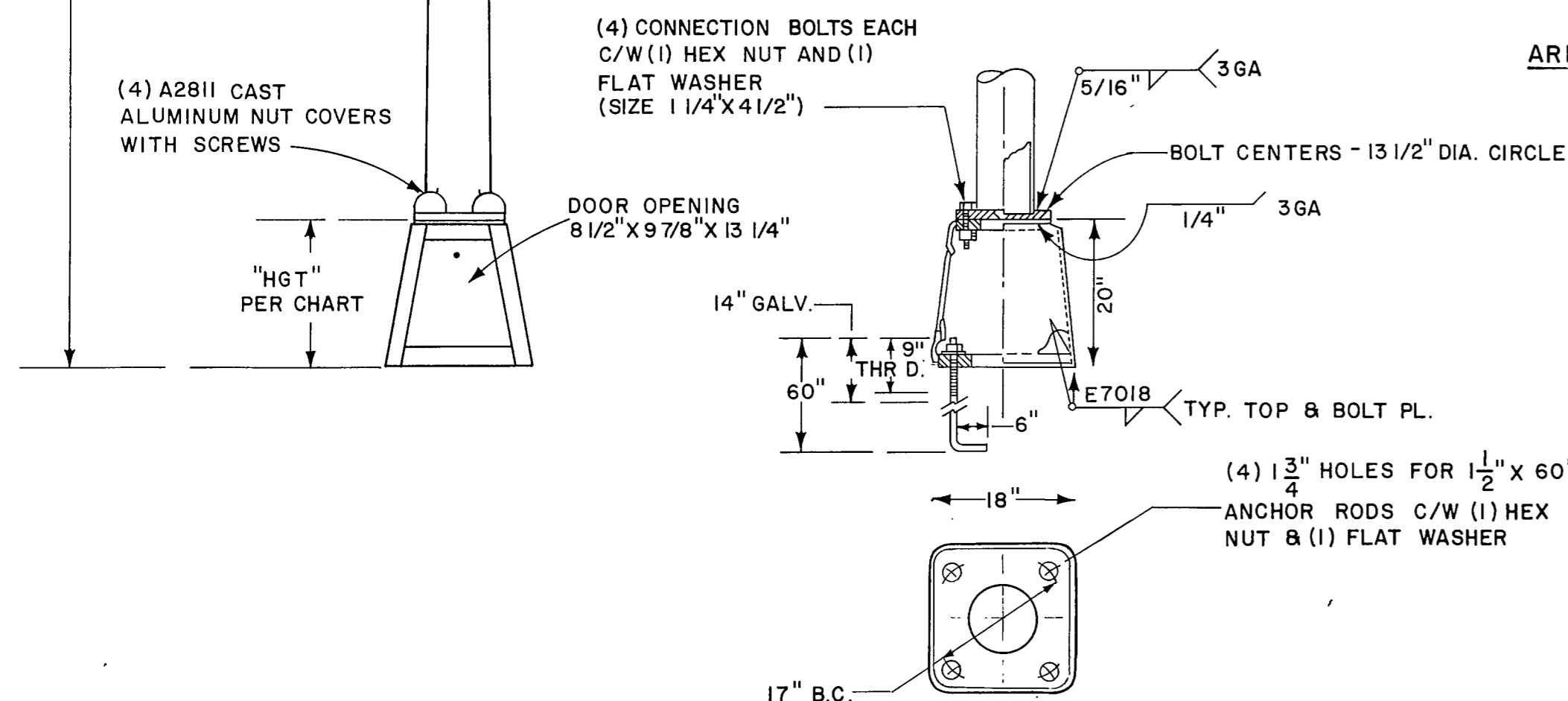
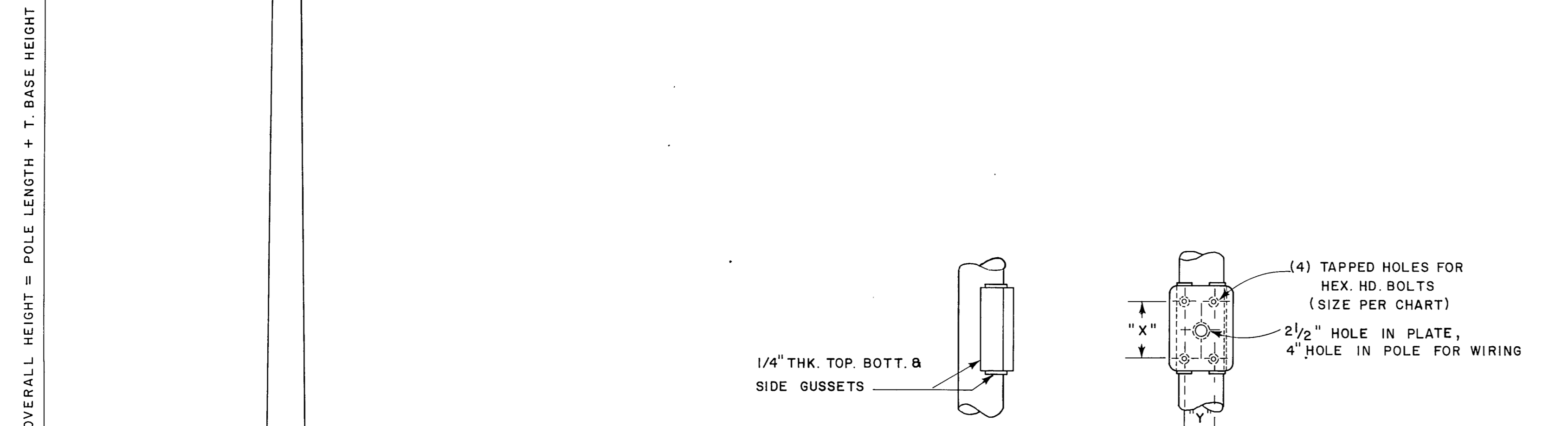
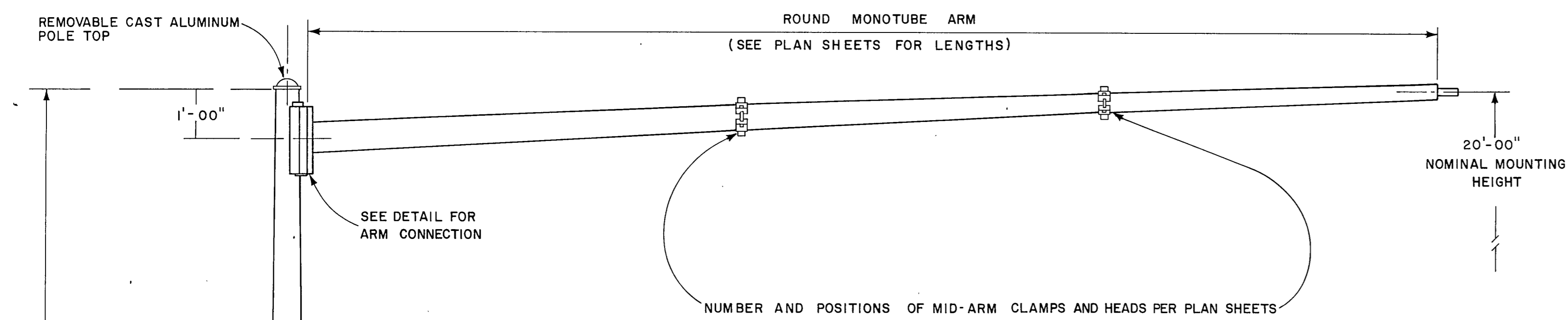


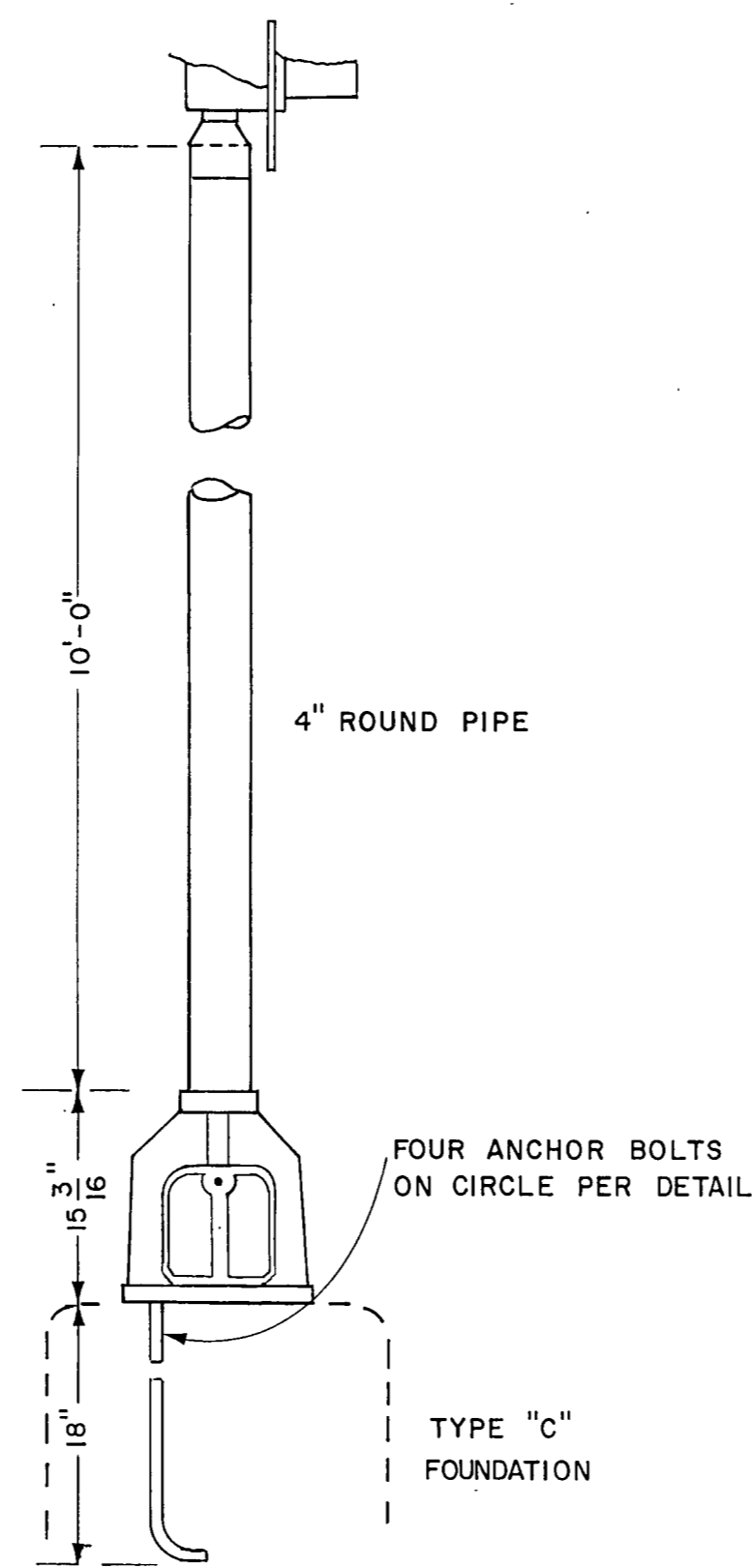
SIGNAL PEDESTAL AND MAST ARM POLE SCHEDULE



MAST ARM POLES AND MAST ARMS TO BE DESIGNED TO WITHSTAND DEAD LOADS AND THEORETICAL DYNAMIC LOADS DEVELOPED BY 80 MILE PER HOUR WINDS, BASED ON TOTAL WEIGHT AND SQUARE FOOTAGE AREA OF TRAFFIC SIGNAL HEADS AND BACK PLATES SPECIFIED FOR RESPECTIVE ASSEMBLIES. SEE POLE SCHEDULE IN UPPER RIGHT-HAND CORNER FOR HEAD ARRAYS ON EACH MAST ARM POLE ASSEMBLY AND SUGGESTED DESIGNS.

ALL SIGNAL MAST ARMS AND POLES SHALL HAVE PAINTED FINISH. THE CONTRACTOR SHALL SUBMIT THE TYPE AND COLOR SELECTION TO THE ENGINEER FOR APPROVAL (THE CITY PREFERENCE IS A BRONZE OR BROWN COLOR.)

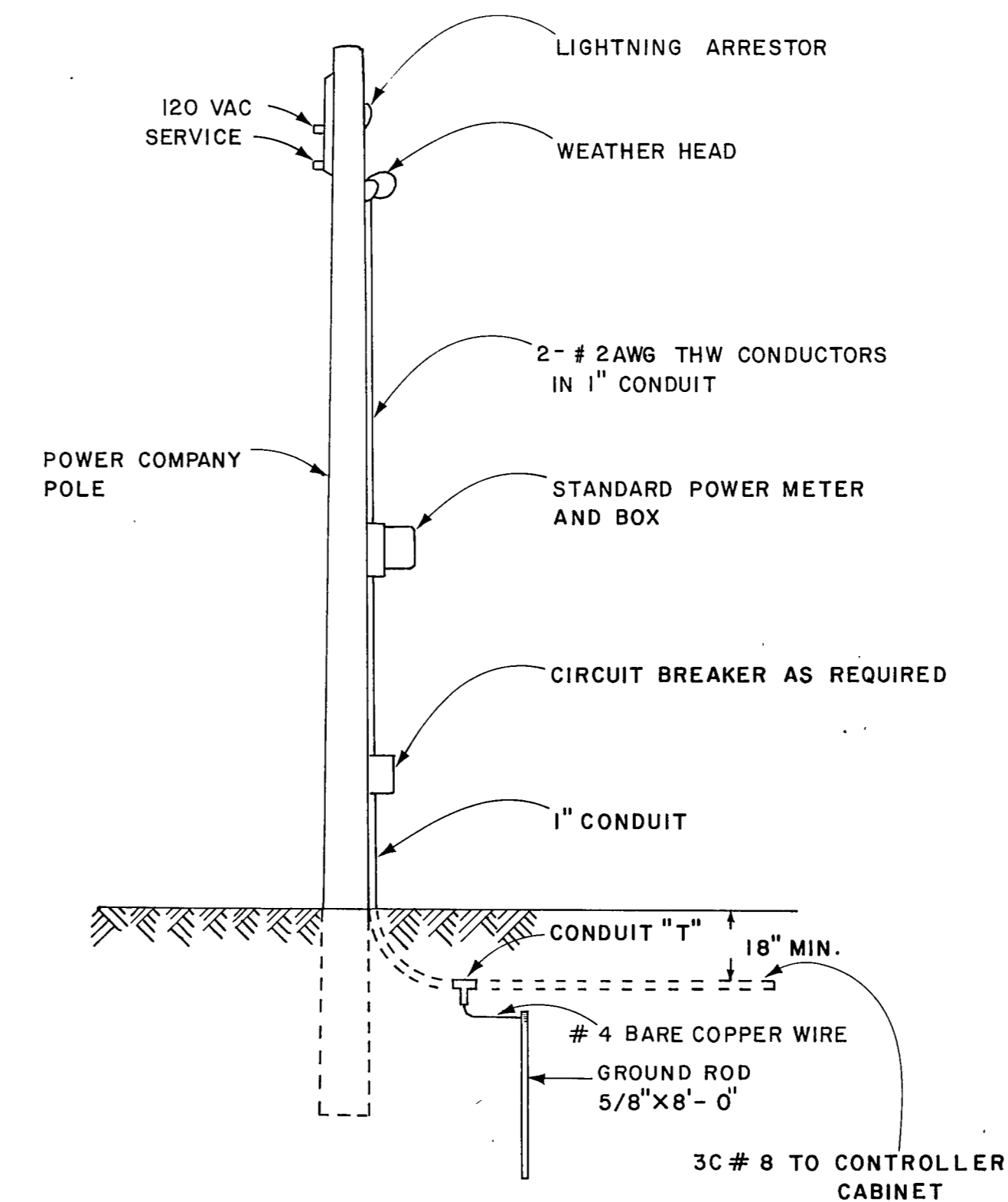
MAST ARM POLES AND TRANSFORMER BASES



SIGNAL PEDESTAL POLE

UNIT DESCRIPTION	SIGNAL HEAD, ARRAY	SUGGESTED POLE DESIGN	NUMBER OF UNITS BY LOCATION							TOTALS
			MIDWAY - BELTWAY	SURVEYOR	MIDWAY	FIRE STATION MUNI.-BLDG.	BELTWAY	ADDISON INWOOD	QUORUM MARCY	
SIGNAL PEDESTAL W/3 SECTION OR 2 PED. SIGNAL HEAD SIGNAL	(SEE DETAIL SHEET)	UA 240	1	—	—	—	1	—	1	3
SIGNAL PEDESTAL W/5 SECTION SIGNAL HEAD	(SEE DETAIL SHEET)	U 240	2	2	4	—	2	—	2	12
MAST ARM POLE ASSY. 15' MAST ARM W/2 - 5 SECTION SIGNAL HEADS		50700 Y161	—	—	—	—	—	2	—	2
MAST ARM POLE ASSY. 20' MAST ARM W/2 - 3 SECTION SIGNAL HEADS		50700 Y163	2	—	—	—	1	—	—	3
MAST ARM POLE ASSY. 25' MAST ARM W/2 - 3 SECTION SIGNAL HEADS		50700 Y166	—	1	—	—	—	—	2	3
MAST ARM POLE ASSY. 30' MAST ARM W/2 - 3 SECTION SIGNAL HEADS		50700 Y168	—	1	—	—	—	—	—	1
MAST ARM POLE ASSY. 30' MAST ARM W/3 - 3 SECTION SIGNAL HEADS		50700 Y168	2	1	2	—	2	—	2	9
MAST ARM POLE ASSY. 35' MAST ARM W/3 - 3 SECTION SIGNAL HEADS		50700 Y171	—	1	2	—	—	2	—	5
MAST ARM POLE ASSY. 35' MAST ARM W/3 MAST ARM MTD. 3 - SECTION HEADS		50700 Y171	—	—	—	1	—	—	—	1
MAST ARM POLE ASSY. 35' MAST ARM W/2 - 3 SEC. & 1 - 5 SEC. SIGNAL HEAD		50700 Y171	—	—	—	—	—	2	—	2
MAST ARM POLE ASSY. 25' & 35' MAST ARMS. W/5 - 3 SECTION SIGNAL HEADS		50700 SPECIAL	—	—	—	1	—	—	—	1

* SUGGESTED POLE DESIGN # S FOR PEDESTALS ARE EAGLE SIGNAL CORP. PART NUMBERS. SUGGESTED POLE DESIGN # S FOR MAST ARM POLES ARE FROM UNION METAL MFG CO., SERIES 50700. REFER TO SPECIFICATION "MA-POL" FOR REQUIREMENTS FOR SUBMITTAL OF DESIGN DRAWINGS FOR ALL POLES, BY CONTRACTOR, AFTER AWARD OF CONTRACT.



POWER SOURCE DETAILS

THE CONTRACTOR SHALL MOUNT EQUIPMENT ON POLES AS DIRECTED BY THE POWER COMPANY.

CITY OF ADDISON

TRAFFIC SIGNAL INSTALLATIONS
BELT LINE ROAD

DETAILS

SIGNAL MAST ARMS AND POLES
PEDESTAL POLES AND POWER SUPPLY

GINN, INC.

DESIGNED	DRAWN	DATE: JUNE, 1980	FILE
APPROVED	CHECKED	SCALE: NOT TO SCALE	SHEET: 13 OF 14