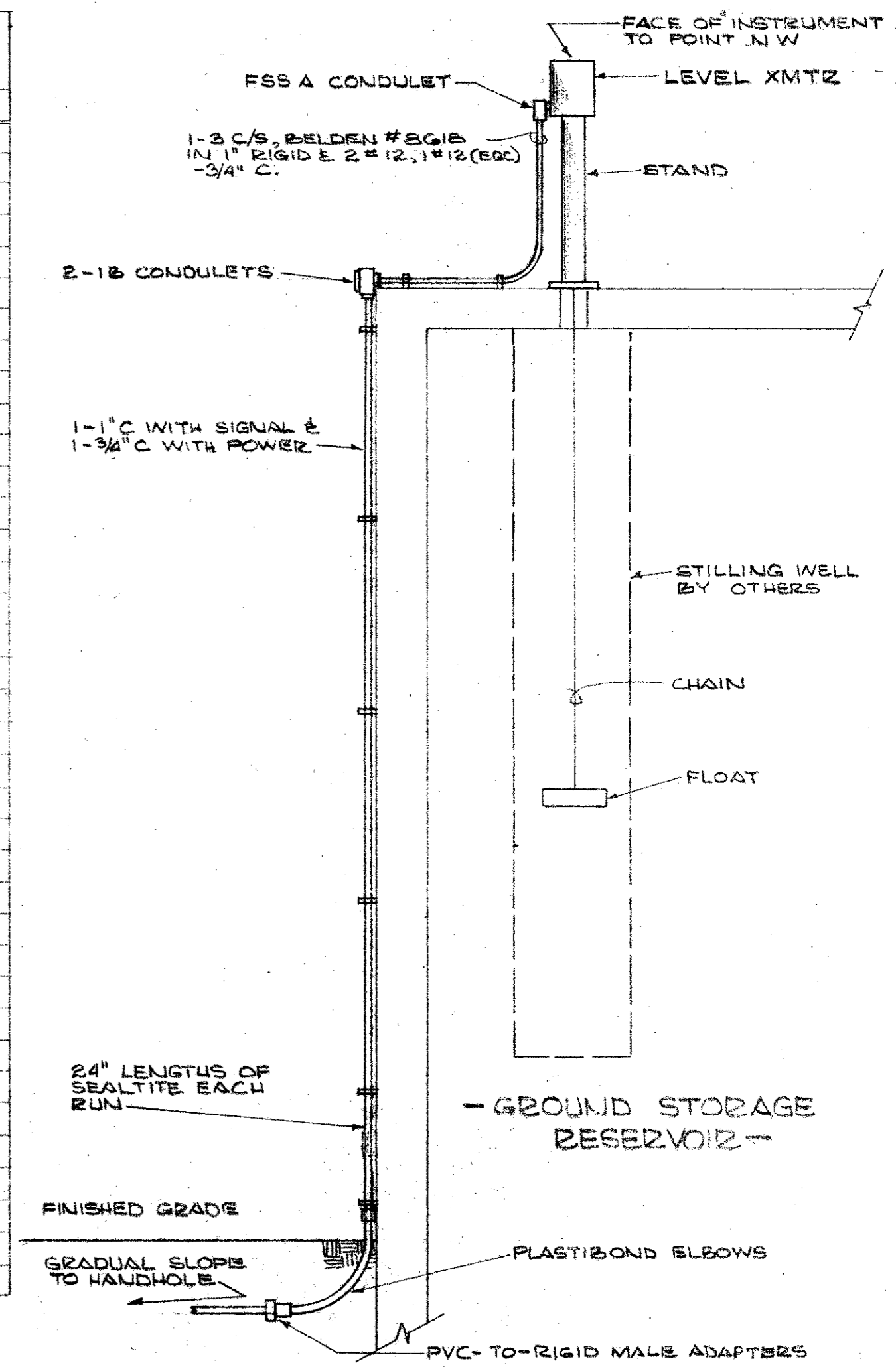


LEGEND

SYMBOL	DESCRIPTION
—+—	ELECTRICAL CONDUIT WITH NEUTRAL, HOT OR SWITCH, EGC
□	FLUORESCENT LIGHT FIXTURE
○	INCANDESCENT OR MERCURY VAPOR LIGHT FIXTURE
S	SINGLE POLE SWITCH
SM	MANUAL MOTOR STARTER
S3	THREE WAY SWITCH
---	UNDERGROUND CONDUIT RUN
▶	TELEPHONE OUTLET
⊙	JUNCTION BOX
⊕	DUPLEX RECEPTACLE
⊖	TRANSFORMER
WP	WEATHERPROOF
⊗	CONTACTOR
⊗	MOTOR CONTROLLER
⊗	MOTOR
⊗	DISCONNECT SWITCH
MCP	MOTOR CIRCUIT PROTECTOR
EGC	EQUIPMENT GROUND CONDUCTOR
LS	LIMIT SWITCH
SE	STOP/START PUSHBUTTON
RPD	REMOTE PILOT DEVICE
HOA	HAND-OFF-AUTOMATIC SELECTOR SWITCH
V	VOLTMETER
VS	VOLTMETER PHASE SELECTOR SWITCH
A	AMMETER
AS	AMMETER PHASE SELECTOR SWITCH
T	THERMOSTAT
FVNR	FULL VOLTAGE NON REVERSING
EC	EMPTY CONDUIT
ECV	ELECTRIC CHECK VALVE
GFI	GROUND FAULT INTERRUPTER
APF	ABOVE FINISHED FLOOR
Sp	SINGLE POLE SWITCH W/PILOT LIGHT
LPU	LIGHTNING PROTECTION UNIT
BFP	BLOWN FUSE PROTECTION
— —	LIGHTNING ARRESTER
— —	SURGE CAPACITOR

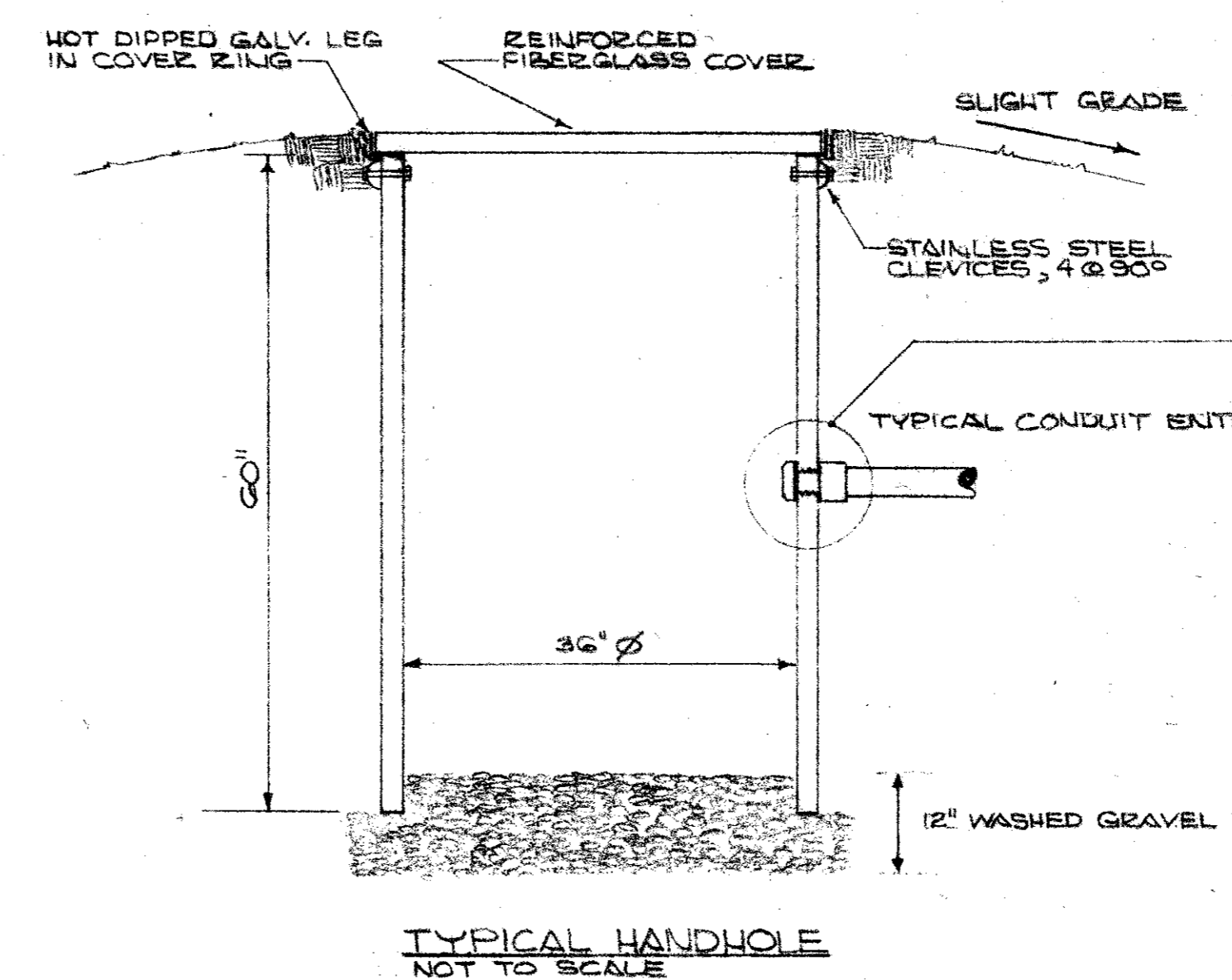
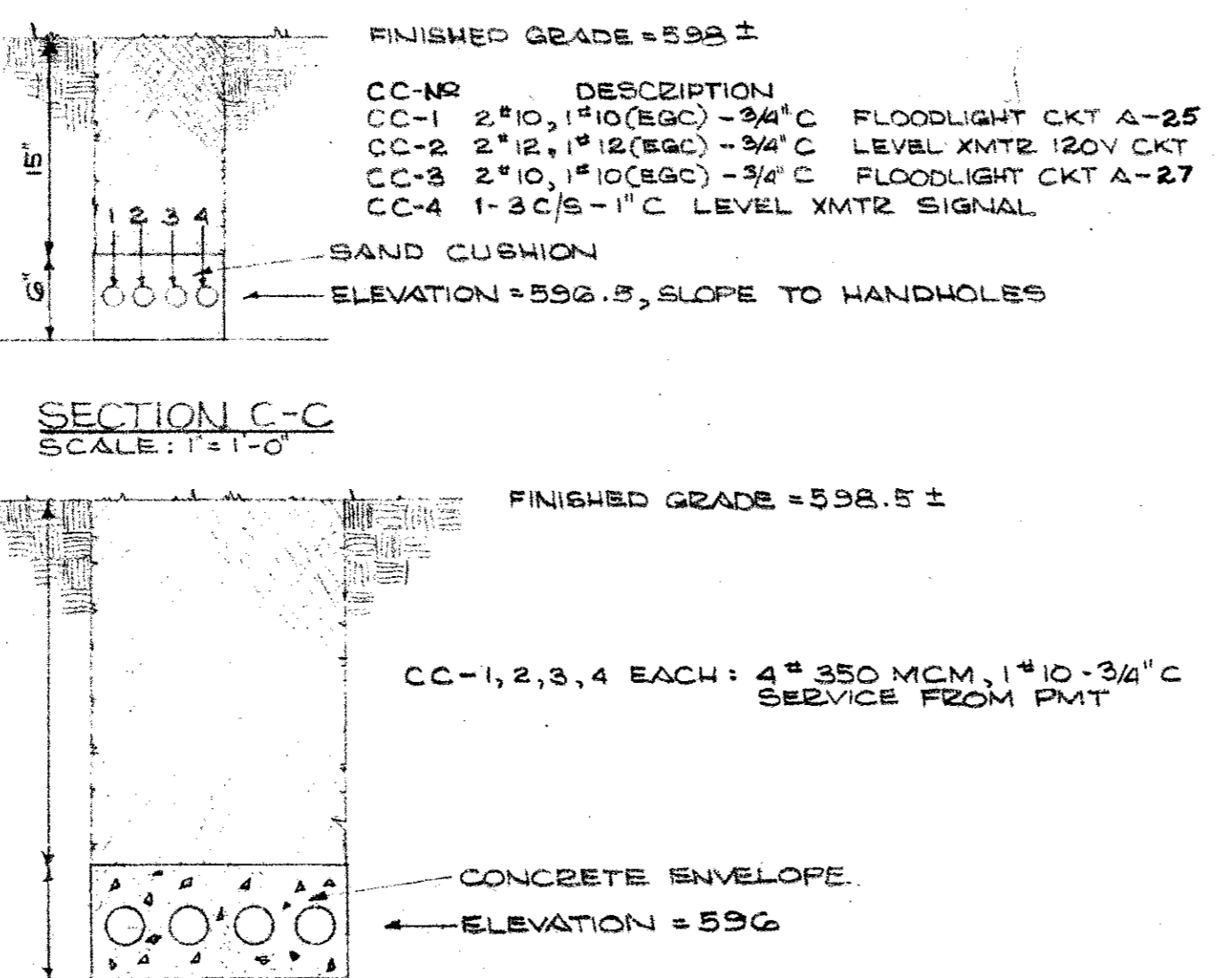
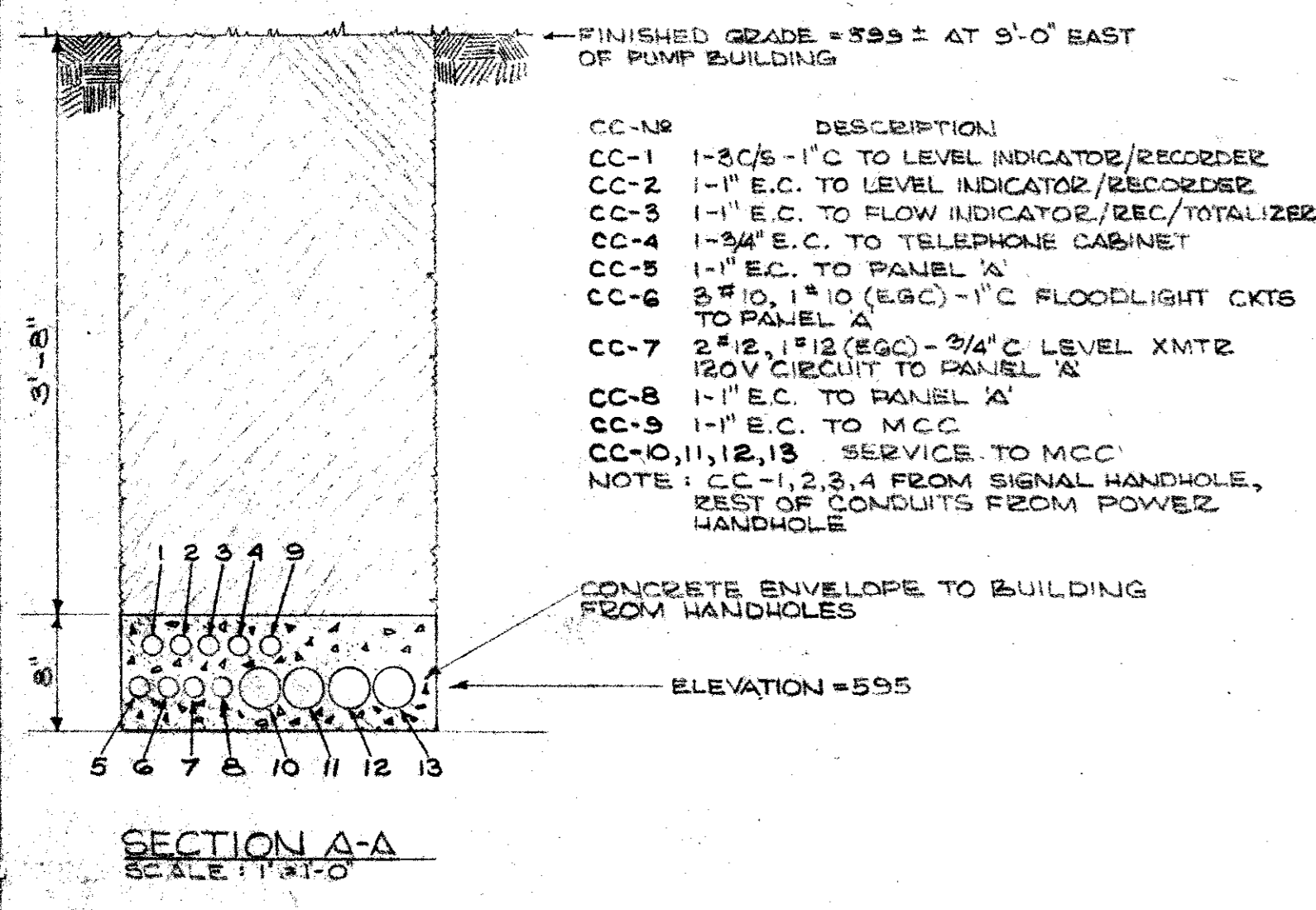


LEVEL TRANSMITTER INSTALLATION DETAIL
SCALE: 3/8" = 1'-0"

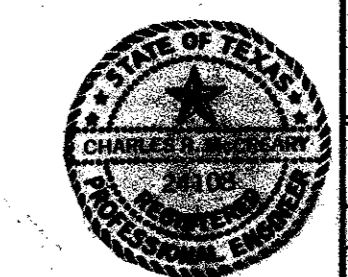
SITE PLAN

SCALE: 1" = 20'-0"

← NORTH



- NOTES:
- SERVICE CABLES SHALL BYPASS POWER HANDHOLE
 - LABEL EACH SET OF WIRES IN EACH HANDHOLE WITH THEIR FUNCTION WRITTEN ON T & B WATER PROOF LABEL USE WP INK
 - SLOPE CONDUITS WITH GRADUAL, UNIFORM GRADE TO HANDHOLE



CITY OF ADDISON
DALLAS COUNTY, TEXAS

WATER PUMP STATION
AND WATER MAINS

ELECTRICAL

GINN & STACY, INC.
CONSULTING ENGINEERS — DALLAS, TEXAS

DESIGNED BY: CPM SCALE: AS NOTED SHEET 21 OF 24
DRAWN BY: WJC DATE: _____