

MATCH LINE STA. 55+00
(SEE SH. 8 89)

MATCH LINE STA. 3+70
(SEE SH. 8)

MATCH LINE STA. 14+15
END THIS CONTRACT

NOTE: Water Line is at a Depth of 5'

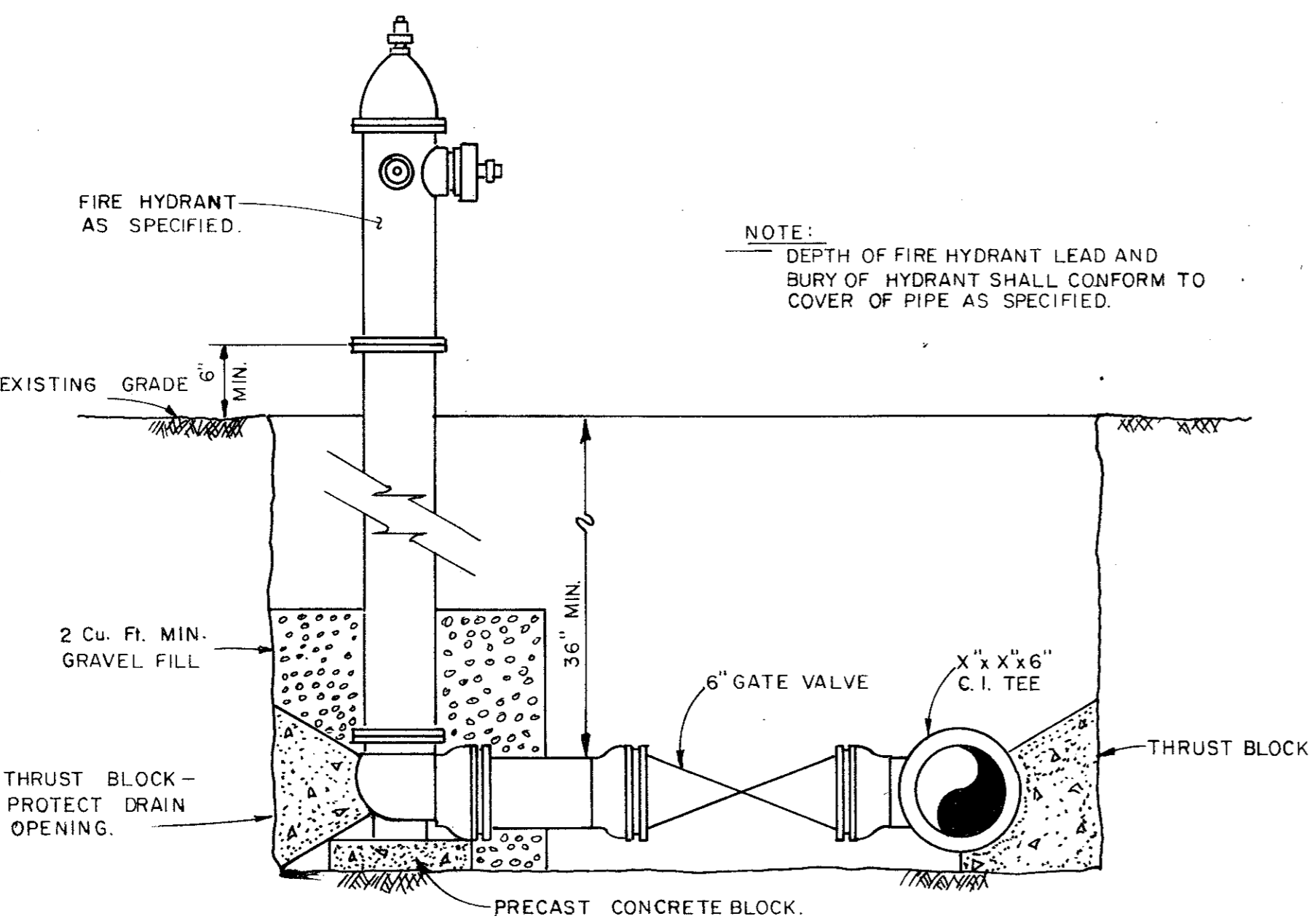
S
16

AIR RELEASE VALVE
STA. 11+57

STA. 9+87
EXIST. 4" SEWER LINE

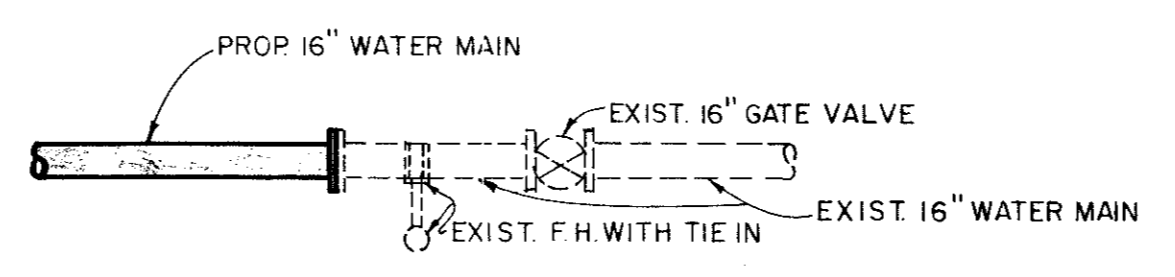
2" SERVICE TO
SUNDOWN
10+47

KELLER SPRINGS ROAD



TYPICAL FIRE HYDRANT DETAIL
NO SCALE

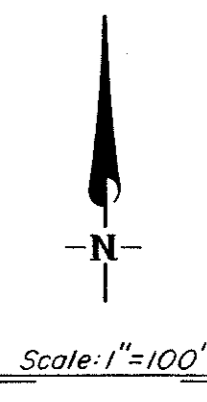
NOTE:
DEPTH OF FIRE HYDRANT LEAD AND
BURY OF HYDRANT SHALL CONFORM TO
COVER OF PIPE AS SPECIFIED.



DETAIL "I"
N. T. S.

LEGEND

□	Hub & Tack
○	CORP Monument
◆	Power Pole
○	Water Meter
○	Water Valve
○	Water Hydrant
○	Fire Hydrant
○	Gas Meter
○	Telephone Box
○	Guy Wire
○	Iron Pin
○	Mail Box
○	Water Line
○	Gas Line
○	Underground Telephone



CITY OF ADDISON
DALLAS COUNTY, TEXAS
WATER IMPROVEMENTS

LINE "S"
STA. 3+70 TO STA. 14+15
END OF CONTRACT

GINN & STACY, INC.
CONSULTING ENGINEERS DALLAS, TEXAS

Designed By: J. O. S. Scale: As Shown
Drawn By: G. L. H. Date: 1977 Sheet 11 of 14