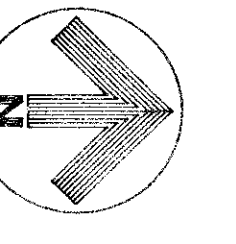




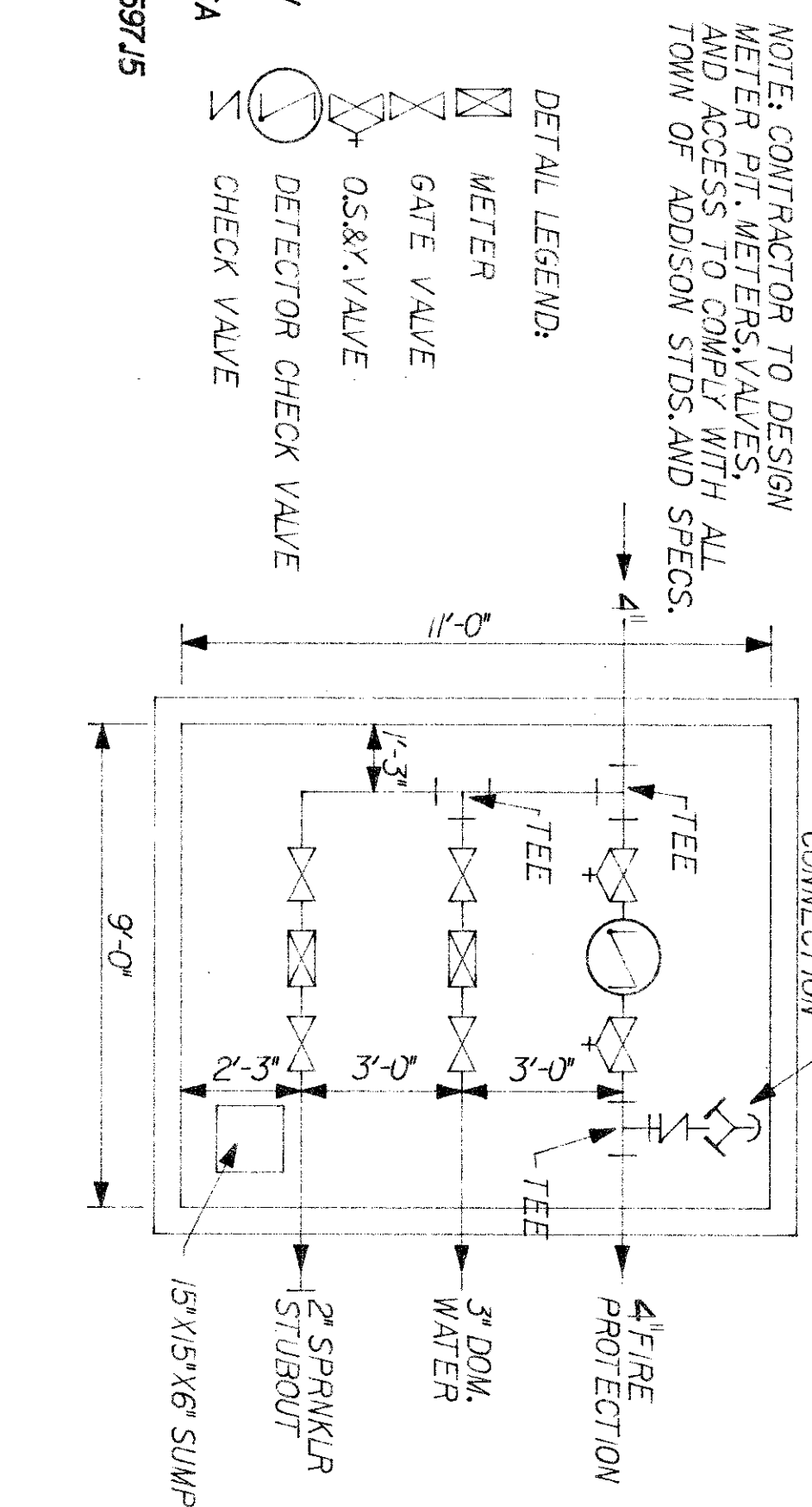
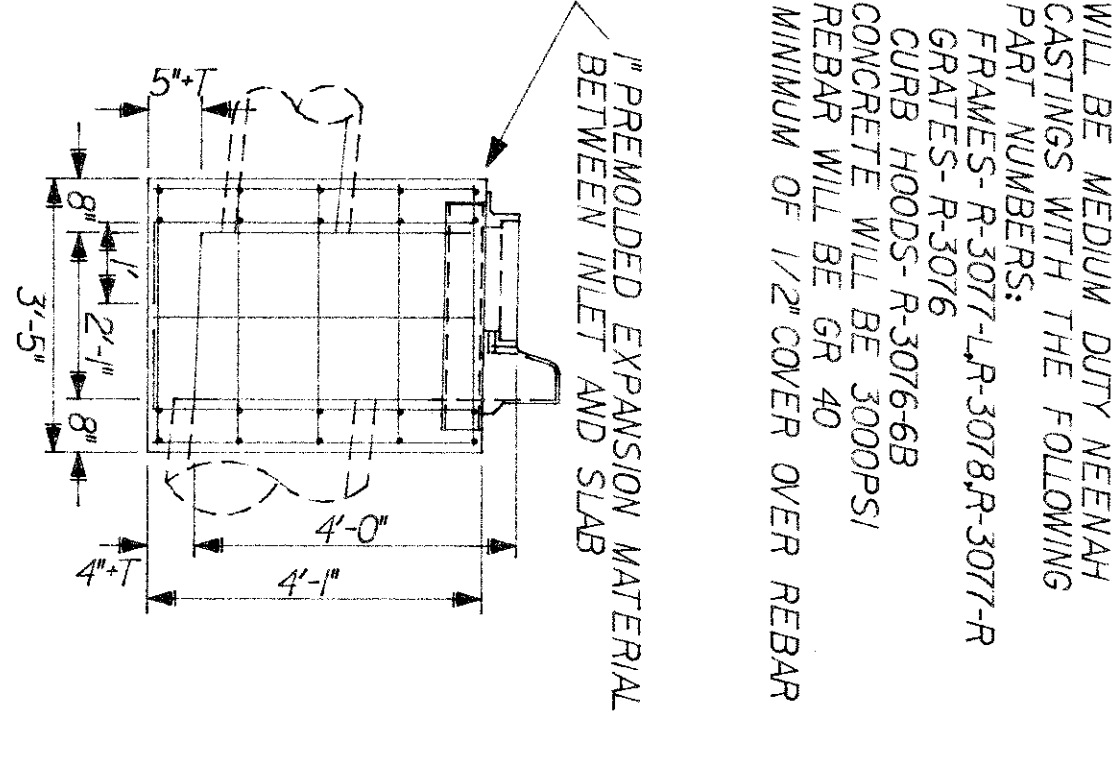
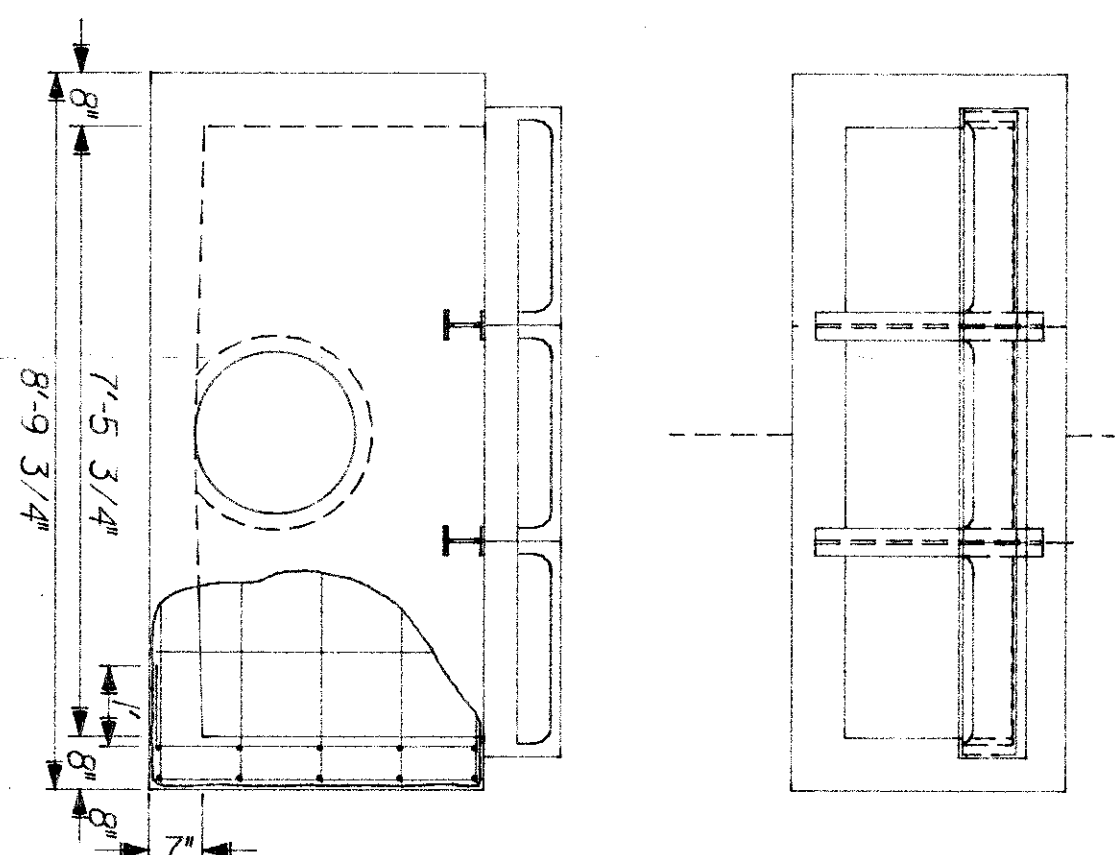
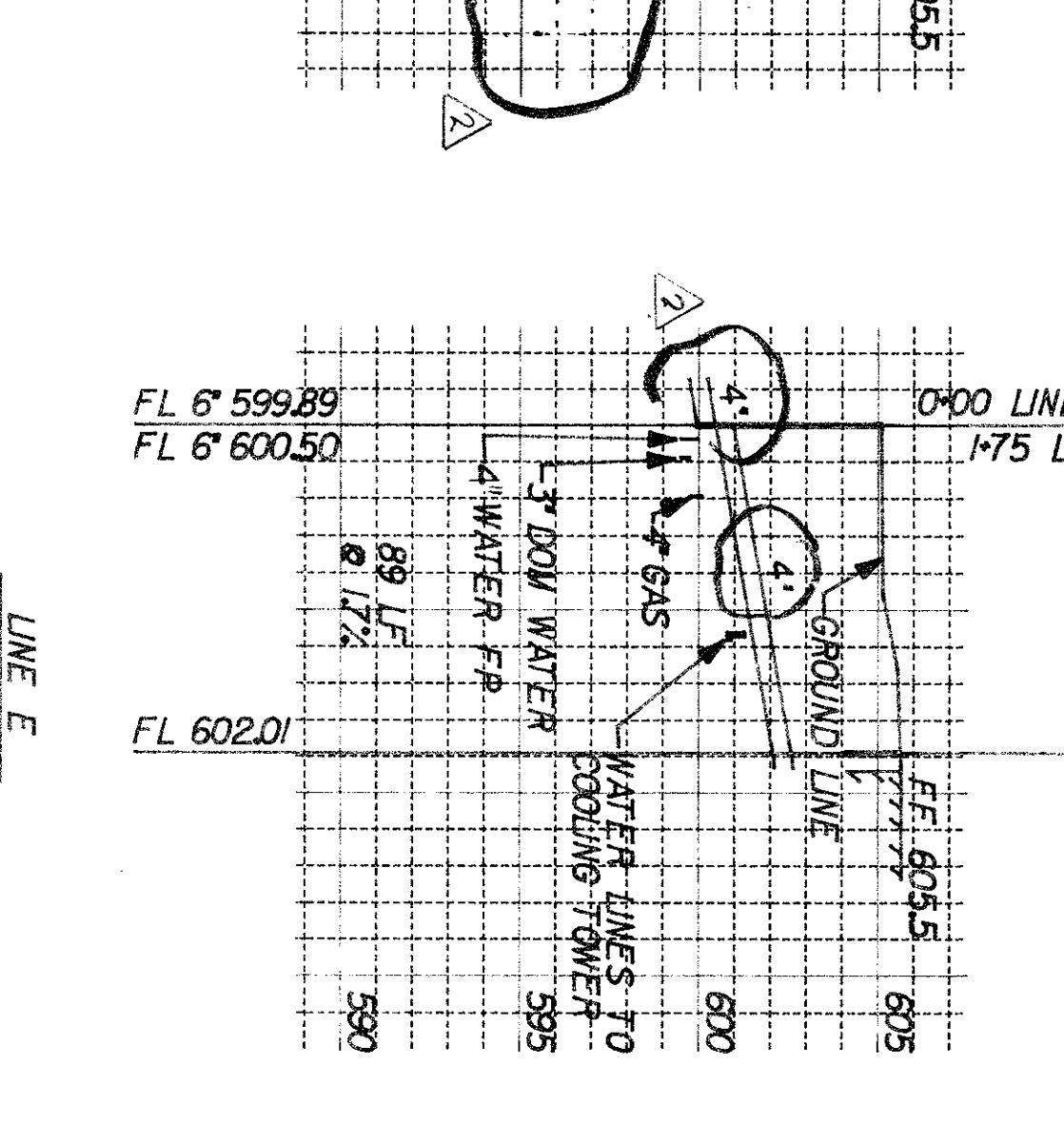
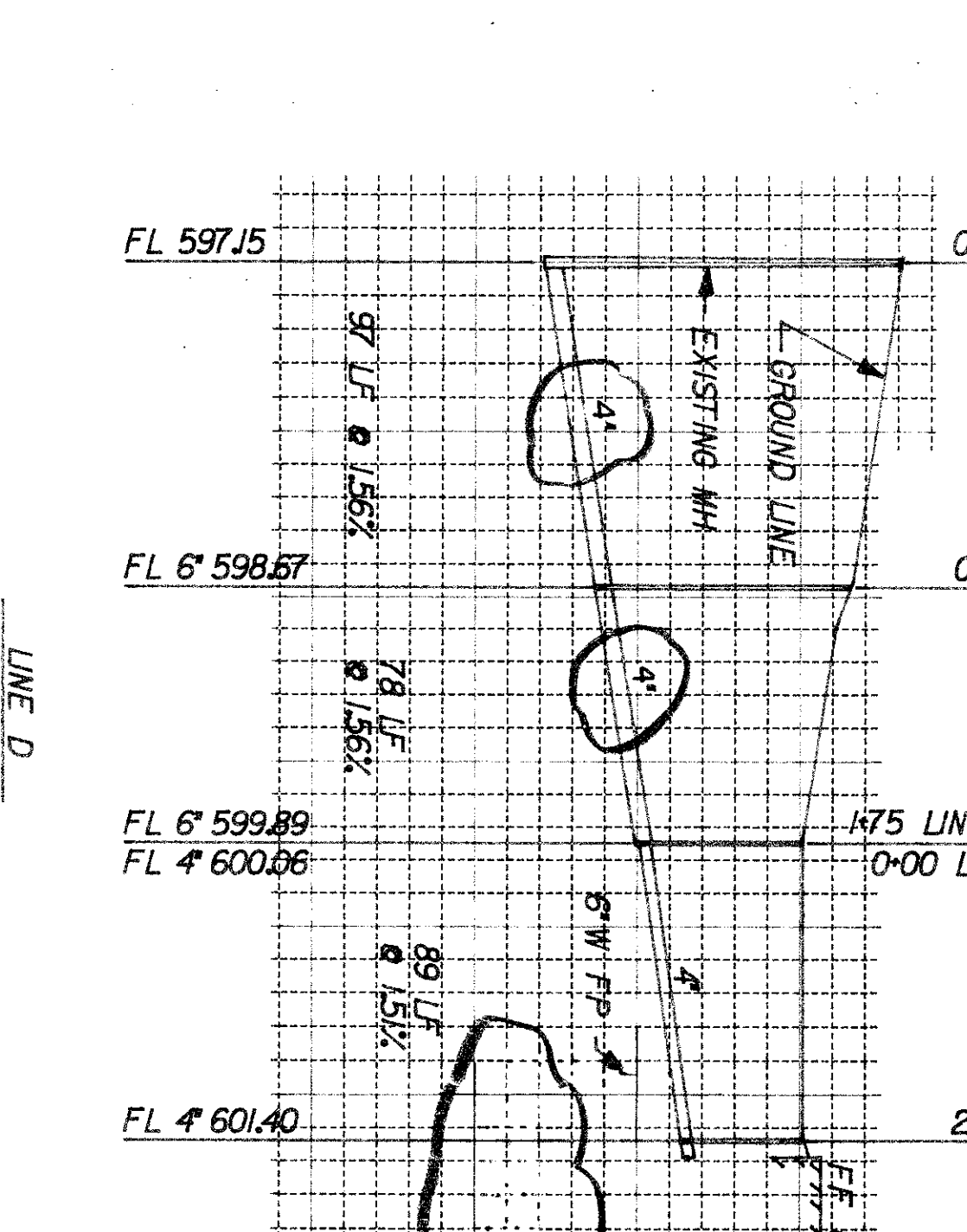
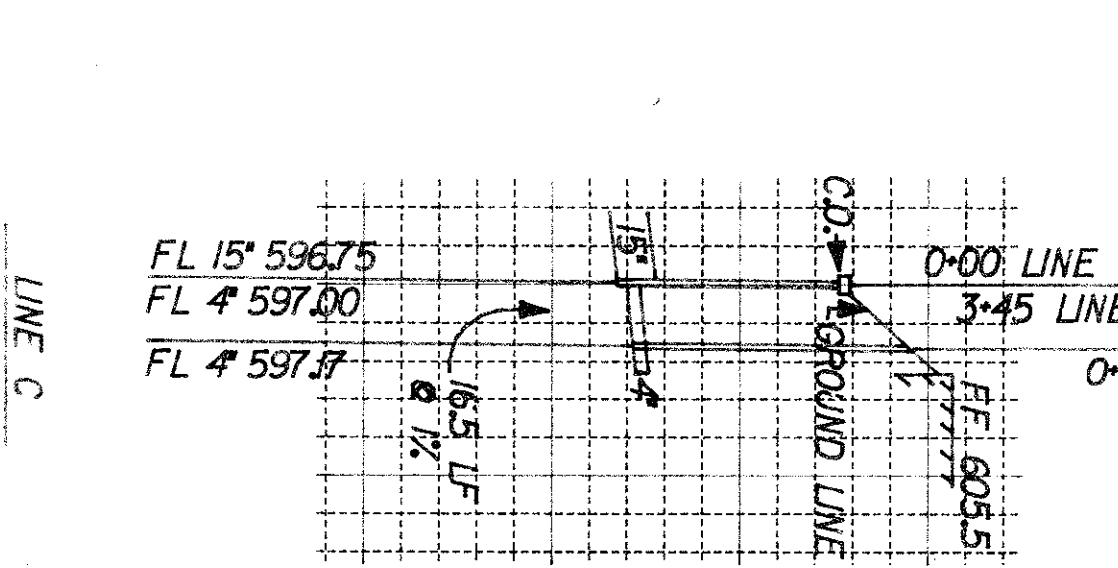
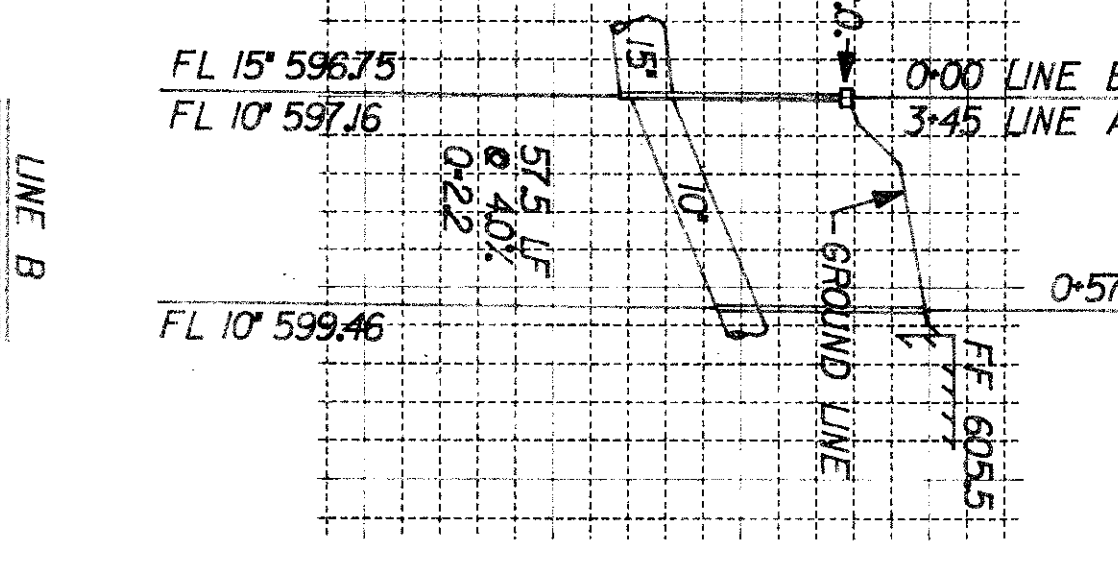
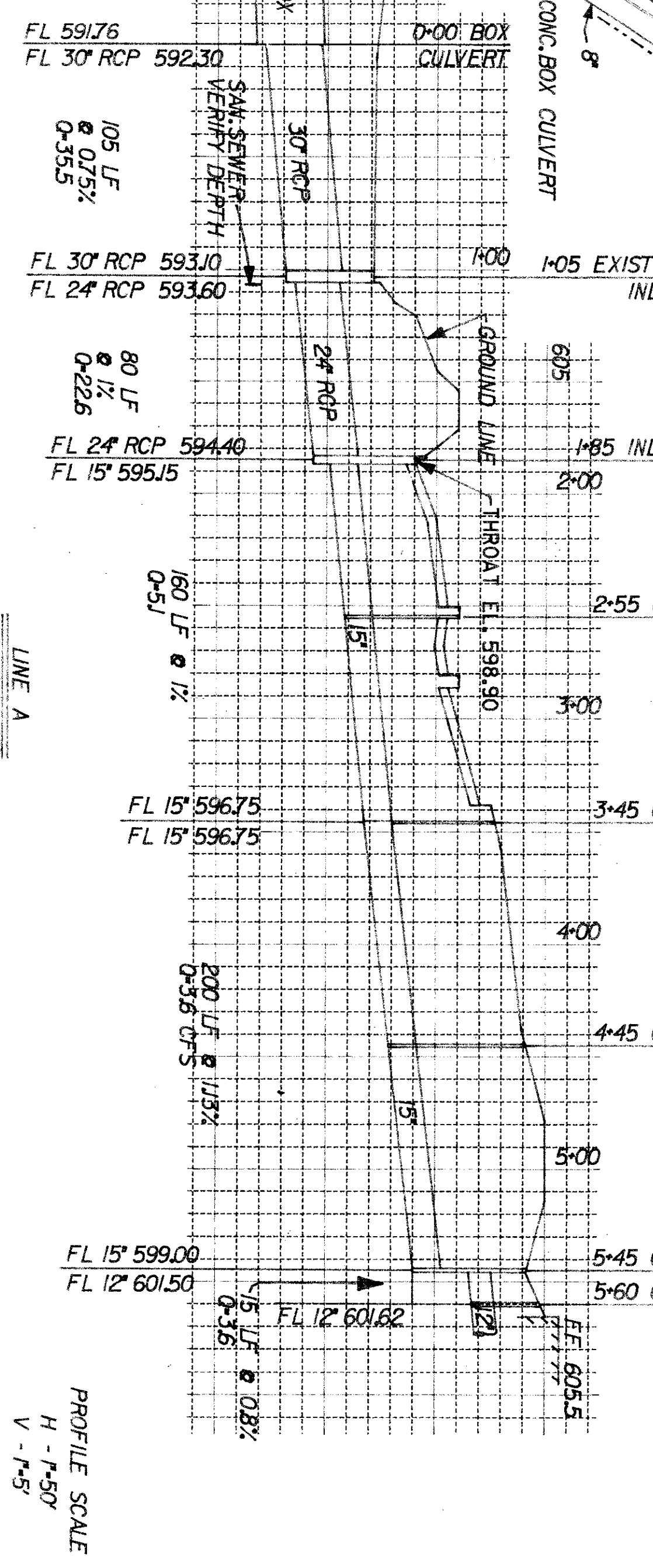
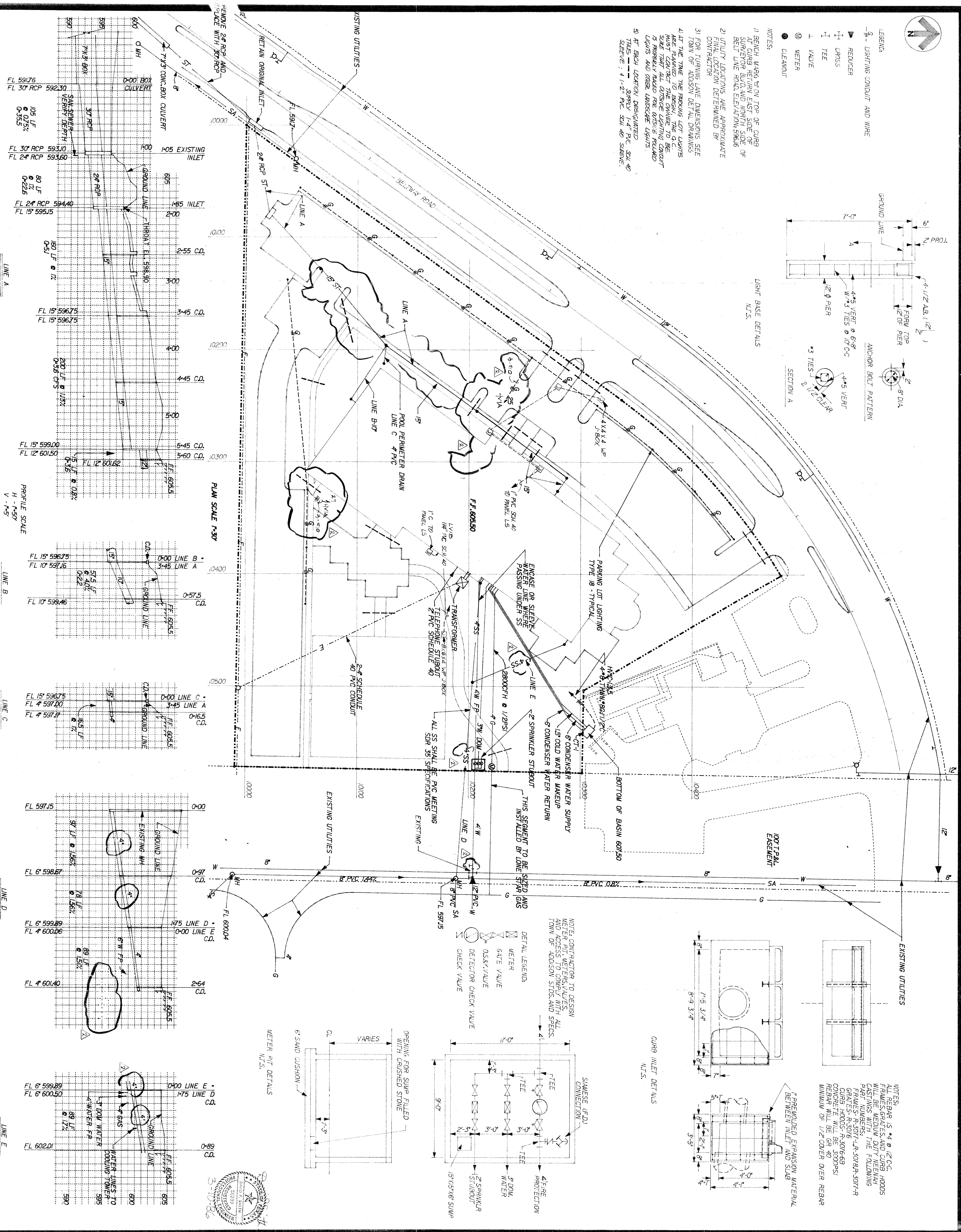
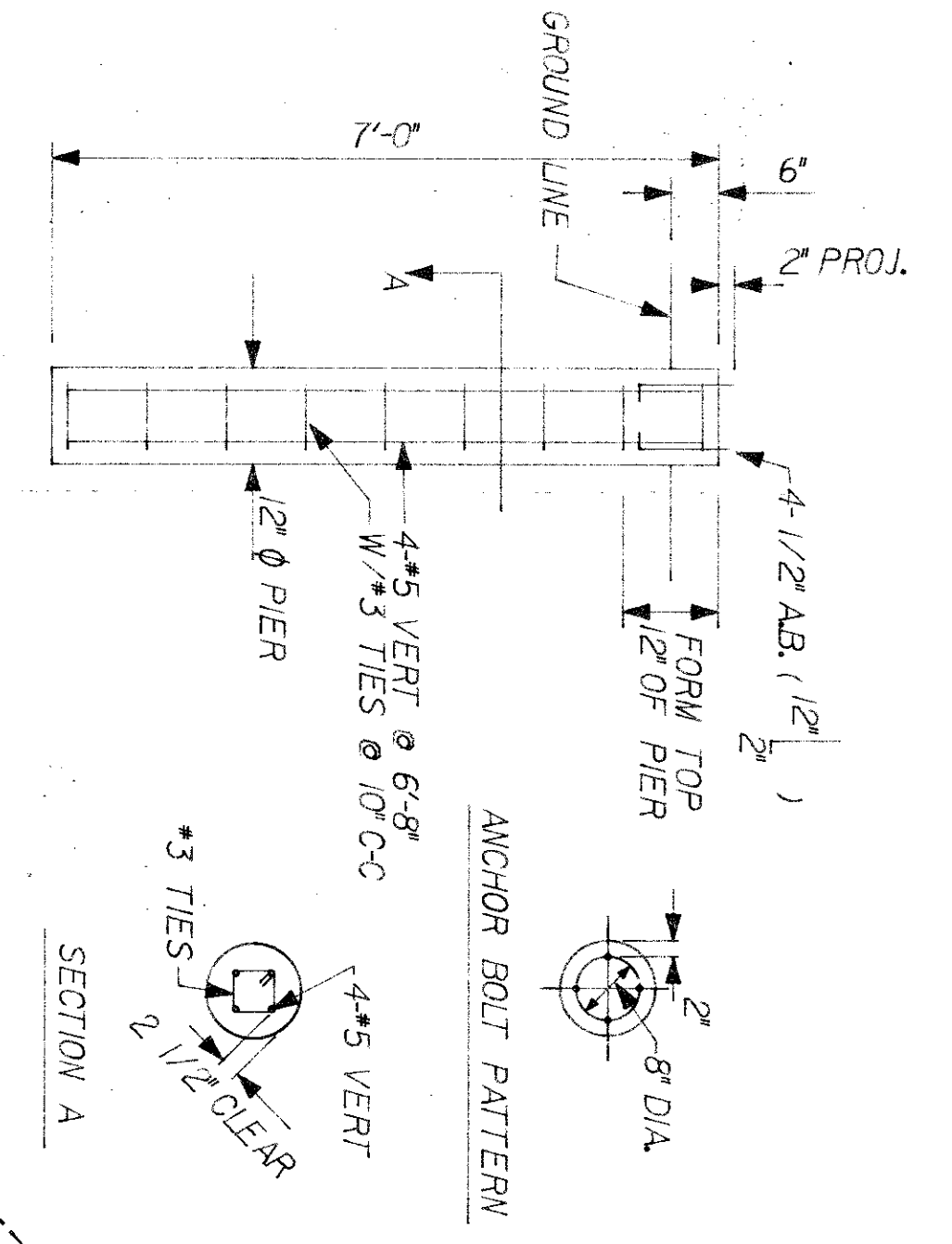


B4-3



- LEGEND:
- LIGHTING CONDUIT AND WIRE
  - ▲ REDUCER
  - ⊕ CROSS
  - ⊥ TEE
  - ⊥ VALVE
  - ⊕ METER
  - ⊕ CLEANOUT

- NOTES:
- 1) BENCH MARK ON TOP OF CURB AT CURB RETURN EAST SIDE OF SUPERIOR BLVD. AND NORTH SIDE OF BELTWAY ROAD. ELEVATION: 586.6
  - 2) UTILITY LOCATIONS ARE APPROXIMATE CONTRACTOR
  - 3) FOR TURNING LANE DIMENSIONS SEE TOWN OF ADDISON DETAIL DRAINAGE
  - 4) AT THE TIME THE PARKING LOT LIGHTS WERE INSTALLED THE CONTRACTOR WAS NOT ADVISED THAT THE LIGHTING CONDUIT IS PROPERLY BASED FOR OUTSIDE PULLBOX LIGHTS AND OTHER LANDSCAPE LIGHTS.
  - 5) AT EACH LOCATION DESIGNATED THIS IS A 1-1/2" PVC SCH. 40 SLEEVE, 1-1/2" PVC SCH. 40 SLEEVE.



NOTES:

- ALL REBAR IS #4 @ 12" O.C.
- FRAMES, GRATES, AND CURB HOODS CASTING SHALL BE 15' x 15' FORMING PART NUMBER: R-307-LR-307RR-307-R
- FRAMES: R-307-LR-307RR-307-R
- GRATES: R-307-LR-307RR-307-R
- CURB HOODS: R-307RR-307-R
- CONCRETE WILL BE 3000 PSI
- REBAR WILL BE #4 @ 12" O.C. MINIMUM OF 1/2" COVER OVER REBAR

**The Benham Group**  
Dallas

architects  
engineers  
planners  
1341 W. Mockingbird in  
suite 517 e  
dallas, texas

**ADDISON RECREATION CENTER**  
3900 BELTWAY DRIVE  
ADDISON, TEXAS

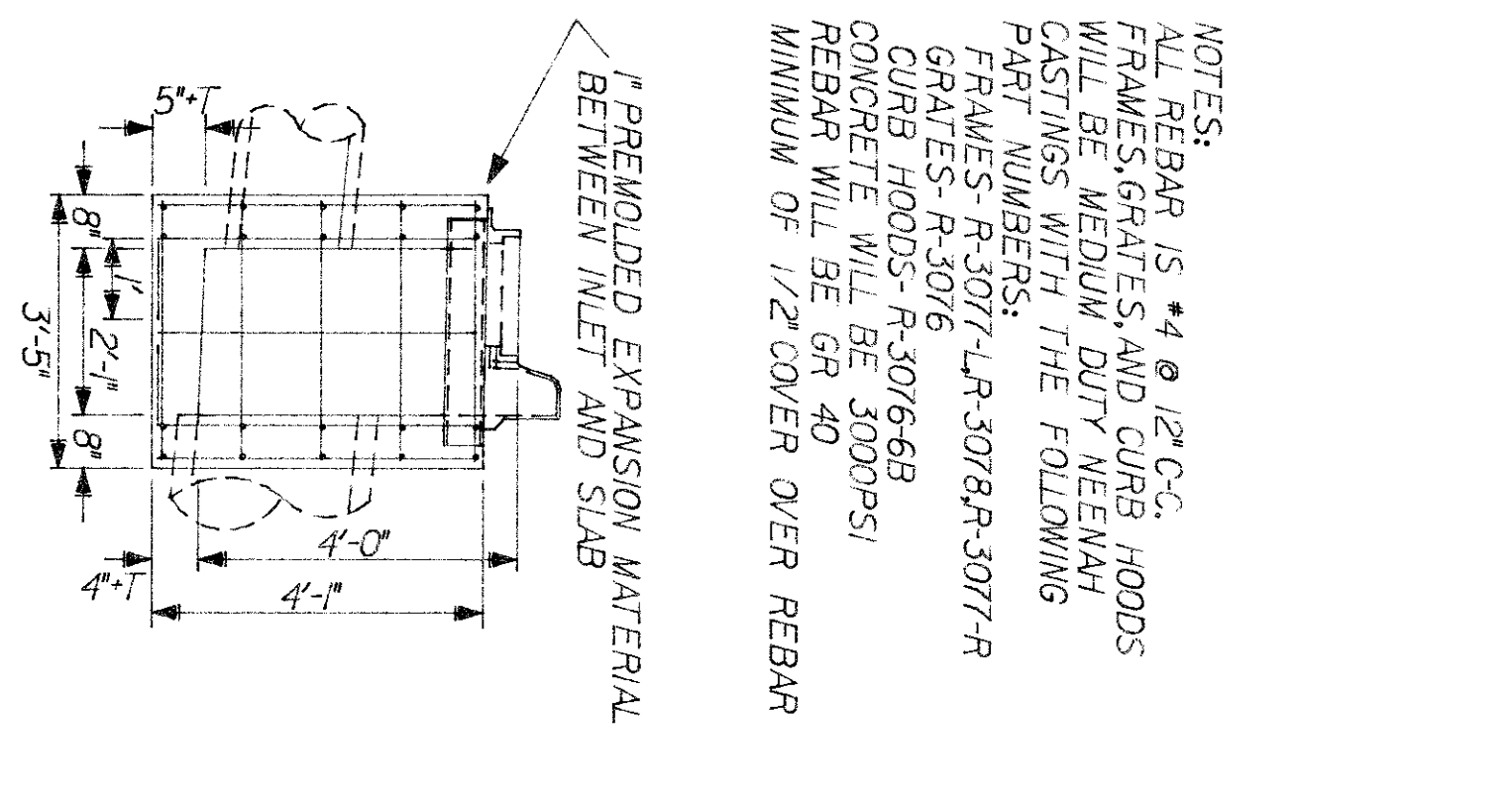
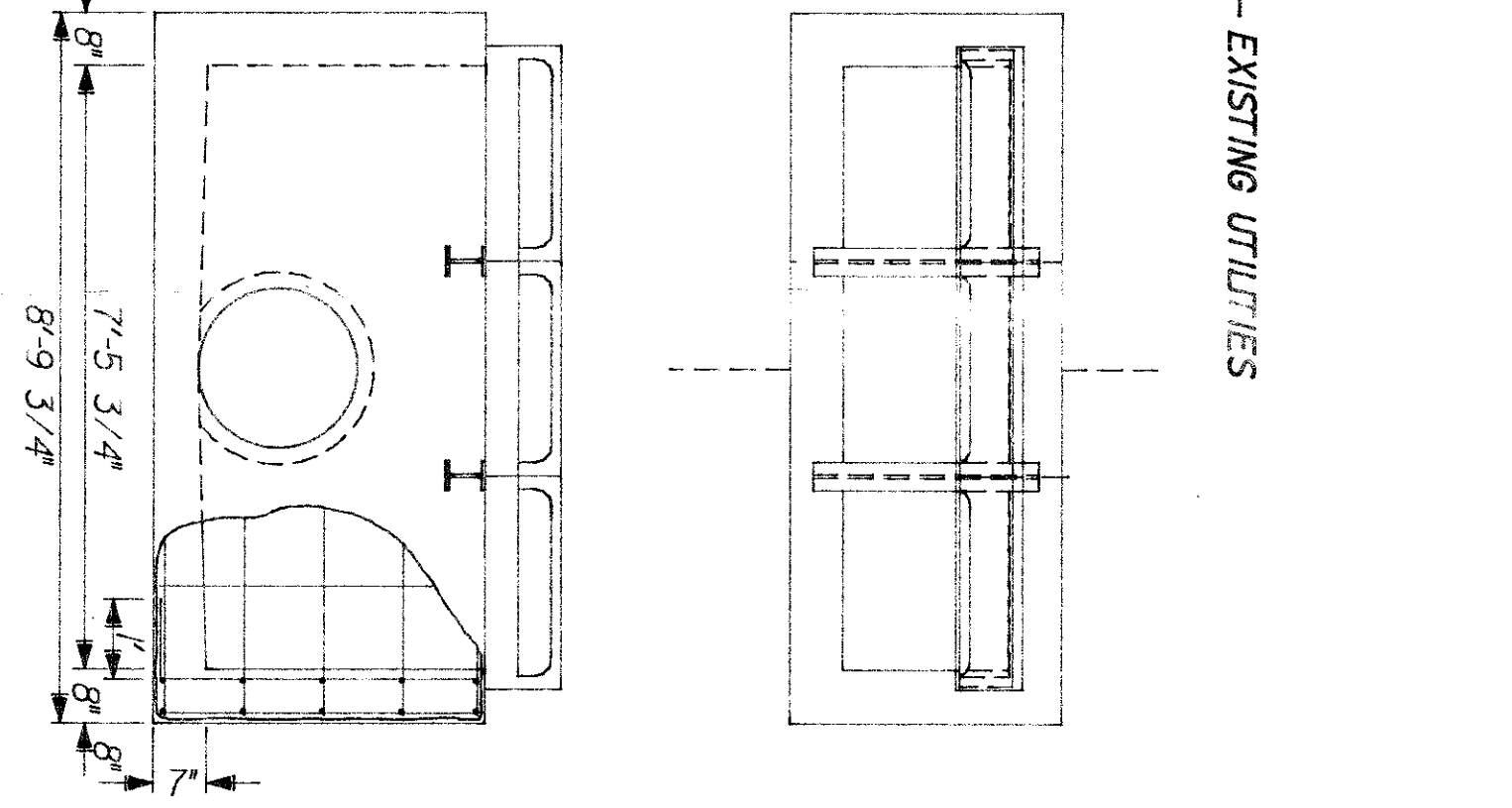
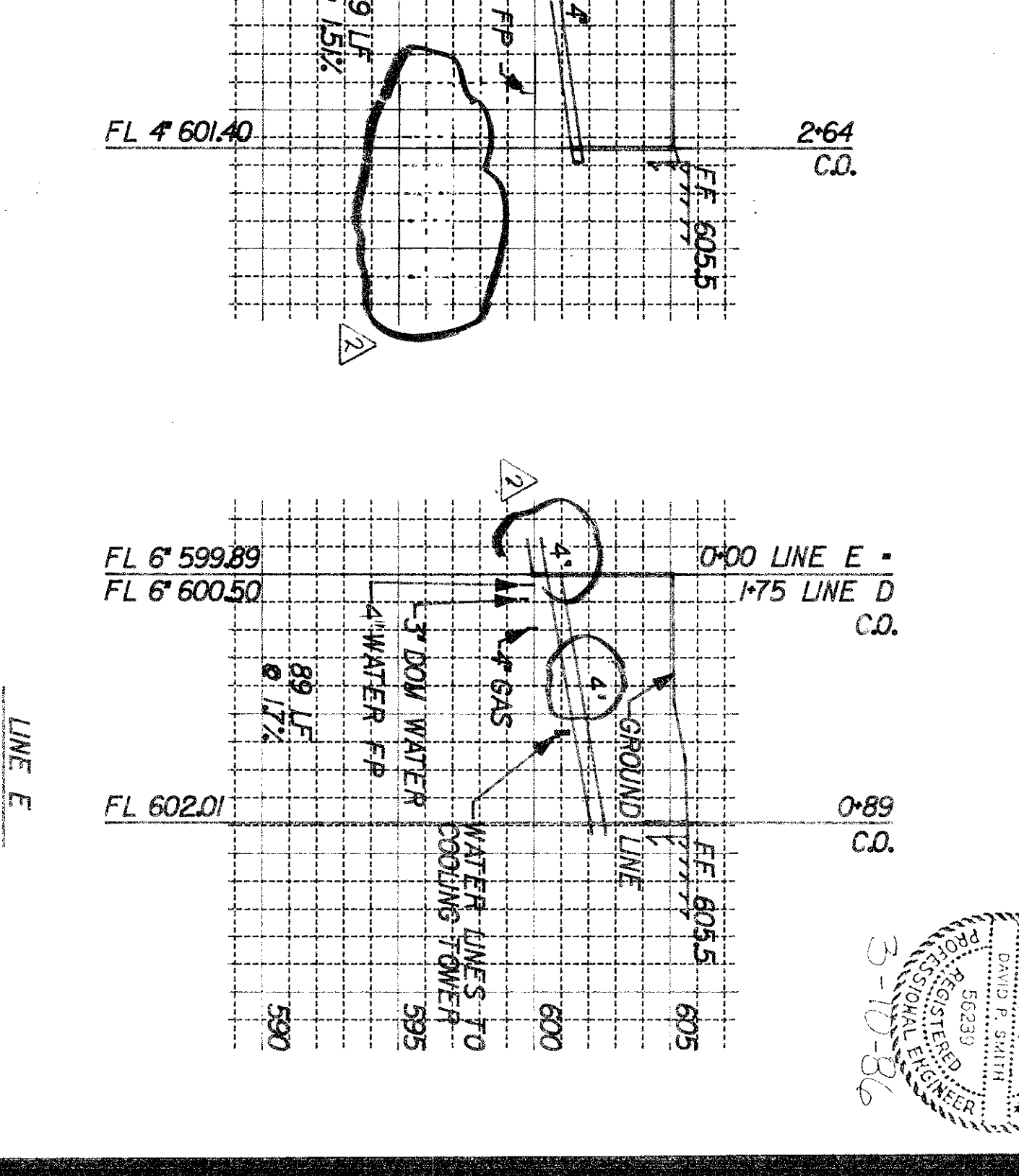
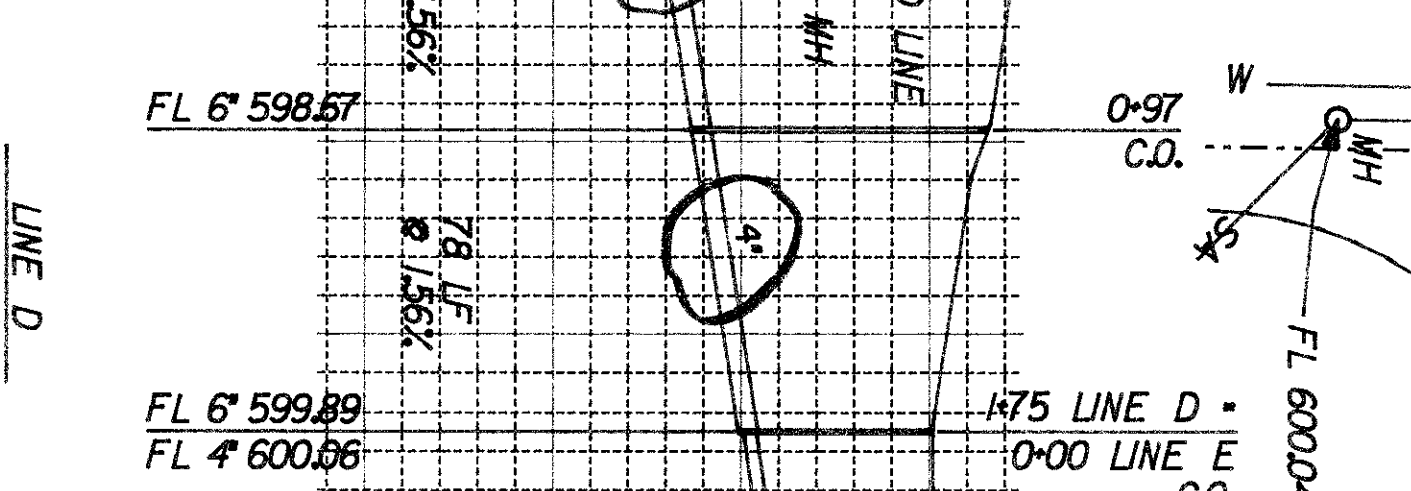
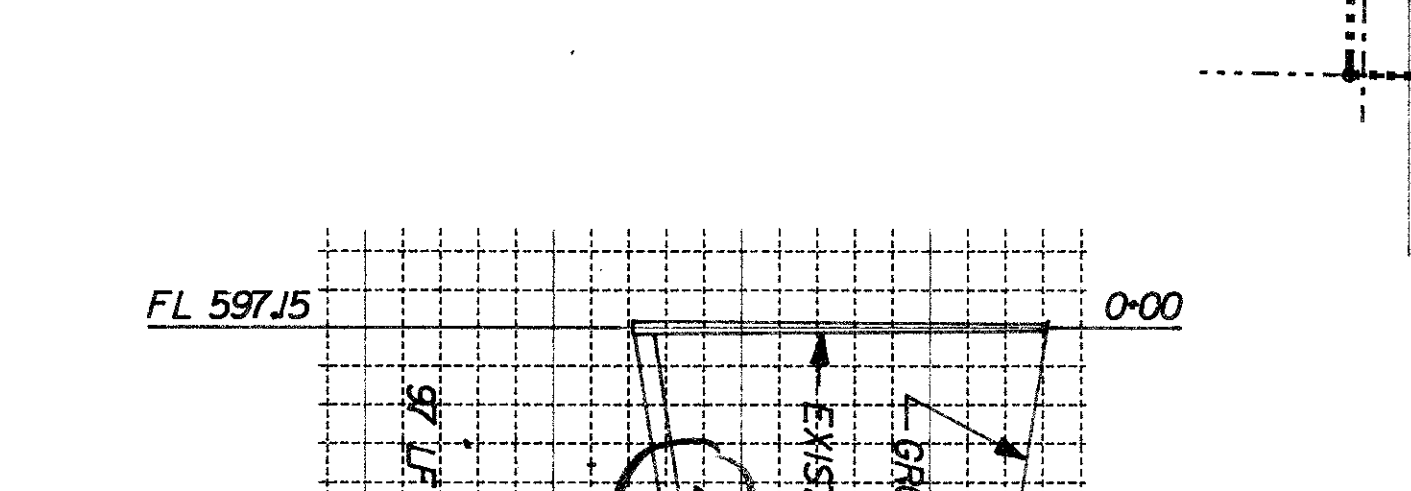
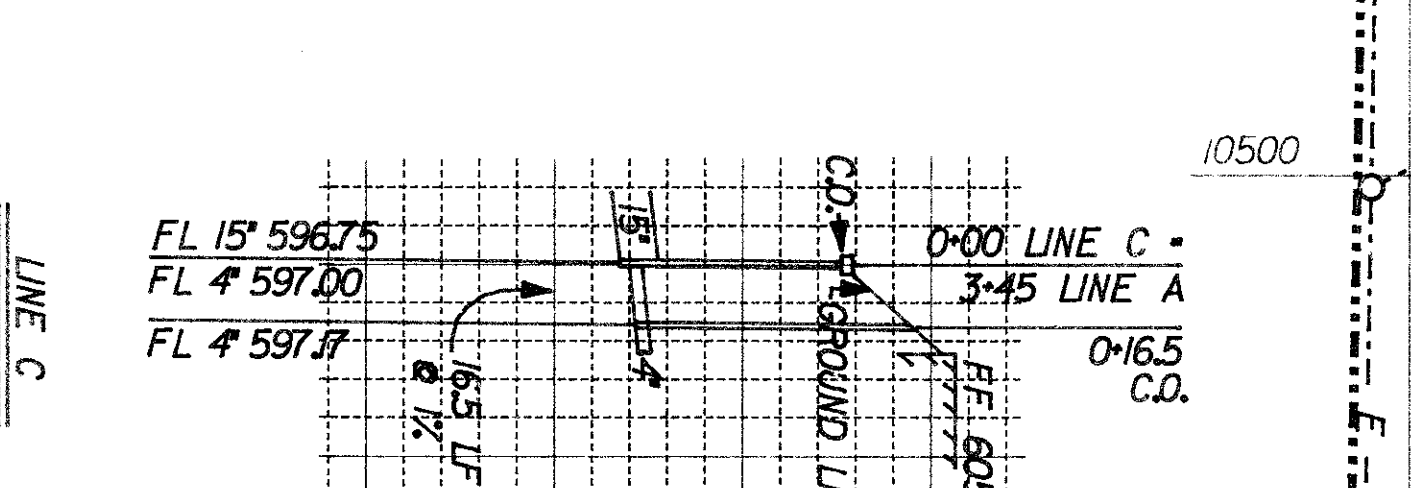
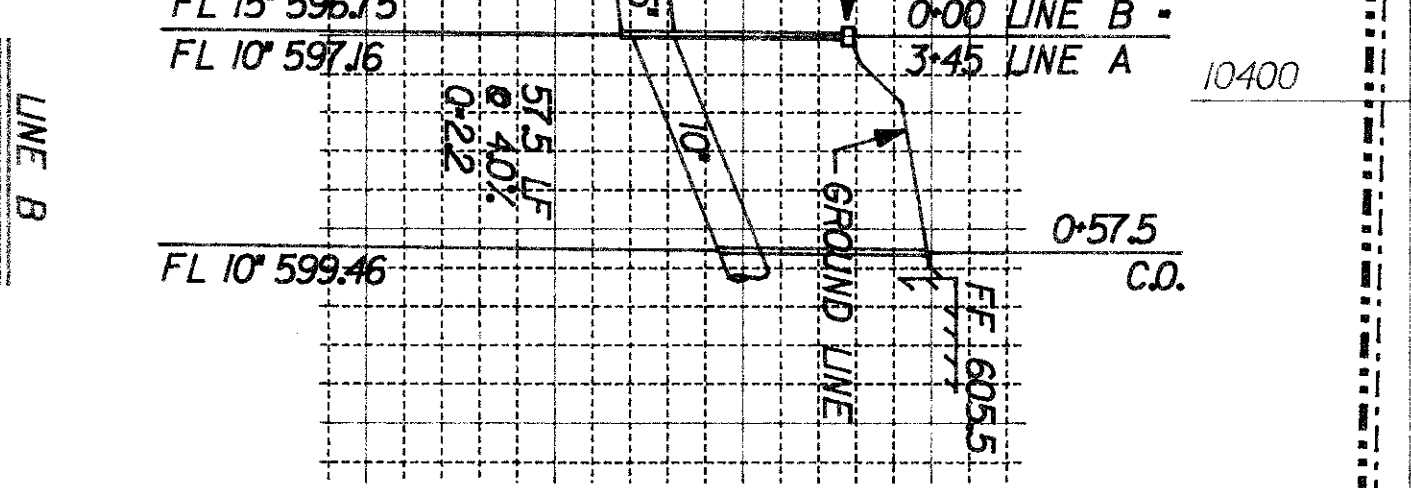
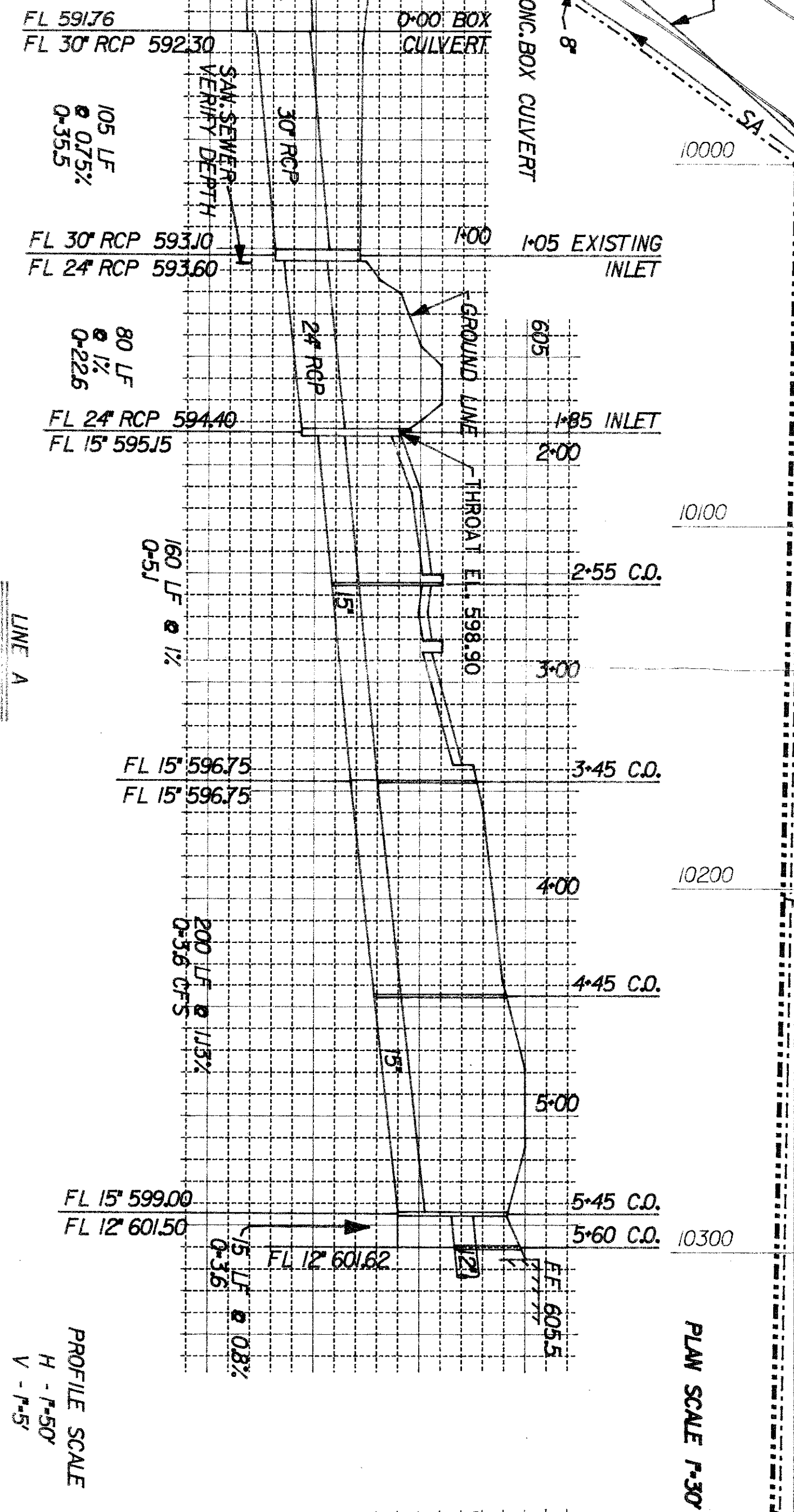
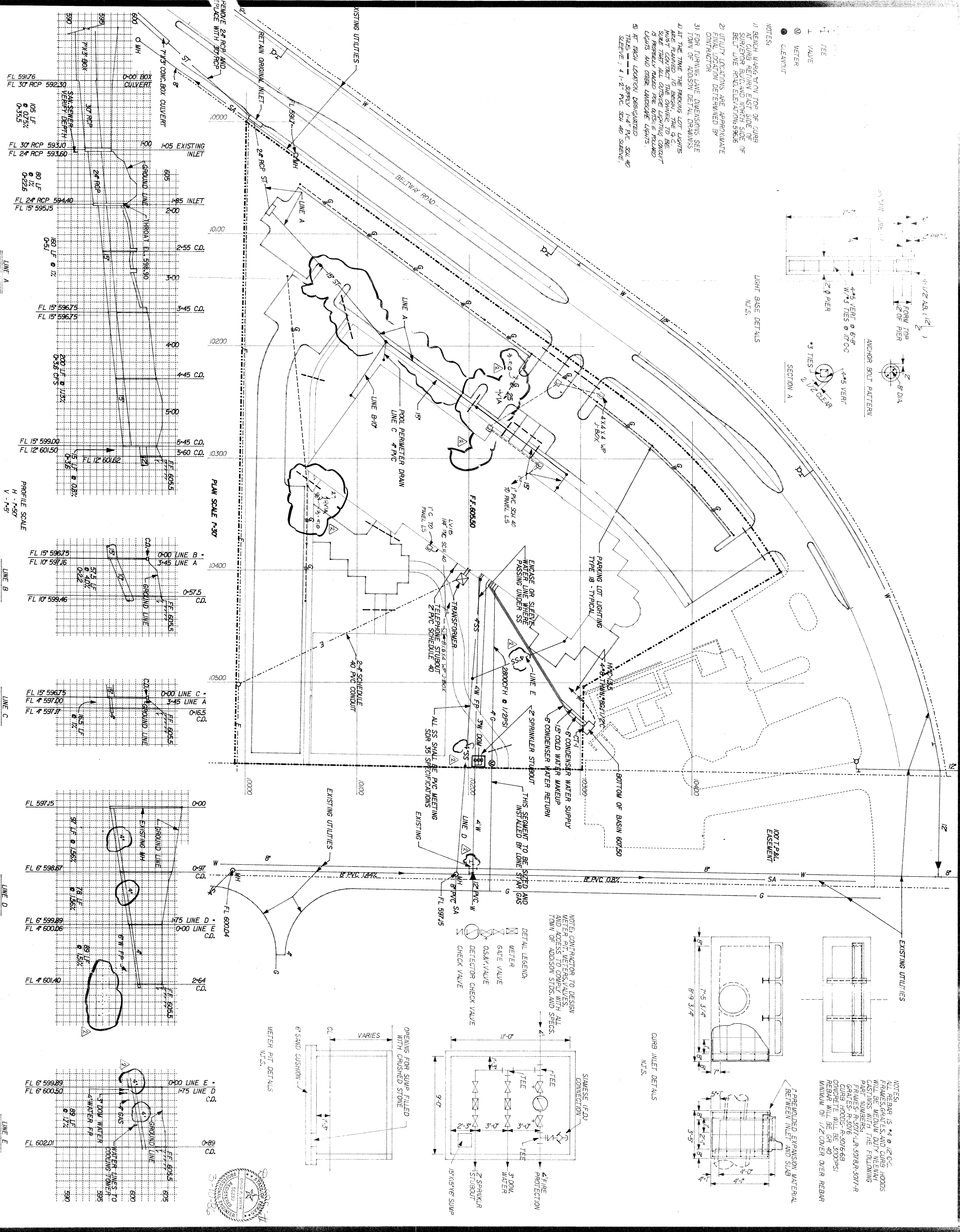
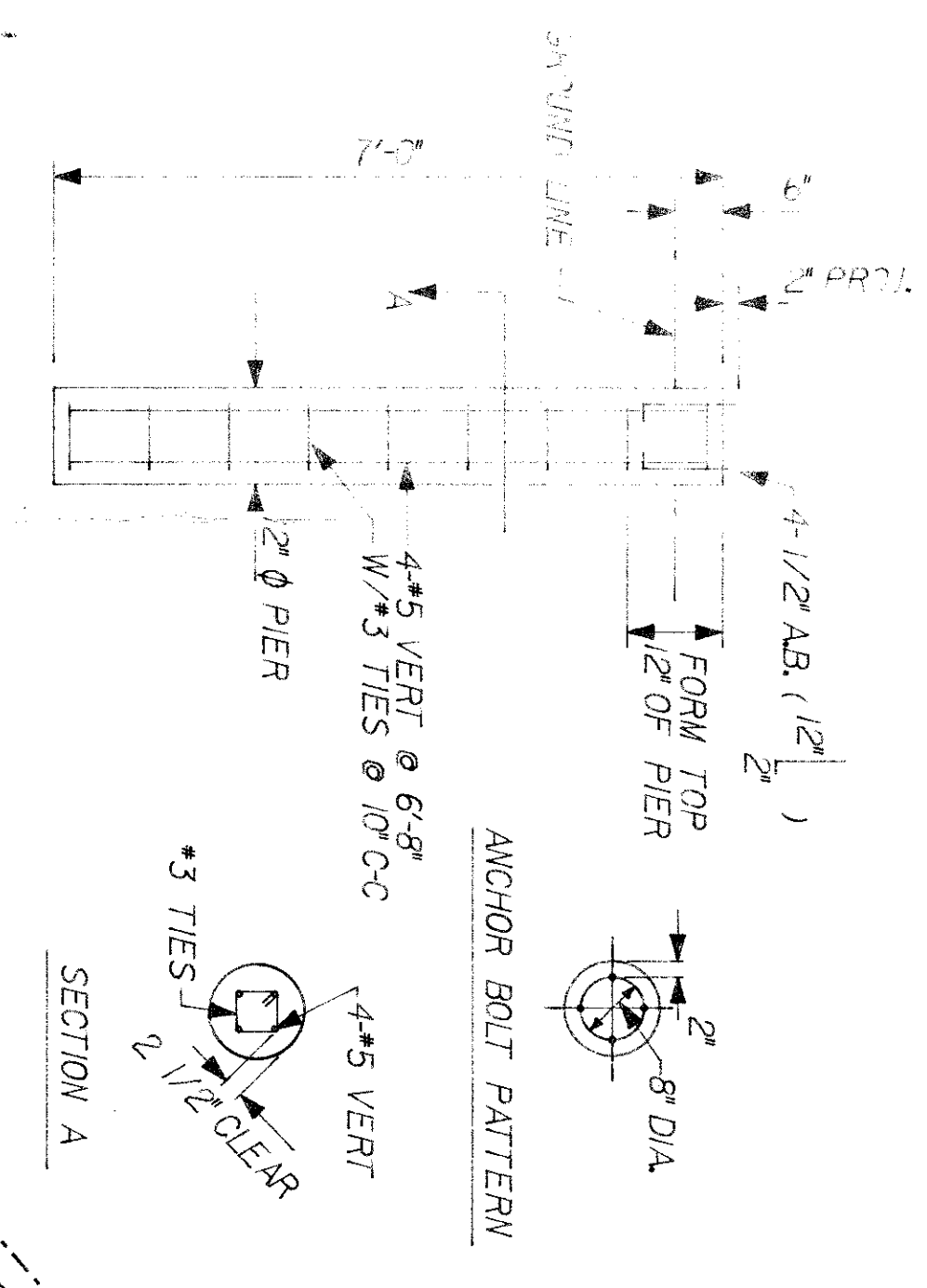
SHEET NO. 1-3

DATE 4.3.06

NO. 4.21.06



- NOTES:
- 1) BENCH MARK ON TOP OF CURB AT CURB RETURN EAST SIDE OF SUPERVISOR BUILDING NORTH SIDE OF BELTWAY ROAD ELEVATION 598.6
  - 2) UTILITY LOCATIONS ARE APPROXIMATE CONTRACTOR
  - 3) FOR TURNING LANE DIMENSIONS SEE TOWN OF ADDISON DETAIL DRAINAGE
  - 4) AT THE TIME THE PARKING LOT LIGHTS WERE PLACED THE PERMITS TO BE SIGNED THE OUTSIDE LIGHTING CONTRACT IS PROBABLY RATED FOR OUTSIDE RAILROAD LIGHTS AND OTHER LANDSCAPE LIGHTS.
  - 5) AT RAIL LOCATION DISAPPOINTED THIS SUPPLY 4" PVC SCH 40 SERVICE 1" 1-2" PVC SCH 40 SERVICE



**The Beham Group**  
Dallas

architects  
planners  
engineers

1341 W. Mockingbird In.  
Suite 517 E  
Dallas, Texas

**ADDISON RECREATION CENTER**  
3900 BELTWAY DRIVE  
ADDISON, TEXAS

A.A.C.

COMPOSITE

DATE	BY	REVISION

no. 4-31-80

date 4-3-80

CHK'D J. MORROW

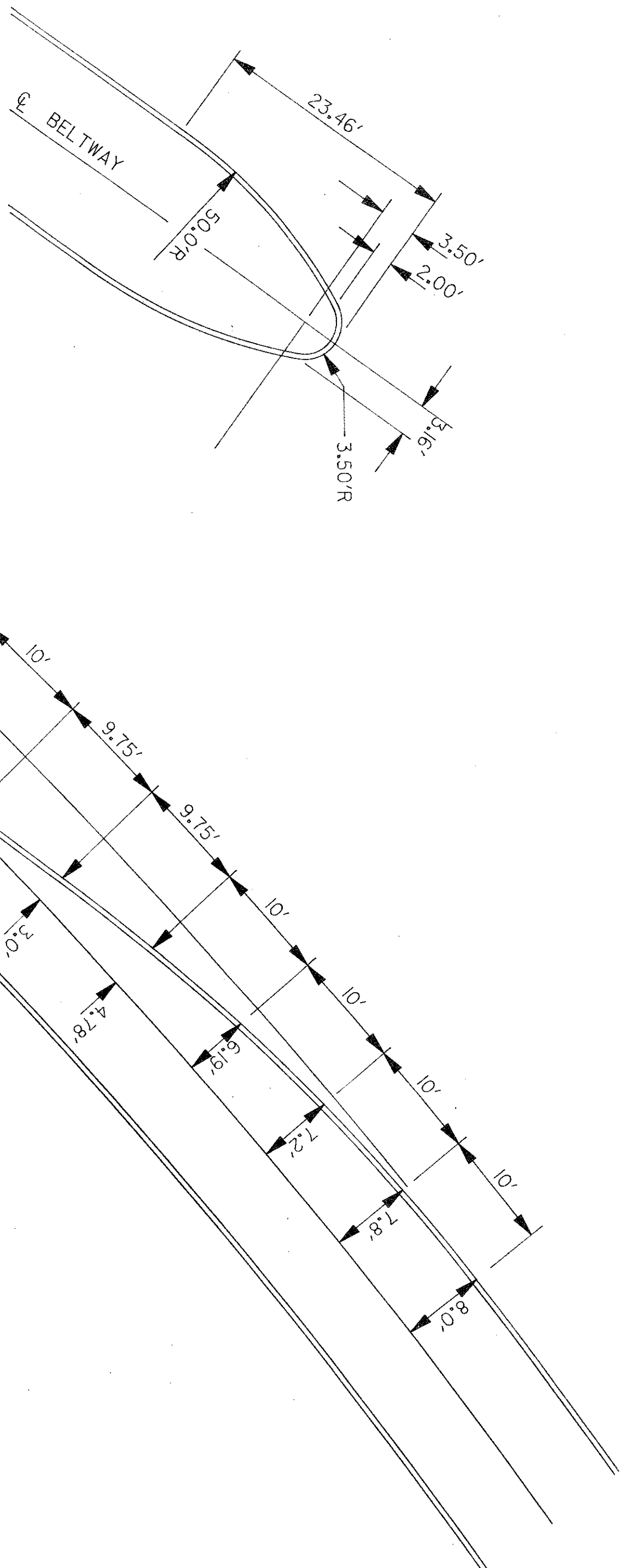
DATE 4-3-86

REVISIONS

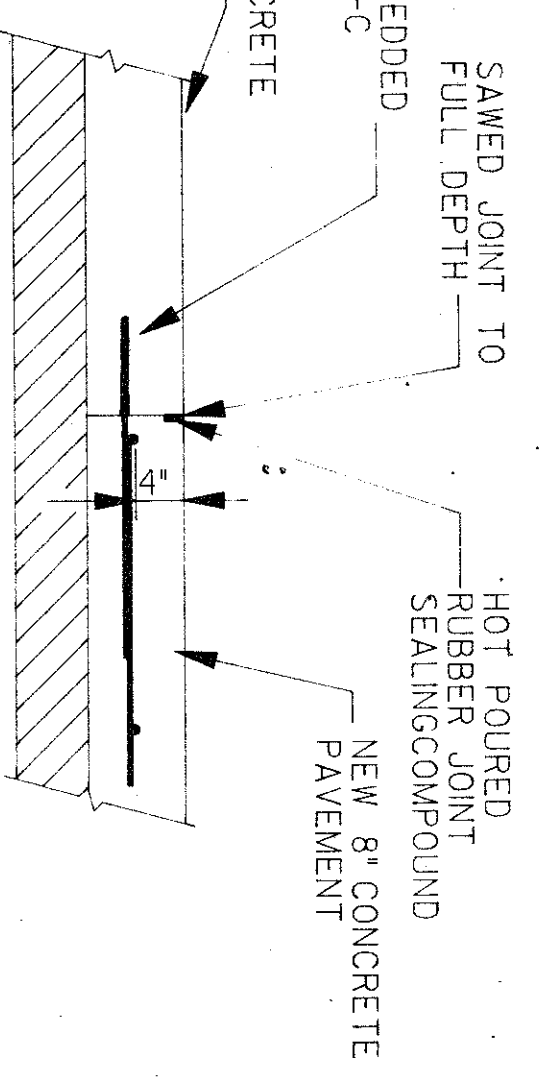
SHEET 1 OF 3

L-3

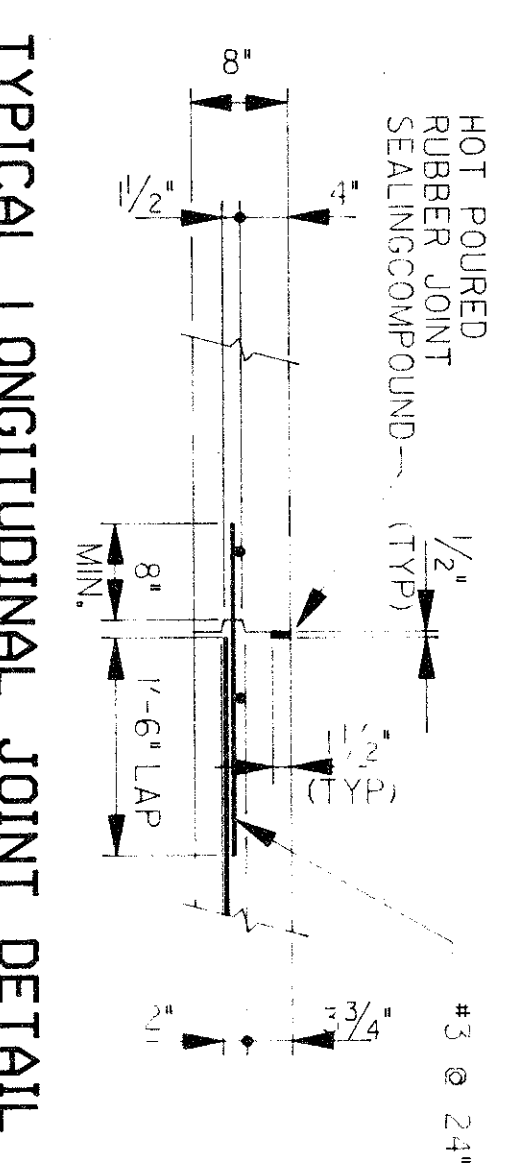




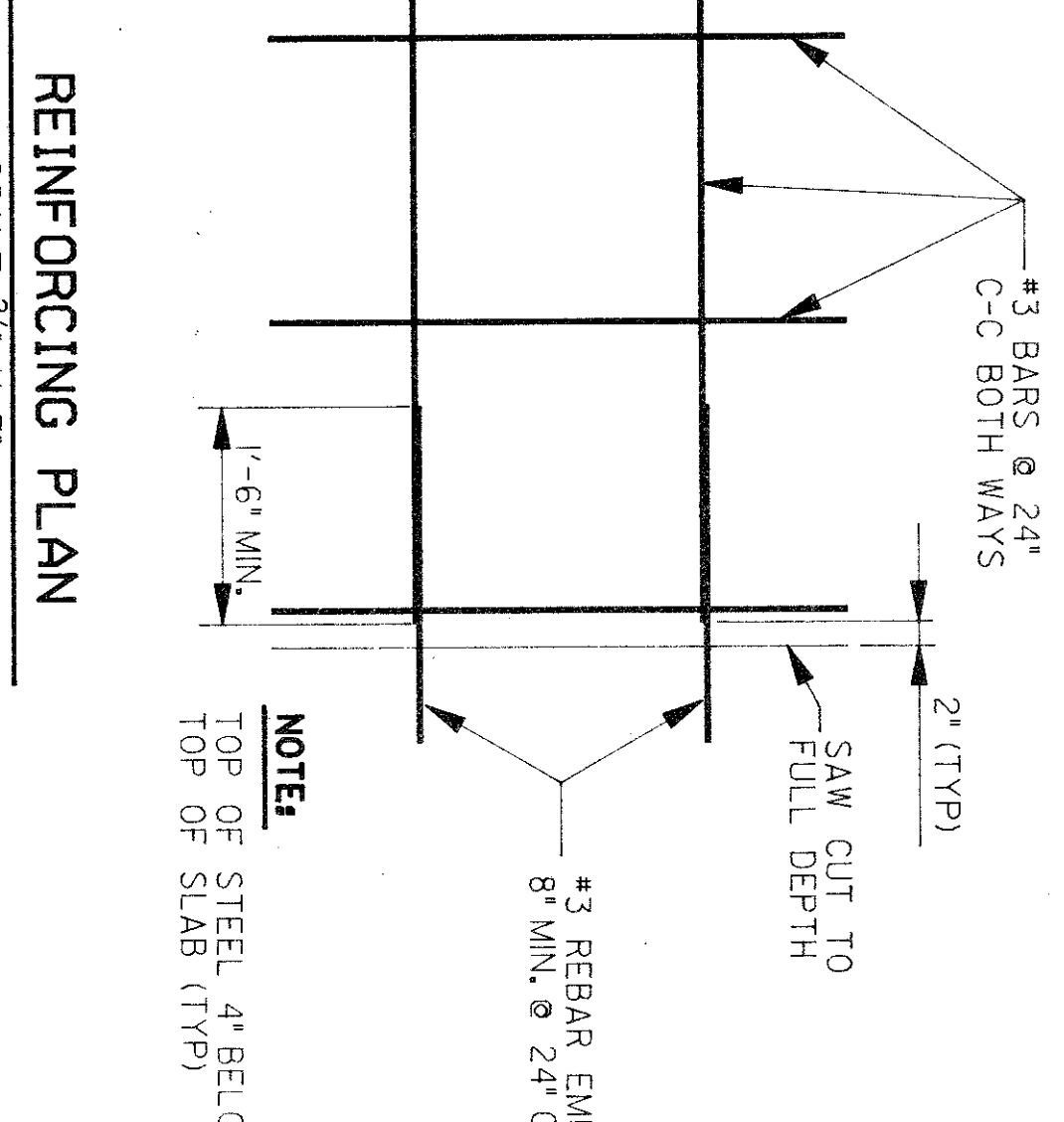
**TURNING LANE DETAILS**



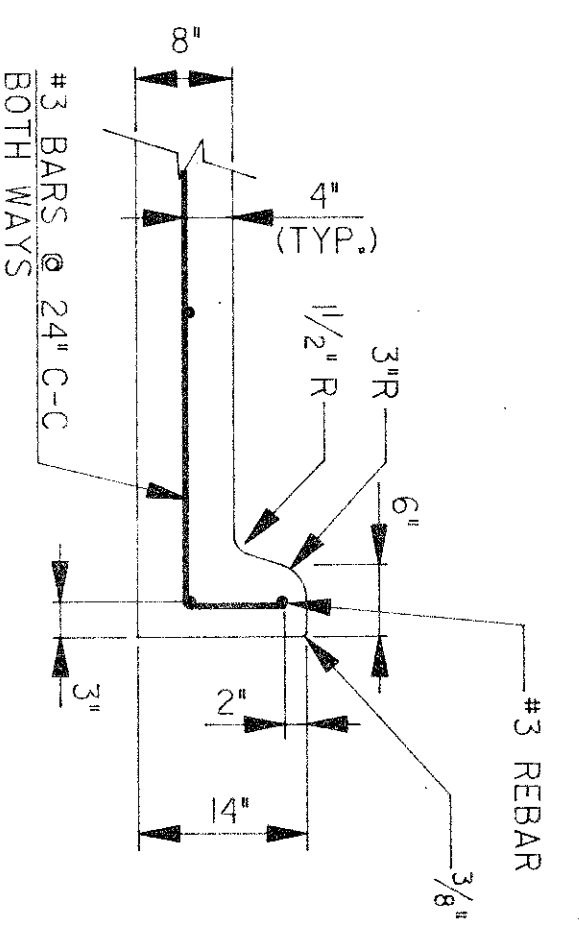
**TYPICAL LONGITUDINAL JOINT DETAIL  
ABUTTING OLD PAVEMENT**



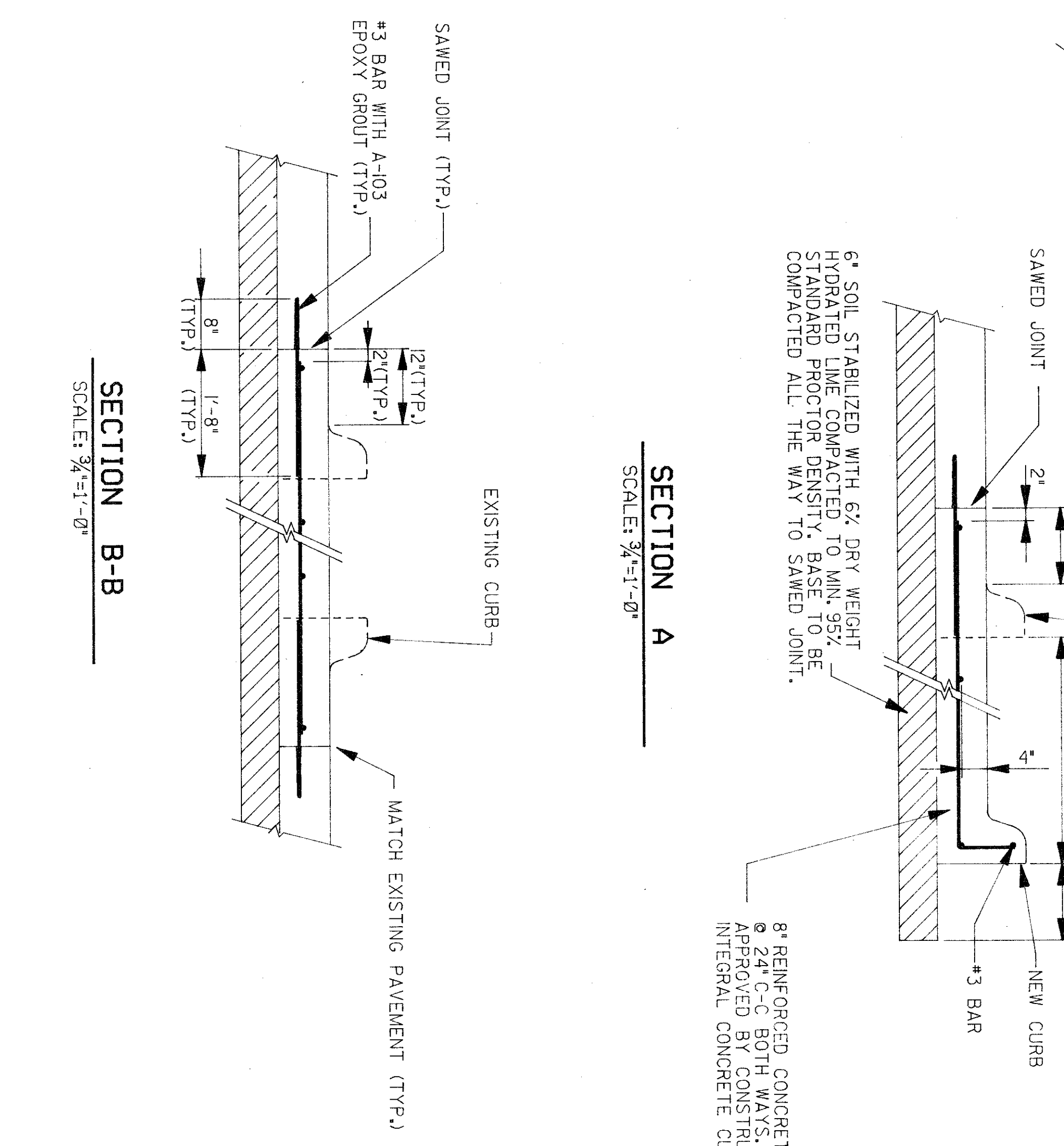
**TYPICAL LONGITUDINAL JOINT DETAIL  
NEW PAVEMENT**



**REINFORCING PLAN**

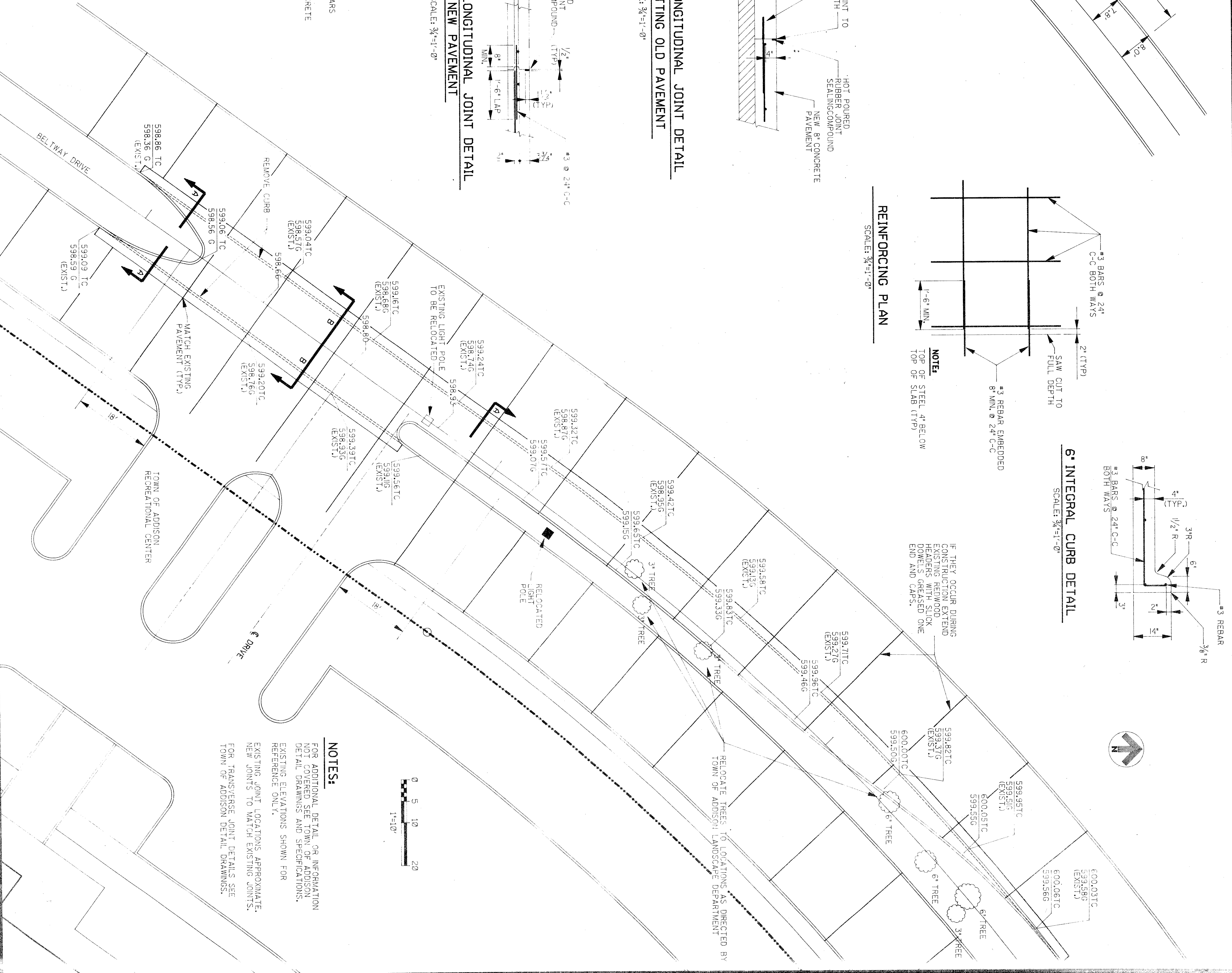


**6" INTEGRAL CURB DETAIL**



**SECTION A**

**SECTION B-B**



**NOTES:**

EXISTING JOINT LOCATIONS APPROXIMATE. NEW JOINTS TO MATCH EXISTING JOINTS. FOR TRANSVERSE JOINT DETAILS SEE TOWN OF ADDISON DETAIL DRAWINGS.

IF THEY OCCUR DURING CONSTRUCTION OF EXISTING CEMENTED HEADERS WITH SLICK DOWELS RELEASE ONE END AND CAPS.

RELOCATE TREES TO LOCATIONS AS DIRECTED BY TOWN OF ADDISON LANDSCAPE DEPARTMENT.

**The Benhar Group**  
architects  
engineers  
planners  
13417 w. modkroff  
suite 517 e  
dallas, texas

drawn: [ ]  
checked: [ ]  
date: [ ]

revision: [ ]  
no. [ ]  
date: [ ]

Project Title: [ ]  
Location: [ ]  
Drawing No.: [ ]

Revised Plans - A.A.C. Median C/T.

COMPOSITE	DATE	BY



SHEET NO.	
BASE	C
COMPOSITE	C
DATE	
BY	
CHKD	
APP'D	

PIPE SHALL BE LAYED AND JOINED IN ACCORDANCE WITH THE MANUFACTURER'S RECOMMENDATIONS.

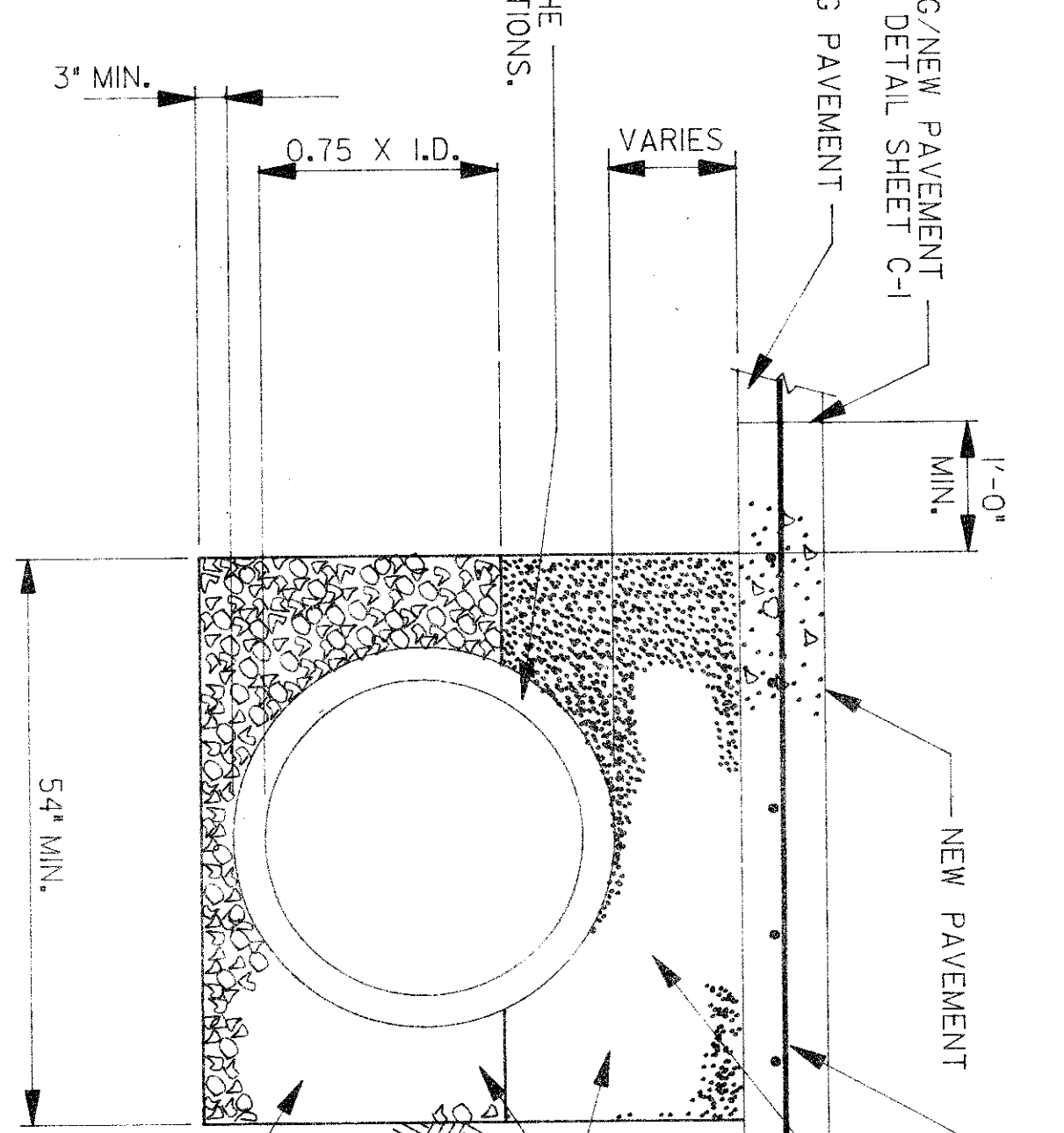
SEE EXISTING/NEW PAVEMENT CONNECTION DETAIL SHEET C-1

EXISTING PAVEMENT

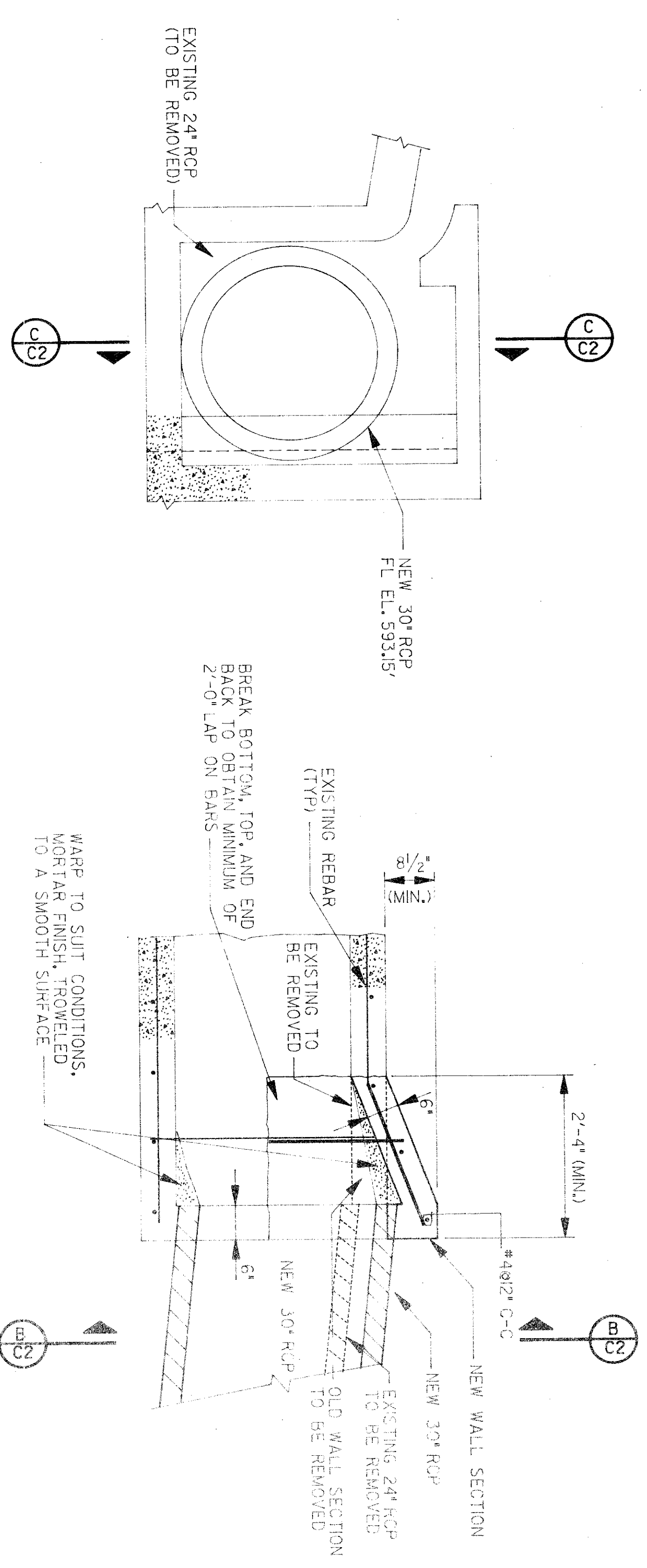
NEW PAVEMENT

SELECT FILL EXCAVATED MATERIAL FROM TRENCH MANHOLE APPROVED BY ENGINEER

BACKFILL TO BE PLACED IN LIFTS NOT EXCEEDING 4" IN DEPTH AT NEAR OPTIMUM MOISTURE CONTENT AND COMPACTED WITH MECHANICAL EQUIPMENT TO 95% OF STANDARD PROCTOR DENSITY FOR FULL DEPTH OF THE TRENCH.



TRENCH DETAIL  
SCALE 3/4" = 1'-0"



SECTION B & C CULVERT  
SCALE 3/4" = 1'-0"

DETAIL A CULVERT  
SCALE 3/4" = 1'-0"

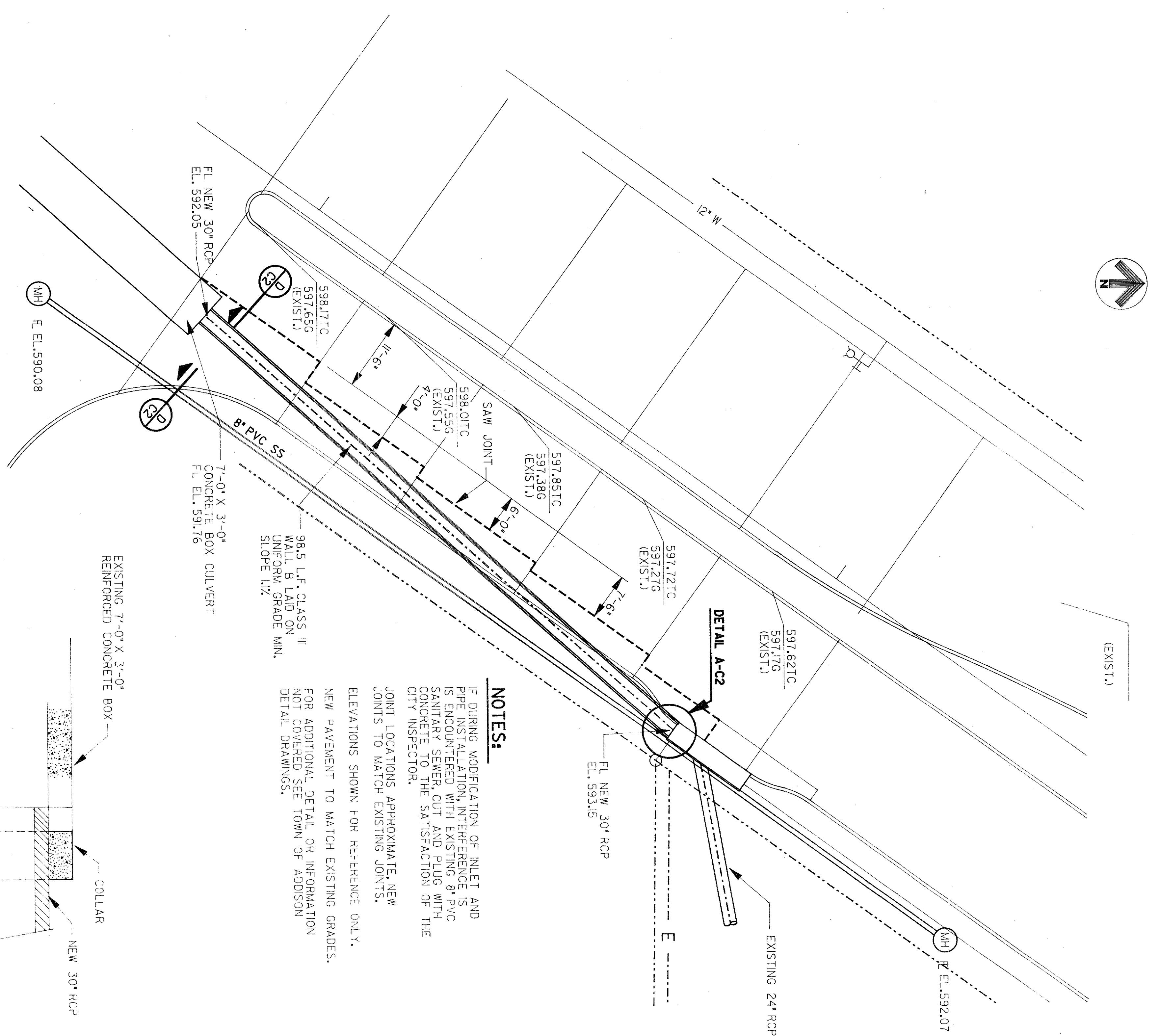
**NOTES:**

IF DURING MODIFICATION OF INLET AND PIPE INSTALLATION INTERFERENCE IS ENCOUNTERED WITH EXISTING 8" PIG SANITARY SEWER, CUT OUT SECTION OF THE CITY INSPECTOR.

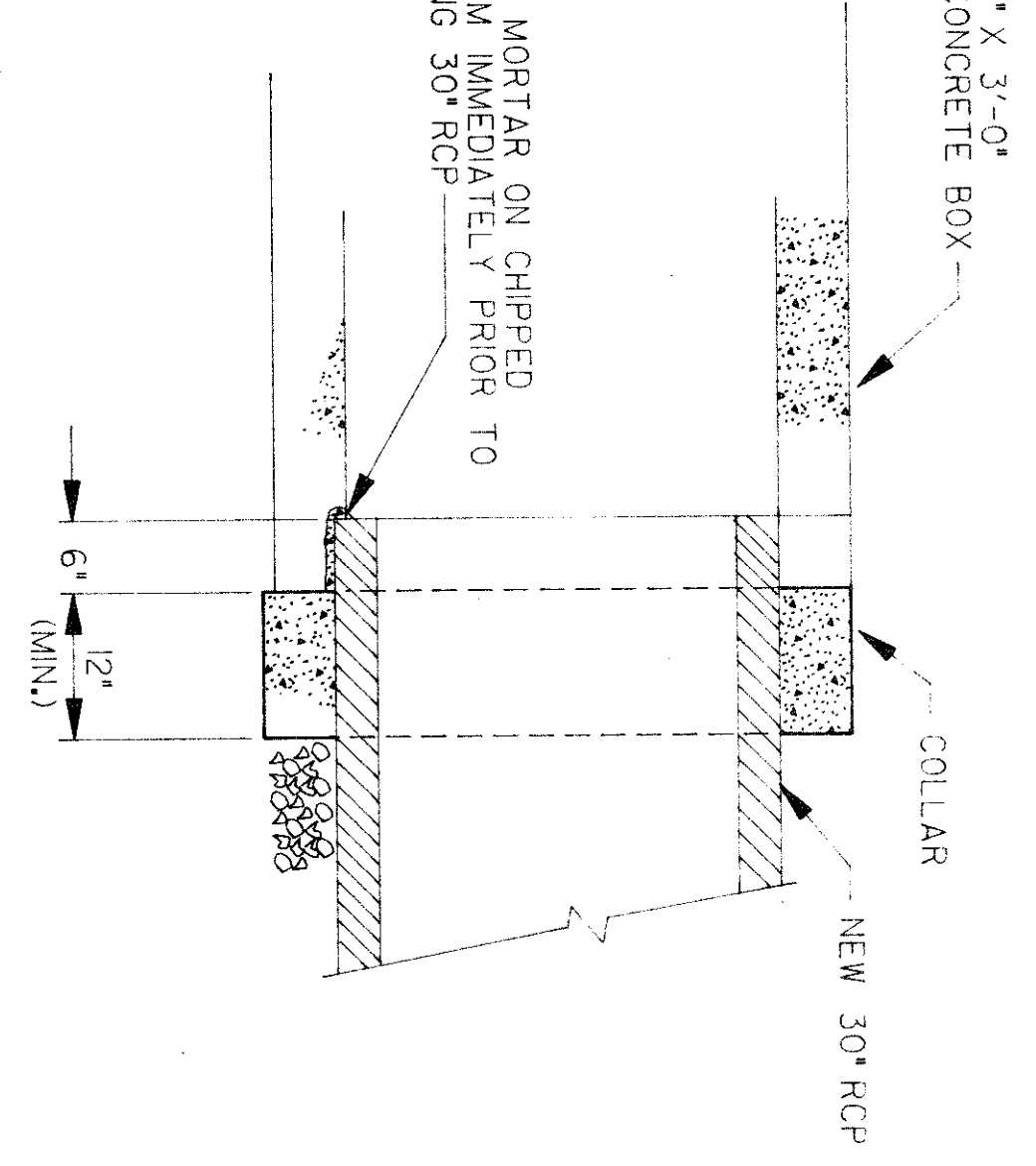
JOINT LOCATIONS APPROXIMATE, NEW JOINTS TO MATCH EXISTING JOINTS.

ELEVATIONS SHOWN FOR REFERENCE ONLY, NEW PAVEMENT TO MATCH EXISTING GRADES.

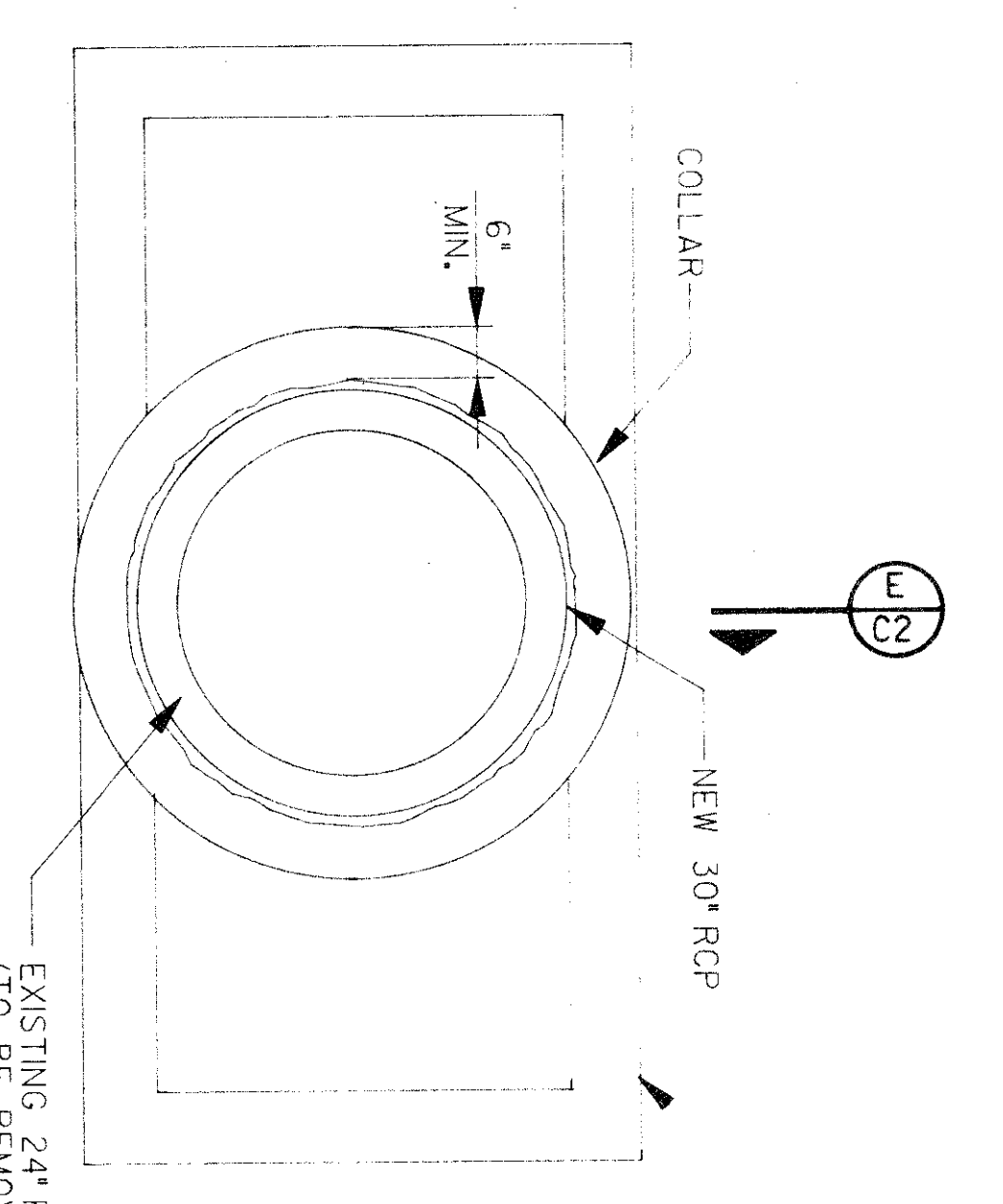
FOR ADDITIONAL DETAIL OR INFORMATION NOT COVERED, SEE TOWN OF ADDISON DETAIL DRAWINGS.



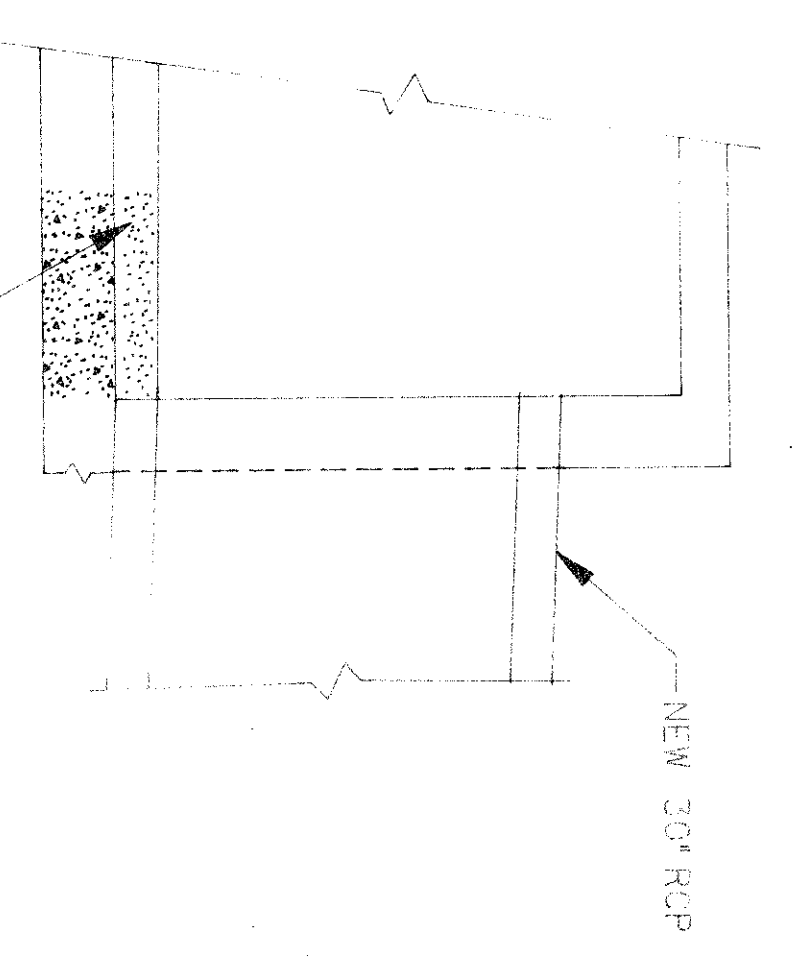
PLAN  
SCALE 1/8" = 1'-0"



SECTION E  
SCALE 3/4" = 1'-0"



SECTION D  
SCALE 3/4" = 1'-0"



SECTION C  
SCALE 3/4" = 1'-0"

**NOTE:**

REMOVE 24" RCP, CHIP OUT SUFFICIENT CONCRETE TO ACCEPT 30" RCP (CHIP CONCRETE FROM BOTTOM RATHER THAN TOP). PIPE REMOVED COULD BE EXTENDING 6" MINIMUM PAST EDGE OF CHIPPED CONCRETE. VIBRATE SUFFICIENTLY TO FILL ALL VOIDS.

WARP TO MATCH EXISTING MORTAR FINISH, NEW MORTAR TO MATCH EXISTING MORTAR FINISH.

**The Benham Group**  
architects  
engineers  
planners

13411 W. Mockingbird Ln.  
Suite 517 B  
Dallas, Texas

no. \_\_\_\_\_  
date \_\_\_\_\_



