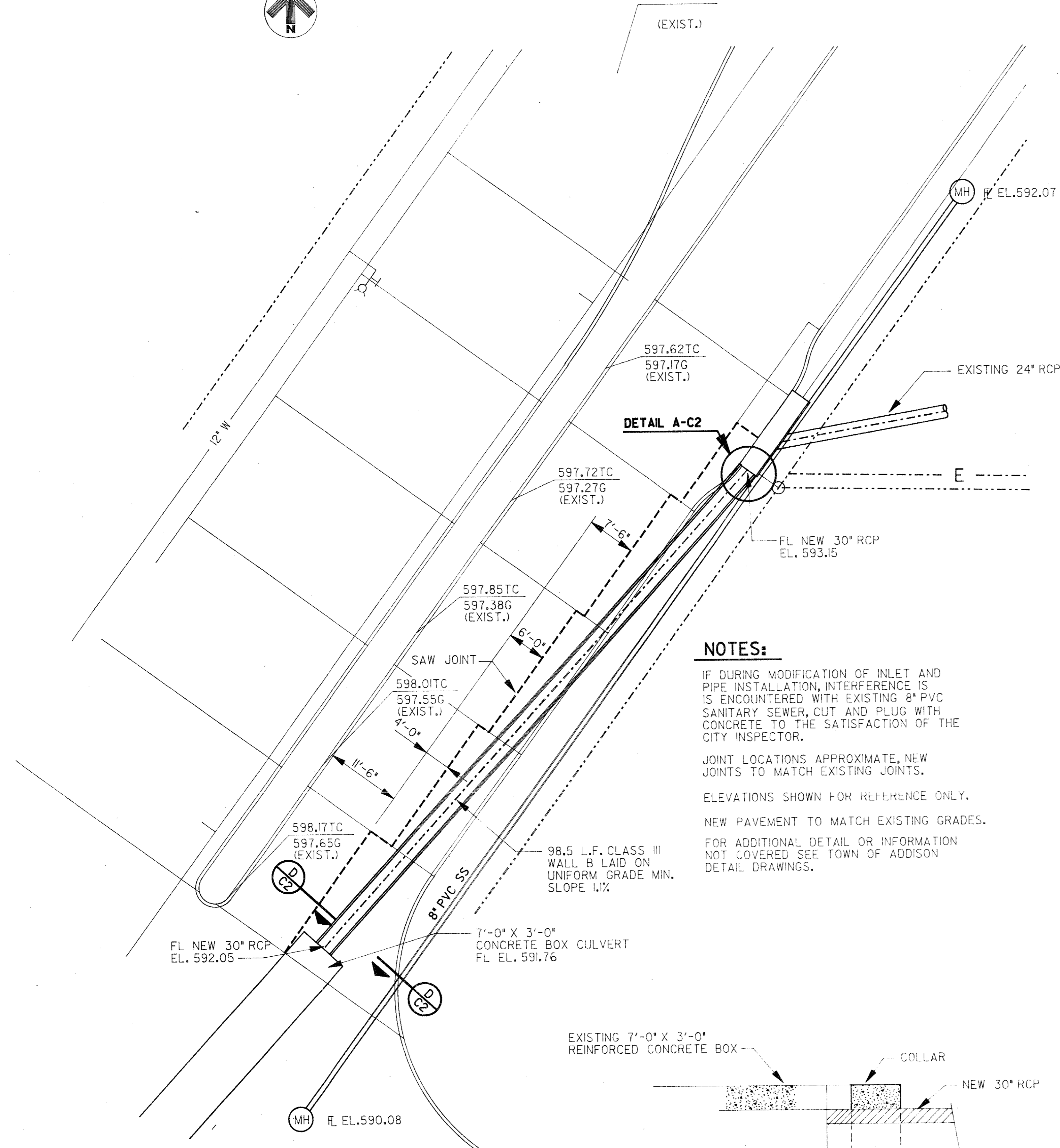
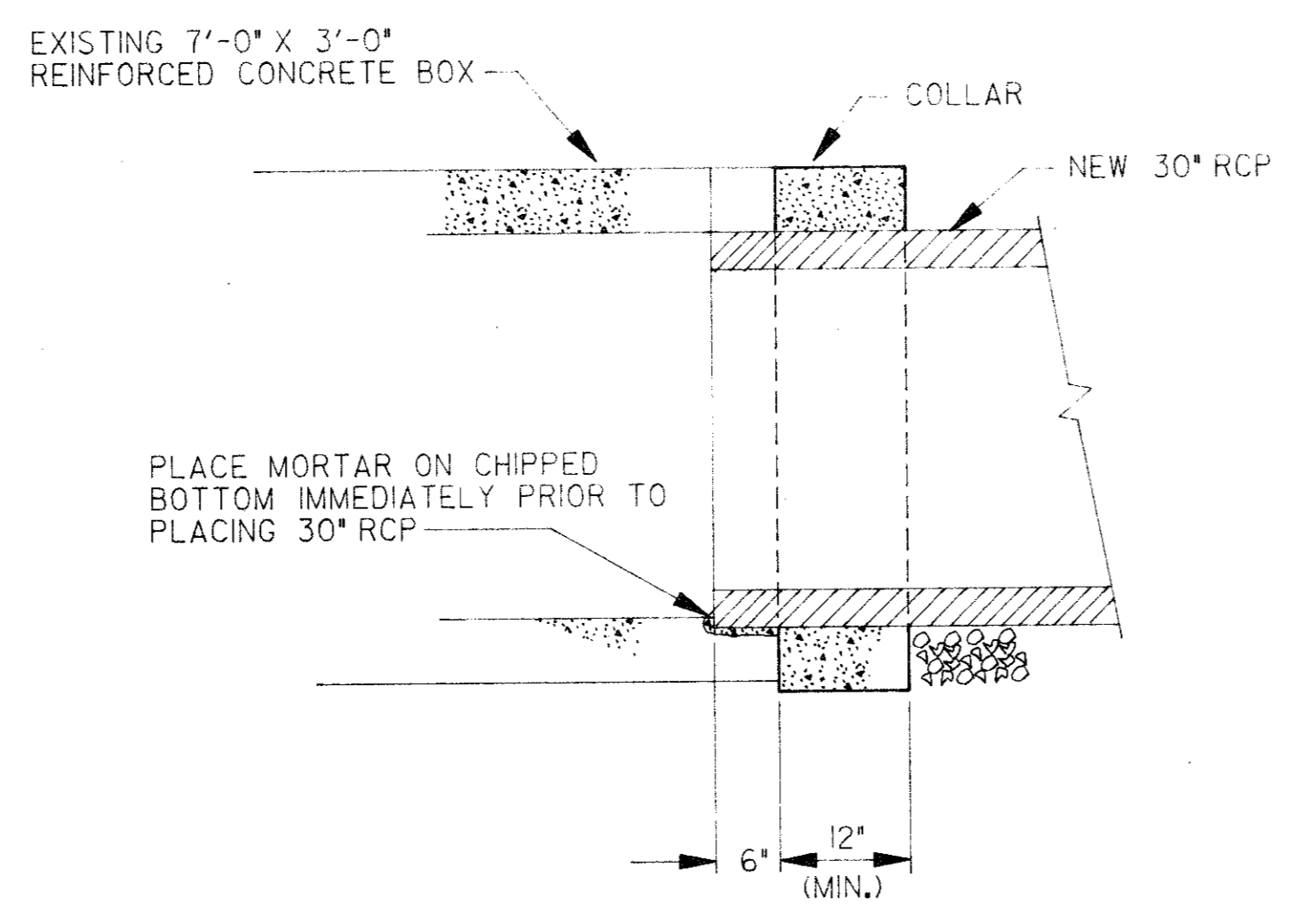


SHEET NO.	
BASE	
C	
D	
E	
F	
G	
H	
I	
J	
K	
L	
M	
N	
O	
P	
Q	
R	
S	
T	
U	
V	
W	
X	
Y	
Z	

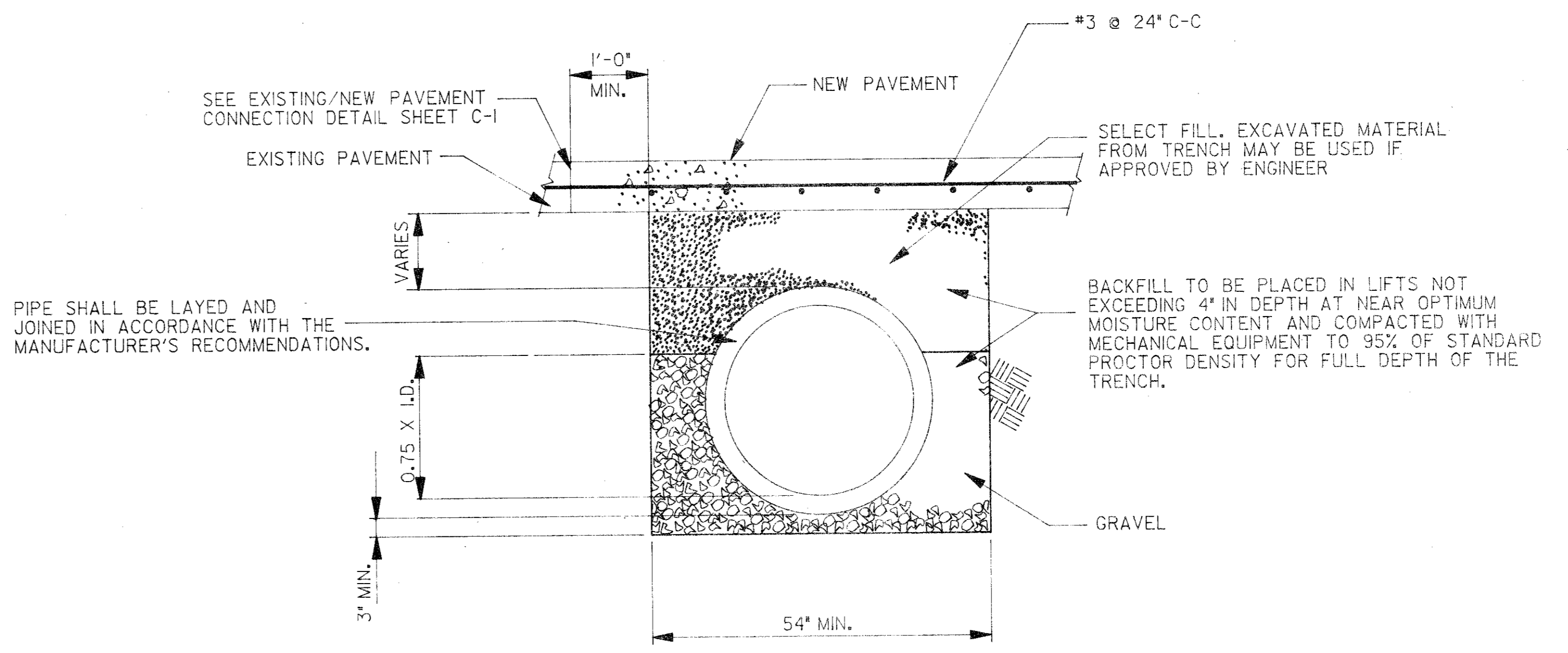


PLAN
SCALE: 1"=10'

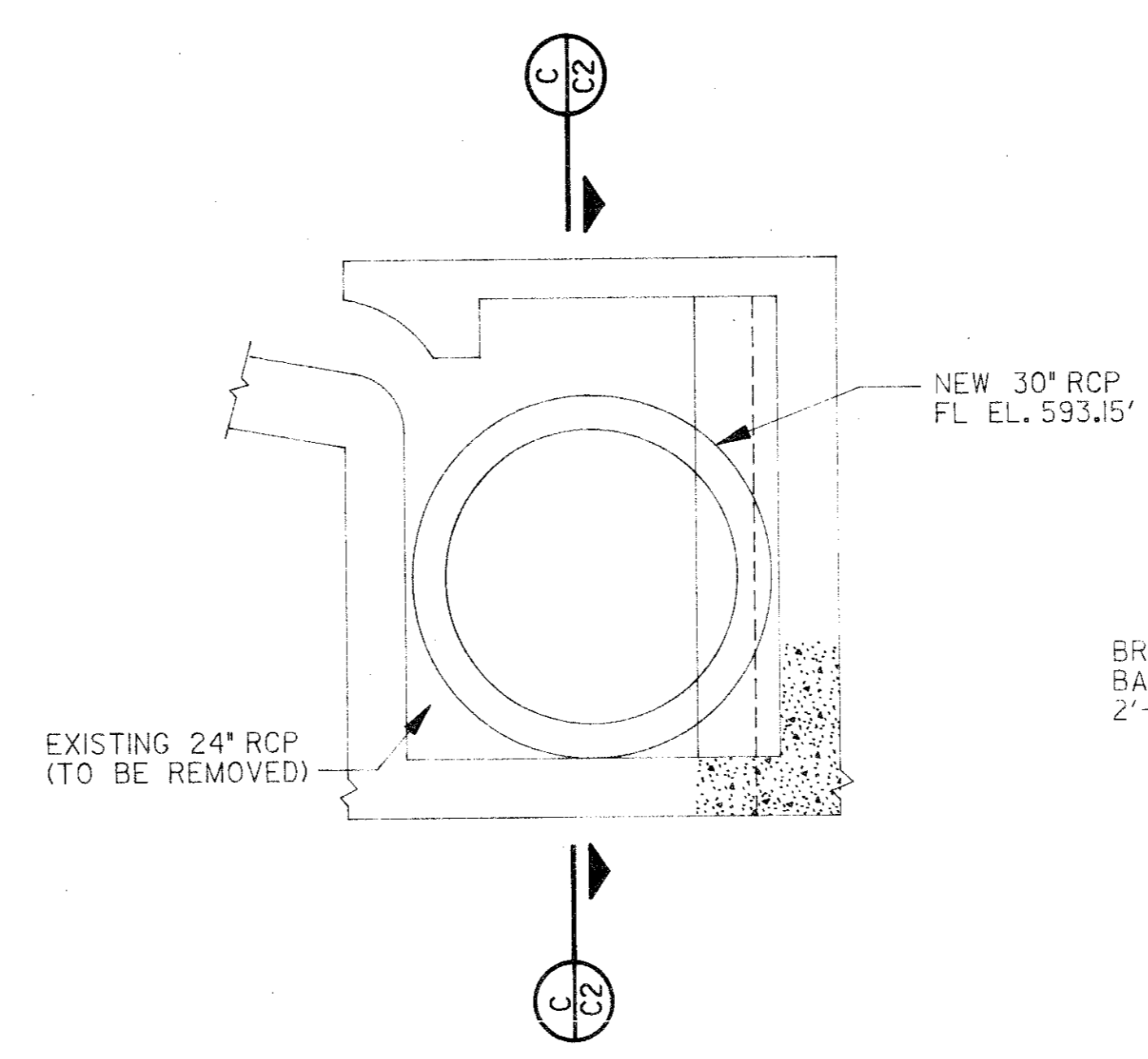
NOTES:
 IF DURING MODIFICATION OF INLET AND PIPE INSTALLATION, INTERFERENCE IS ENCOUNTERED WITH EXISTING 8" PVC SANITARY SEWER, CUT AND PLUG WITH CONCRETE TO THE SATISFACTION OF THE CITY INSPECTOR.
 JOINT LOCATIONS APPROXIMATE, NEW JOINTS TO MATCH EXISTING JOINTS.
 ELEVATIONS SHOWN FOR REFERENCE ONLY.
 NEW PAVEMENT TO MATCH EXISTING GRADES.
 FOR ADDITIONAL DETAIL OR INFORMATION NOT COVERED SEE TOWN OF ADDISON DETAIL DRAWINGS.



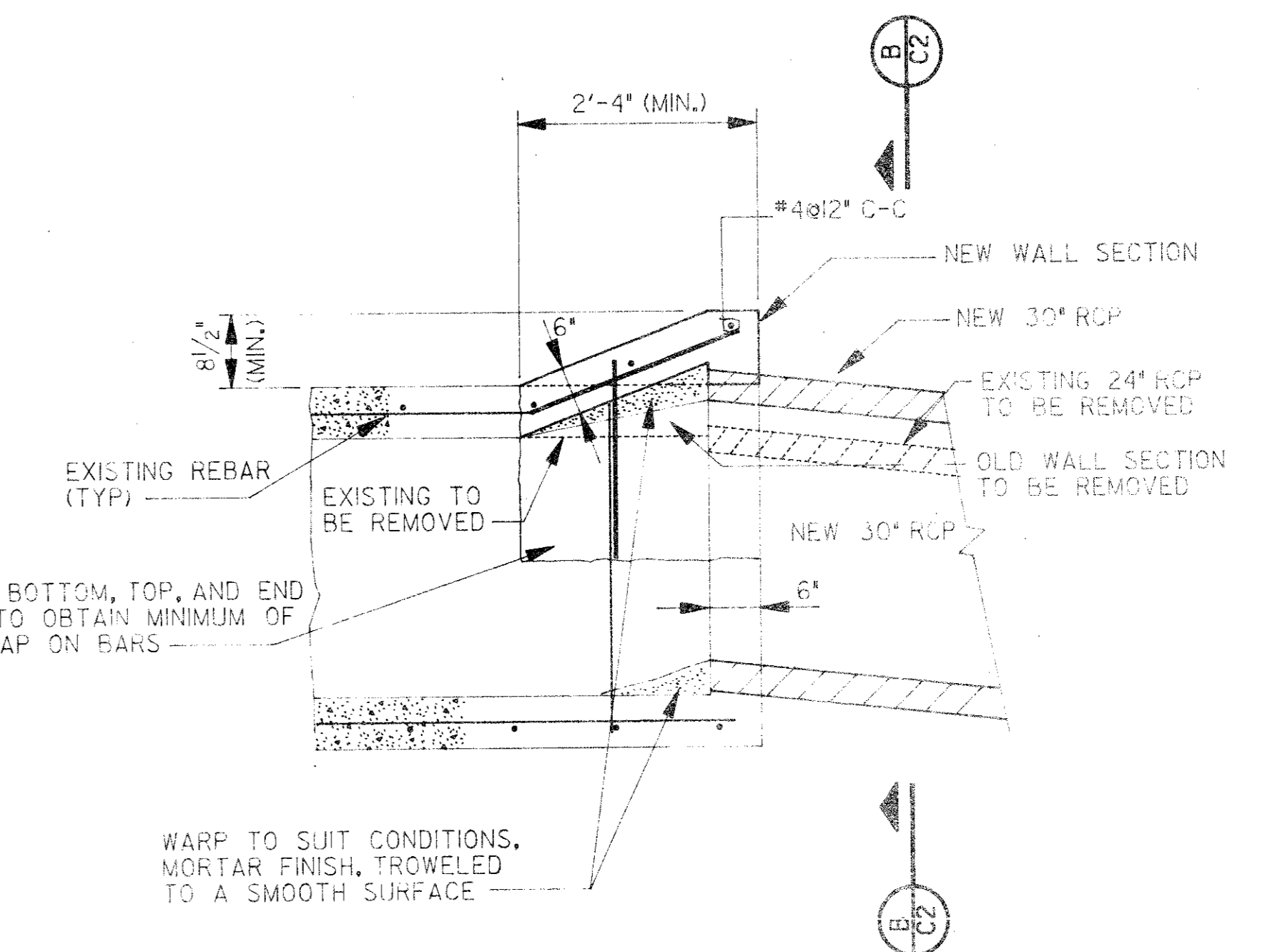
SECTION
SCALE: 3/4" = 1'-0"



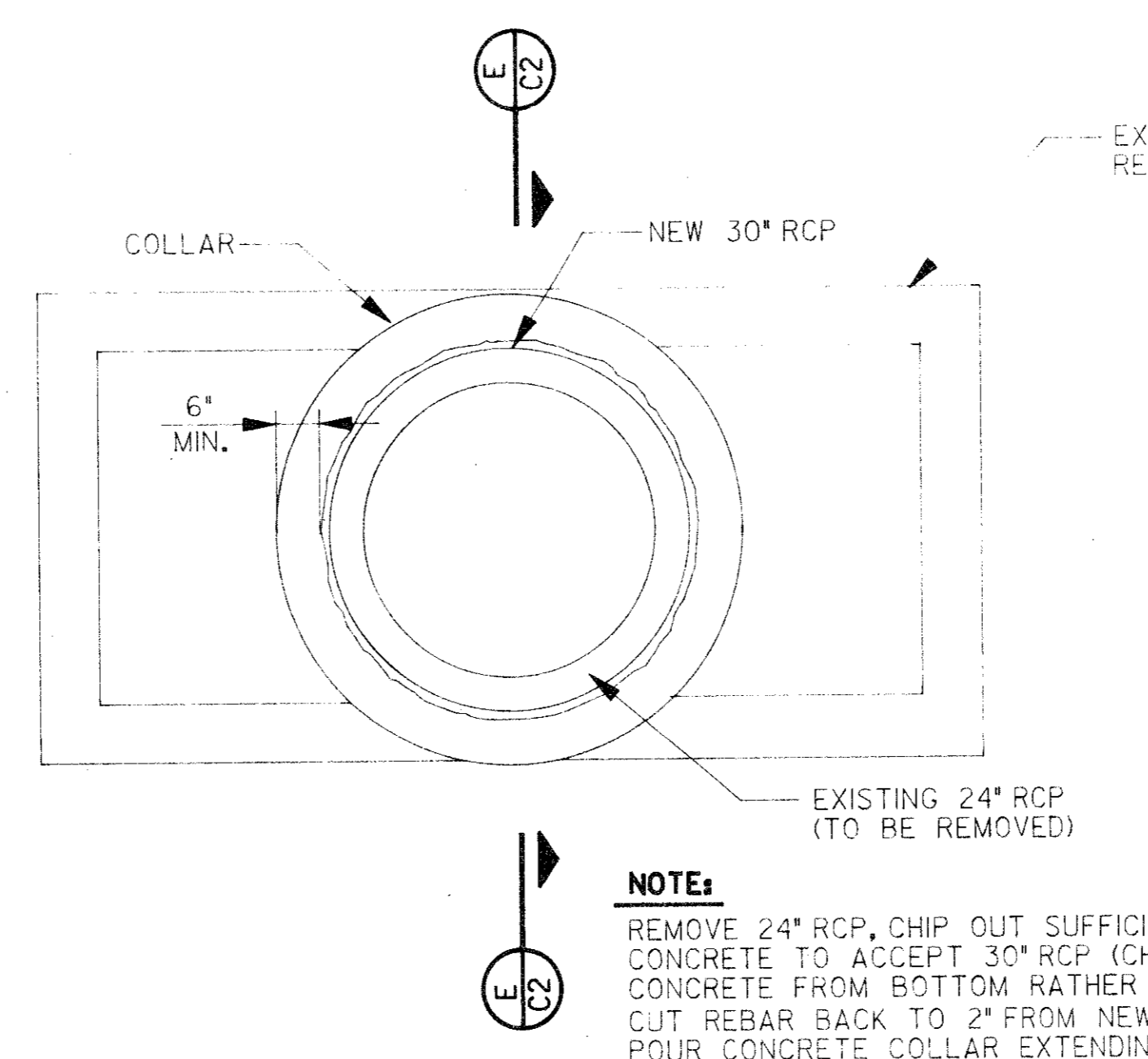
TRENCH DETAIL
SCALE: 3/4" = 1'-0"



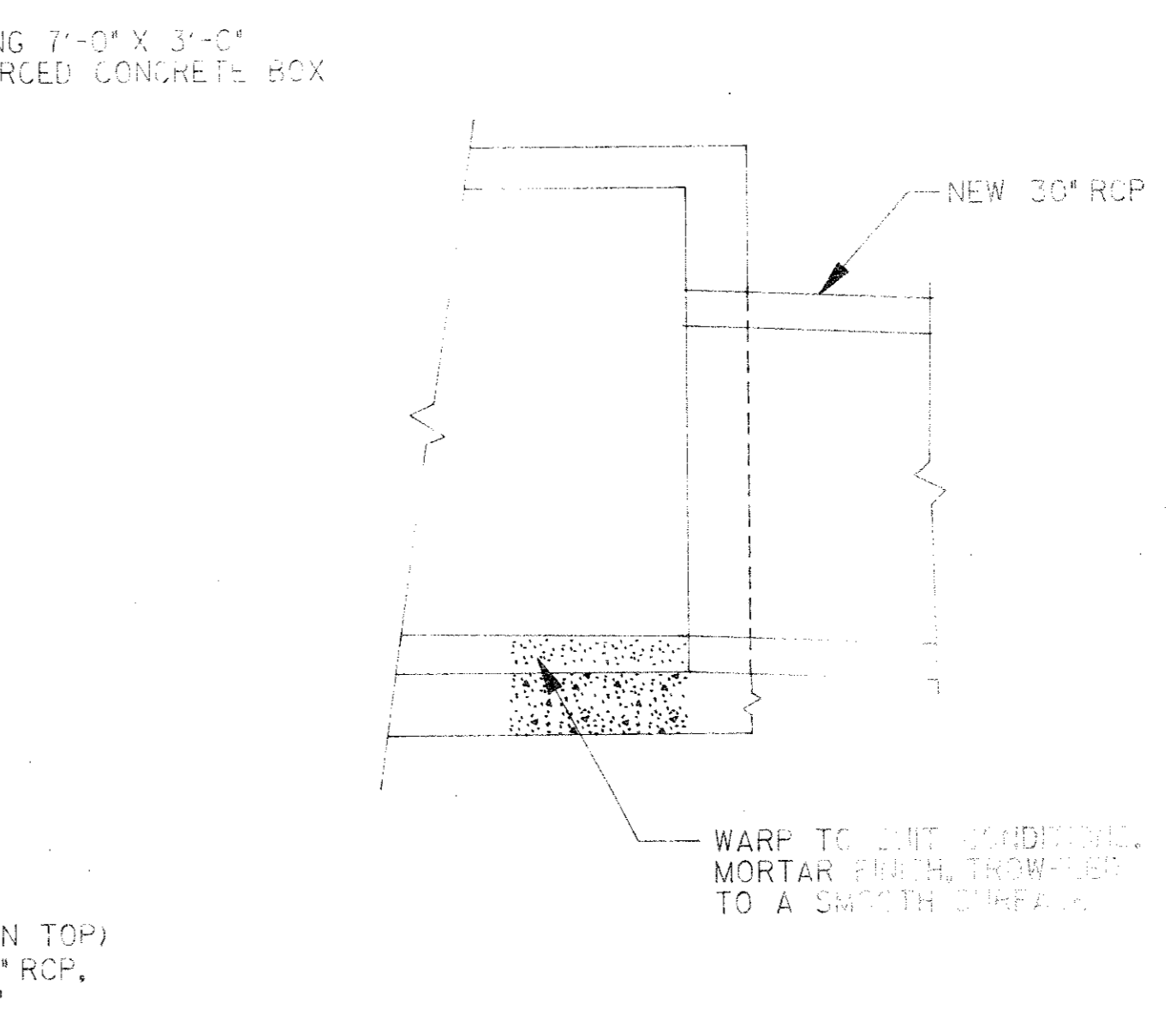
SECTION @ CULVERT
SCALE: 3/4" = 1'-0"



DETAIL @ CULVERT
SCALE: 3/4" = 1'-0"



SECTION
SCALE: 3/4" = 1'-0"



SECTION
SCALE: 3/4" = 1'-0"

NOTE:
 REMOVE 24" RCP, CHIP OUT SUFFICIENT CONCRETE TO ACCEPT 30" RCP (CHIP CONCRETE FROM BOTTOM RATHER THAN TOP). CUT REBAR BACK TO 2" FROM NEW 30" RCP. POUR CONCRETE COLLAR EXTENDING 6" MINIMUM PAST EDGE OF CHIPPED CONCRETE. VIBRATE SUFFICIENTLY TO FILL ALL VOIDS.

The Benham Group
 Dallas
 architects
 engineers
 planners
 1341 W. Mockingbird Ln.
 Suite 517
 Dallas, Texas



no. _____ date _____