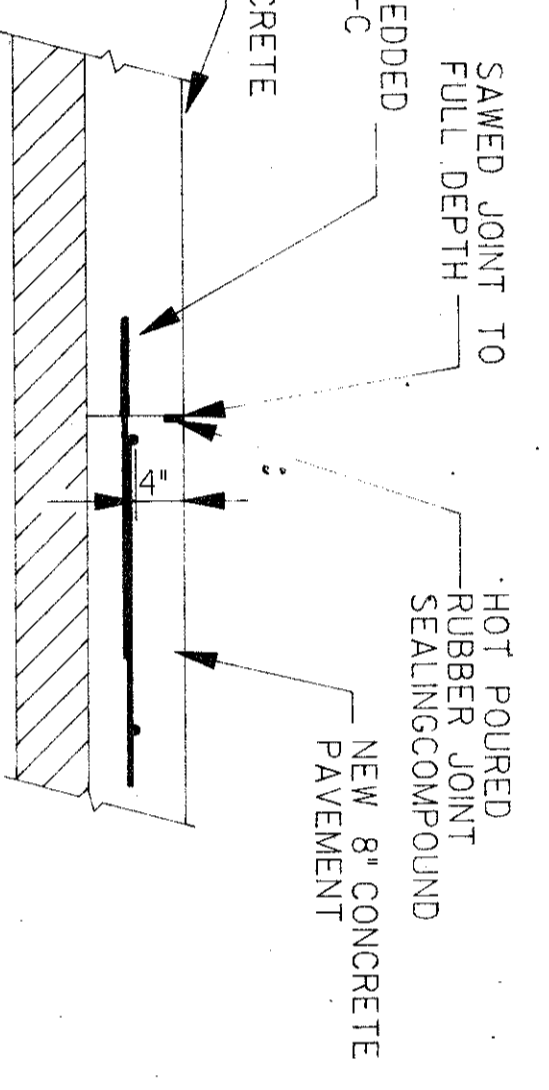
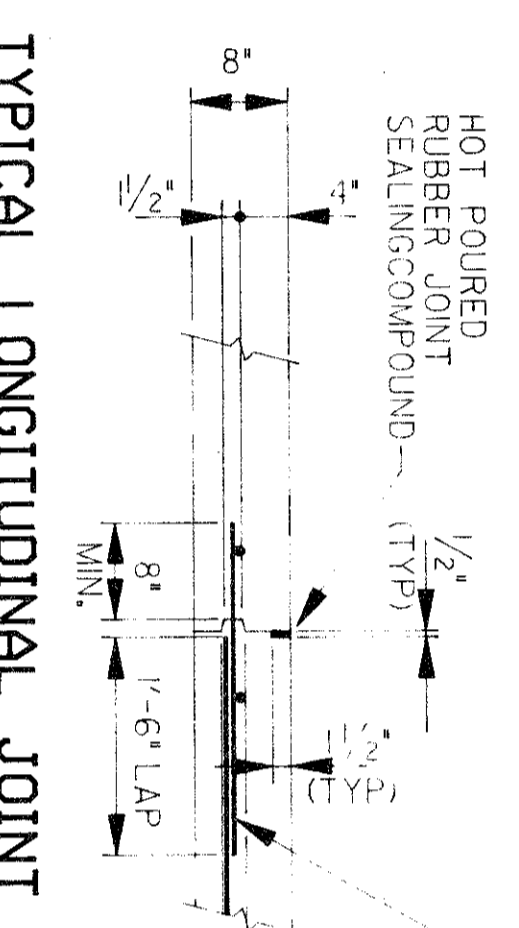


TURNING LANE DETAILS



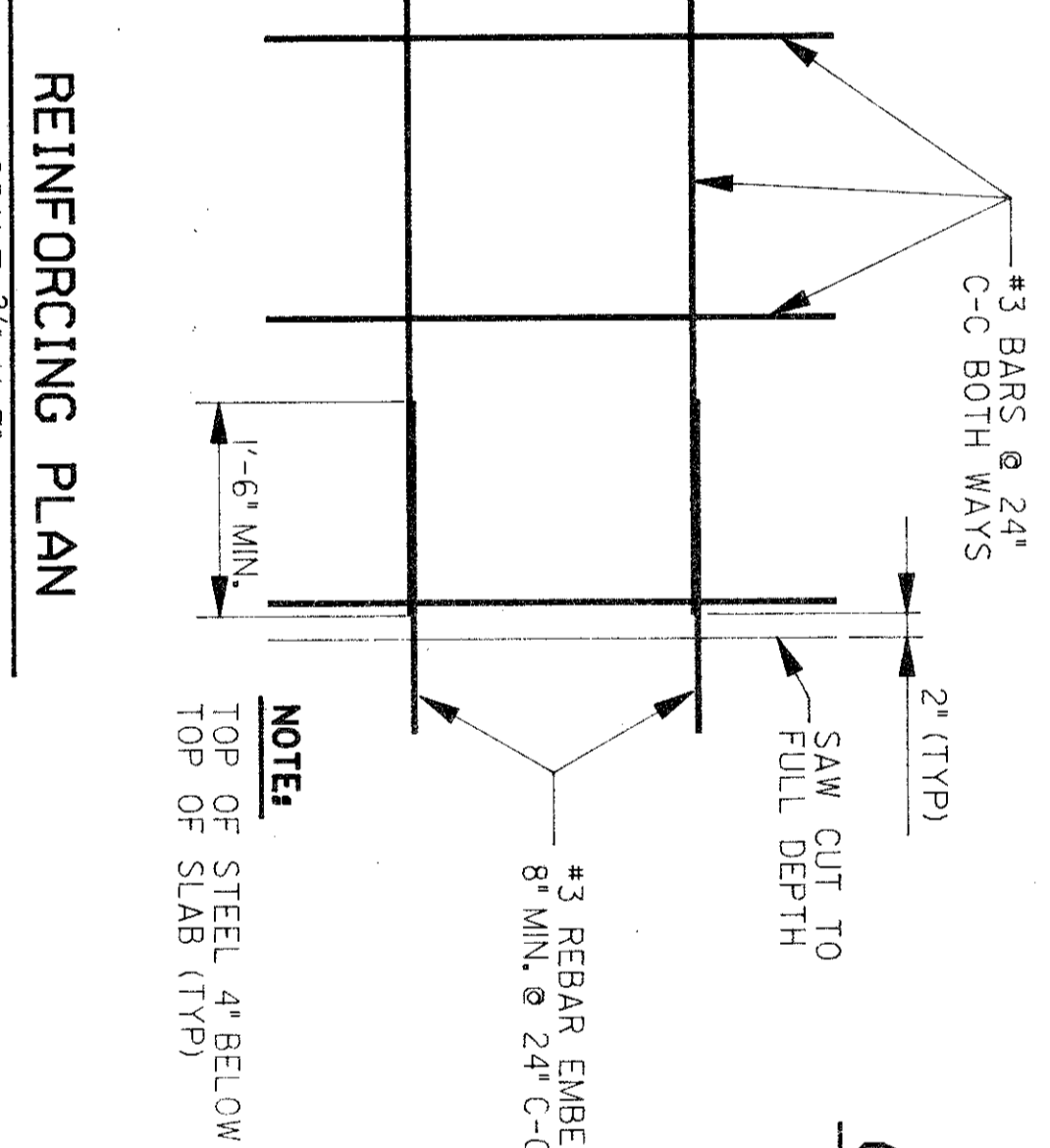
TYPICAL LONGITUDINAL JOINT DETAIL
ABUTTING OLD PAVEMENT

SCALE: 3/4"=1'-0"



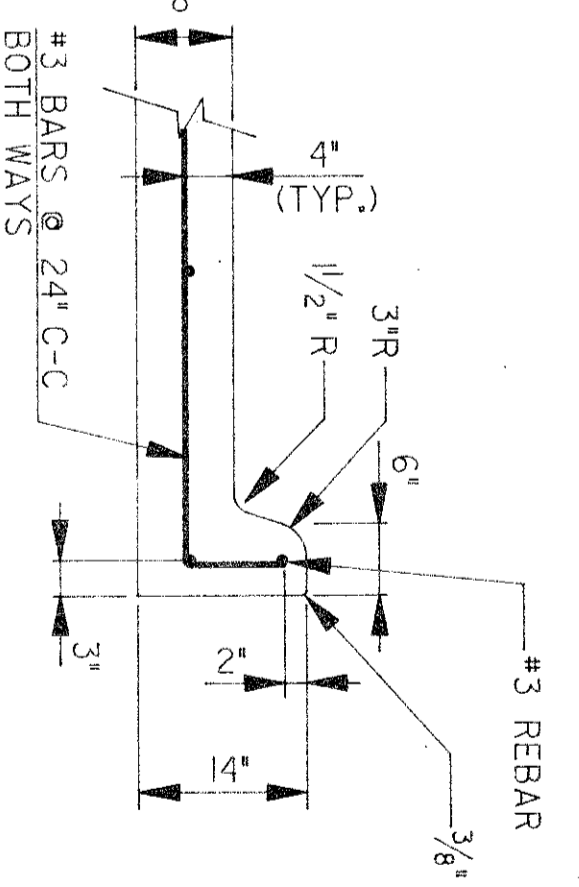
TYPICAL LONGITUDINAL JOINT DETAIL
NEW PAVEMENT

SCALE: 3/4"=1'-0"



REINFORCING PLAN

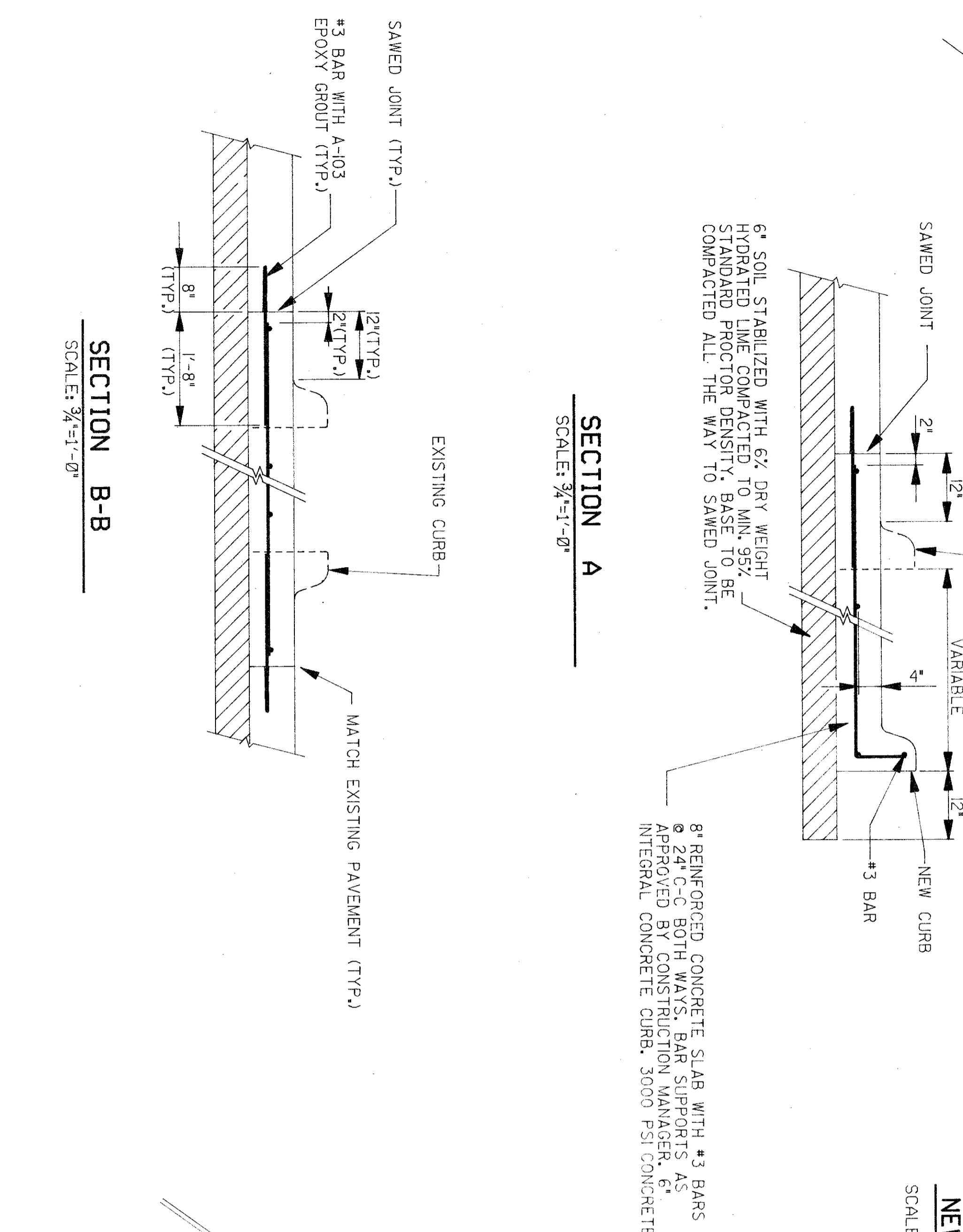
SCALE: 3/4"=1'-0"



6" INTEGRAL CURB DETAIL

SCALE: 3/4"=1'-0"

IF THEY OCCUR DURING CONSTRUCTION, EXISTING CEMENTED HEADERS WITH SLICK DOWELS (RELEASE ONE END AND CAPS).

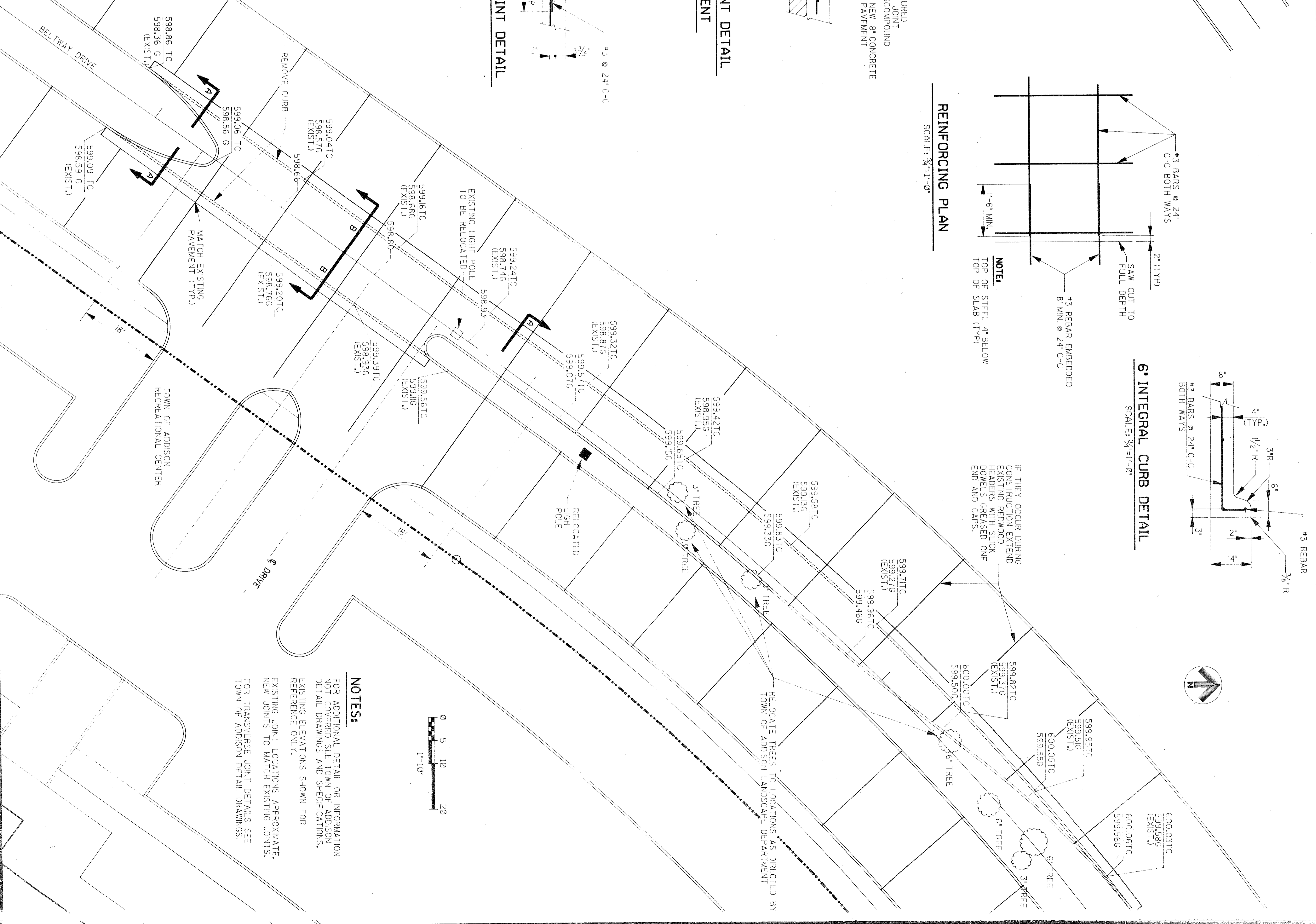


SECTION A

SCALE: 3/4"=1'-0"

SECTION B-B

SCALE: 3/4"=1'-0"



NOTES:

FOR ADDITIONAL DETAIL OR INFORMATION NOT COVERED SEE TOWN OF ADDISON DETAIL DRAWINGS AND SPECIFICATIONS. EXISTING ELEVATIONS SHOWN FOR REFERENCE ONLY.
EXISTING JOINT LOCATIONS APPROXIMATE. NEW JOINTS TO MATCH EXISTING JOINTS. FOR TRANSVERSE JOINT DETAILS SEE TOWN OF ADDISON DETAIL DRAWINGS.

The Benhar Group
 architects
 engineers
 planners
 1341 W. Modugno
 Suite 517 e
 Dallas, Texas

Sheet Title: Median Curb & Turning Lane
 Date: 10-20-2020
 Drawn: [Signature]
 Checked: [Signature]
 Date: [Signature]
 Revision: [Signature]
 No. [Signature]
 Date: [Signature]

REVISED PLANS - A.A.C. Median Curb.

COMPOSITE

NO.	DATE	DESCRIPTION