

CAUTION !!!  
4" Gas Main

Const. Two Inlets  
w/21" Laterals. See  
Architect Plans for  
Tops & Flowlines of  
Inlets.

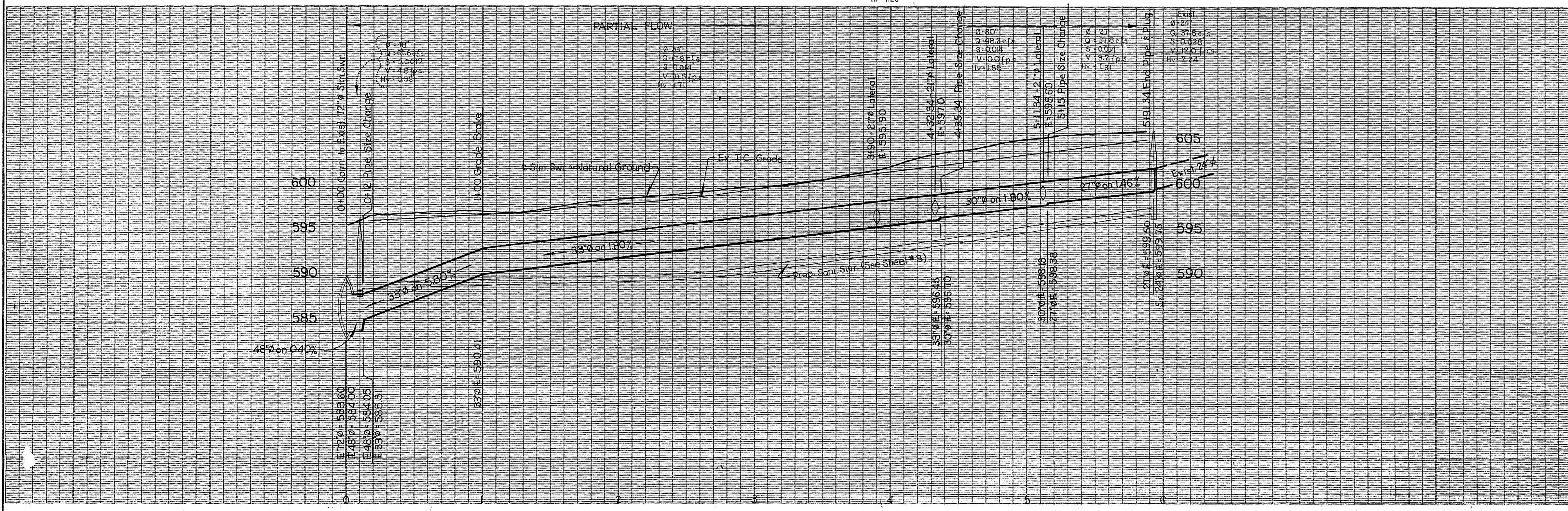
CAUTION !!!  
2" Gas Main

10" Rec. Inlet  
Top to Match Exist. Pavement  
E = 597.00  
21" Lateral

CAUTION !!! Underground telephone cable and gas main in R.O.W. Exact location unknown. Prior to beginning construction, contact Mr. Roy Derr of Southwestern Bell Telephone Co. (Phone #464-7766) and Mr. Harris of Lone Star Gas Co. (Phone #242-4231)

$\phi = .33"$   
Q = 53.2 cfs  
S = 0.010  
V = 9.0 f.p.s.  
Hv = 1.26

B.M.  
"□" on top of inlet on the East side of  
Surveyor and 30' South of Belt Line  
Elev. 596.46



STORM SEWER PLAN						
SURVEYOR BLVD.						
ADDISON, DALLAS COUNTY, TEXAS						
Don A. Tipton, Inc.			Consulting Engineers			
13600 L.B.J. Freeway			Garland, Texas 75041			
DESIGN	DRAWN	DATE	SCALE	NOTES	FILE	NO.
D.A.T., Inc.	q.d.	April 1982	H: 1" = 40' V: 1" = 6'	d.b.		5 / 5