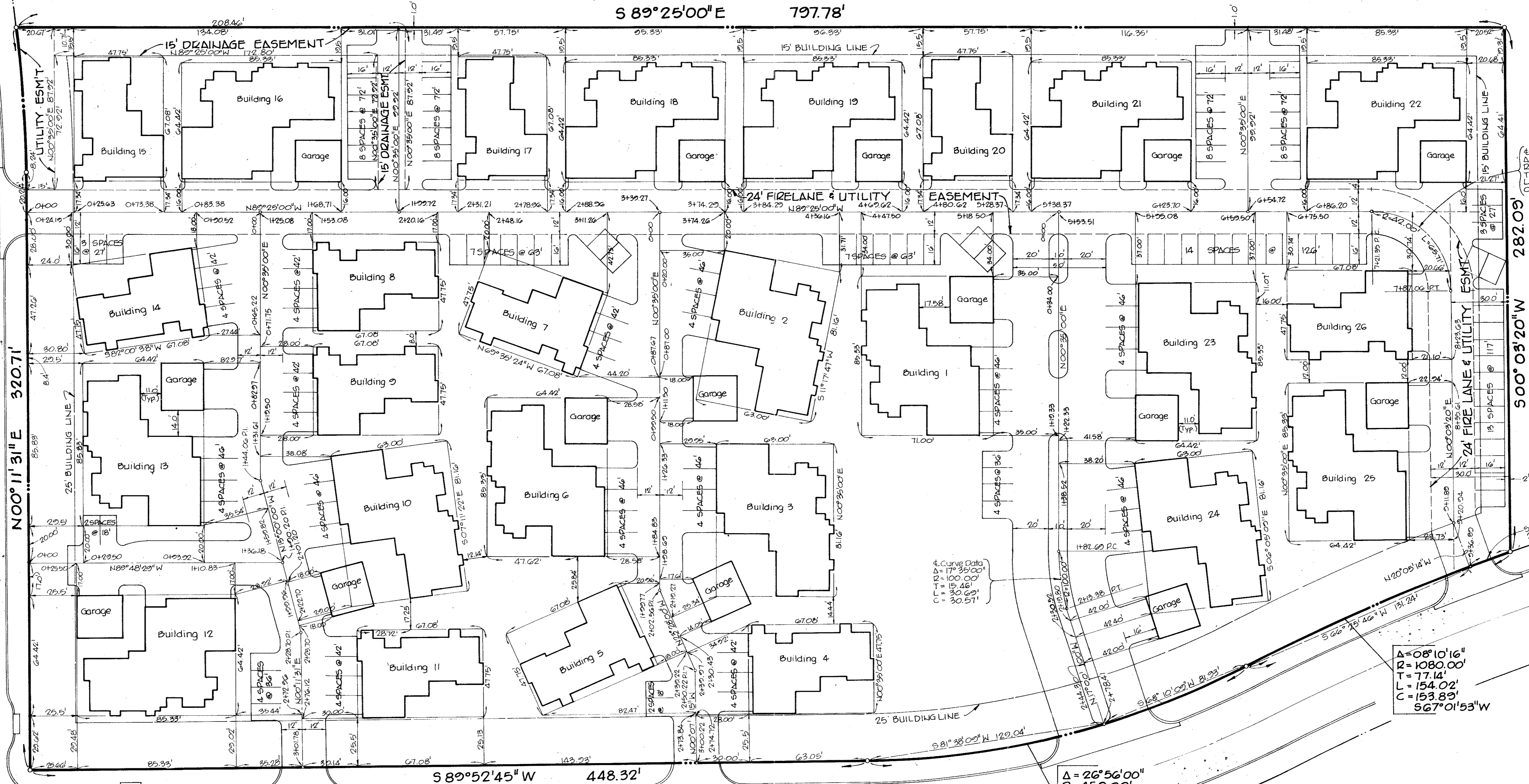




$\Delta = 07^{\circ}16'10''$   
 $R = 630.00'$   
 $T = 40.02'$   
 $L = 79.93'$   
 $C = 79.88'$   
 $N 03^{\circ}26'34'' W$

**SURVEYOR BOULEVARD**

(CONC. P.V.M.T. 31' B-B)



4 Curve Data  
 $\Delta = 50^{\circ}58'20''$   
 $R = 42.00'$   
 $T = 41.74'$   
 $L = 69.71'$   
 $C = 59.21'$

4 Curve Data  
 $\Delta = 08^{\circ}10'16''$   
 $R = 1080.00'$   
 $T = 77.14'$   
 $L = 154.02'$   
 $C = 153.89'$   
 $S 67^{\circ}01'53'' W$

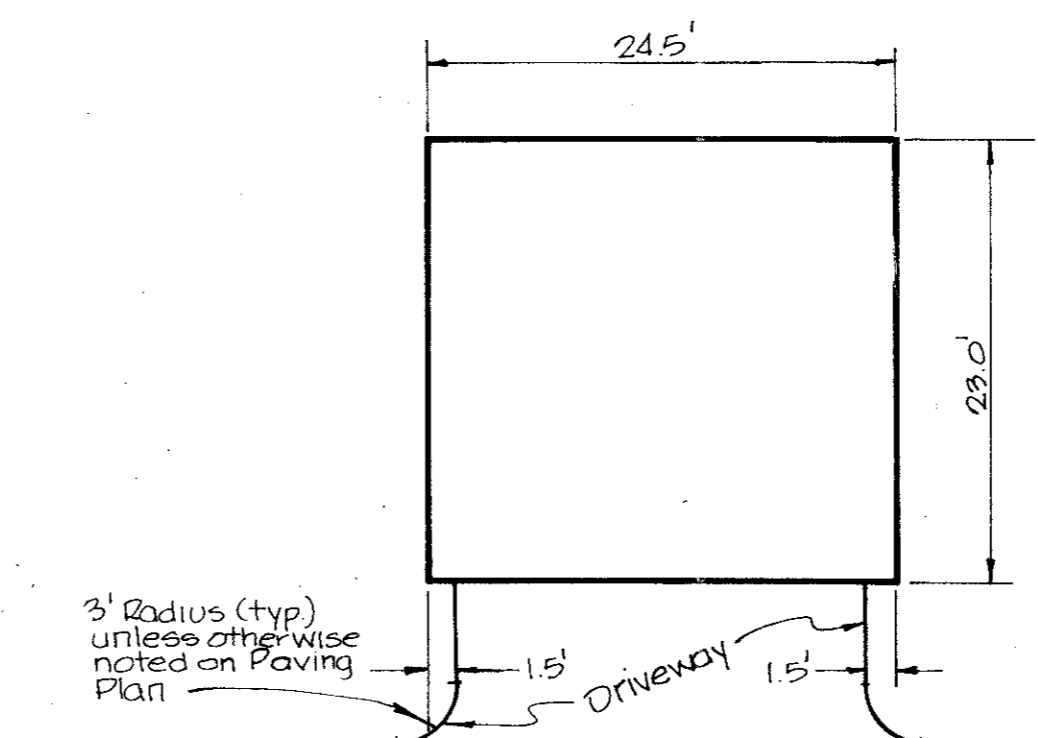
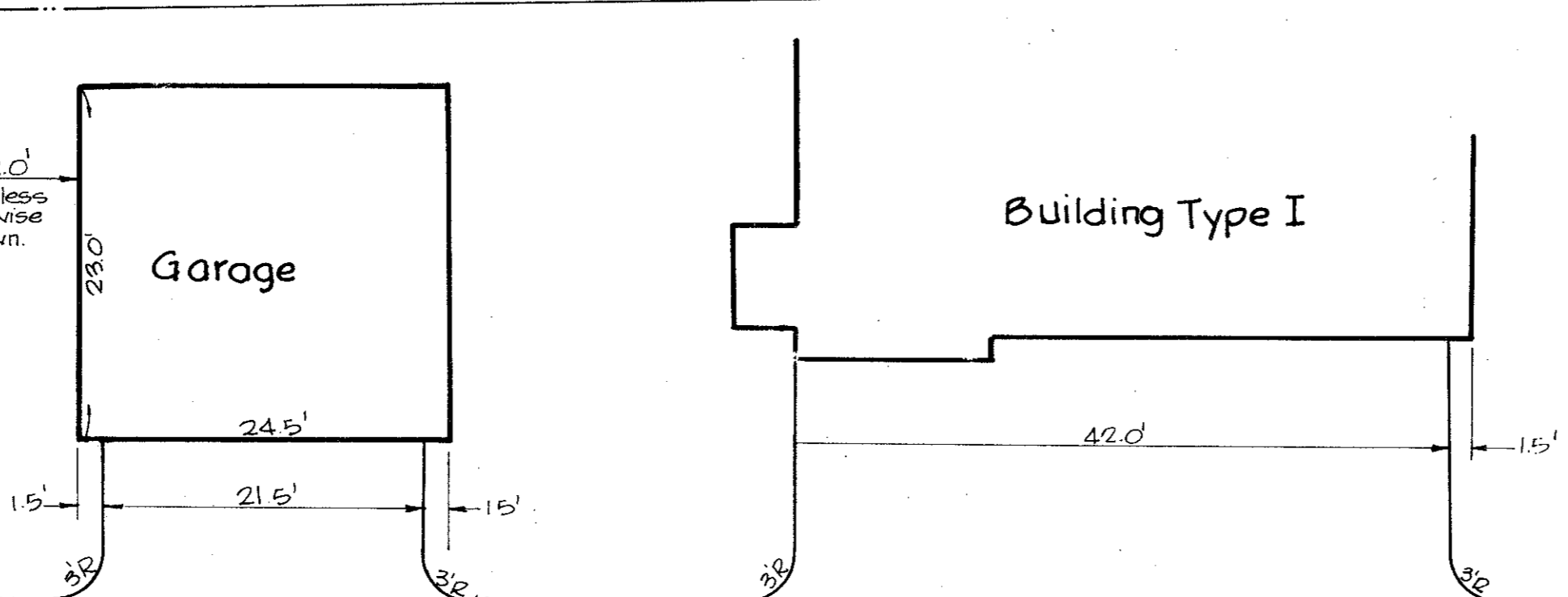
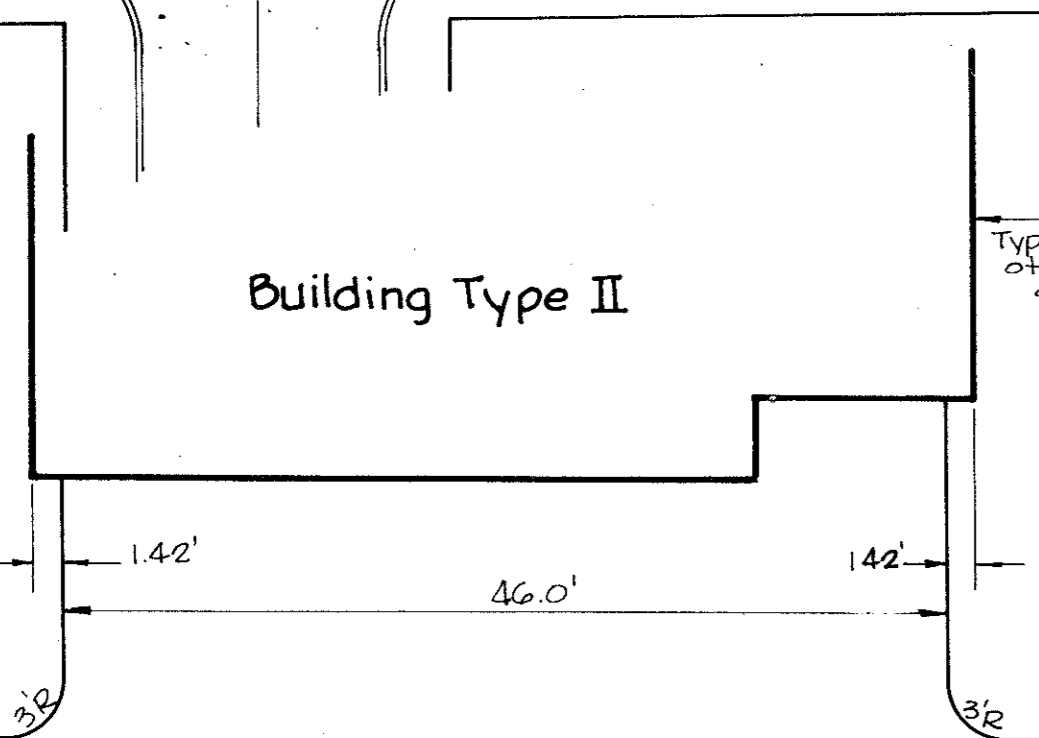
4 Curve Data  
 $\Delta = 26^{\circ}56'00''$   
 $R = 450.00'$   
 $T = 107.76'$   
 $L = 211.53'$   
 $C = 209.59'$   
 $S 76^{\circ}24'45'' W$

**BELTWAY DRIVE**

(CONC. P.V.M.T. 31' B-B)

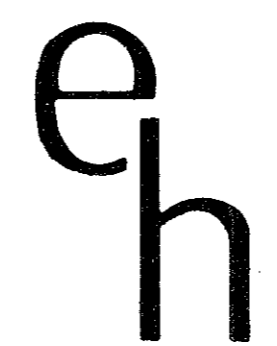
**GENERAL NOTES**

1. All pavement dimensions are to face of curb.
2. All curb radii are shown on Paving Plan.
3. All building ties are 90° to the centerline.



NO.	REVISION	BY	DATE

DESIGNED BY: \_\_\_\_\_  
 DRAWN BY: \_\_\_\_\_  
 CHECKED BY: \_\_\_\_\_  
 SCALE: 1" = 30'  
 DATE: \_\_\_\_\_


**ESPEY, HUSTON & ASSOCIATES, INC.**  
 Engineering & Environmental Consultants  
 P. O. Box 402305, Dallas, TX 75240  
 (214)669-9600

**DIMENSIONAL CONTROL**  
**PECAN SQUARE CONDOMINIUMS**  
 CITY OF ADDISON, DALLAS COUNTY, TEXAS  
 FOR  
**PECAN SQUARE JOINT VENTURE**

SHEET NO. **2**  
 OF SHEETS  
 JOB NO. **2201**