

NOTES

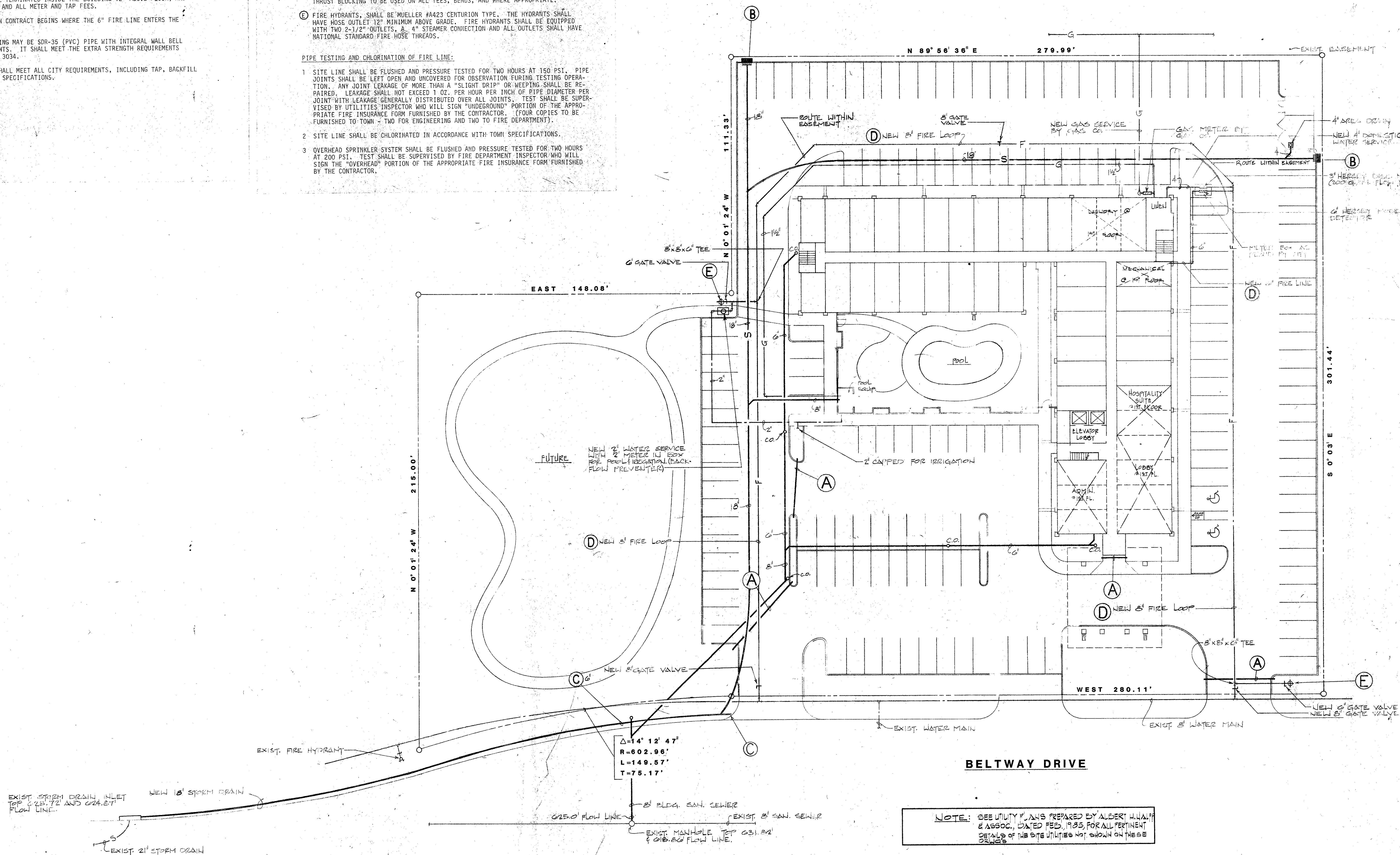
1. WATER METERS AND BACKFLOW PREVENTORS SHALL BE INSTALLED IN CONCRETE BOXES AS PER CITY SPECIFICATIONS.
2. PLUMBING CONTRACTOR MAY AT HIS OPTION PROVIDE ONE COMPOUND METER IN LIEU OF THE TWO METERS SHOWN SIDE BY SIDE.
3. PLUMBING CONTRACTOR SHALL INCLUDE ALL OUTSIDE PIPING (INCLUDING THE FIRE LINE TO BE TERMINATED INSIDE THE BUILDING 12" ABOVE FLOOR, AND FIRE HYDRANTS) AND ALL METER AND TAP FEES.
4. FIRE PROTECTION CONTRACT BEGINS WHERE THE 6" FIRE LINE ENTERS THE BUILDING.
5. SITE SEWER PIPING MAY BE SDR-35 (PVC) PIPE WITH INTEGRAL HALL BELL AND SPIGOT JOINTS. IT SHALL MEET THE EXTRA STRENGTH REQUIREMENTS OF ASTM SPEC D 3034.
6. SEWER PIPING SHALL MEET ALL CITY REQUIREMENTS, INCLUDING TAP, BACKFILL AND INSPECTION SPECIFICATIONS.

LEGEND

- (A) 4" PVC (SCHEDULE 40) CONDUIT FOR IRRIGATION PIPE
- (B) COMBINATION CLIP BY GEN. CONTRACTOR
- (C) PLUGGED CONNECTION FOR FUTURE, SIZE SHOWN
- (D) SITE FIRE LINE TO BE POLYVINYL CHLORIDE SDR-18 (PVC) PIPE. FITTINGS SHALL BE MUELLER BRAND OR EQUAL AS APPROVED BY FIRE MARSHAL. LINE TO BE SAND ENCASED (6" ALL AROUND), 42" MINIMUM COVER AND COMPACTED BACKFILL. CONCRETE THRUST BLOCKING TO BE USED ON ALL TEES, BENDS, AND WHERE APPROPRIATE.
- (E) FIRE HYDRANTS SHALL BE MUELLER #A423 CENTURION TYPE. THE HYDRANTS SHALL HAVE HOSE OUTLET 12" MINIMUM ABOVE GRADE. FIRE HYDRANTS SHALL BE EQUIPPED WITH TWO 2-1/2" OUTLETS. A 4" STEAMER CONNECTION AND ALL OUTLETS SHALL HAVE NATIONAL STANDARD FIRE HOSE THREADS.

PIPE TESTING AND CHLORINATION OF FIRE LINE:

1. SITE LINE SHALL BE FLUSHED AND PRESSURE TESTED FOR TWO HOURS AT 150 PSI. PIPE JOINTS SHALL BE LEFT OPEN AND UNCOVERED FOR OBSERVATION DURING TESTING OPERATION. ANY JOINT LEAKAGE OF MORE THAN A "SLIGHT DRIP" OR WEEPING SHALL BE REPAIRED. LEAKAGE SHALL NOT EXCEED 1 OZ. PER HOUR PER INCH OF PIPE DIAMETER PER JOINT WITH LEAKAGE GENERALLY DISTRIBUTED OVER ALL JOINTS. TEST SHALL BE SUPERVISED BY UTILITIES INSPECTOR WHO WILL SIGN "UNDERGROUND" PORTION OF THE APPROPRIATE FIRE INSURANCE FORM FURNISHED BY THE CONTRACTOR. (FOUR COPIES TO BE FURNISHED TO TOWN - TWO FOR ENGINEERING AND TWO TO FIRE DEPARTMENT).
2. SITE LINE SHALL BE CHLORINATED IN ACCORDANCE WITH TOWN SPECIFICATIONS.
3. OVERHEAD SPRINKLER SYSTEM SHALL BE FLUSHED AND PRESSURE TESTED FOR TWO HOURS AT 200 PSI. TEST SHALL BE SUPERVISED BY FIRE DEPARTMENT INSPECTOR WHO WILL SIGN THE "OVERHEAD" PORTION OF THE APPROPRIATE FIRE INSURANCE FORM FURNISHED BY THE CONTRACTOR.



NOTE: SEE UTILITY PLANS PREPARED BY ALBERT W. HALL & ASSOC., DATED FEB. 1985, FOR ALL PERTINENT DETAILS OF THE SITE UTILITIES NOT SHOWN ON THESE SHEETS.