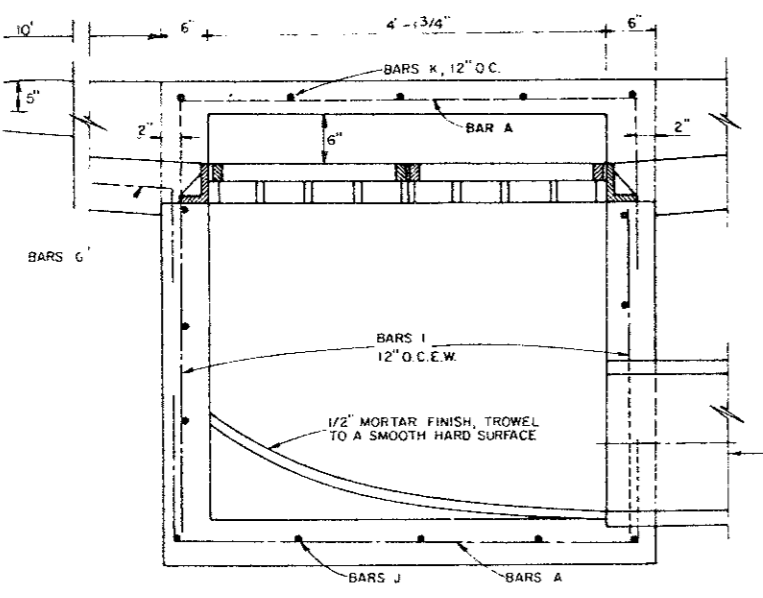
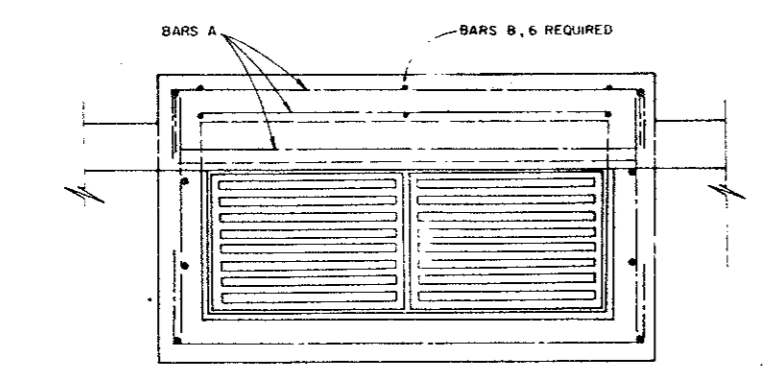
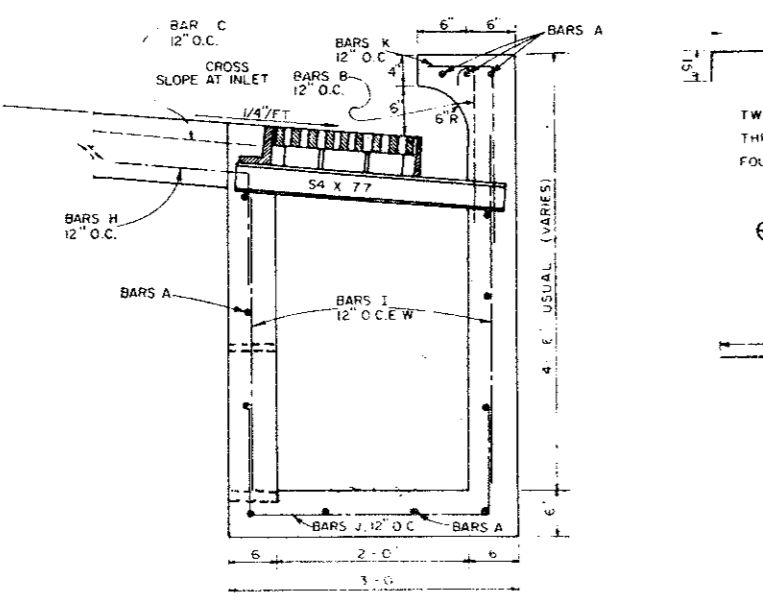


CAUTION!!!  
LONE STAR GAS  
LINE IN THIS AREA



TWO GRATE INLET



COMBINATION INLET DETAIL  
NO SCALE

NOTE:  
POWER POLES MAY NEED TO BE  
BRACED OR RELOCATED PRIOR  
TO UTILITY CONSTRUCTION.  
(AT CONTRACTOR'S EXPENSE)

NOTE:  
CONTRACTOR TO VERIFY LOCATION OF ALL  
UTILITIES PRIOR TO CONSTRUCTION.

B.M.  
"D" ON T.C. AT THE CENTER OF A RADIUS  
AT THE NORTH SIDE OF THE WEST DRIVE  
INTO FIRE STATION, 4500 BLK. BELT LINE  
ROAD.  
ELEV 629.33

B.M.  
"D" ON T.C. NORTH SIDE OF BELTWAY DR.  
IN FRONT OF F.H. AT SOUTHWEST CORNER  
OF TRACT  
ELEV 628.9

Remove & Relocate Fire Hydrant  
to clear 18" Storm Sewer Pipe

$\Delta = 16^{\circ}56'57''$   
 $R = 594.96'$   
 $T = 88.65'$   
 $L = 176.00'$

Install Double Cleanout

CAUTION!!!  
Water Line Crossing  
Contractor To Verify Exact  
Location and Elev. of Water Pipe  
prior to Construction

$\Delta = 01^{\circ}36'57''$   
 $R = 602.96'$   
 $T = 8.50'$   
 $L = 17.01'$   
(60'R.O.W.)

INSTALL:  
4.8' x 45" BEND W/VERTICAL  
TIE DOWN BLOCKING.  
USE RETAINER GLANDS TO  
RESTRAIN BEND FROM  
BLOWING OUT.

NOTE: LOWER WATER LINE AS  
REQUIRED. SEE PROFILE  
SHEET FOR DETAIL.

NOTE: LOWER WATER LINE AS  
REQUIRED. SEE PROFILE  
SHEET FOR DETAIL.

NOTE: CONTACT LONE STAR GAS  
COMPANY 48 HOURS PRIOR  
TO CONSTRUCTION. 931-3350  
Ext. 33

NOTE: CONTACT TEXAS POWER  
AND LIGHT CO. 48 HOURS PRIOR  
TO CONSTRUCTION.

CONTRACTOR TO BORE  
UNDER BELTWAY DRIVE TO  
SANITARY SEWER M.H. VERIFY  
EXACT LOCATION OF CONNECTION  
POINT.

DRAINAGE CALCULATIONS					
NO. #	C	I	ACRES	Q CFS	
1	0.9	7.5	0.89	6.0	
2	0.9	7.5	0.33	2.2	
3	0.9	7.5	0.44	3.0	
4	0.9	7.5	0.35	2.4	

Utilities shown tied to exist, property lines & Referenced to the 1/4" corners  
Field ties from Survey Performed 12/11/85

*Signature*  
12/17/85

AS-BUILT  
UTILITY PLAN  
HAMPTON INN HOTEL  
FOR  
FOXHILL HOLDING COMPANY, INC.  
IN THE  
CITY OF ADDISON, TEXAS

BY  
ALBERT H. HALFF ASSOCIATES INC. - ENGINEERS  
SCALE 1" = 20' A.V.D. 8001 FEB., 1985

TELEPHONE POST