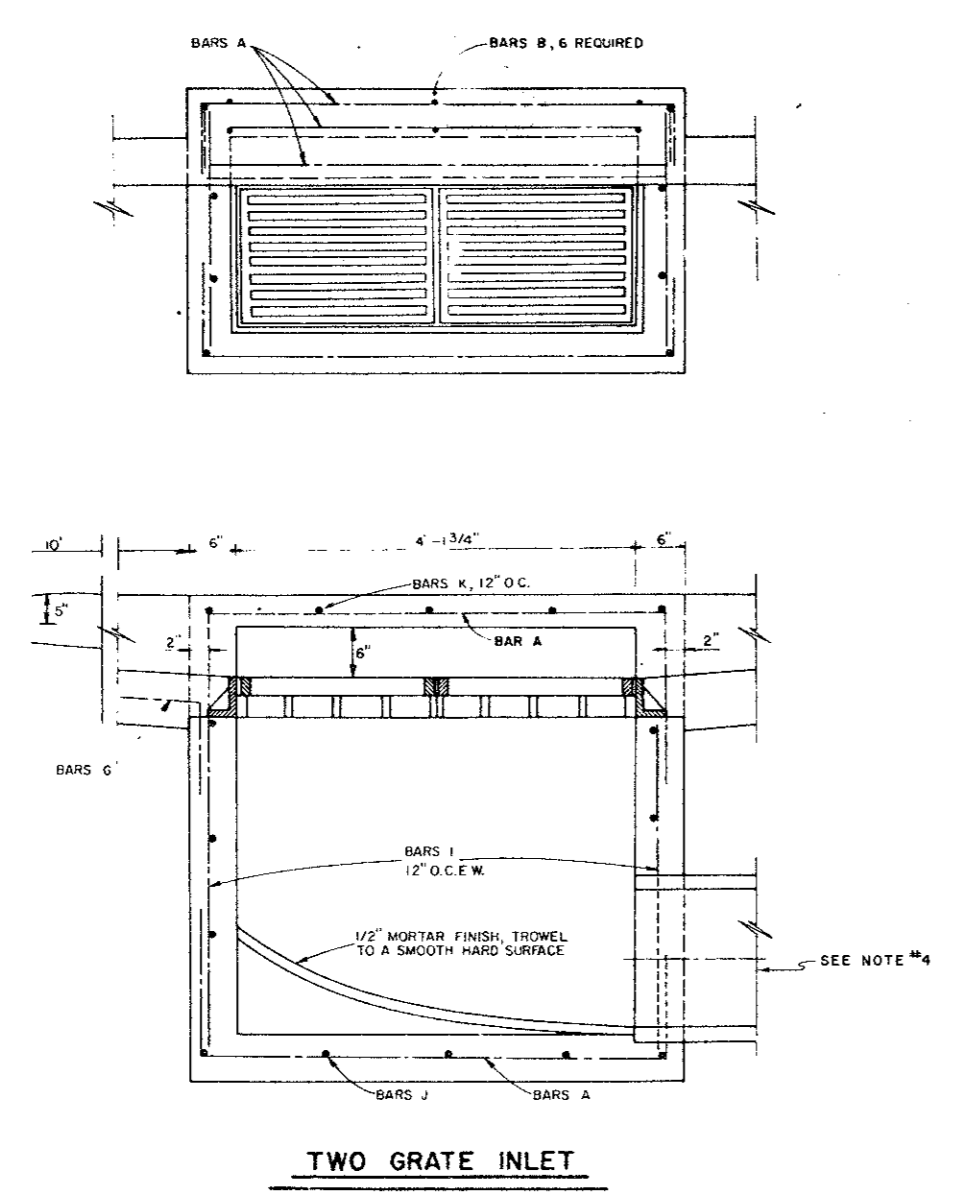
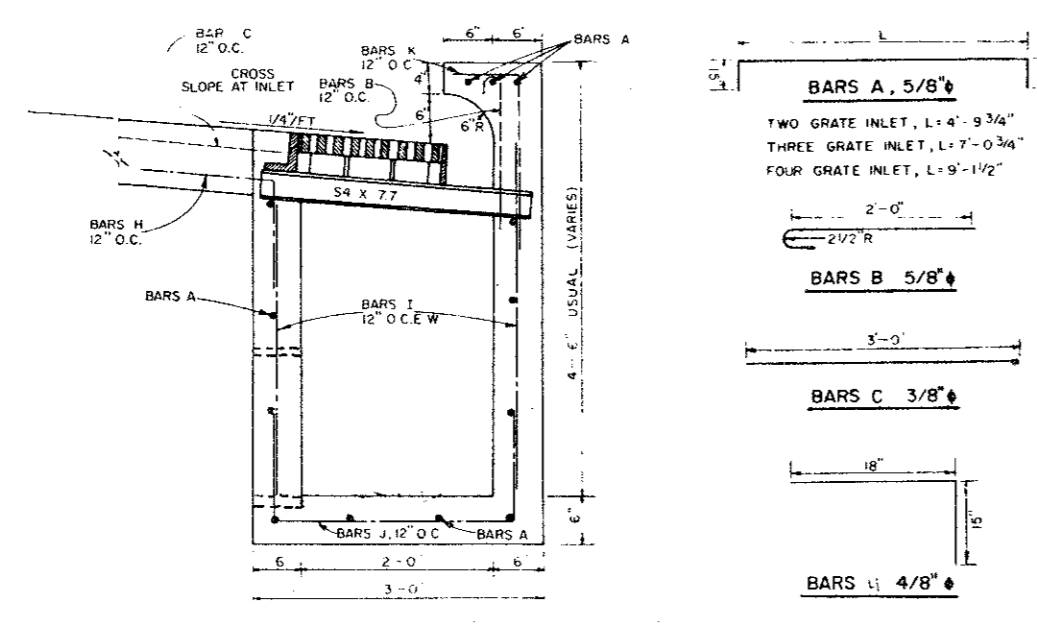


CAUTION!!!
LONE STAR GAS
LINE IN THIS AREA



TWO GRATE INLET



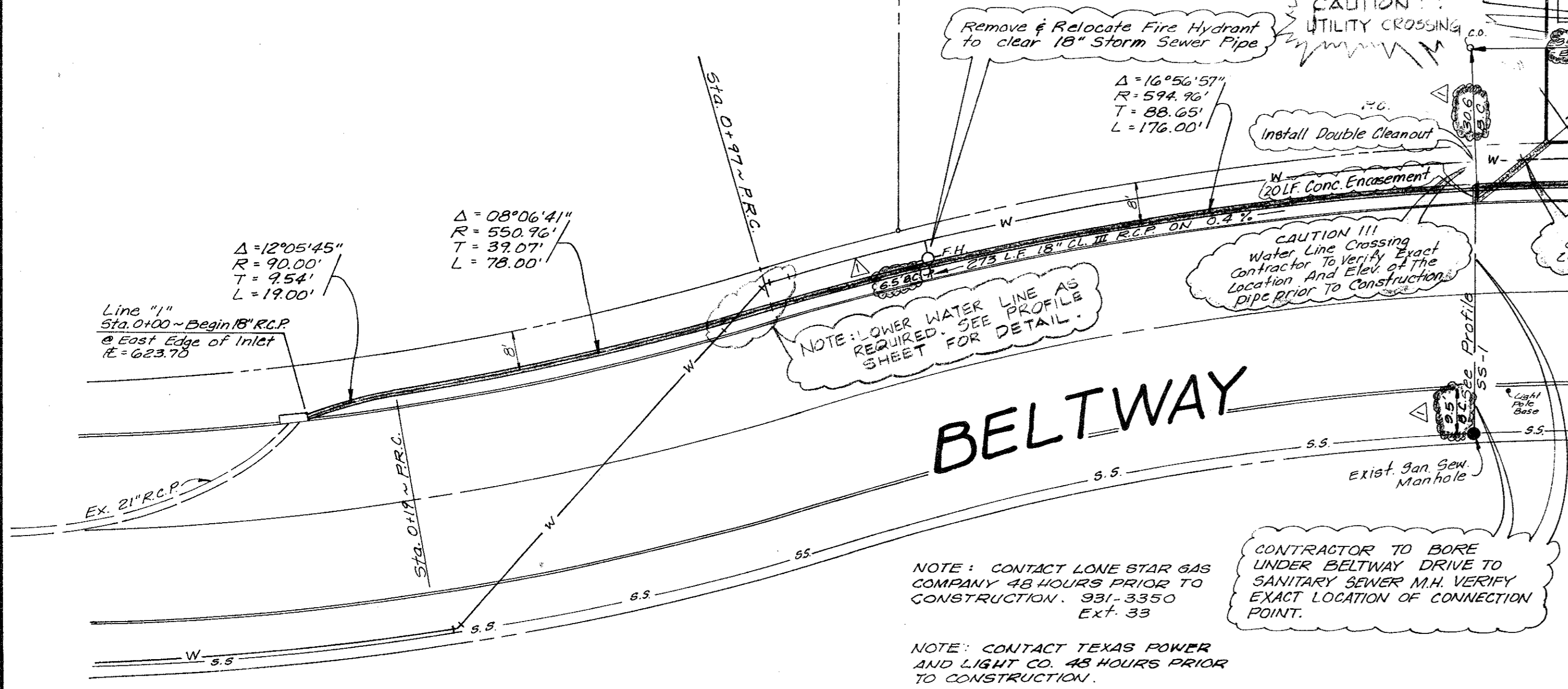
COMBINATION INLET DETAIL
NO SCALE

NOTE:
POWER POLES MAY NEED TO BE
BRACED OR RELOCATED PRIOR
TO UTILITY CONSTRUCTION.
(AT CONTRACTORS EXPENSE)

NOTE:
CONTRACTOR TO VERIFY LOCATION OF ALL
UTILITIES PRIOR TO CONSTRUCTION.

B.M.
"17" ON T.C. AT THE CENTER OF A RADIUS
AT THE NORTH SIDE OF THE WEST DRIVE
INTO FIRE STATION, 4500 BLK. BELT LINE
ROAD. ELEV. 629.33

B.M.
"10" ON T.C. NORTH SIDE OF BELTWAY DR.
IN FRONT OF F.H. AT SOUTHWEST CORNER
OF TRACT. ELEV. 628.9



DRAINAGE CALCULATIONS

NO. #	C	I	Δ ACRES	Q cfs
1	0.9	7.5	0.89	6.0
2	0.9	7.5	0.33	2.2
3	0.9	7.5	0.44	3.0
4	0.9	7.5	0.35	2.4

NOTE: CONTACT LONE STAR GAS
COMPANY 48 HOURS PRIOR TO
CONSTRUCTION. 931-3350
EXT. 33

NOTE: CONTACT TEXAS POWER
AND LIGHT CO. 48 HOURS PRIOR
TO CONSTRUCTION.

**CONTRACTOR TO BORE
UNDER BELTWAY DRIVE TO
SANITARY SEWER M.H. VERIFY
EXACT LOCATION OF CONNECTION
POINT.**

Utilities shown tied to exist. property lines & referenced to the 6th corners
Field ties from Survey Performed 12/11/85

Jan Derry
12/12/85

**AS-BUILT
UTILITY PLAN**
HAMPTON INN HOTEL
FOR
FOXHILL HOLDING COMPANY, INC.
IN THE
CITY OF ADDISON, TEXAS
BY
ALBERT H. HALFF ASSOCIATES INC. - ENGINEERS
SCALE 1"=20' A.V.O. 8001 FEB., 1985