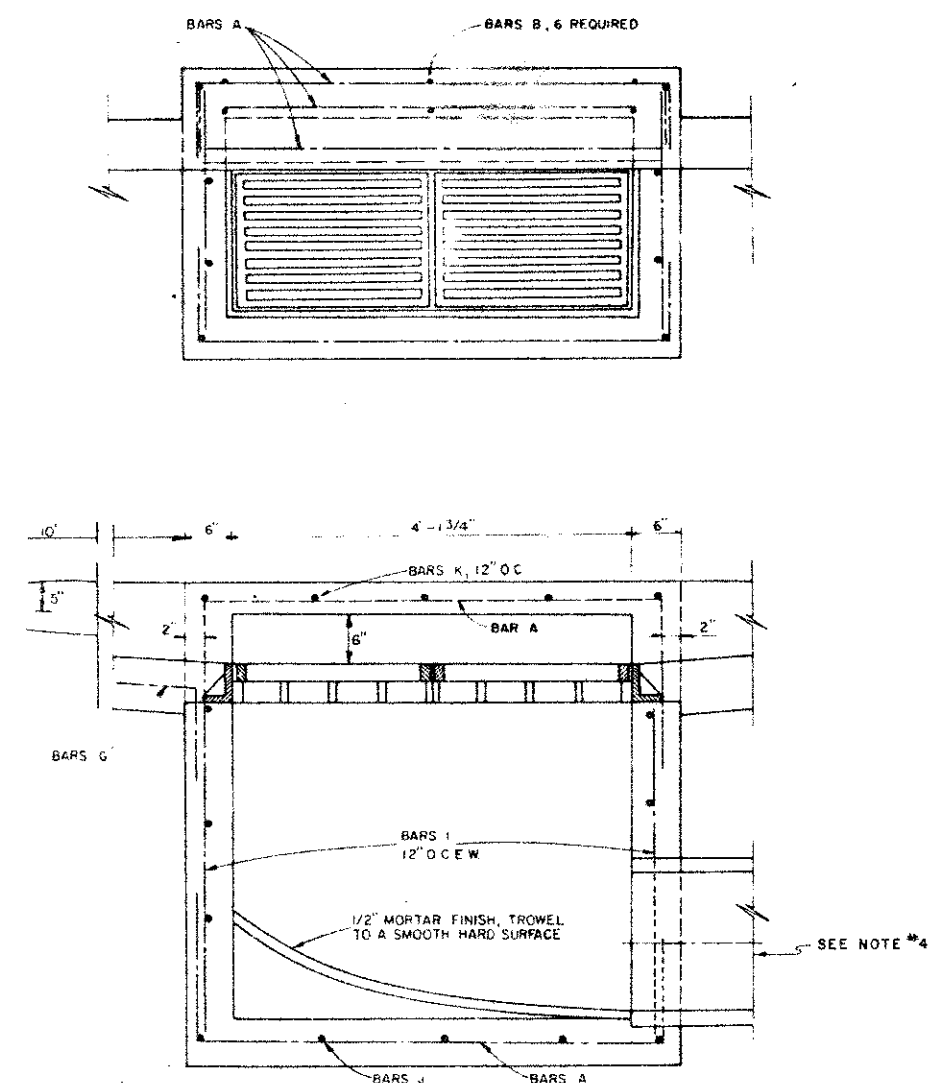
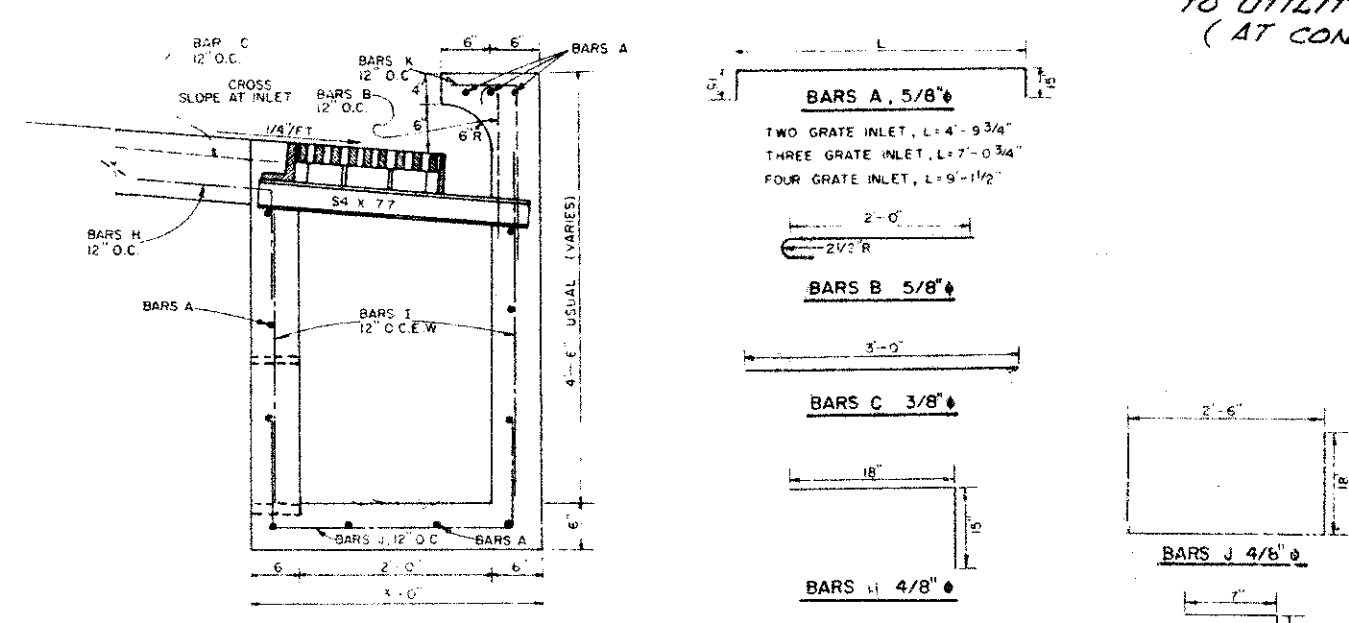


**CAUTION!!!**  
LONE STAR GAS  
LINE IN THIS AREA



TWO GRATE INLET

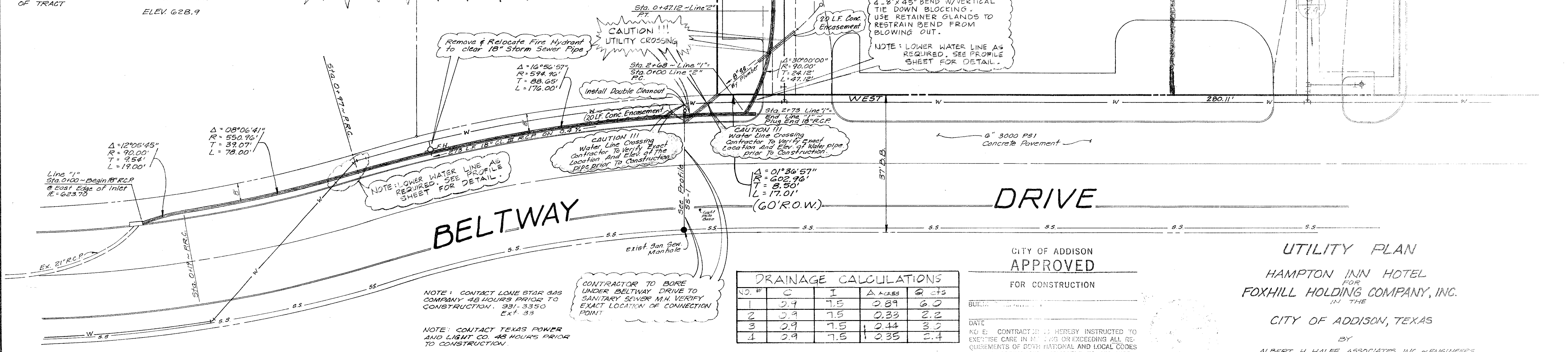


COMBINATION INLET DETAIL  
NO SCALE

B.M. "D" ON T.C. AT THE CENTER OF A RADIUS AT THE NORTH SIDE OF THE WEST DRIVE INTO FIRE STATION, 4500 BLK. BELT LINE ROAD. ELEV. 629.33

B.M. "D" ON T.C. NORTH SIDE OF BELTWAY DR. IN FRONT OF FH AT SOUTHWEST CORNER OF TRACT. ELEV. 628.9

**NOTE:** CONTRACTOR TO VERIFY LOCATION OF ALL UTILITIES PRIOR TO CONSTRUCTION.



Remove & Relocate Fire Hydrant to clear 18" Storm Sewer Pipe

**CAUTION!!!**  
UTILITY CROSSING

INSTALL: 4.8" x 45" BEND W/ VERTICAL TIE DOWN BLOCING. USE RETAINER GLANDS TO RESTRAIN BEND FROM BLOWING OUT.  
**NOTE:** LOWER WATER LINE AS REQUIRED. SEE PROFILE SHEET FOR DETAIL.

**CAUTION!!!**  
Water Line Crossing  
Contractor To Verify Exact Location And Elev. of Water Pipe Prior to Construction.

**CAUTION!!!**  
Water Line Crossing  
Contractor To Verify Exact Location And Elev. of Water Pipe Prior to Construction.

**NOTE:** LOWER WATER LINE AS REQUIRED. SEE PROFILE SHEET FOR DETAIL.

CONTRACTOR TO BORE UNDER BELTWAY DRIVE TO SANITARY SEWER M.H. VERIFY EXACT LOCATION OF CONNECTION POINT

**NOTE:** CONTACT LONE STAR GAS COMPANY 48 HOURS PRIOR TO CONSTRUCTION. 931-3350 EXT. 33

**NOTE:** CONTACT TEXAS POWER AND LIGHT CO. 48 HOURS PRIOR TO CONSTRUCTION.

DRAINAGE CALCULATIONS				
NO. #	C	I	A ACRES	Q CFS
1	0.9	7.5	0.89	6.0
2	0.9	7.5	0.33	2.2
3	0.9	7.5	0.44	3.0
4	0.9	7.5	0.35	2.4

CITY OF ADDISON  
APPROVED  
FOR CONSTRUCTION

UTILITY PLAN  
HAMPTON INN HOTEL  
FOR  
FOXHILL HOLDING COMPANY, INC.  
IN THE

CITY OF ADDISON, TEXAS

DATE: \_\_\_\_\_  
BY: \_\_\_\_\_  
NO. E: CONTRACTOR IS HEREBY INSTRUCTED TO EXERCISE CARE IN NOTING OR EXCEEDING ALL REQUIREMENTS OF BOTH NATIONAL AND LOCAL CODES AND/OR ORDINANCES APPLICABLE TO HIS WORK. APPROVAL OF THESE DRAWINGS SHALL NOT BE CONSTRUED TO RELIEVE RESPONSIBILITY OR IMPLY VARIANCE TO SUCH CODES.

ALBERT H. HALFF ASSOCIATES INC. - ENGINEERS  
SCALE 1" = 20' A.V.D. 8001 FEB., 1985