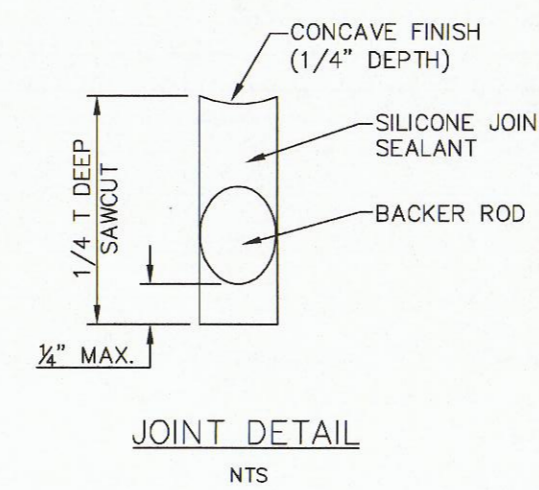
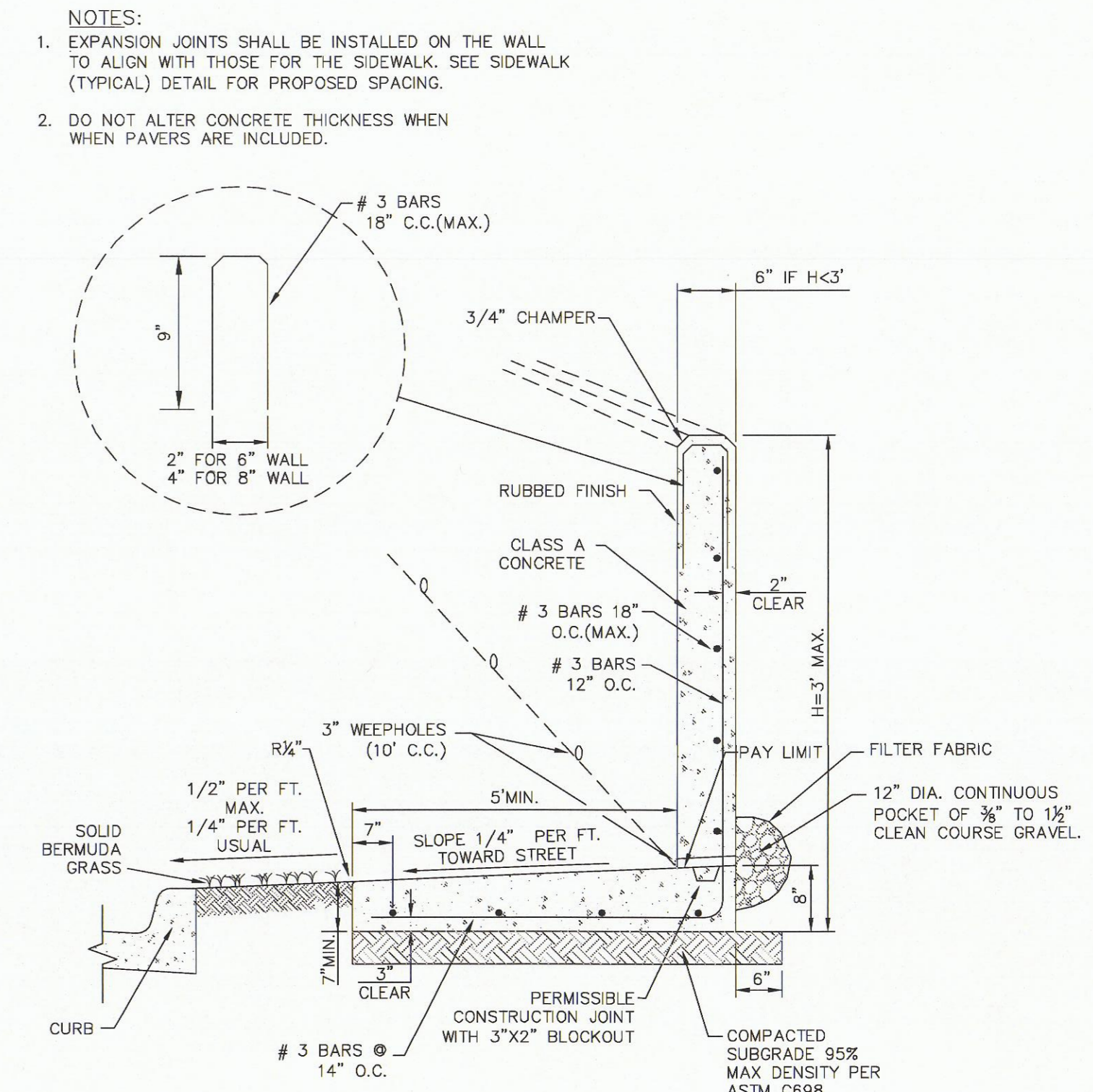


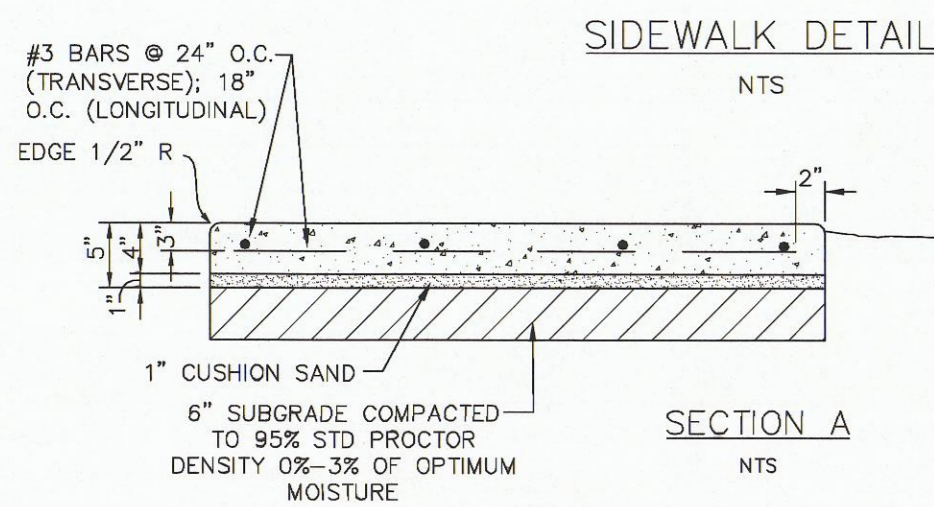
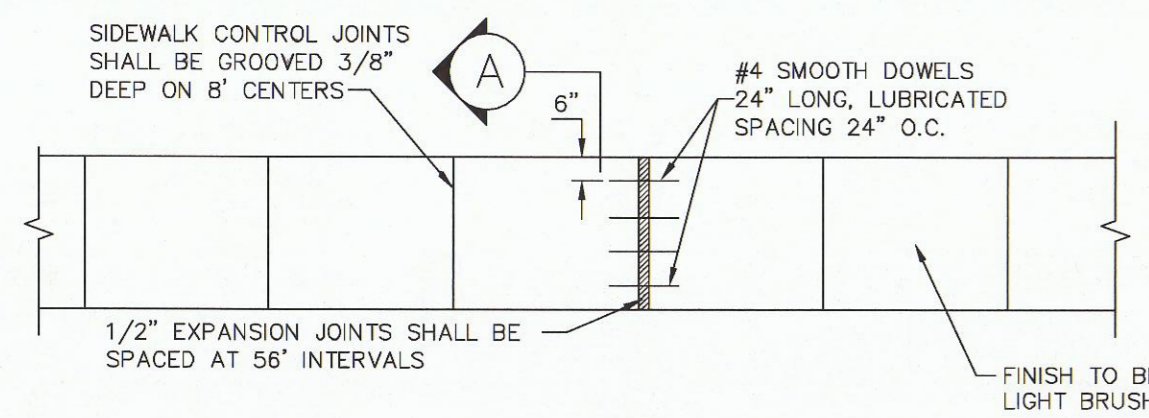
- NOTES:
- NO. 5 DEFORMED BAR MAY BE USED IN 6 INCH PAVEMENT.
 - LONGITUDINAL BUTT CONSTRUCTION MAY BE UTILIZED IN PLACE OF LONGITUDINAL HINGED (KEYWAY) JOINT AT CONTRACTOR'S OPTION.
 - DOWEL BARS SHALL BE DRILLED INTO PAVEMENT HORIZONTALLY BY USE OF A MECHANICAL RIG. DRILLING BY HAND IS NOT ACCEPTABLE. PUSHING DOWEL BARS INTO GREEN CONCRETE IS NOT ACCEPTABLE.
 - SAWCUT WATER SHALL BE VACUUMED AND DISPOSED PROPERLY.
 - NO SAWCUT SHALL BE WITHIN 30" OF AN EXISTING JOINT; OTHERWISE REMOVE PAVEMENT TO NEAREST JOINT.



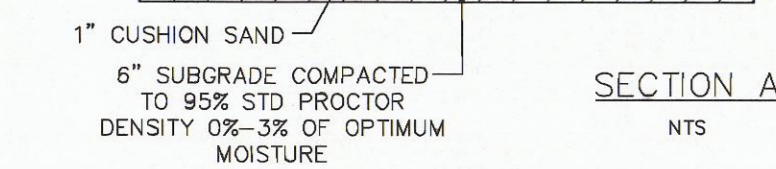
LONGITUDINAL BUTT JOINT
NTS



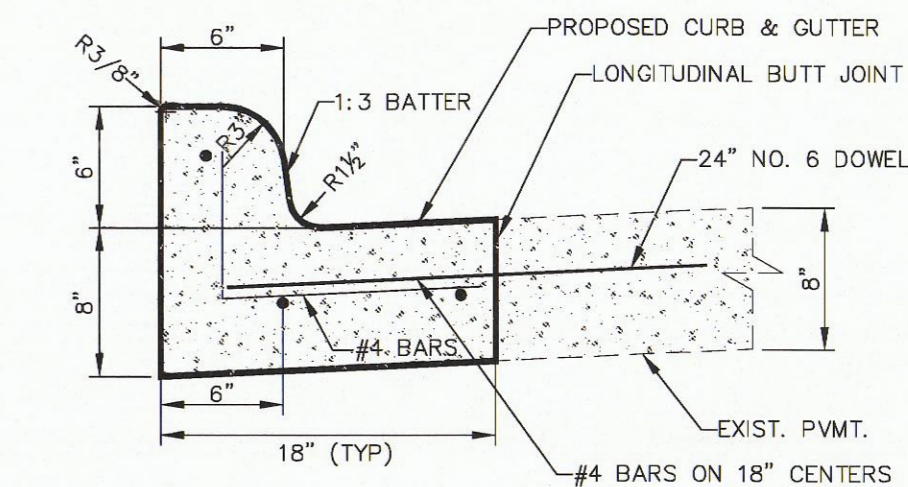
SIDEWALK WITH INTEGRAL RETAINING WALL
NTS



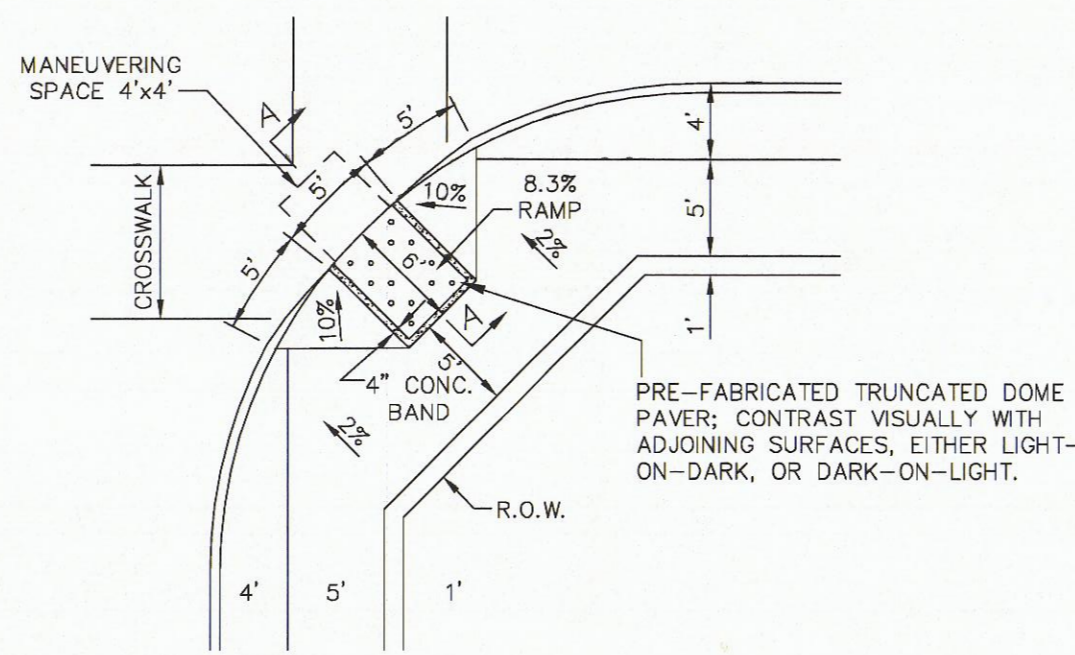
SIDEWALK DETAIL
NTS



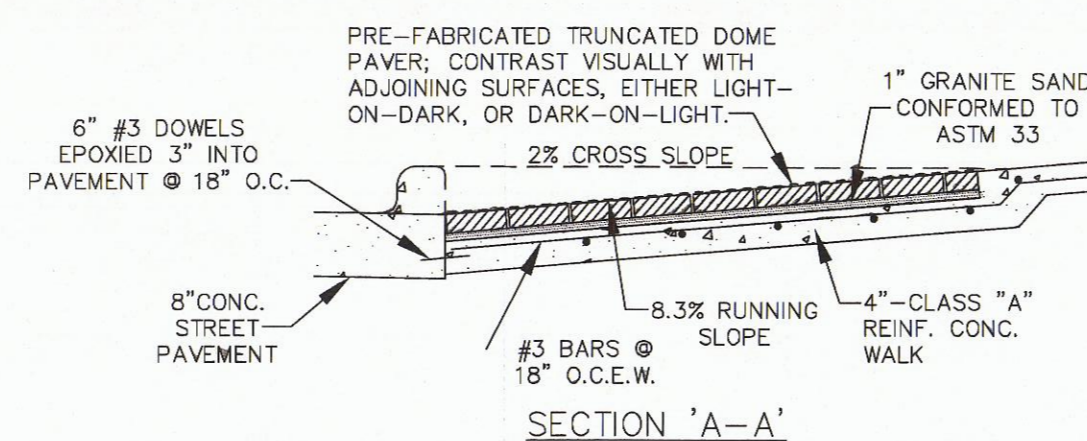
SECTION A
NTS



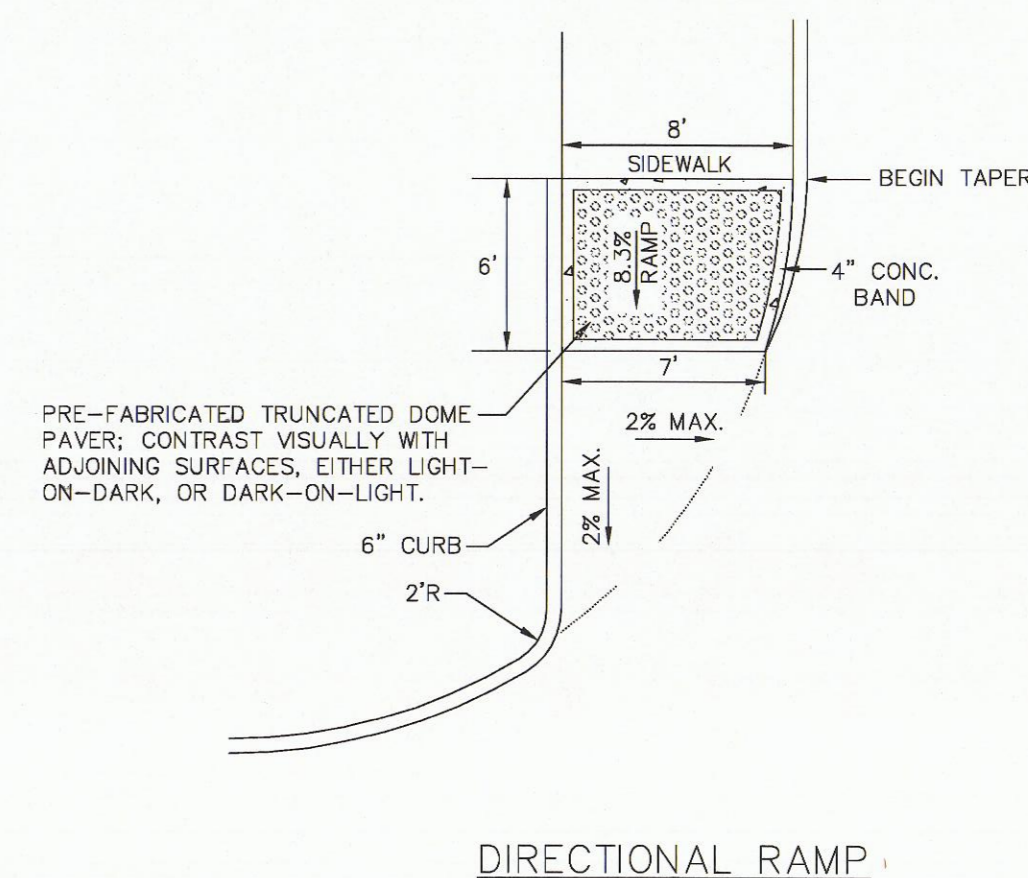
PROPOSED CURB & GUTTER DETAIL
NTS



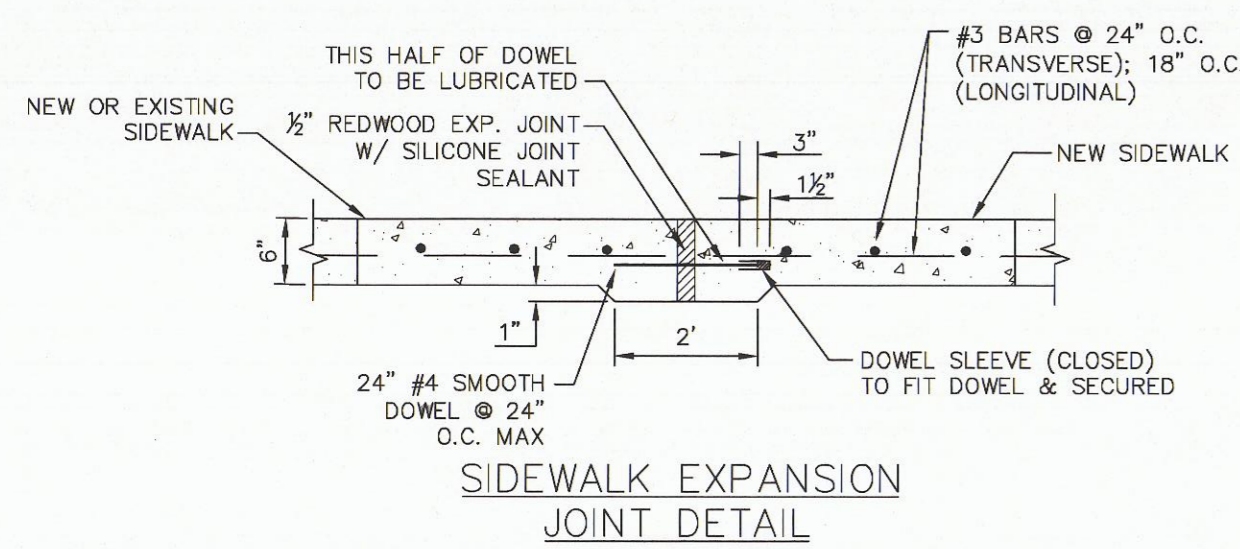
CORNER RAMP



SECTION 'A-A'



DIRECTIONAL RAMP



SIDEWALK EXPANSION JOINT DETAIL
NTS

NO.	DATE	REVISION	APPROV.
1			
2			
3			
4			
5			
6			

GRANTHAM & ASSOCIATES
F-009458

STATE OF TEXAS
REGISTERED PROFESSIONAL ENGINEER
101252
P. CHRISTOPHER ROBINSON

APPEARING ON THIS DOCUMENT WAS AUTHORIZED BY:
P. CHRISTOPHER ROBINSON
ON 9/23/14
ALTERATION OF A SEALED DOCUMENT WITHOUT PROPER NOTIFICATION TO THE RESPONSIBLE ENGINEER IS AN OFFENSE UNDER THE TEXAS ENGINEERING PRACTICE ACT.

BELTWAY DRIVE PAVEMENT & TRAIL IMPROVEMENTS
MISCELLANEOUS DETAILS
TOWN OF ADDISON

DATE: SEPTEMBER 2014
SCALE:
DRAWN BY: G&A
DESIGN: BRG
REVIEWED: BRG
JOB NO: 1197-14
DWG: 11888BELTWAY-DETAILS