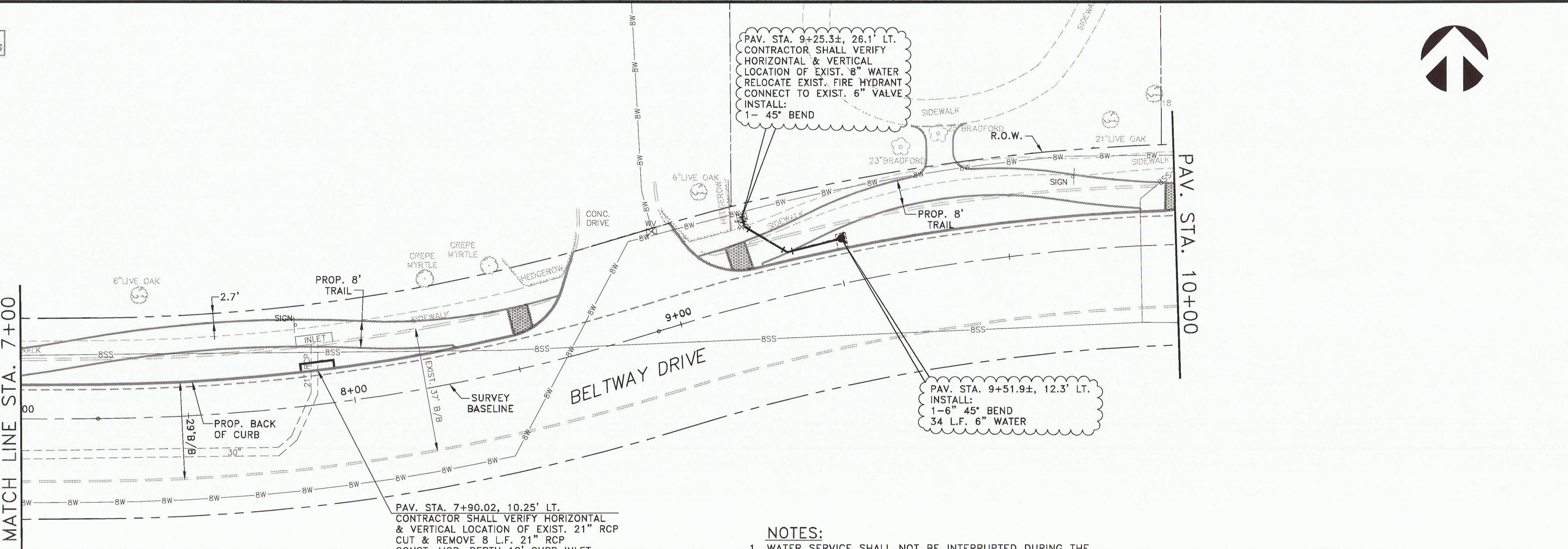
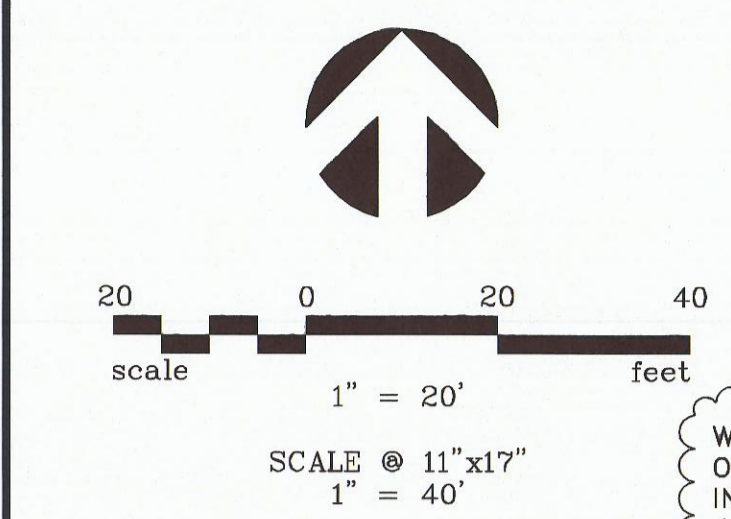


**WATER MAIN LOWERING**



- NOTES:**
1. WATER SERVICE SHALL NOT BE INTERRUPTED DURING THE AFFECTED BUSINESS'S OPERATING HOURS. THE CONTRACTOR IS RESPONSIBLE FOR COORDINATING THE WATER SERVICE INTERRUPTION WITH THE PROPERTY OWNERS AND TOWN PRIOR TO CONSTRUCTION.
  2. THE CONTRACTOR SHALL NOT USE OR OPERATE ANY WATER VALVES, HYDRANTS, OR ANY OTHER TOWN-OWNED FACILITIES OR UTILITIES OF ANY KIND. CONTRACTOR SHALL CONTACT THE TOWN SO THAT THE TOWN MAY OPERATE VALVES.
  3. ONLY ONE FIRE HYDRANT MAY BE REMOVED FROM SERVICE AT ANY ONE TIME.



NO.	DATE	REVISION	APPROV.
1			
2			
3			
4			
5			
6			

GRANTHAM & ASSOCIATES  
 F-005438

APPEARING ON THIS DOCUMENT WAS AUTHORIZED BY:  
 P. CHRISTOPHER ROBINSON  
 ON 9/29/14

ALTERATION OF A SEALED DOCUMENT WITHOUT PROPER NOTIFICATION TO THE RESPONSIBLE ENGINEER IS AN OFFENSE UNDER THE TEXAS ENGINEERING PRACTICE ACT.

**BELTWAY DRIVE PAVEMENT & TRAIL IMPROVEMENTS & WATER & STORM SEWER**

**TOWN OF ADDISON**

DATE: SEPTEMBER 2014  
 SCALE:  
 DRAWN BY: G&A  
 DESIGN: BRG  
 REVIEWED: BRG  
 JOB NO: 1197-14  
 DWG: 1188BELTWAY-WAT-STM