

LEGEND:

- PROPOSED TRAIL (1.5% CROSS SLOPE)
- NEW 6" CLASS "K" HIGH EARLY STRENGTH (2600 PSI IN 24HRS) CONCRETE DRIVEWAY
- PROPOSED BARRIER FREE RAMP

TRAIL CENTERLINE CONTROL DATA:

POINT NO.	STATION	OFFSET	NORTHING	EASTING	DESCRIPTION
11	B/L STA. 10+17.01	19.40' LT.	7033384.48	2478958.51	TRAIL P.R.C.
12	B/L STA. 10+56.08	14.29' LT.	7033381.51	2478998.93	TRAIL P.T.
13	B/L STA. 11+11.29	14.25' LT.	7033381.89	2479054.31	TRAIL P.C.
14	B/L STA. 11+67.72	20.65' LT.	7033388.69	2479110.69	TRAIL P.R.C.
15	B/L STA. 12+29.08	20.11' LT.	7033388.58	2479172.05	TRAIL P.R.C.
16	B/L STA. 12+77.02	14.25' LT.	7033383.06	2479220.04	TRAIL P.T.

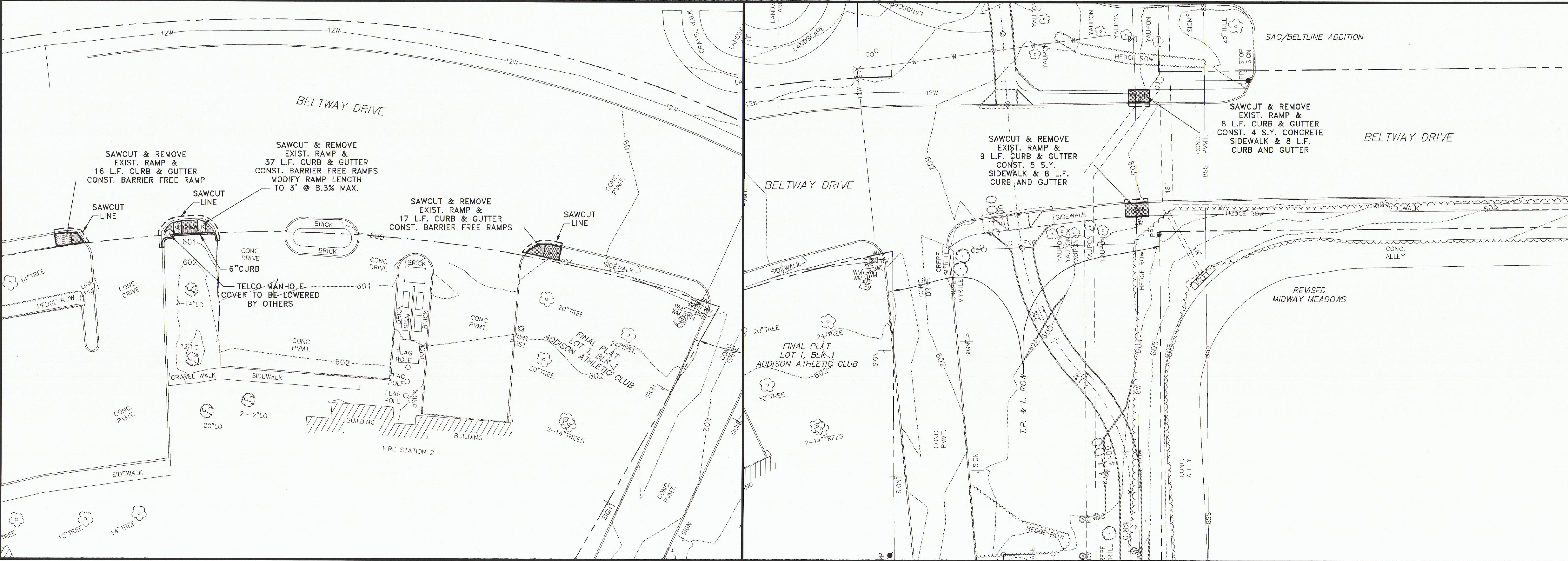
TRAIL CENTERLINE LINE DATA:

NUMBER	DIRECTION	DISTANCE
L4	N 89°35'53" E	55.38'
L5	N 89°35'53" E	218.08'

TRAIL CENTERLINE CURVE DATA:

NUMBER	RADIUS	DELTA ANGLE	ARC LENGTH	CHORD DIRECTION	CHORD LENGTH
C7	122.00'	361°4'21"	77.16'	N 80°42'14" E	75.88'
C8	252.00'	09°13'32"	40.58'	S 85°47'21" E	40.53'
C9	252.00'	12°56'20"	56.91'	N 83°07'43" E	56.79'
C10	132.00'	26°52'48"	61.93'	S 89°54'03" E	61.36'
C11	199.00'	13°56'28"	48.42'	S 83°25'53" E	48.30'
C12	26.00'	90°21'11"	41.00'	N 44°25'17" E	36.88'

NOTE: SEE LANDSCAPE PLANS FOR DRIVEWAY CROSSWALK AESTHETIC PAVEMENT TREATMENT DETAILS.



Grantham & Associates, Inc.
 Civil Engineering & Surveying
 Serving with Integrity

6570 NAAMAN FOREST BLVD., SUITE 200, L.B. 2
 GARLAND, TEXAS 75044

(972) 844-2333 (TEL)
 (972) 844-2334 (FAX)

NO.	DATE	REVISION	APPROV.
1			
2			
3			
4			
5			
6			

STATE OF TEXAS
 P. CHRISTOPHER ROBINSON
 101252
 REGISTERED PROFESSIONAL ENGINEER

NOT APPEARING ON THIS DOCUMENT WAS AUTHORIZED BY P. CHRISTOPHER ROBINSON ON 9/29/14 ALTERATION OF A SEALED DOCUMENT WITHOUT PROPER NOTIFICATION TO THE RESPONSIBLE ENGINEER IS AN OFFENSE UNDER THE TEXAS ENGINEERING PRACTICE ACT

BELTWAY DRIVE PAVEMENT & TRAIL IMPROVEMENTS PAVING PLAN - SHEET 2

TOWN OF ADDISON

DATE: SEPTEMBER 2014
 SCALE:
 DRAWN BY: C&A
 DESIGN: BRG
 REVIEWED: BRG
 JOB NO: 1197-14
 DWG: 1188BELTWAYP02

SHEET OF 21