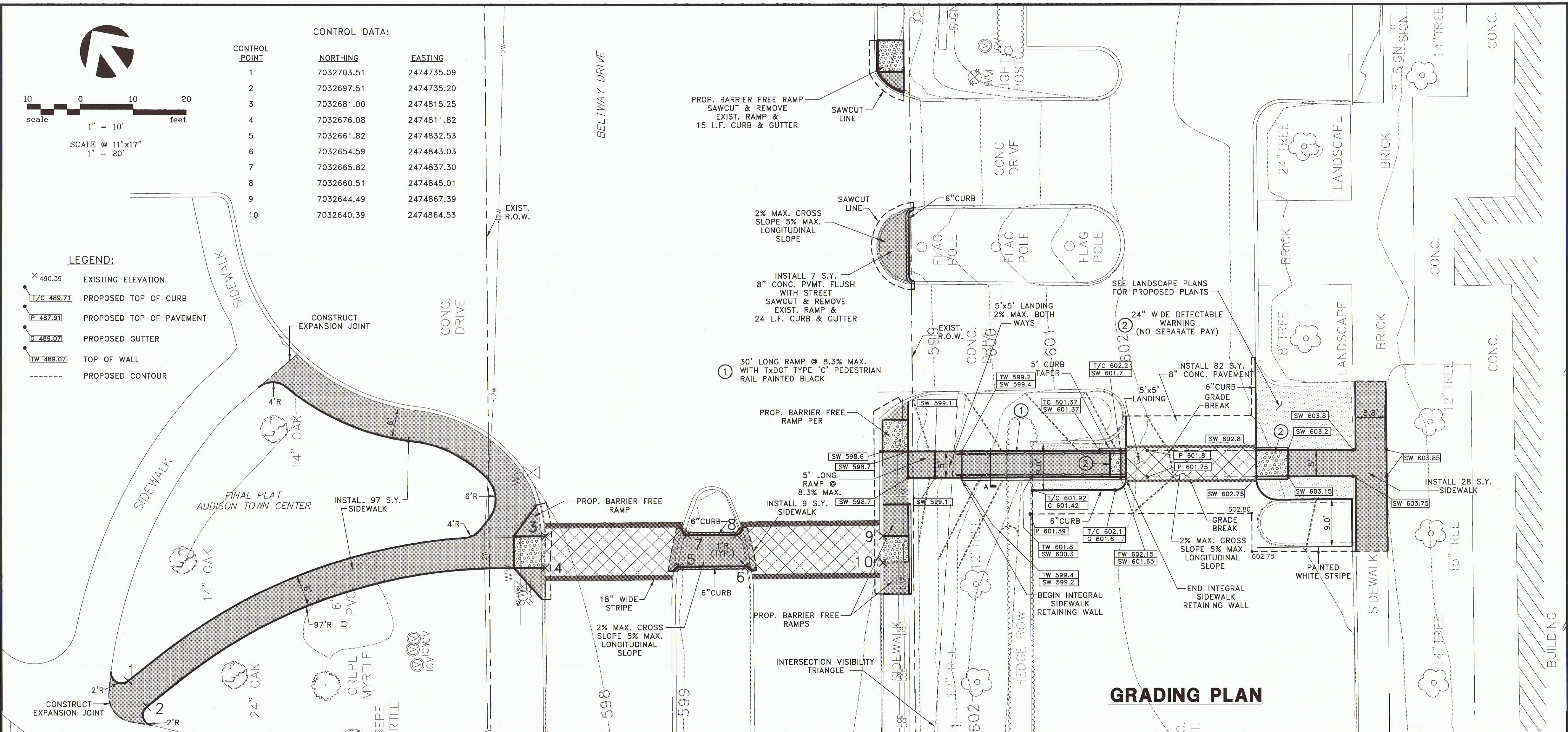


CONTROL DATA:

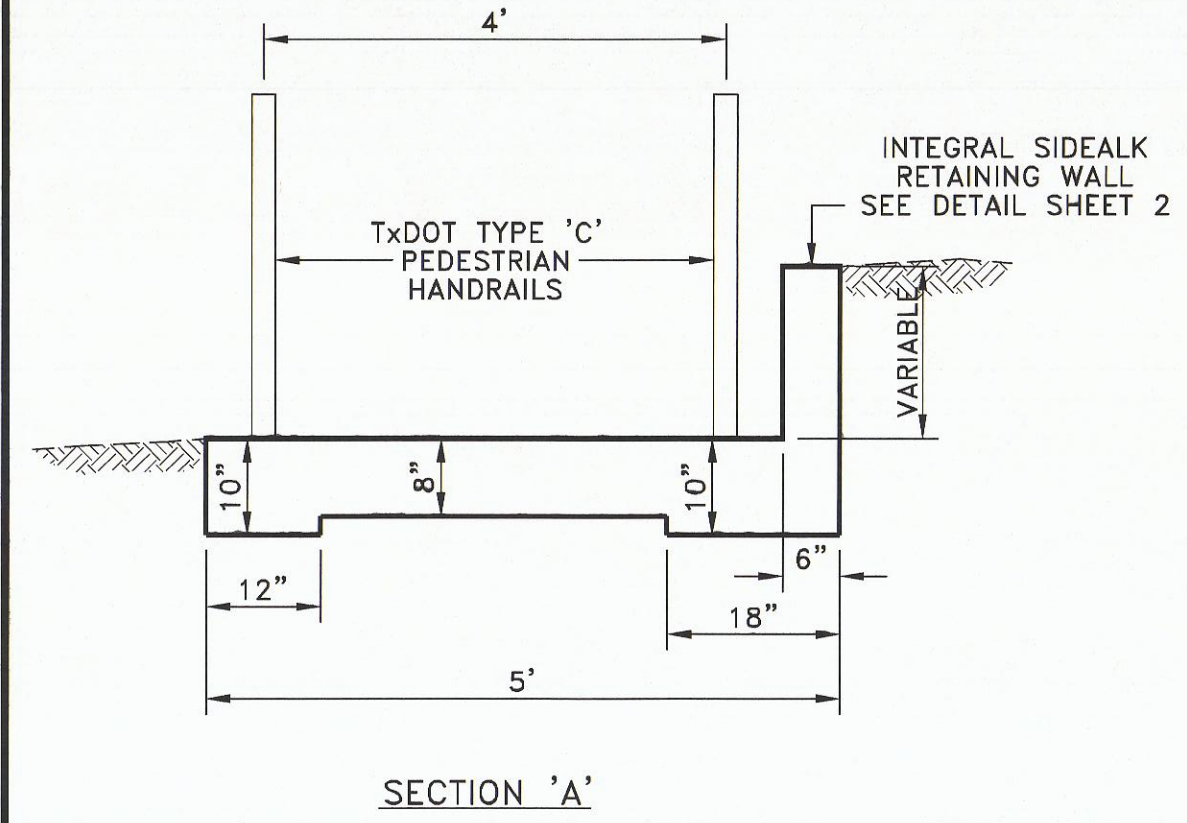
CONTROL POINT	NORTHING	EASTING
1	7032703.51	2474735.09
2	7032697.51	2474735.20
3	7032681.00	2474815.25
4	7032676.08	2474811.82
5	7032661.82	2474832.53
6	7032654.59	2474843.03
7	7032665.82	2474837.30
8	7032660.51	2474845.01
9	7032644.49	2474867.39
10	7032640.39	2474864.53

- LEGEND:**
- X 490.39 EXISTING ELEVATION
 - T/C 489.71 PROPOSED TOP OF CURB
 - P 487.91 PROPOSED TOP OF PAVEMENT
 - G 489.07 PROPOSED GUTTER
 - TW 489.07 TOP OF WALL
 - PROPOSED CONTOUR

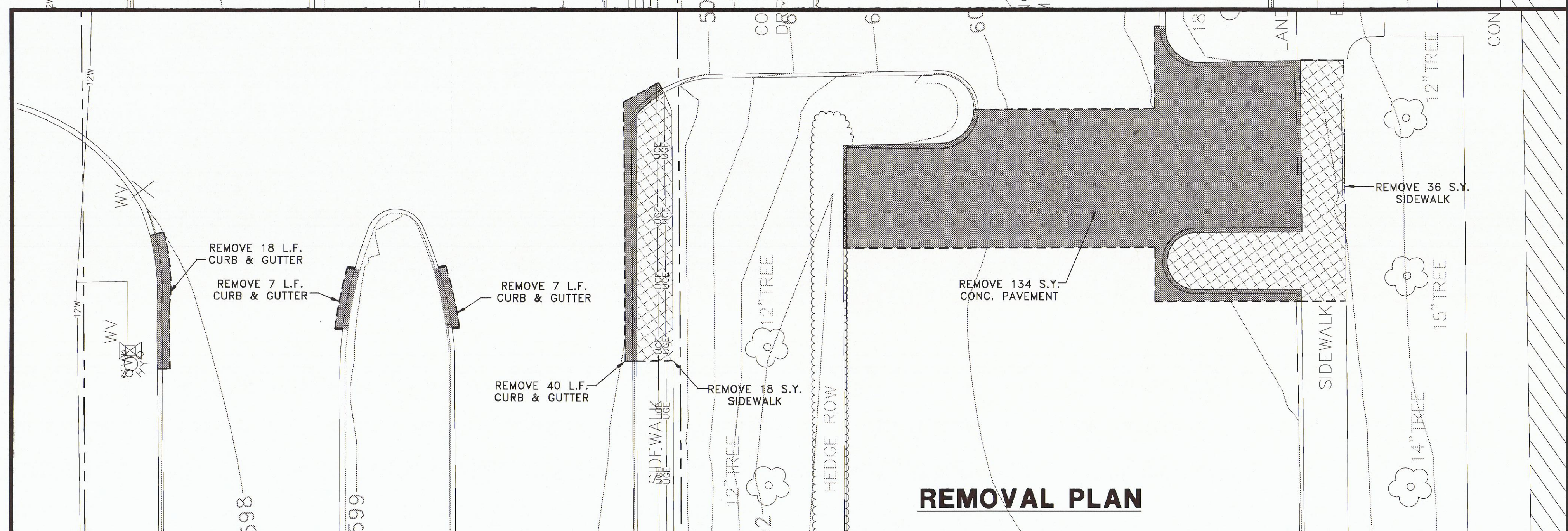


GRADING PLAN

NOTE:
SEE LANDSCAPE PLANS FOR CROSSWALK AESTHETIC PAVEMENT TREATMENT DETAILS.



SECTION 'A'



REMOVAL PLAN

Grantham & Associates, Inc.
Civil Engineering & Surveying
"Serving with Integrity"

6570 NAAMAN FOREST BLVD., SUITE 200, LB. 2
GARLAND, TEXAS 75044

NO.	DATE	REVISION	APPROV.
1			
2			
3			
4			
5			
6			

GRANTHAM & ASSOCIATES
F-005438

P. CHRISTOPHER ROBINSON
101252
REGISTERED PROFESSIONAL ENGINEER
STATE OF TEXAS

THE SEAL APPEARING ON THIS DOCUMENT WAS AUTHORIZED BY P. CHRISTOPHER ROBINSON ON 9/29/14.
ALTERATION OF A SEALED DOCUMENT WITHOUT PROPER NOTIFICATION TO THE RESPONSIBLE ENGINEER IS AN OFFENSE UNDER THE TEXAS ENGINEERING PRACTICE ACT.

CROSSWALK IMPROVEMENTS AT BELTWAY DRIVE @ A.A.C. SIDEWALK PLAN

TOWN OF ADDISON

DATE: SEPTEMBER 2014
SCALE: 1"=10'
DRAWN BY: C&A
DESIGN: BRG
REVIEWED: BRG
JOB NO: 1197-14
DWG: 1188ATHLETIC-CLUB

SHEET
19 OF 21