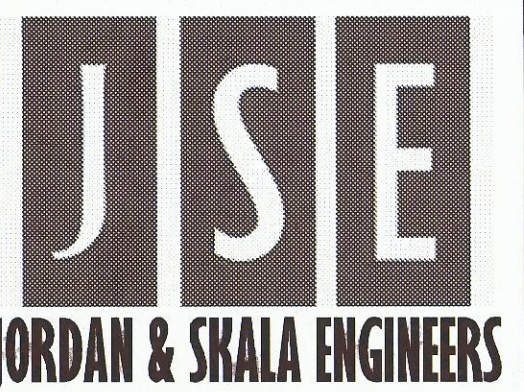


KEY NOTES:

- 1 NEW STREET LIGHT CONTROLLER PEDESTRAL MOUNTED. CONTACT RICK FIELDING (ONCOR) FOR LOCATION TO STUB UP 2" PVC.
- 2 NOT USED.
- 3 480V SINGLE PHASE PAD MOUNTED TRANSFORMER TO FEED POLE LIGHTS BY ONCOR.
- 4 REPLACE EXISTING STREET LIGHT AND EXISTING WIRING WITH NEW POLE LIGHTS AND NEW WIRING.
- 5 EXISTING TRAIL LIGHTS TO REMAIN.
- 6 EXISTING STREET LIGHTS TO REMAIN.
- 7 EXISTING HANDHOLE 120/240 SOURCE.



7855 North Dallas Parkway, Suite 320
 Dallas, TX 75287
 V: (469) 385-1616 F: (469) 385-1615



THIS DRAWING IS THE PROPERTY OF JORDAN & SKALA ENGINEERS INC. AND IS NOT TO BE REPRODUCED IN WHOLE OR IN PART WITHOUT WRITTEN PERMISSION BY JORDAN & SKALA ENGINEERS.

ADDISON PEDESTRIAN CONNECTION PH 2 & 3
 ADDISON, TEXAS

PRINT RECORD

DATE	ISSUED FOR
5/21/2014	REVIEW SET
06/23/14	50% REVIEW SET
07/30/14	90% CD
08/18/14	95% CD
09/17/14	CHECK SET
09/23/14	100% BID DOCUMENT

REVISIONS

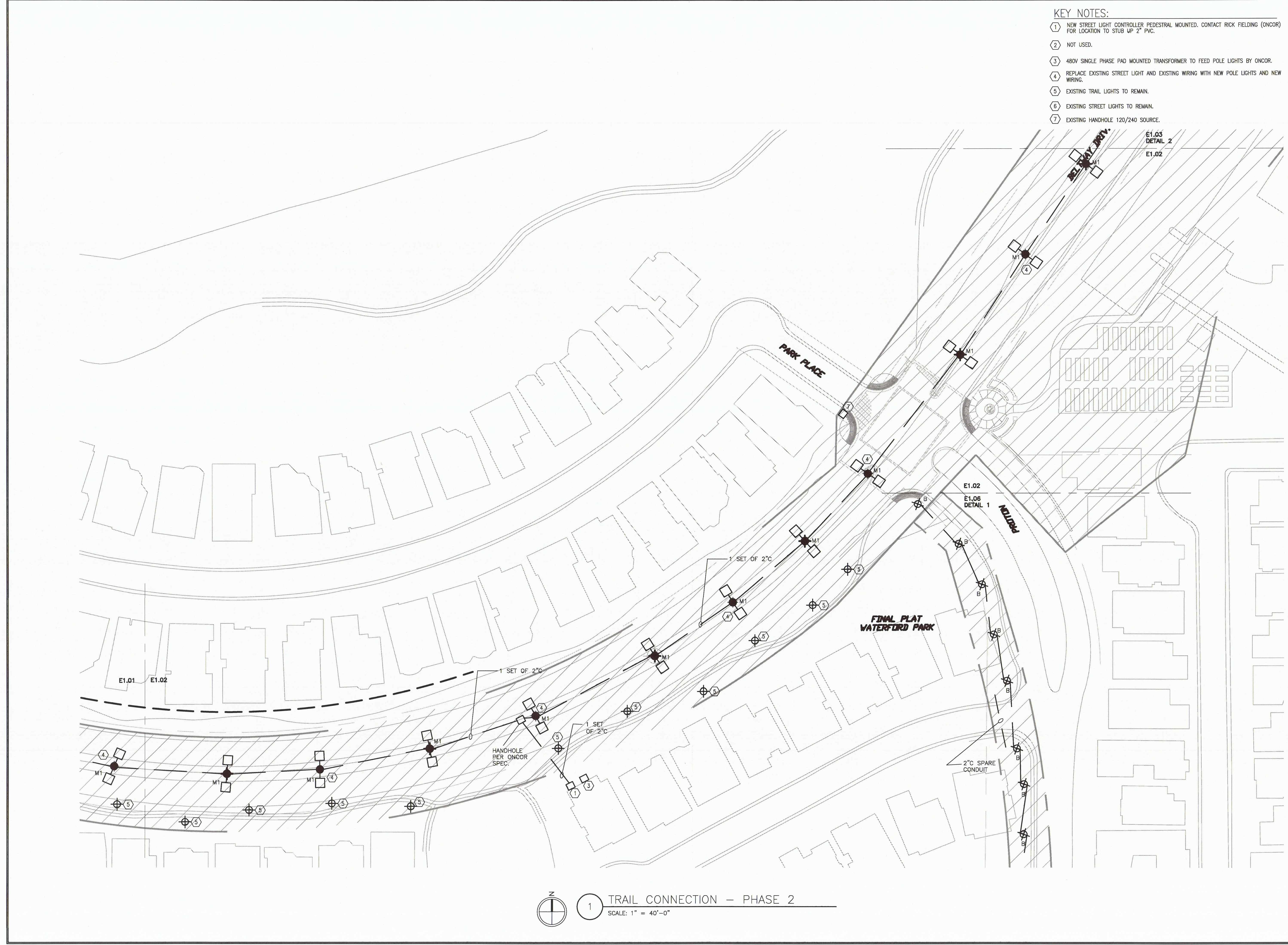
DATE	DESCRIPTION

Project Number: 143-0340
 Drawn By: VB Checked By: MNB

SHEET TITLE
ELECTRICAL - POWER

SHEET NUMBER
E1.02

NOT ISSUED FOR CONSTRUCTION



1 TRAIL CONNECTION - PHASE 2
 SCALE: 1" = 40'-0"