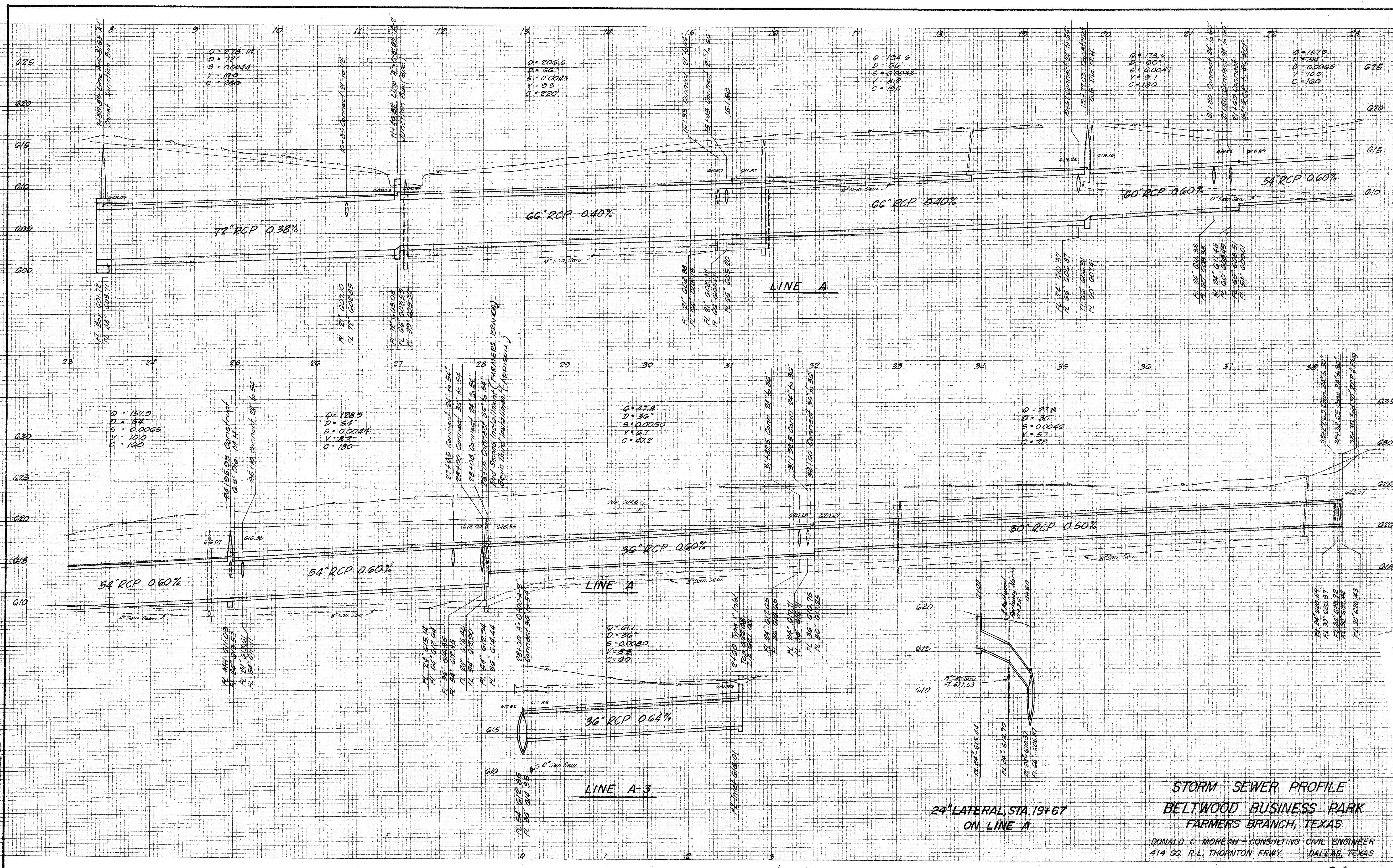


*Additional notes  
E46*

**DRAINAGE AREA MAP  
BELTWOOD BUSINESS PARK  
FARMERS BRANCH, TEXAS**

DONALD C. MOREAU - CONSULTING CIVIL ENGINEER  
414 SO. R. L. THORNTON CREEK DALLAS, TEXAS





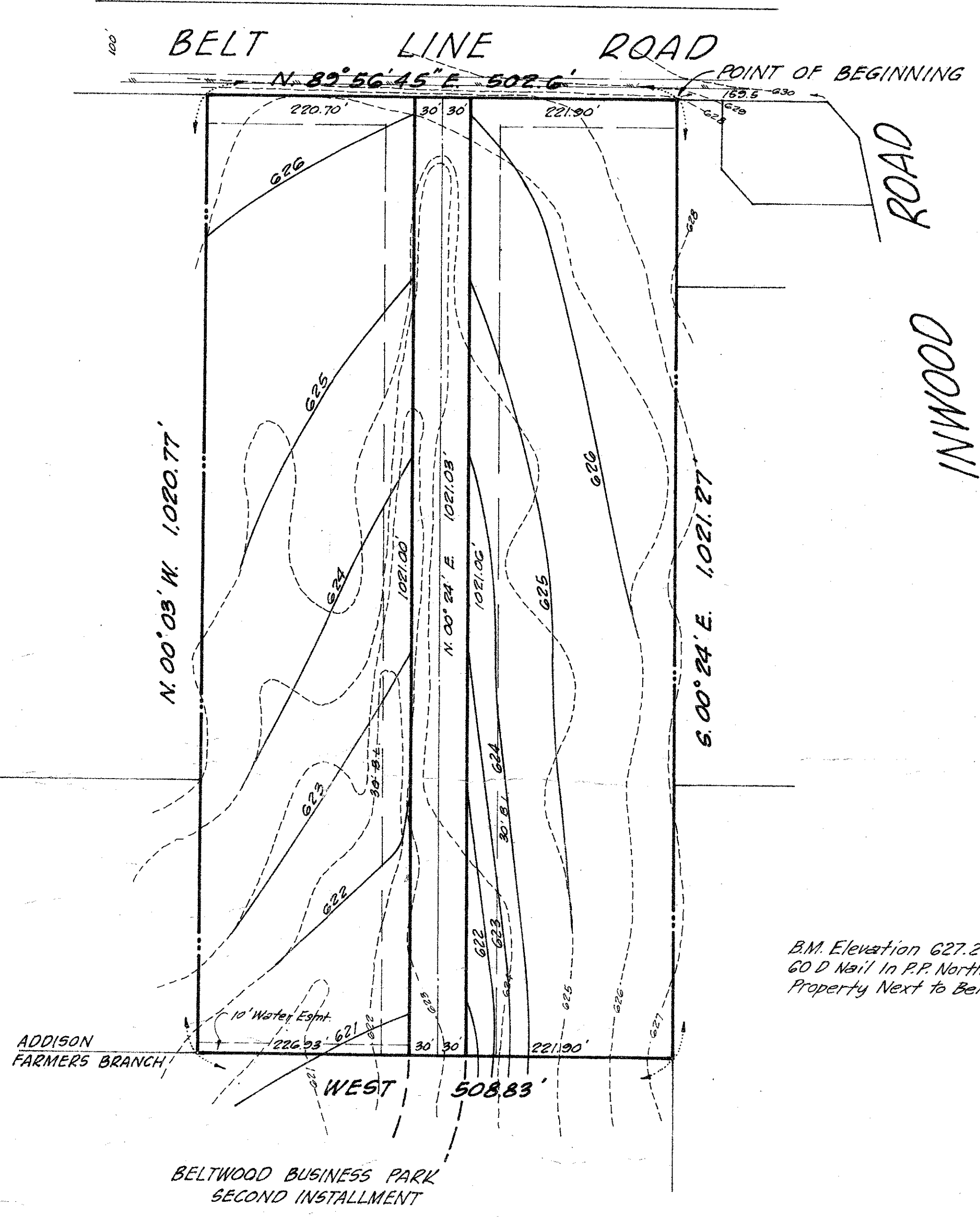
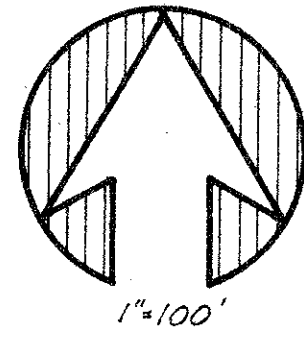
**STORM SEWER PROFILE**  
**BELTWOOD BUSINESS PARK**  
**FARMERS BRANCH, TEXAS**  
 DONALD G. MOREAU + CONSULTING CIVIL ENGINEER  
 414 SO. R.L. THORNTON FRWY. DALLAS, TEXAS

24" LATERAL, STA. 19+67  
 ON LINE A

Drawer 5  
 #6

Drawer 5  
 #6





**GRADING & DRAINAGE  
BELTWOOD BUSINESS PARK  
THIRD INSTALLMENT**

ELISHA FIKE SURVEY, ABST. 478  
ADDISON, TEXAS

OWNER: BELTWOOD PROPERTIES  
P. O. BOX 34047  
DALLAS, TEXAS

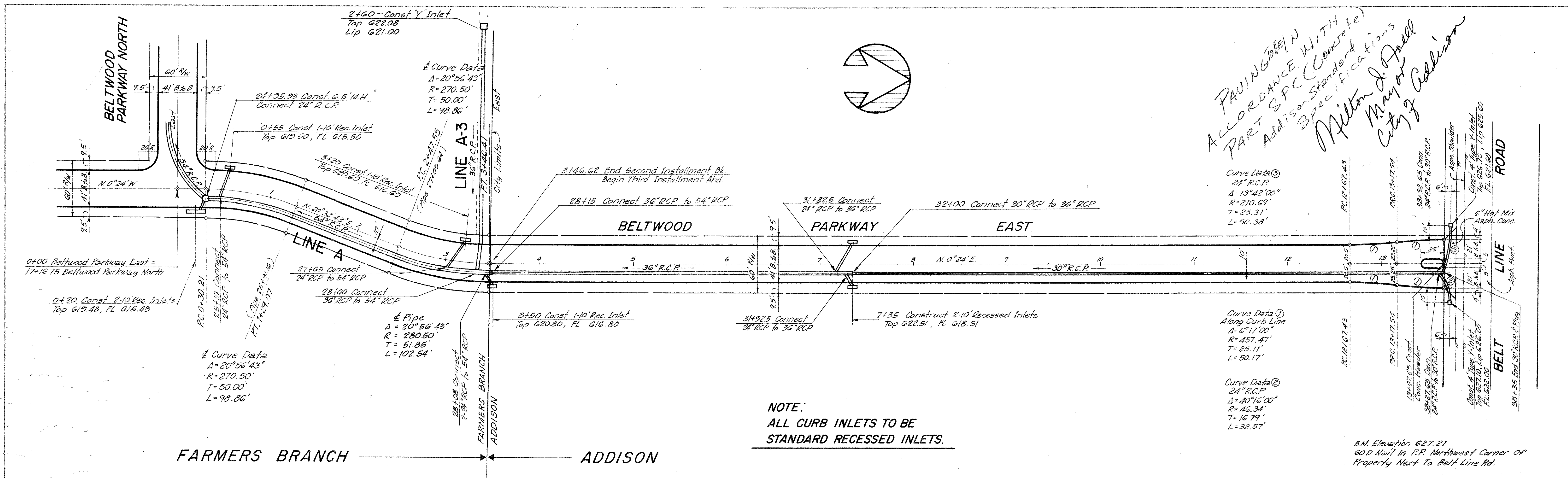
ENGINEER: DONALD C. MOREAU  
414 SO. THORNTON FRWY.  
DALLAS, TEXAS

*Addison Station  
4 of 6*

DATE	
BY	
REVISIONS	
NO.	
DESCRIPTION	
DATE	
BY	
REVISIONS	
NO.	
DESCRIPTION	
DATE	
BY	
REVISIONS	
NO.	
DESCRIPTION	
DATE	
BY	
REVISIONS	
NO.	
DESCRIPTION	

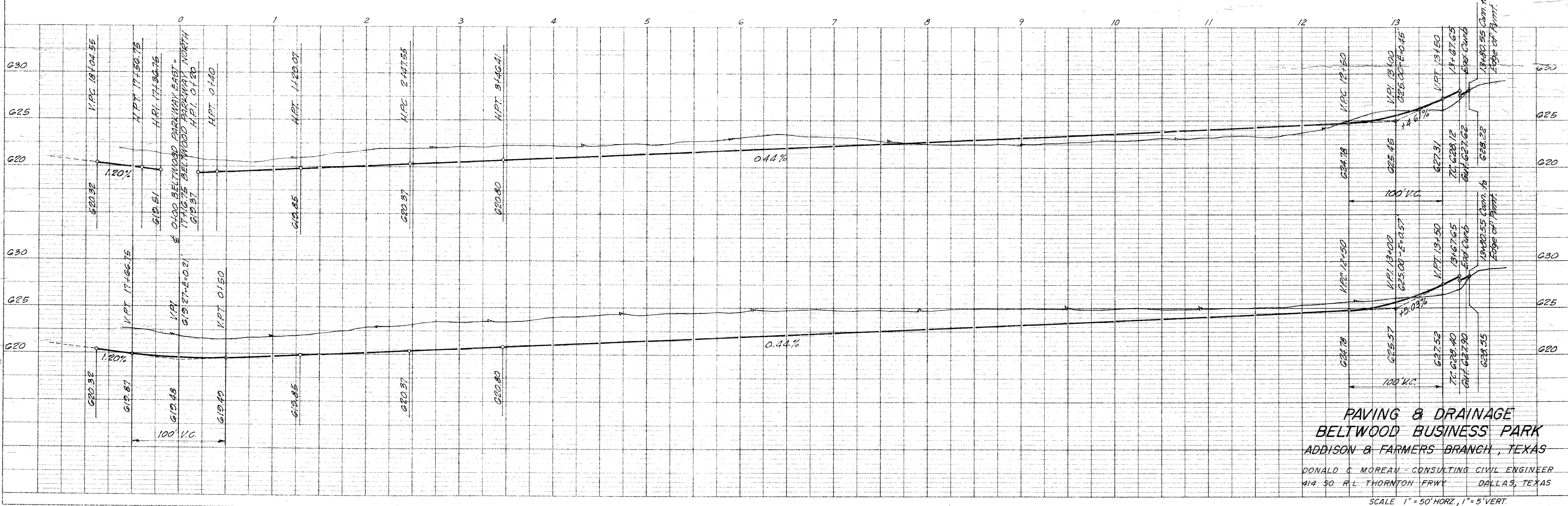
DATE	
BY	
REVISIONS	
NO.	
DESCRIPTION	
DATE	
BY	
REVISIONS	
NO.	
DESCRIPTION	
DATE	
BY	
REVISIONS	
NO.	
DESCRIPTION	

PAVING TO BE IN ACCORDANCE WITH PART 5 PC (Concrete) Addition Standard Specifications  
 Milton J. Papp  
 Mayor  
 City of Addison



NOTE:  
 ALL CURB INLETS TO BE STANDARD RECESSED INLETS.

B.M. Elevation 627.21  
 60D Nail in P.P. Northwest Corner of Property Next to Belt Line Rd.



PAVING & DRAINAGE  
 BELTWOOD BUSINESS PARK  
 ADDISON & FARMERS BRANCH, TEXAS  
 DONALD C. MOREAU - CONSULTING CIVIL ENGINEER  
 414 50 R.L. THORNTON FRWY. DALLAS, TEXAS  
 SCALE 1" = 50' HORIZ., 1" = 5' VERT.

PLATE 1 PLAN-PROFILE G. P. & R. E. STANDARD  
 100% MAG. AERODUR VELLUM—MADE AND PRINTED IN U. S. A.  
 ENGINEER-DIETZGEN CO.

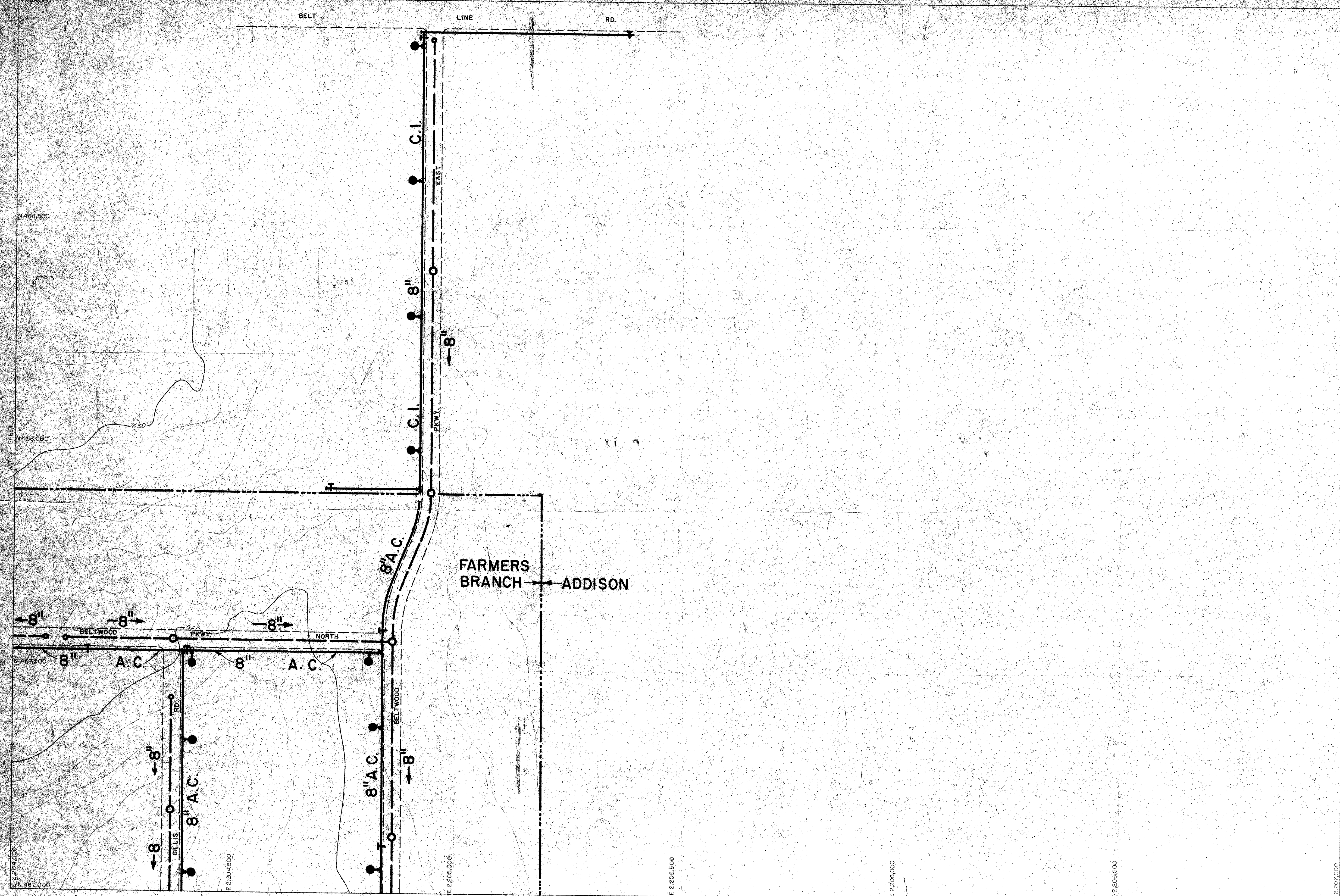
4-A

Drawer 5  
 #2

Addison Section  
 5 of

Addison Section  
 6 of 6  
 Drawer 5  
 #2

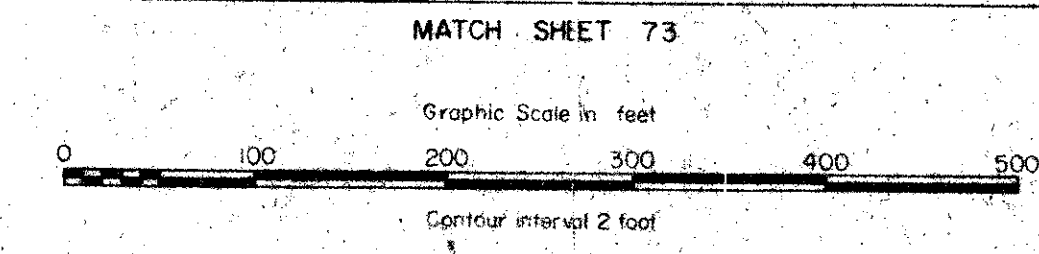




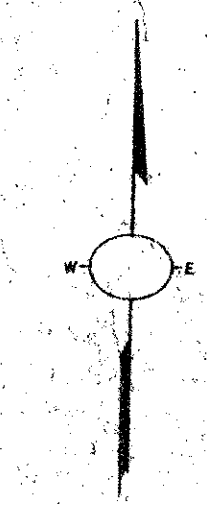
Compiled from aerial photographs taken Jan. 13, 1970 with Wild RC-8 camera. Horizontal Control was extended from existing U.S. Coast and Geodetic Survey monuments by tachymeter, and theodolite measurements, with further densification by Aero Triangulation with A-5 Autograph. Vertical control extended from existing U.S.C. and G.S. Bench Marks by spirit leveling.

This map complies with the National Mapping Standards of Accuracy both in plan and elevation.

The Co-ordinate system shown is based on the TEXAS STATE CO-ORDINATE SYSTEM North-Central Zone.



BUCE and ASSOCIATES, Inc.  
Aerial Surveyors



# City of FARMERS BRANCH

Topographic Map

B/S. 72