

D. P. & L.
VOL. 4633, PG. 308

NOTE: CONTRACTOR SHALL HAVE TO ELECTRIC FIELD LOCATE LOCATION OF UNDERGROUND CONDUIT IN THE VICINITY OF P.I. STA. 17+76.04. CONTRACTOR SHALL SHIFT PROPOSED MANHOLE LOCATION ALONG N-S LINE AND ADJUST HORIZONTAL ALIGNMENT OF E-W LINE AND NORTHEAST LINE TO AVOID ANY CONDUIT FOUND.

MATCH LINE STA. 12+00

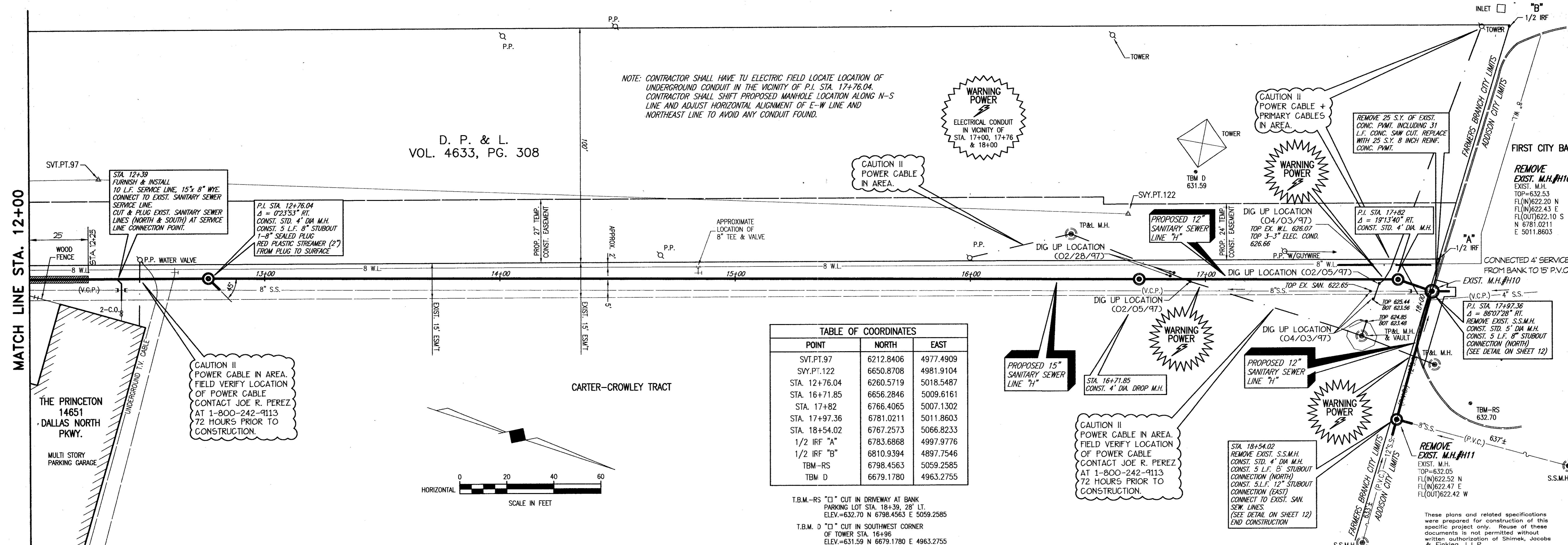
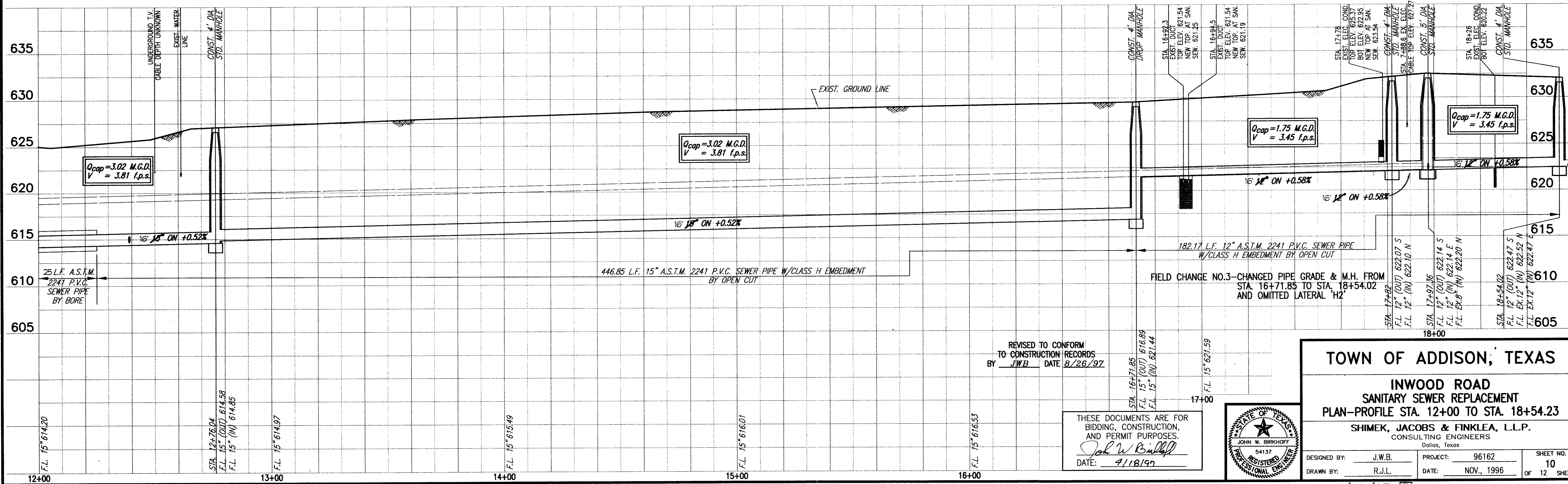


TABLE OF COORDINATES

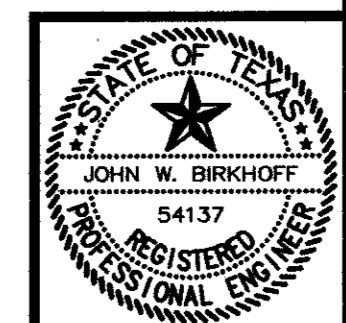
POINT	NORTH	EAST
SVT.PT.97	6212.8406	4977.4909
SVY.PT.122	6650.8708	4981.9104
STA. 12+76.04	6260.5719	5018.5487
STA. 16+71.85	6656.2846	5009.6161
STA. 17+82	6766.4065	5007.1302
STA. 17+97.36	6781.0211	5011.8603
STA. 18+54.02	6767.2573	5066.8233
1/2 IRF "A"	6783.6868	4997.9776
1/2 IRF "B"	6810.9394	4897.7546
TBM-RS	6798.4563	5059.2585
TBM D	6679.1780	4963.2755

T.B.M.-RS "□" CUT IN DRIVEWAY AT BANK PARKING LOT STA. 18+39.28' LT. ELEV.=632.70 N 6798.4563 E 5059.2585
 T.B.M. D "□" CUT IN SOUTHWEST CORNER OF TOWER STA. 16+96 ELEV.=631.59 N 6679.1780 E 4963.2755



REVISED TO CONFORM TO CONSTRUCTION RECORDS BY JWB DATE 8/28/97

THESE DOCUMENTS ARE FOR BIDDING, CONSTRUCTION, AND PERMIT PURPOSES.
 John W. Billed
 DATE: 9/18/97



TOWN OF ADDISON, TEXAS

**INWOOD ROAD
SANITARY SEWER REPLACEMENT
PLAN—PROFILE STA. 12+00 TO STA. 18+54.23**

SHIMEK, JACOBS & FINKLEA, L.L.P.
CONSULTING ENGINEERS
Dallas, Texas

DESIGNED BY: J.W.B. PROJECT: 96162 SHEET NO. 10
 DRAWN BY: R.J.L. DATE: NOV., 1996 OF 12 SHEETS