

- NOTES:
1. ALL DISTURBED AREAS SHALL BE RESTORED WITH SOLID SOD PLACED END TO END AND SIDE TO SIDE. CONTRACTOR SHALL WATER SOD ONCE A DAY FOR TWO WEEKS.
  2. CONTRACTOR SHALL HAVE THE OPTION TO OPEN CUT THE ROADWAY DURING NIGHT TIME HOURS OR TO BORE UNDER THE ROADWAY.

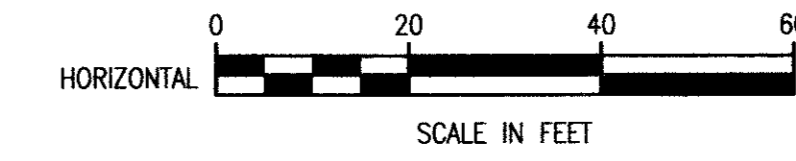
QUANTITIES		
1. 8 INCH SANITARY SEWER LINE	360	L.F.
2. STANDARD 4 FOOT DIA. MANHOLE	1	EA.
3. ONE-WAY CLEANOUT	2	EA.
4. 8 INCH x 8 INCH TEE	1	EA.
5. CONNECTION TO EXIST. SAN. SEW. LINE	1	S.F.
6. SOLID SOD	1300	L.S.
7. ROADWAY CROSSING	1	L.S.
8. FENCE REMOVAL & REPLACEMENT	1	L.S.
9. DRIVEWAY REMOVAL & REPLACEMENT	13.2	S.Y.
10. 15 INCH R.C.P. REMOVAL & REPLACEMENT	28	L.F.
11. CONCRETE RIP RAP & HEADWALL REMOVAL & REPLACEMENT	1	L.S.

**ADDISON MUNICIPAL AIRPORT ADDITION  
BLOCK 1  
LOT 1**

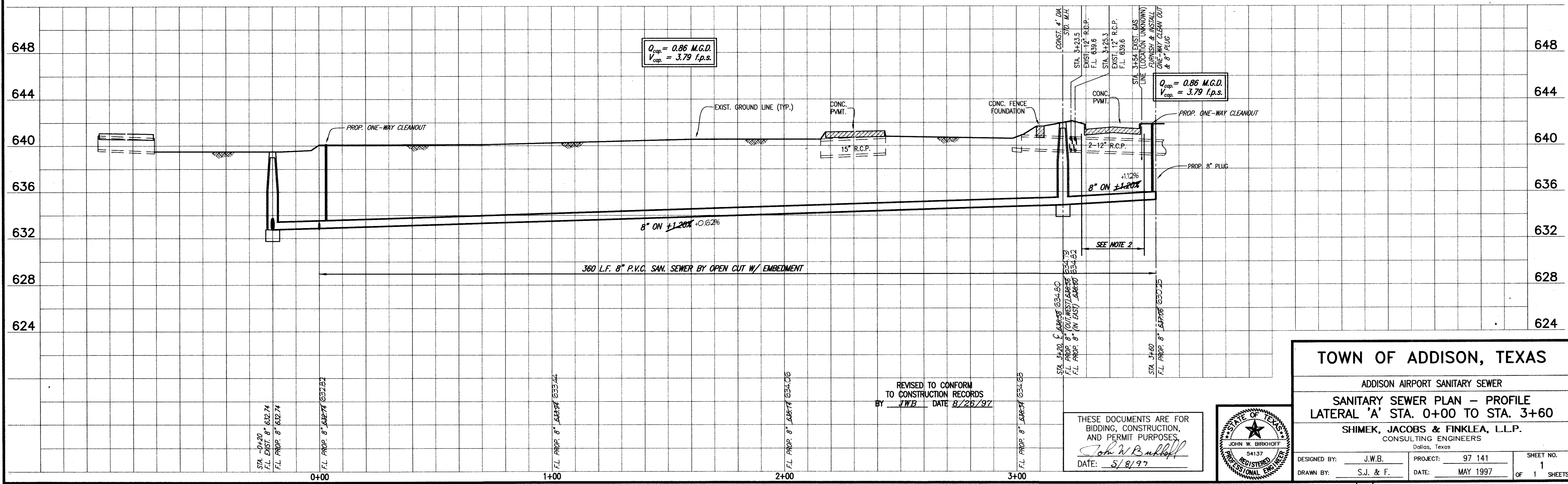
T.B.M. #6  
N 11809.3582, E 8839.6291  
"C" CUT IN NORTHEAST CORNER  
OF BUILDING AT PROP. WATER LINE  
STA. 19+10.50, 67.41' LT.  
ELEV. 641.21

T.B.M. AP-2  
N 11901.7151, E 8905.0072  
NORTH RIM OF EXISTING S.S.M.H.  
AT PROP. SAN. SEWER  
STA. 28+81.13, 23.91' RT.  
ELEV. 640.53

HATCHING INDICATES REMOVAL & REPLACING OF CONCRETE PAVEMENT (SEE PROFILE)

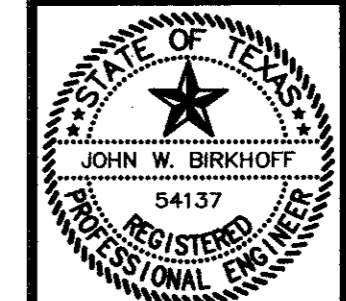


These plans and related specifications were prepared for construction of this specific project only. Reuse of these documents is not permitted without written authorization of Shimek, Jacobs & Finklea, L.L.P.



REVISED TO CONFORM TO CONSTRUCTION RECORDS BY JWB DATE 8/26/97

THESE DOCUMENTS ARE FOR BIDDING, CONSTRUCTION, AND PERMIT PURPOSES.  
*John W. Bullock*  
DATE: 5/8/97



**TOWN OF ADDISON, TEXAS**

ADDISON AIRPORT SANITARY SEWER

**SANITARY SEWER PLAN - PROFILE  
LATERAL 'A' STA. 0+00 TO STA. 3+60**

**SHIMEK, JACOBS & FINKLEA, L.L.P.**  
CONSULTING ENGINEERS  
Dallas, Texas

DESIGNED BY: J.W.B.	PROJECT: 97 141	SHEET NO. 1
DRAWN BY: S.J. & F.	DATE: MAY 1997	OF 1 SHEETS