

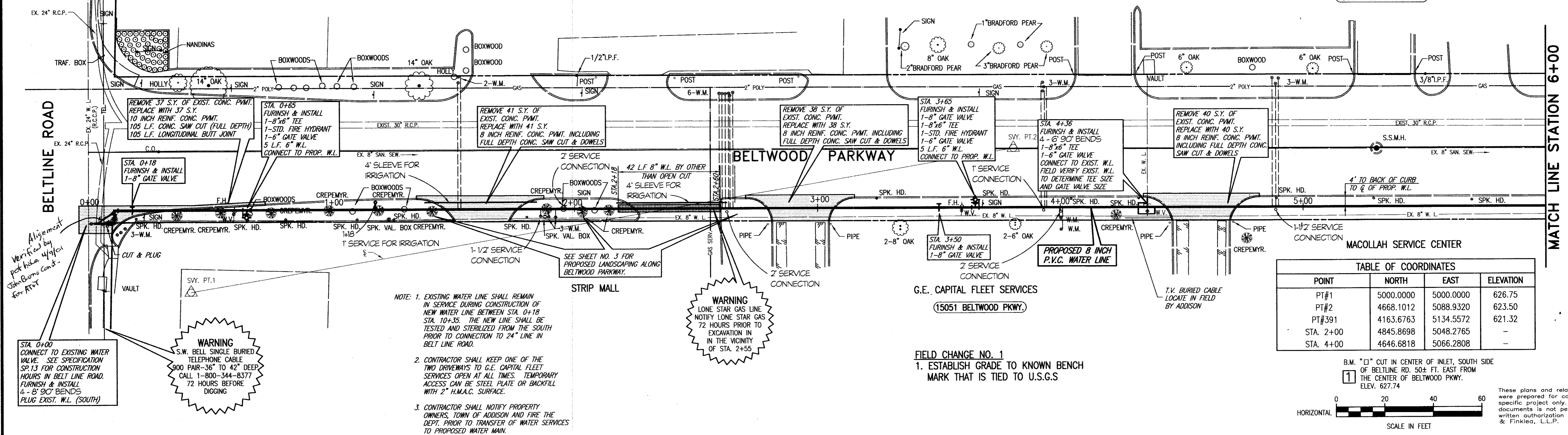
**LEGEND**

- REINFORCED CONCRETE P.V.M.T. REMOVAL AND REPLACEMENT
- WATER LINE CONSTRUCTION BY OTHER THAN OPEN CUT
- STRIP MALL

**SHORT SERVICES**  
 STA. 0+12, STA. 0+13, STA. 0+15, STA. 1+86, STA. 1+90, STA. 1+92, STA. 4+00 & STA. 4+01  
 FURNISH & INSTALL  
 2 INCH OUTLET  
 10 L.F. COPPER WATER LINE BY OPEN CUT  
 CONNECT TO EXISTING WATER METER,  
 INCLUDING ALL FITTINGS & NEW METER BOX

**LONG SERVICES**  
 STA. 1+53, STA. 1+54, STA. 2+60, STA. 2+61, STA. 2+62, STA. 2+63, STA. 2+64, STA. 2+65, STA. 3+93.5, STA. 3+94, STA. 3+94.5, STA. 4+88, STA. 4+89 & STA. 4+91  
 FURNISH & INSTALL  
 2 INCH OUTLET  
 CONNECT TO EXISTING SERVICE LINES  
 NO NEW SERVICE LINES REQUIRED UNDER PAVEMENT.

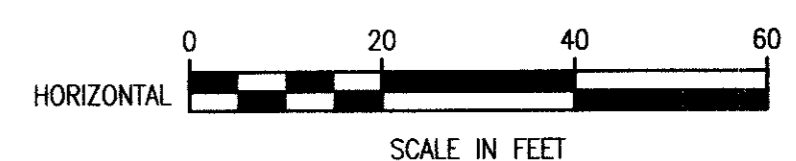
INSTRUMENT TECH CORP.  
 (15060 BELTWOOD PKWY.)



**TABLE OF COORDINATES**

POINT	NORTH	EAST	ELEVATION
PT#1	5000.0000	5000.0000	626.75
PT#2	4668.1012	5088.9320	623.50
PT#391	4163.6763	5134.5572	621.32
STA. 2+00	4845.8698	5048.2765	-
STA. 4+00	4646.6818	5066.2808	-

B.M. "D" CUT IN CENTER OF INLET, SOUTH SIDE OF BELTLINE RD. 50± FT. EAST FROM THE CENTER OF BELTWOOD PKWY. ELEV. 627.74

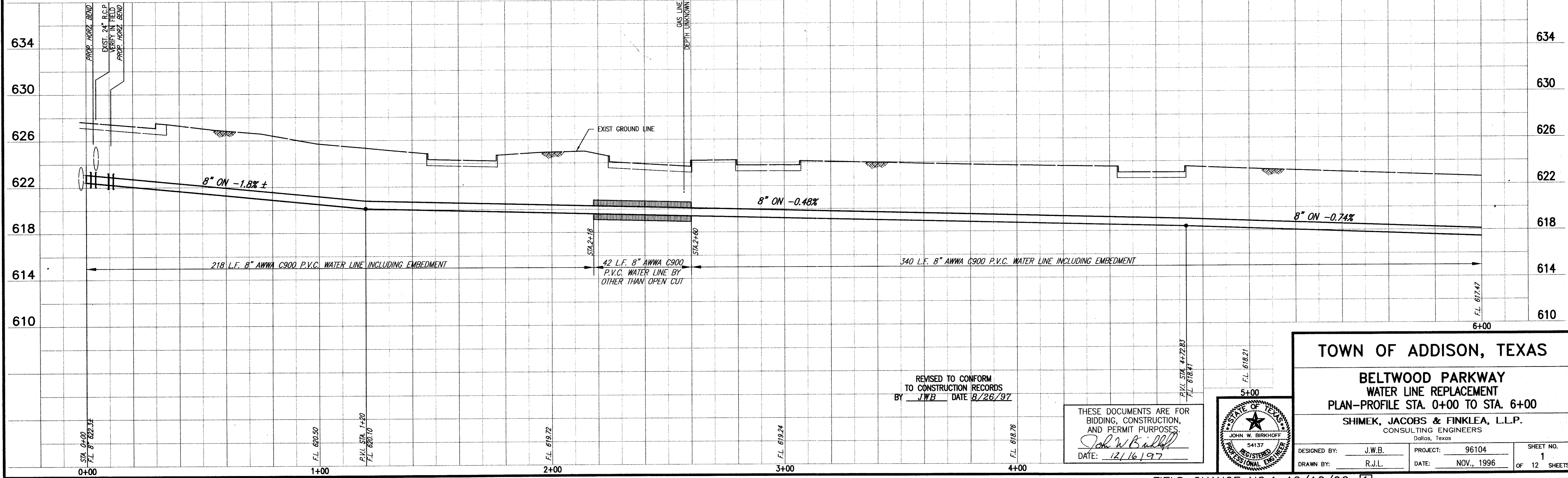


These plans and related specifications were prepared for construction of this specific project only. Reuse of these documents is not permitted without written authorization of Shimek, Jacobs & Finklea, L.L.P.

- NOTE:**
- EXISTING WATER LINE SHALL REMAIN IN SERVICE DURING CONSTRUCTION OF NEW WATER LINE BETWEEN STA. 0+18 STA. 10+35. THE NEW LINE SHALL BE TESTED AND STERILIZED FROM THE SOUTH PRIOR TO CONNECTION TO 24" LINE IN BELT LINE ROAD.
  - CONTRACTOR SHALL KEEP ONE OF THE TWO DRIVEWAYS TO G.E. CAPITAL FLEET SERVICES OPEN AT ALL TIMES. TEMPORARY ACCESS CAN BE STEEL PLATE OR BACKFILL WITH 2" H.M.A.C. SURFACE.
  - CONTRACTOR SHALL NOTIFY PROPERTY OWNERS, TOWN OF ADDISON AND FIRE THE DEPT. PRIOR TO TRANSFER OF WATER SERVICES TO PROPOSED WATER MAIN.

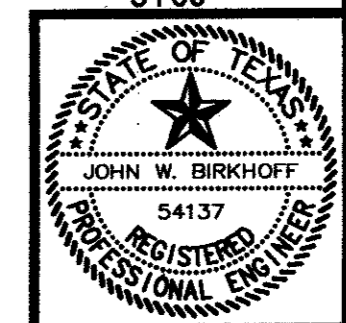
**WARNING**  
 LONE STAR GAS LINE  
 NOTIFY LONE STAR GAS  
 72 HOURS PRIOR TO  
 EXCAVATION IN  
 THE VICINITY  
 OF STA. 2+55

**FIELD CHANGE NO. 1**  
 1. ESTABLISH GRADE TO KNOWN BENCH MARK THAT IS TIED TO U.S.G.S



REVISED TO CONFORM TO CONSTRUCTION RECORDS BY *JWB* DATE *8/26/97*

THESE DOCUMENTS ARE FOR BIDDING, CONSTRUCTION, AND PERMIT PURPOSES.  
*John W. Birkhoff*  
 DATE: *12/16/97*



**TOWN OF ADDISON, TEXAS**

**BELTWOOD PARKWAY WATER LINE REPLACEMENT**  
 PLAN-PROFILE STA. 0+00 TO STA. 6+00

**SHIMEK, JACOBS & FINKLEA, L.L.P.**  
 CONSULTING ENGINEERS  
 Dallas, Texas

DESIGNED BY: J.W.B.	PROJECT: 96104	SHEET NO. 1
DRAWN BY: R.J.L.	DATE: NOV., 1996	OF 12 SHEETS