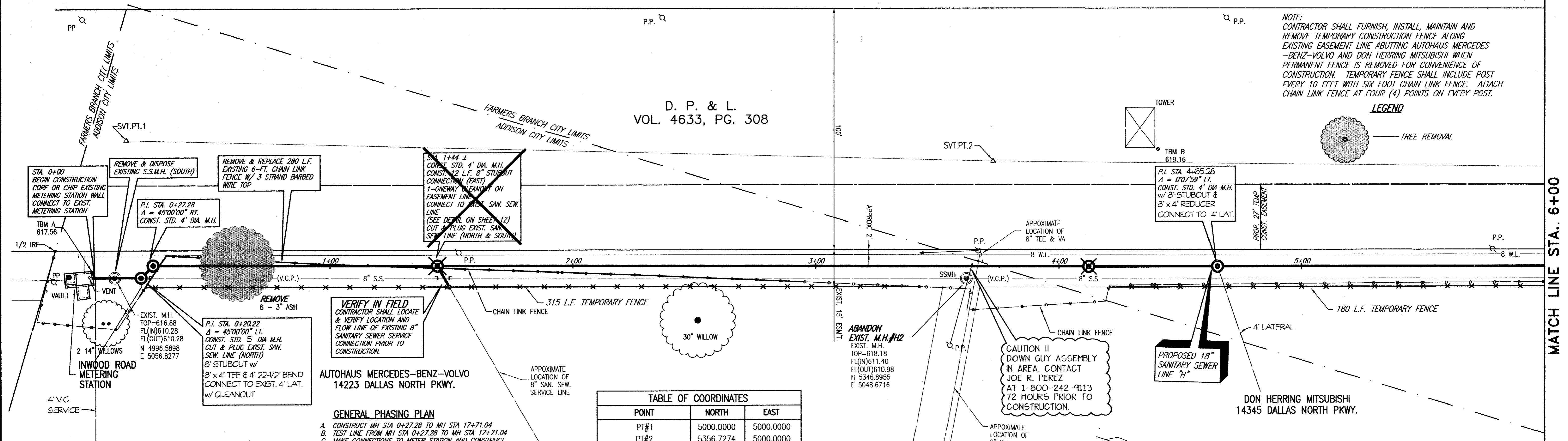
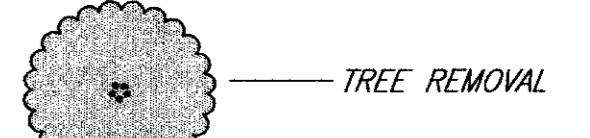


D. P. & L.
VOL. 4633, PG. 308

NOTE:
CONTRACTOR SHALL FURNISH, INSTALL, MAINTAIN AND REMOVE TEMPORARY CONSTRUCTION FENCE ALONG EXISTING EASEMENT LINE ABUTTING AUTOHAUS MERCEDES-BENZ-VOLVO AND DON HERRING MITSUBISHI WHEN PERMANENT FENCE IS REMOVED FOR CONVENIENCE OF CONSTRUCTION. TEMPORARY FENCE SHALL INCLUDE POST EVERY 10 FEET WITH SIX FOOT CHAIN LINK FENCE. ATTACH CHAIN LINK FENCE AT FOUR (4) POINTS ON EVERY POST.

LEGEND



AUTOHAUS MERCEDES-BENZ-VOLVO
14223 DALLAS NORTH PKWY.

DON HERRING MITSUBISHI
14345 DALLAS NORTH PKWY.

GENERAL PHASING PLAN

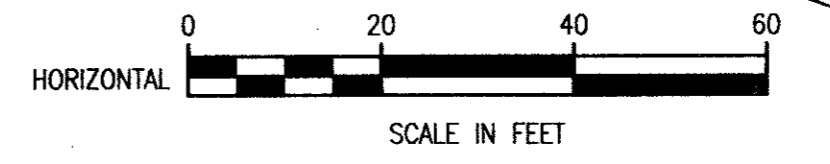
- CONSTRUCT MH STA 0+27.28 TO MH STA 17+71.04
- TEST LINE FROM MH STA 0+27.28 TO MH STA 17+71.04
- MAKE CONNECTIONS TO METER STATION AND CONSTRUCT FROM STA 0+00 TO 0+27.28 AND CONNECTION BETWEEN MH STA 17+71.04 TO MH #110 (LATERAL H-2).
- CONSTRUCT MH STA 17+71.04 TO MH STA 18+31.64 AND MAKE CONNECTION BETWEEN MH STA 7+88.96 AND MH #13 (LATERAL H-1)
- PROVIDE ADDISON WITH COLOR TV INSPECTION OF COMPLETED LINES IN "C" & "D" ABOVE.

TABLE OF COORDINATES

POINT	NORTH	EAST
PT#1	5000.0000	5000.0000
PT#2	5356.7274	5000.0000
1/2 IRF STA. -(0+12.9)	4971.9344	5046.3840
P.I. STA. 0+20.22	5007.3788	5056.5765
P.I. STA. 0+27.28	5012.2511	5051.4719
P.I. STA. 4+12.28	5397.1468	5042.5105

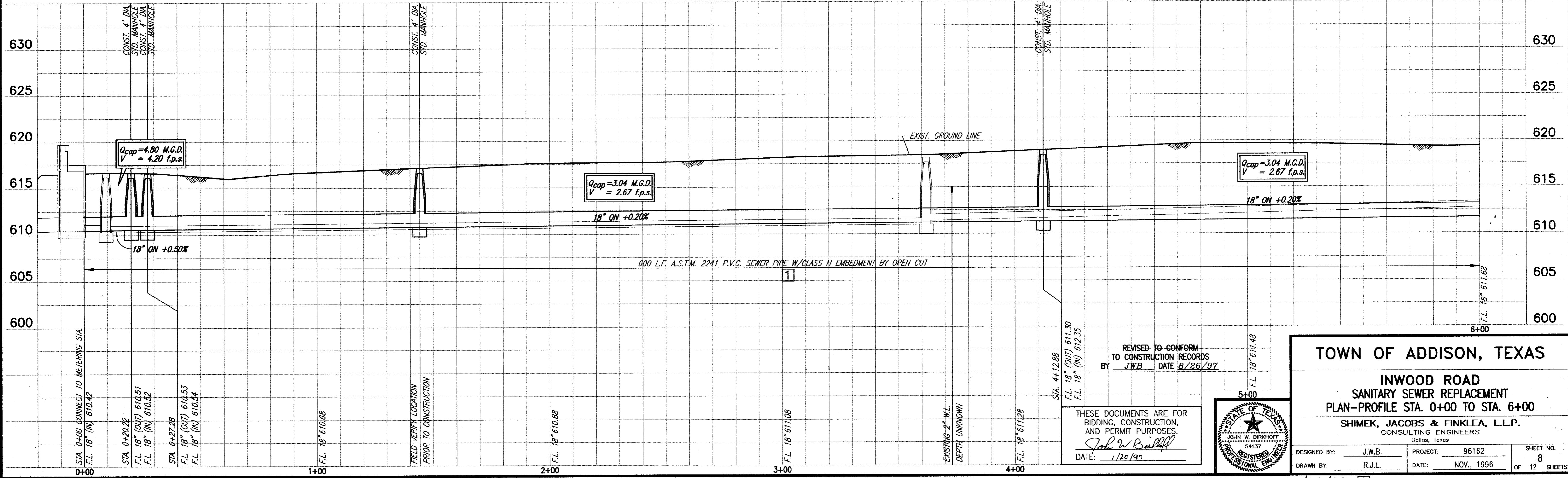
T.B.M. RS "D" CUT IN DRIVEWAY AT BANK
PARKING LOT STA. 18+28, 32' LT.
ELEV.=632.70 N 6798.4563 E 5059.2585

T.B.M. B "D" CUT IN NORTHEAST CORNER
OF TOWER STA. 4+40
ELEV.=619.16 N 5424.4635 E 4993.3687



These plans and related specifications were prepared for construction of this specific project only. Reuse of these documents is not permitted without written authorization of Shimek, Jacobs & Finklea.

NOTE:
CONTRACTOR SHALL PUMP WASTEWATER AROUND METER STATION AND CORE METER STATION WALL OR CHIP METER STATION WALL WITH WASTEWATER FLOWING IN.
THE OPENING SHALL BE SEALED WITH A WATER STOP, NON SHRINK NON METALIC GROUT AND A VERY GOOD SETTING CONCRETE (QUICK PLUG).



TOWN OF ADDISON, TEXAS

INWOOD ROAD
SANITARY SEWER REPLACEMENT
PLAN-PROFILE STA. 0+00 TO STA. 6+00

SHIMEK, JACOBS & FINKLEA, L.L.P.
CONSULTING ENGINEERS
Dallas, Texas

DESIGNED BY: J.W.B. PROJECT: 96162 SHEET NO. 8
DRAWN BY: R.J.L. DATE: NOV., 1996 OF 12 SHEETS

REVISOR: JWB DATE: 8/26/97

THESE DOCUMENTS ARE FOR BIDDING, CONSTRUCTION, AND PERMIT PURPOSES.
DATE: 1/20/97

STATE OF TEXAS
JOHN W. BIRKHOF
54137
REGISTERED PROFESSIONAL ENGINEER