

STATION EQUATION!!
 N 11890.9375, E 8991.1970
 FUT. SAN. SEW. P.I. STA. 26+53.11 (BACK) =
 FUT. SAN. SEW. P.I. STA. 26+54.67 (FWD)
 Δ = 6'02.43" LT.

WARNING
 LONE STAR GAS LINE
 NOTIFY LONE STAR GAS
 72 HOURS PRIOR TO
 EXCAVATION IN VICINITY
 OF STA. 3+54

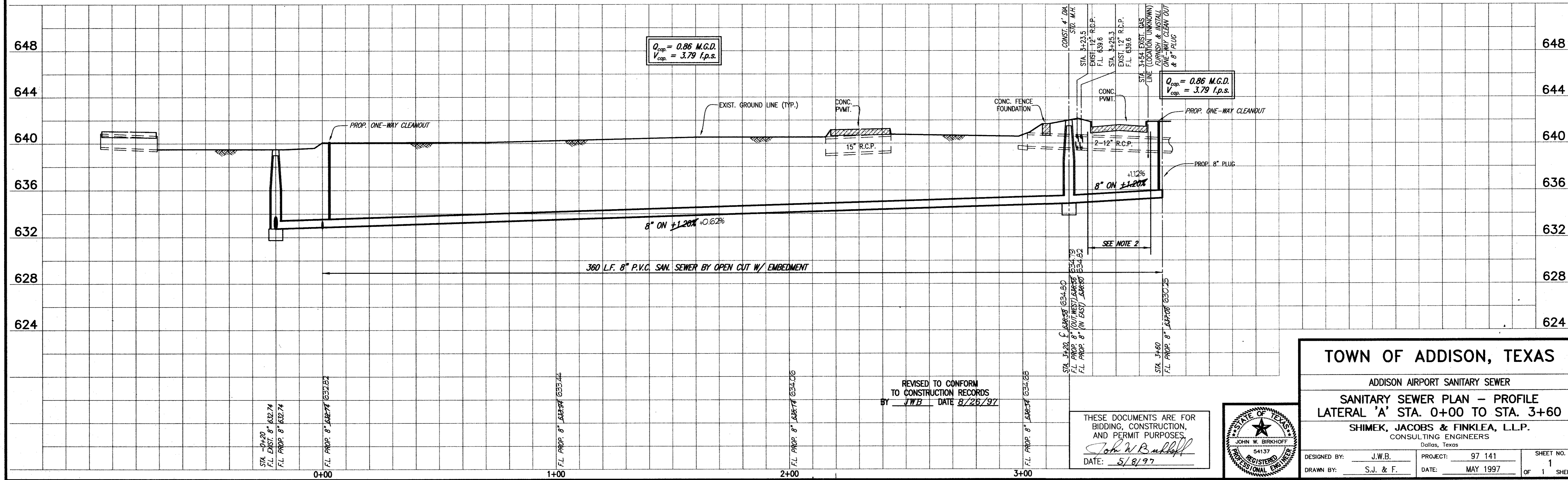
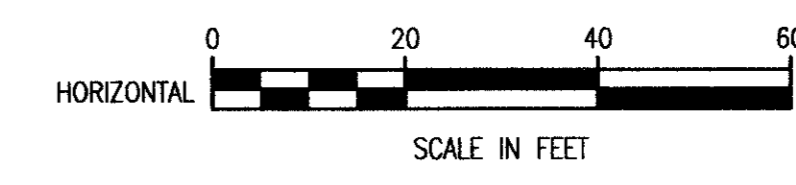
NOTES: 1. ALL DISTURBED AREAS SHALL BE RESTORED WITH SOLID SOD PLACED END TO END AND SIDE TO SIDE. CONTRACTOR SHALL WATER SOD ONCE A DAY FOR TWO WEEKS.
 2. CONTRACTOR SHALL HAVE THE OPTION TO OPEN CUT THE ROADWAY DURING NIGHT TIME HOURS OR TO BORE UNDER THE ROADWAY.

QUANTITIES		
1. 8 INCH SANITARY SEWER LINE	360	L.F.
2. STANDARD 4 FOOT DIA. MANHOLE	1	EA.
3. ONE-WAY CLEANOUT	2	EA.
4. 8 INCH x 8 INCH TEE	1	EA.
5. CONNECTION TO EXIST. SAN. SEW. LINE	1	EA.
6. SOLID SOD	1300	S.F.
7. ROADWAY CROSSING	1	L.S.
8. FENCE REMOVAL & REPLACEMENT	1	L.S.
9. DRIVEWAY REMOVAL & REPLACEMENT	13.2	S.Y.
10. 15 INCH R.C.P. REMOVAL & REPLACEMENT	28	L.F.
11. CONCRETE RIP RAP & HEADWALL REMOVAL & REPLACEMENT	1	L.S.

**ADDISON MUNICIPAL AIRPORT ADDITION
 BLOCK 1
 LOT 1**

T.B.M. #6
 N 11809.3582, E 8839.6291
 "T" CUT IN NORTHEAST CORNER
 OF BUILDING AT PROP. WATER LINE
 STA. 19+10.50, 67.41' LT.
 ELEV. 641.21
 T.B.M. AP-2
 N 11901.7151, E 8905.0072
 NORTH RIM OF EXISTING S.S.M.H.
 AT PROP. SAN. SEWER
 STA. 28+81.13, 23.91' RT.
 ELEV. 640.53

HATCHING INDICATES REMOVAL & REPLACING OF CONCRETE PAVEMENT (SEE PROFILE)

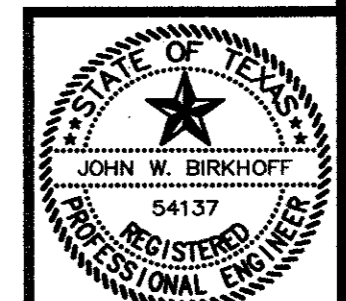


$Q_{cap} = 0.86$ M.G.D.
 $V_{cap} = 3.79$ f.p.s.

$Q_{cap} = 0.86$ M.G.D.
 $V_{cap} = 3.79$ f.p.s.

REVISED TO CONFORM TO CONSTRUCTION RECORDS
 BY JWB DATE 8/26/97

THESE DOCUMENTS ARE FOR BIDDING, CONSTRUCTION, AND PERMIT PURPOSES.
 John W. Bullock
 DATE: 5/8/97



TOWN OF ADDISON, TEXAS
 ADDISON AIRPORT SANITARY SEWER
 SANITARY SEWER PLAN - PROFILE
 LATERAL 'A' STA. 0+00 TO STA. 3+60
 SHIMEK, JACOBS & FINKLEA, L.L.P.
 CONSULTING ENGINEERS
 Dallas, Texas

DESIGNED BY: J.W.B. PROJECT: 97 141 SHEET NO. 1
 DRAWN BY: S.J. & F. DATE: MAY 1997 OF 1 SHEETS