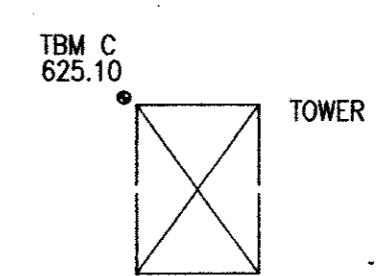


D. P. & L.  
VOL. 4633, PG. 308

NOTE:  
CONTRACTOR SHALL FURNISH, INSTALL, MAINTAIN AND REMOVE TEMPORARY CONSTRUCTION FENCE ALONG EXISTING EASEMENT LINE ABUTTING DON HERRING MITSUBISHI AND THE PRINCETON WHEN PERMANENT FENCE IS REMOVED FOR CONVENIENCE OF CONSTRUCTION. TEMPORARY FENCE SHALL INCLUDE POST EVERY 10 FEET WITH SIX FOOT CHAIN LINK FENCE. ATTACH CHAIN LINK FENCE AT FOUR (4) POINTS ON EVERY POST.

CAUTION II  
POWER CABLE  
IN AREA.



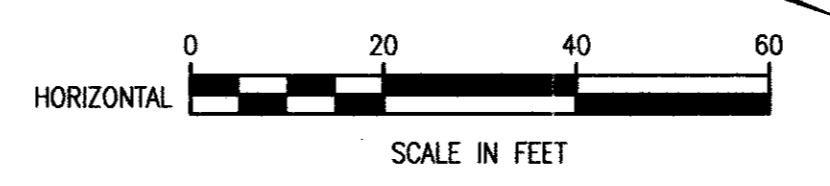
MATCH LINE STA. 6+00

MATCH LINE STA. 12+00

TABLE OF COORDINATES		
POINT	NORTH	EAST
PT#2	5356.7274	5000.0000
PT#67	5784.6567	4993.6116
1/2" I.P.F. STA 7+80	5764.4900	5026.3648
STA. 7+88.96	5773.7025	5032.8689

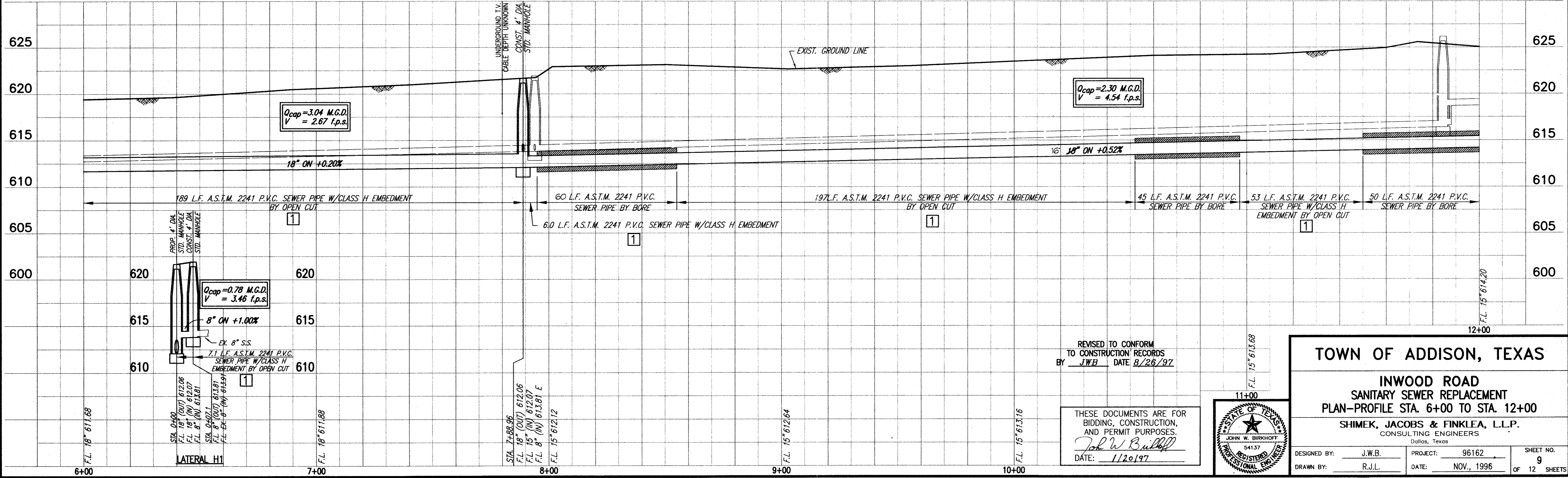
T.B.M. RS "□" CUT IN DRIVEWAY AT BANK PARKING LOT STA. 18+28.32' LT. ELEV.=632.70 N 6798.4563 E 5059.2585  
T.B.M. C "□" CUT IN SOUTHWEST CORNER OF TOWER STA. 10+68 ELEV.=625.10 N 6050.7724 E 4957.8074

FARMERS BRANCH CITY LIMITS  
ADDISON CITY LIMITS



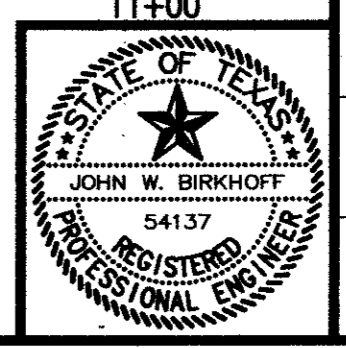
NOTE:  
CONTRACTOR SHALL ABANDON MH #H9. ABANDON SHALL INCLUDE PLACING 2000 PSI (N.C.T.C.O.G. 7.4.5 CLASS B) CONCRETE 12 INCHES ABOVE SPRING LINE OF PIPES, BACKFILLING IN 8 INCH LIFTS WITH EXCAVATED OR IMPORTED MATERIAL TO THE COVER. REPLACE COVER, WELD TO RING.

THE PRINCETON  
14651 DALLAS NORTH PKWY.  
MULTI STORY PARKING GARAGE



REVISED TO CONFORM TO CONSTRUCTION RECORDS BY JWB DATE 8/26/97

THESE DOCUMENTS ARE FOR BIDDING, CONSTRUCTION, AND PERMIT PURPOSES.  
John W. Bullock  
DATE: 1/20/97



TOWN OF ADDISON, TEXAS

INWOOD ROAD  
SANITARY SEWER REPLACEMENT  
PLAN—PROFILE STA. 6+00 TO STA. 12+00

SHIMEK, JACOBS & FINKLEA, L.L.P.  
CONSULTING ENGINEERS  
Dallas, Texas

DESIGNED BY: J.W.B. PROJECT: 96162 SHEET NO. 9  
DRAWN BY: R.J.L. DATE: NOV., 1996 OF 12 SHEETS