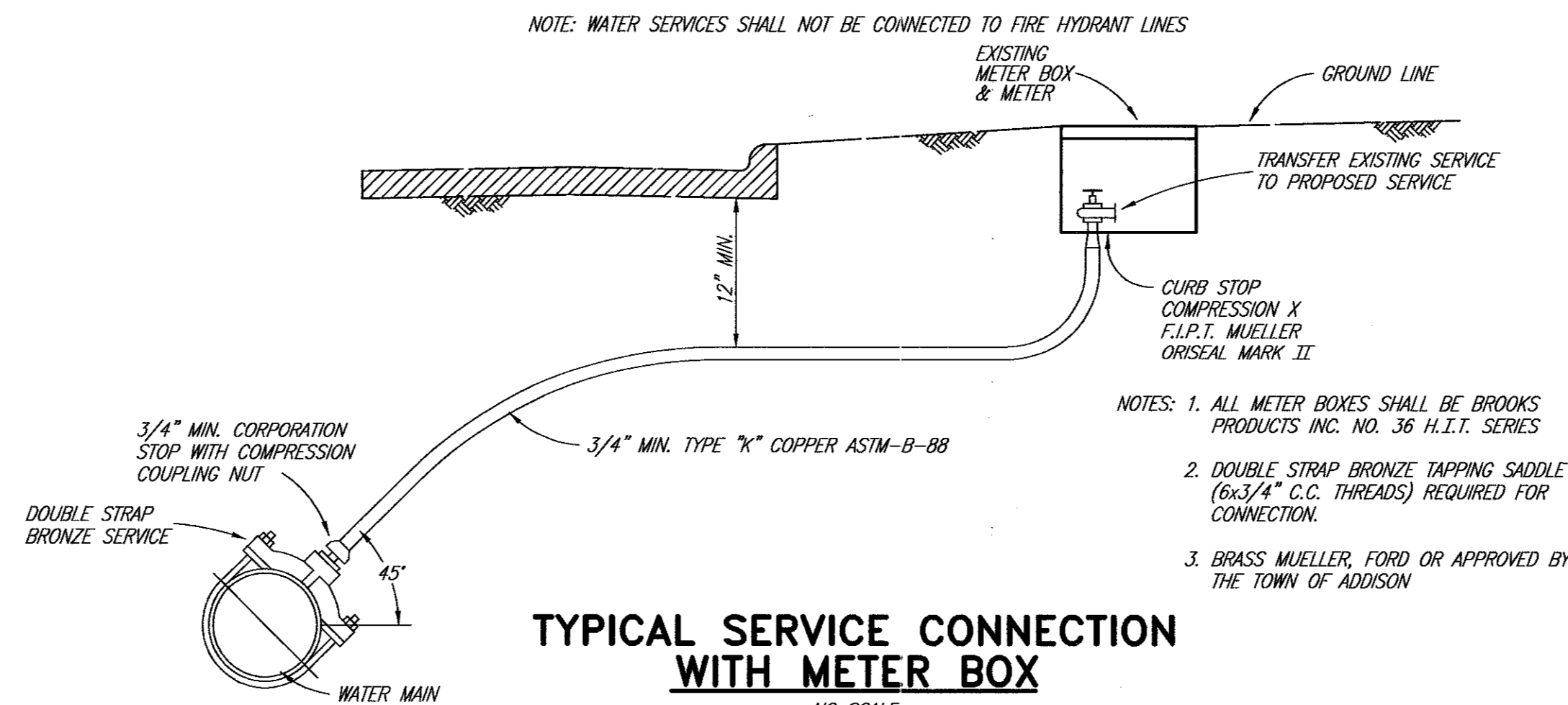


NOTE: DOWEL BARS SHALL BE DRILLED INTO PAVEMENT HORIZONTALLY BY USE OF A MECHANICAL RIG. DRILLING BY HAND IS NOT ACCEPTABLE. PUSHING DOWEL BARS INTO GREEN CONCRETE IS NOT ACCEPTABLE.

CONNECTION TO EXISTING PAVEMENT

NOT TO SCALE

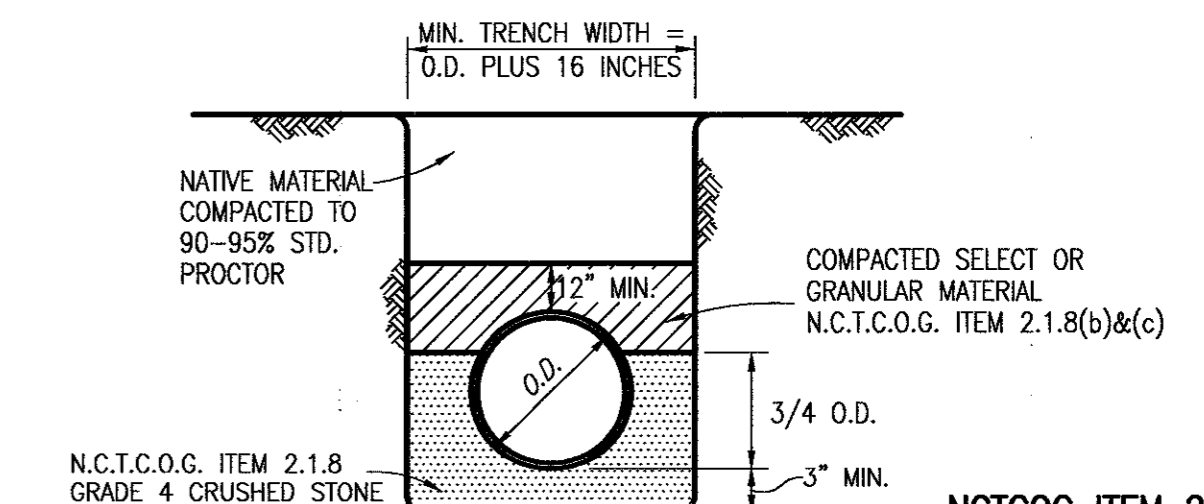


NOTES: 1. ALL METER BOXES SHALL BE BROOKS PRODUCTS INC. NO. 36 H.I.T. SERIES
2. DOUBLE STRAP BRONZE TAPPING SADDLE (6x3/4" C.C. THREADS) REQUIRED FOR CONNECTION.
3. BRASS MUELLER, FORD OR APPROVED BY THE TOWN OF ADDISON

TYPICAL SERVICE CONNECTION WITH METER BOX

NO SCALE

TYPE "K" COPPER SERVICE PIPE SOFT ANNEALED	DOUBLE STRAP BRONZE SERVICE SADDLE WITH C.C. THREADS
3/4" INCH	3/4" INCH
1 INCH	1 INCH
1 1/2 INCH	1 1/2 INCH
2 INCH	2 INCH

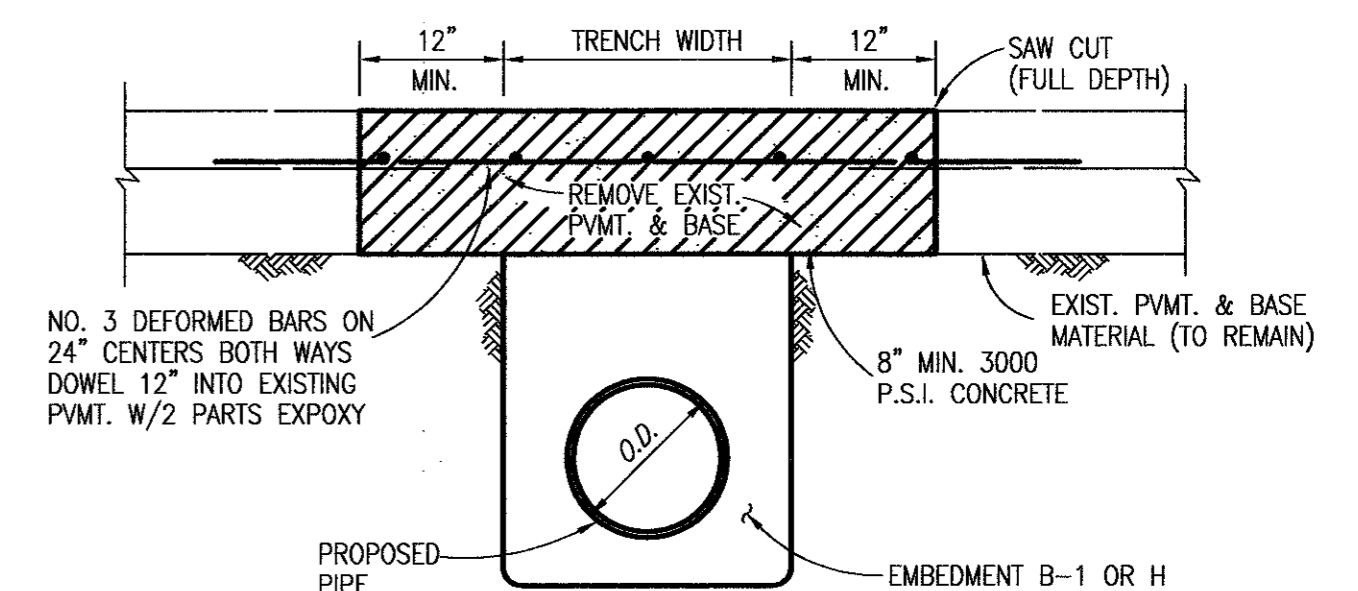


CLASS B-1 EMBEDMENT P.V.C. WATER INSTALLATION

NCTCOG ITEM 2.1.8 GRADE 4 STANDARD CRUSHED STONE

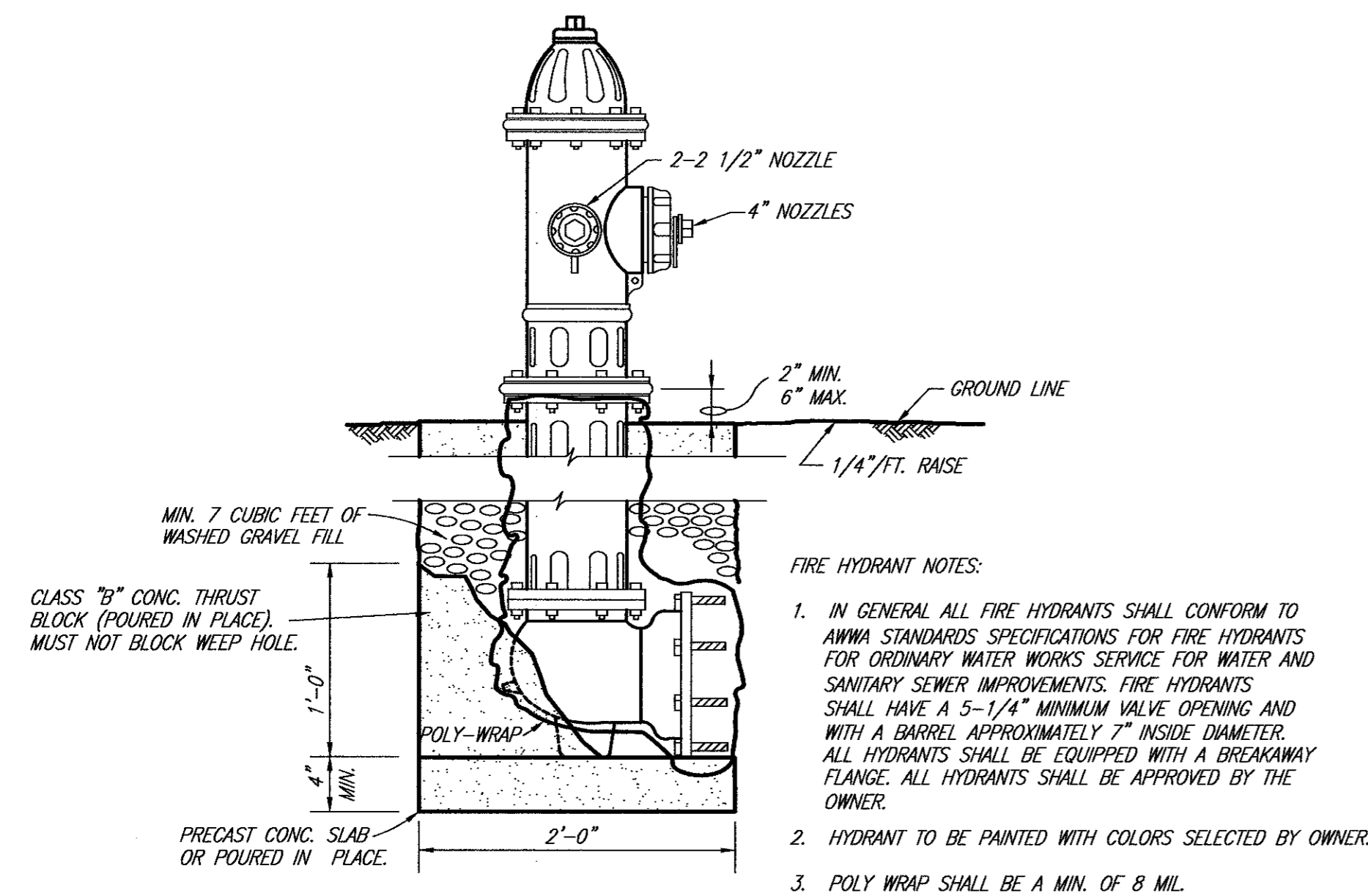
SIEVE SIZE	% RETAINED
1-1/2 INCH	0
1 INCH	0-5
1/2 INCH	45-75
NO. 4	90-100
NO. 8	95-100

BRIDGE PORT CRUSHED LIMESTONE



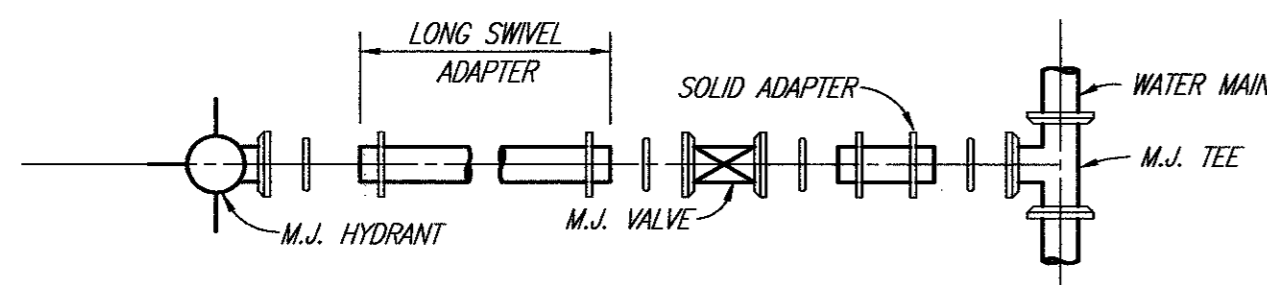
EMBEDMENT AT DRIVEWAY CUT

NOT TO SCALE



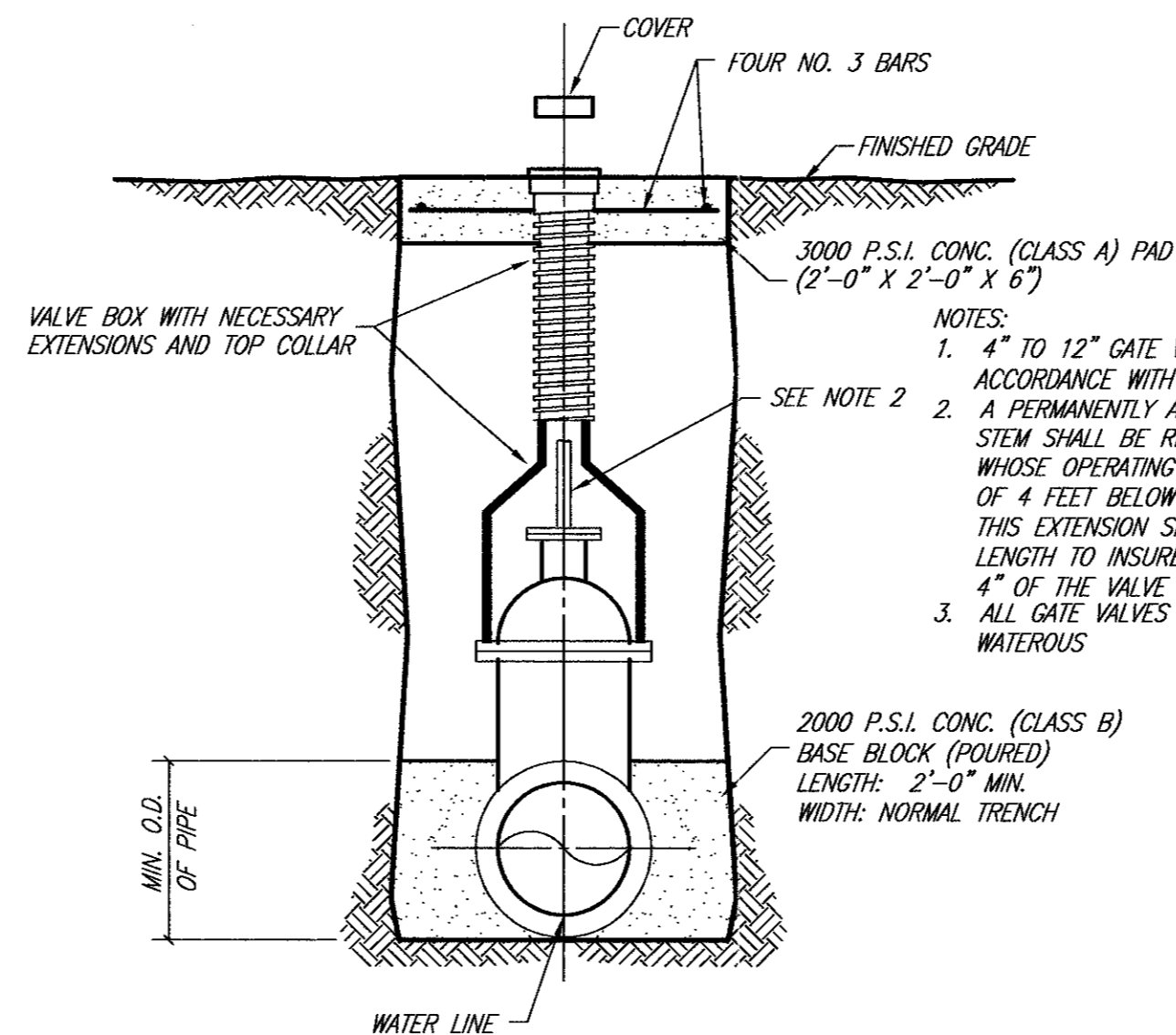
FIRE HYDRANT NOTES:

1. IN GENERAL ALL FIRE HYDRANTS SHALL CONFORM TO AWWA STANDARDS SPECIFICATIONS FOR FIRE HYDRANTS FOR ORDINARY WATER WORKS SERVICE FOR WATER AND SANITARY SEWER IMPROVEMENTS. FIRE HYDRANTS SHALL HAVE A 5-1/4" MINIMUM VALVE OPENING AND WITH A BARREL APPROXIMATELY 7" INSIDE DIAMETER. ALL HYDRANTS SHALL BE EQUIPPED WITH A BREAKAWAY FLANGE. ALL HYDRANTS SHALL BE APPROVED BY THE OWNER.
2. HYDRANT TO BE PAINTED WITH COLORS SELECTED BY OWNER.
3. POLY WRAP SHALL BE A MIN. OF 8 MIL.



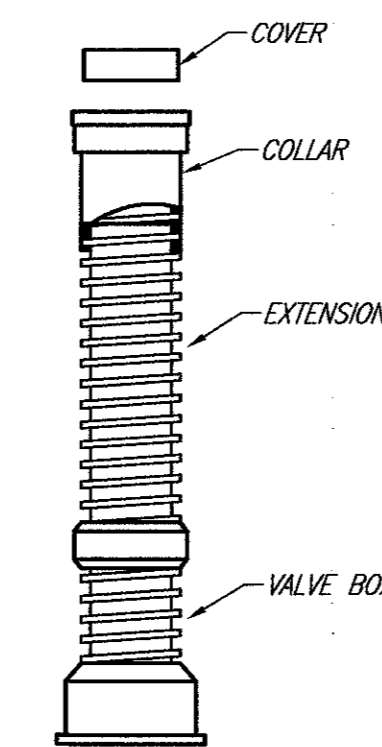
TYPICAL FIRE HYDRANT INSTALLATION

NO SCALE



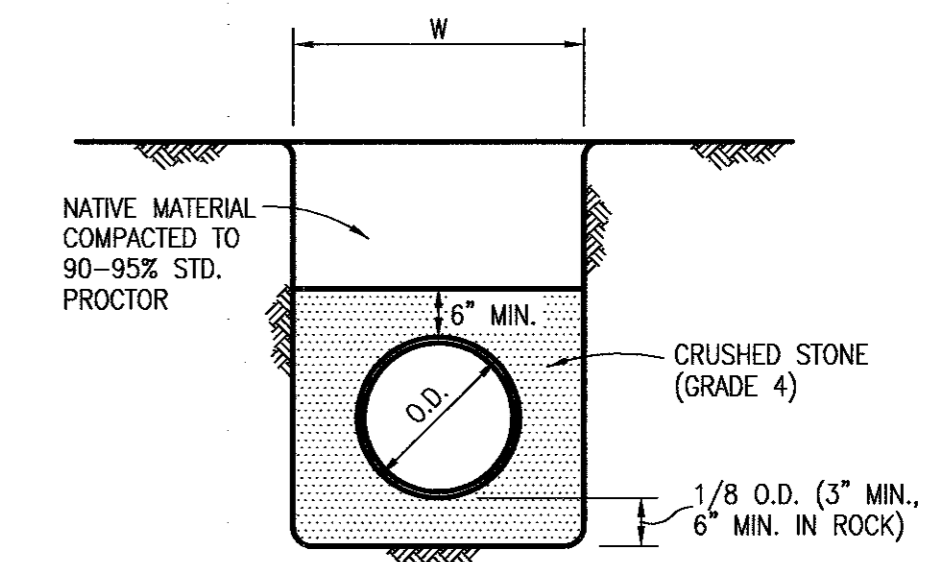
VALVE SETTING & BOX

NO SCALE



VALVE BOX WITH EXTENSION

NO SCALE



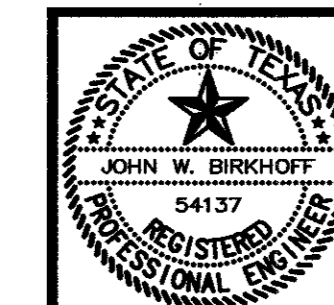
CLASS H EMBEDMENT

P.V.C. PIPE ONLY STD. P.V.C. SEWER

These plans and related specifications were prepared for construction of this specific project only. Reuse of these documents is not permitted without written authorization of Shimek, Jacobs & Finklea.

REVISED TO CONFORM TO CONSTRUCTION RECORDS BY JWB DATE 8/26/97

THESE DOCUMENTS ARE FOR BIDDING, CONSTRUCTION, AND PERMIT PURPOSES.
John W. Bullard
DATE: 11/15/96



TOWN OF ADDISON, TEXAS

DETAIL SHEET

SHIMEK, JACOBS & FINKLEA
CONSULTING ENGINEERS
Dallas, Texas

DESIGNED BY: <u>J.W.B.</u>	PROJECT: <u>96104</u>	SHEET NO. <u>11</u>
DRAWN BY: <u>R.J.L.</u>	DATE: <u>NOV., 1996</u>	OF 12 SHEETS