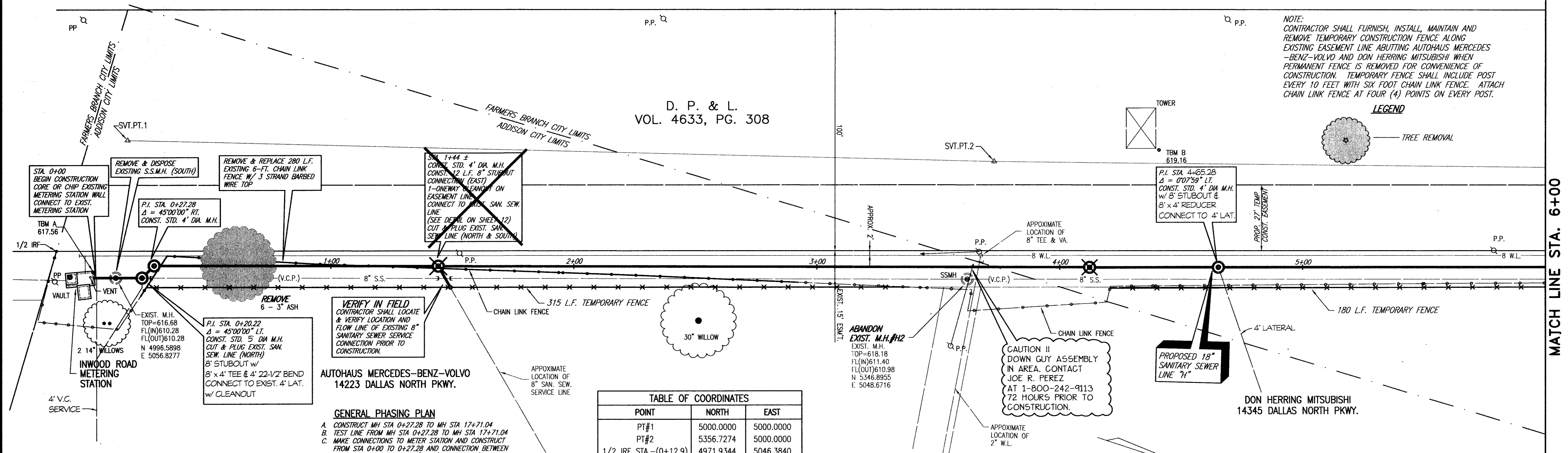
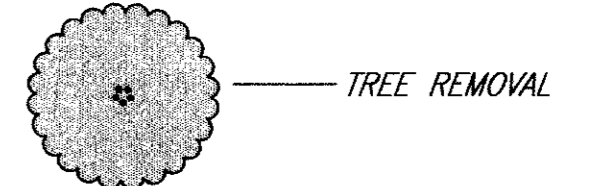


D. P. & L.
VOL. 4633, PG. 308

NOTE:
CONTRACTOR SHALL FURNISH, INSTALL, MAINTAIN AND REMOVE TEMPORARY CONSTRUCTION FENCE ALONG EXISTING EASEMENT LINE ABUTTING AUTOHAUS MERCEDES-BENZ-VOLVO AND DON HERRING MITSUBISHI WHEN PERMANENT FENCE IS REMOVED FOR CONVENIENCE OF CONSTRUCTION. TEMPORARY FENCE SHALL INCLUDE POST EVERY 10 FEET WITH SIX FOOT CHAIN LINK FENCE. ATTACH CHAIN LINK FENCE AT FOUR (4) POINTS ON EVERY POST.

LEGEND



VERIFY IN FIELD
CONTRACTOR SHALL LOCATE & VERIFY LOCATION AND FLOW LINE OF EXISTING 8" SANITARY SEWER SERVICE CONNECTION PRIOR TO CONSTRUCTION.

AUTOHAUS MERCEDES-BENZ-VOLVO
14223 DALLAS NORTH PKWY.

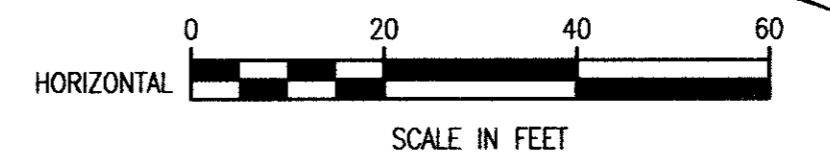
GENERAL PHASING PLAN

- CONSTRUCT MH STA 0+27.28 TO MH STA 17+71.04
- TEST LINE FROM MH STA 0+27.28 TO MH STA 17+71.04
- MAKE CONNECTIONS TO METER STATION AND CONSTRUCT FROM STA 0+00 TO 0+27.28 AND CONNECTION BETWEEN MH STA 17+71.04 TO MH #110 (LATERAL H-2)
- CONSTRUCT MH STA 17+71.04 TO MH STA 18+31.64 AND MAKE CONNECTION BETWEEN MH STA 7+88.96 AND MH #13 (LATERAL H-1)
- PROVIDE ADDITION WITH COLOR TV INSPECTION OF COMPLETED LINES IN "C" & "D" ABOVE.

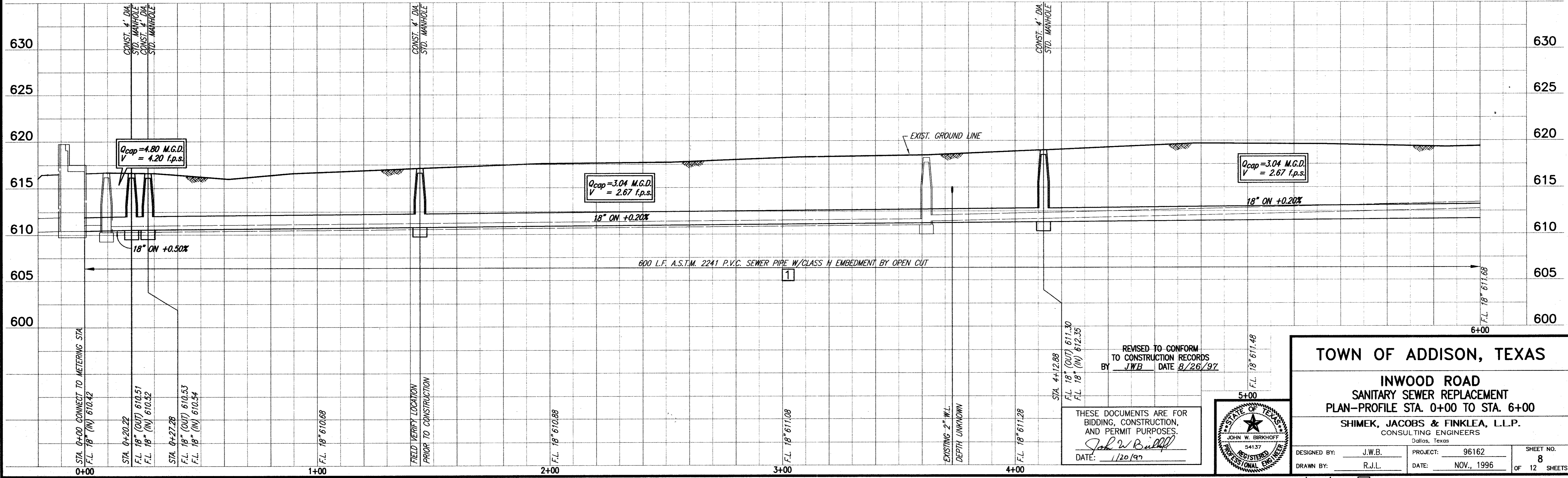
POINT	NORTH	EAST
PT#1	5000.0000	5000.0000
PT#2	5356.7274	5000.0000
1/2 IRF STA. -(0+12.9)	4971.9344	5046.3840
P.I. STA. 0+20.22	5007.3788	5056.5765
P.I. STA. 0+27.28	5012.2511	5051.4719
P.I. STA. 4+12.28	5397.1468	5042.5105

T.B.M. RS "Q" CUT IN DRIVEWAY AT BANK PARKING LOT STA. 18+28, 32' LT. ELEV.=632.70 N 6798.4563 E 5059.2585
T.B.M. B "Q" CUT IN NORTHEAST CORNER OF TOWER STA. 4+40 ELEV.=619.16 N 5424.4635 E 4993.3687

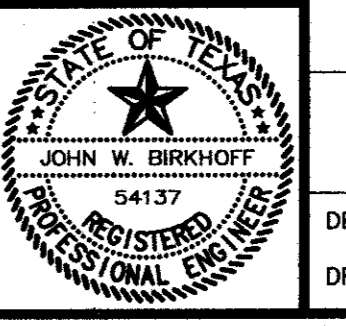
CAUTION !!
DOWN GUY ASSEMBLY IN AREA. CONTACT JOE R. PEREZ AT 1-800-242-9113 72 HOURS PRIOR TO CONSTRUCTION.



These plans and related specifications were prepared for construction of this specific project only. Reuse of these documents is not permitted without written authorization of Shimek, Jacobs & Finklea.



REVISED TO CONFORM TO CONSTRUCTION RECORDS BY JWB DATE 8/26/97
THESE DOCUMENTS ARE FOR BIDDING, CONSTRUCTION, AND PERMIT PURPOSES.
DATE: 1/20/97



TOWN OF ADDISON, TEXAS
INWOOD ROAD
SANITARY SEWER REPLACEMENT
PLAN-PROFILE STA. 0+00 TO STA. 6+00
SHIMEK, JACOBS & FINKLEA, L.L.P.
CONSULTING ENGINEERS
Dallas, Texas

DESIGNED BY: J.W.B.	PROJECT: 96162	SHEET NO. 8
DRAWN BY: R.J.L.	DATE: NOV., 1996	OF 12 SHEETS