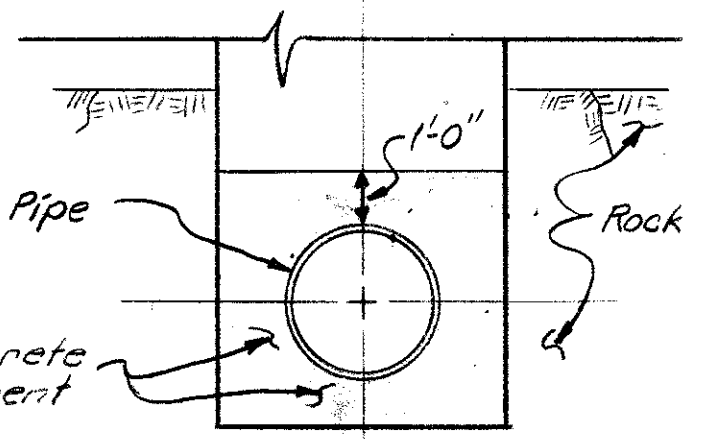


NOTE:
Air Valve Installation
Shown On Standard
Appurtenance Sheet 4140-11

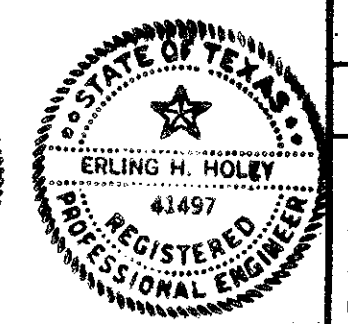
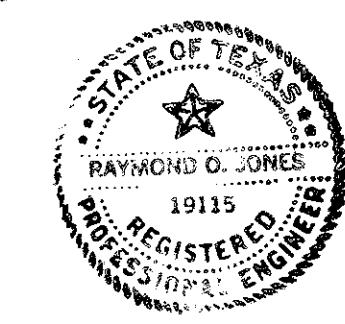
CAUTION

NOTE:
Concrete walls are not intended
to resist hydrostatic thrust
of 48" pipe, with B.F.V. closed.
Block 48" pipe at bells outside
of vault to carry hydrostatic
thrust.



2000 CONCRETE
ENCASEMENT DETAIL
No Scale

DATE	4/3/81 (1) Added Type Of Pipe Material.	W.E.M.
REVISION		BY
YARD PIPING PROFILE		
PUMPS 1A & 2A		
BELTWOOD PUMP STATION		
DALLAS WATER UTILITIES		
CITY OF DALLAS, TEXAS		
DESIGN	CONTRACT NO.	SHEET NO.
DRAWN <i>W.L.T., L.M.</i>	81-7	4
TRACED	FILE NO.	
CHECKED	640 Q-700B	20
DATE	JAN 28/1981	



B.M. - cut on S.E. corner of Pump Pits Structure
behind Pump House @ Beltwood Pump Station
Elev. 630.02.