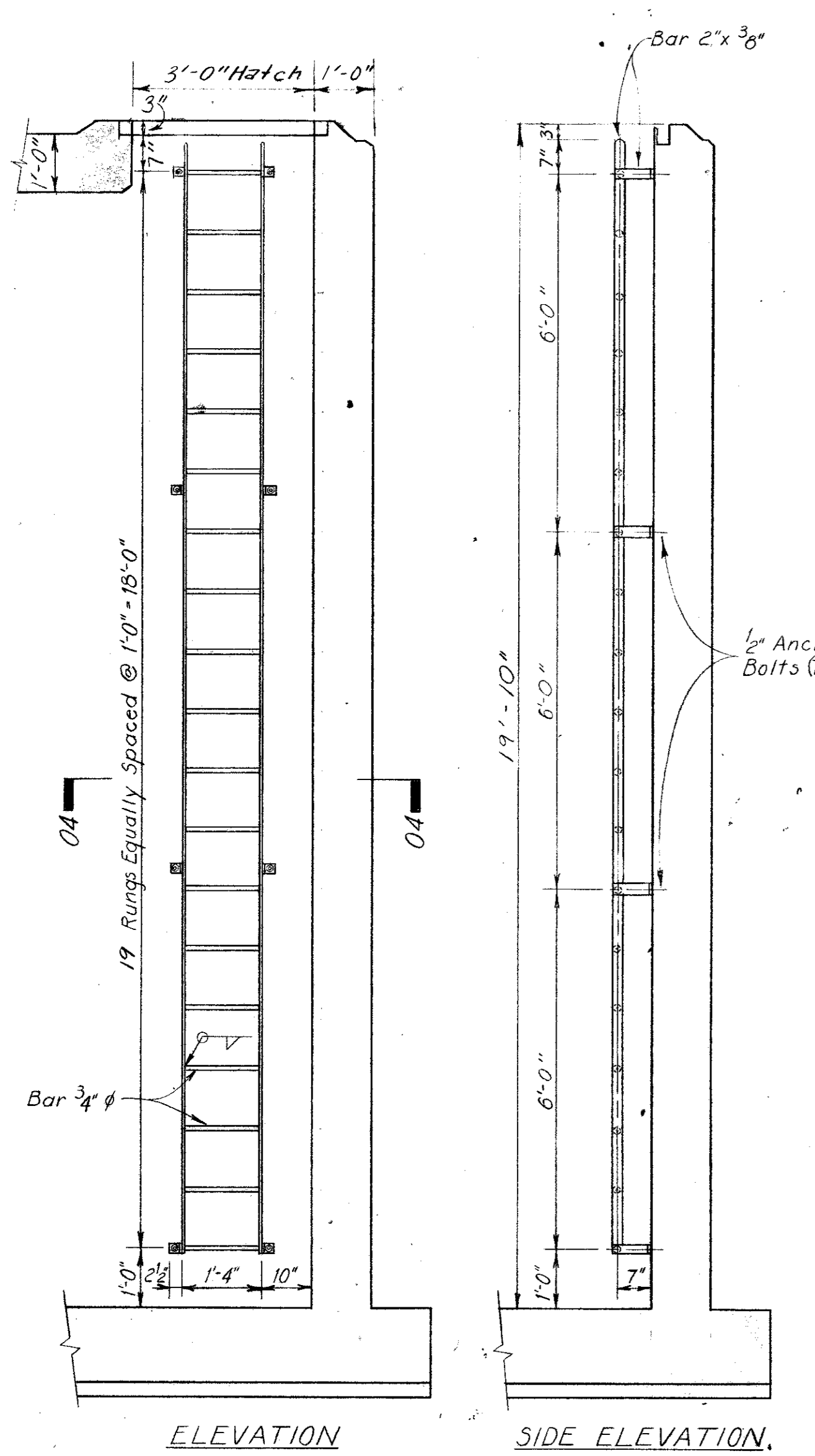
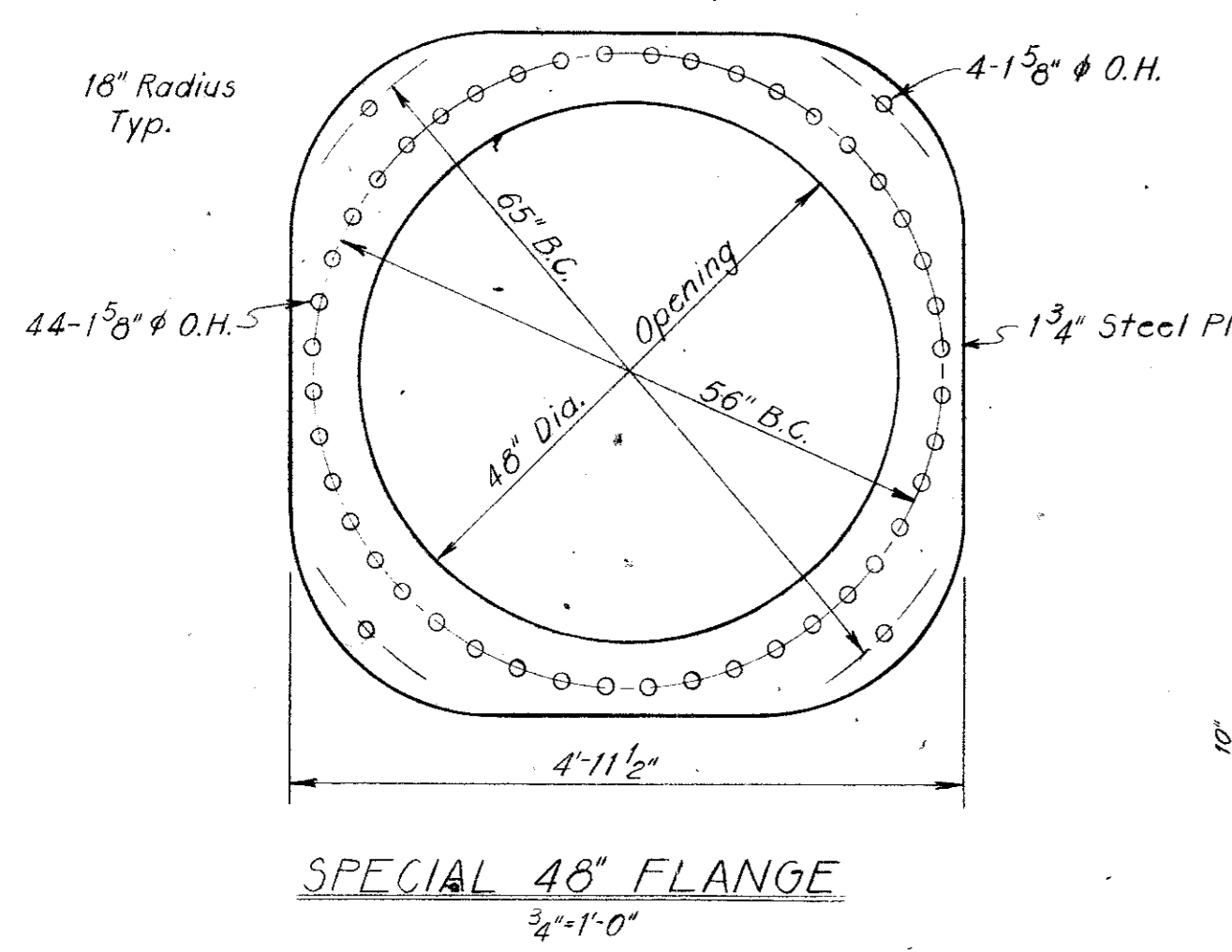


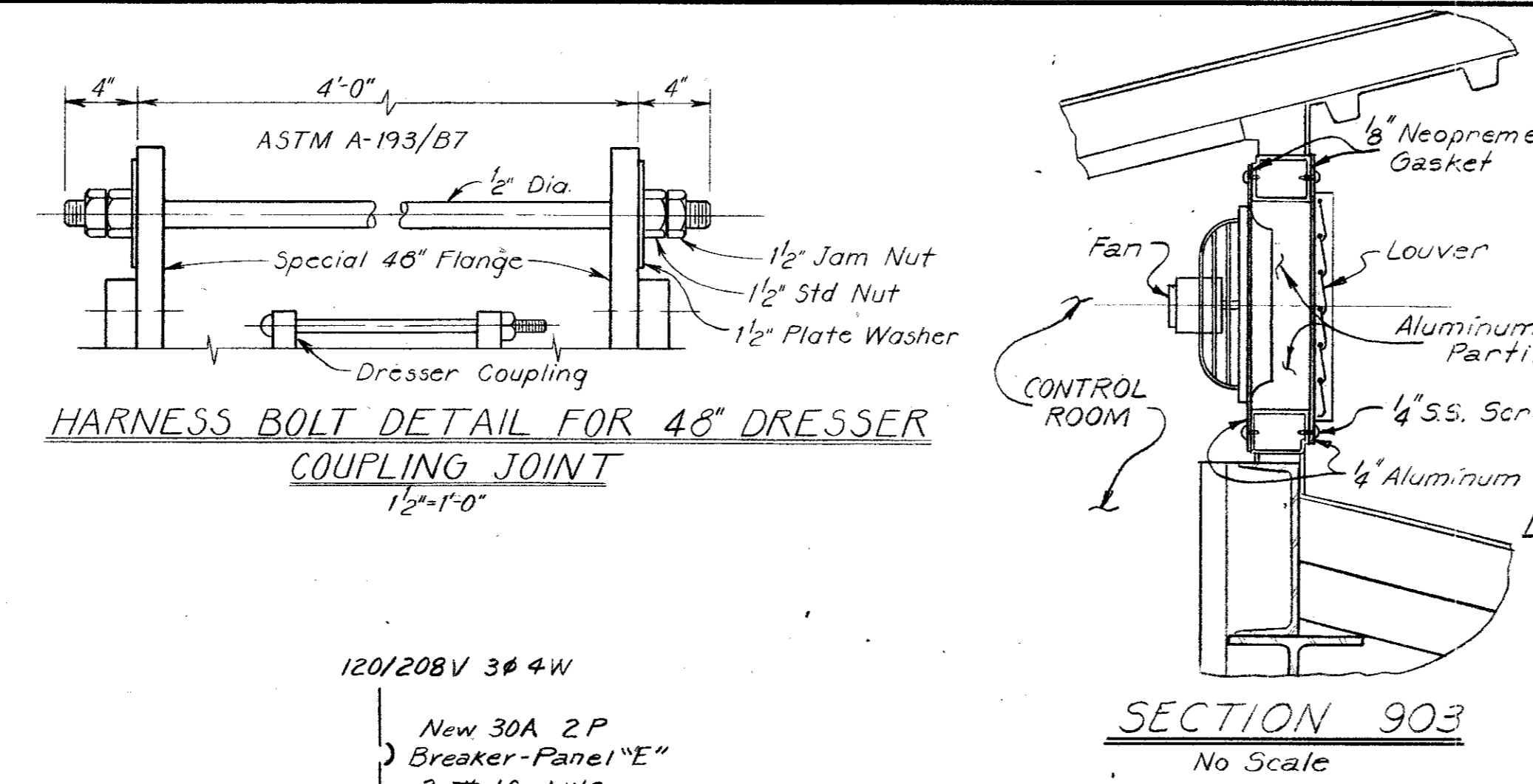
NOTE:
Hot Dip Galvanize
Ladder After Fabrication.



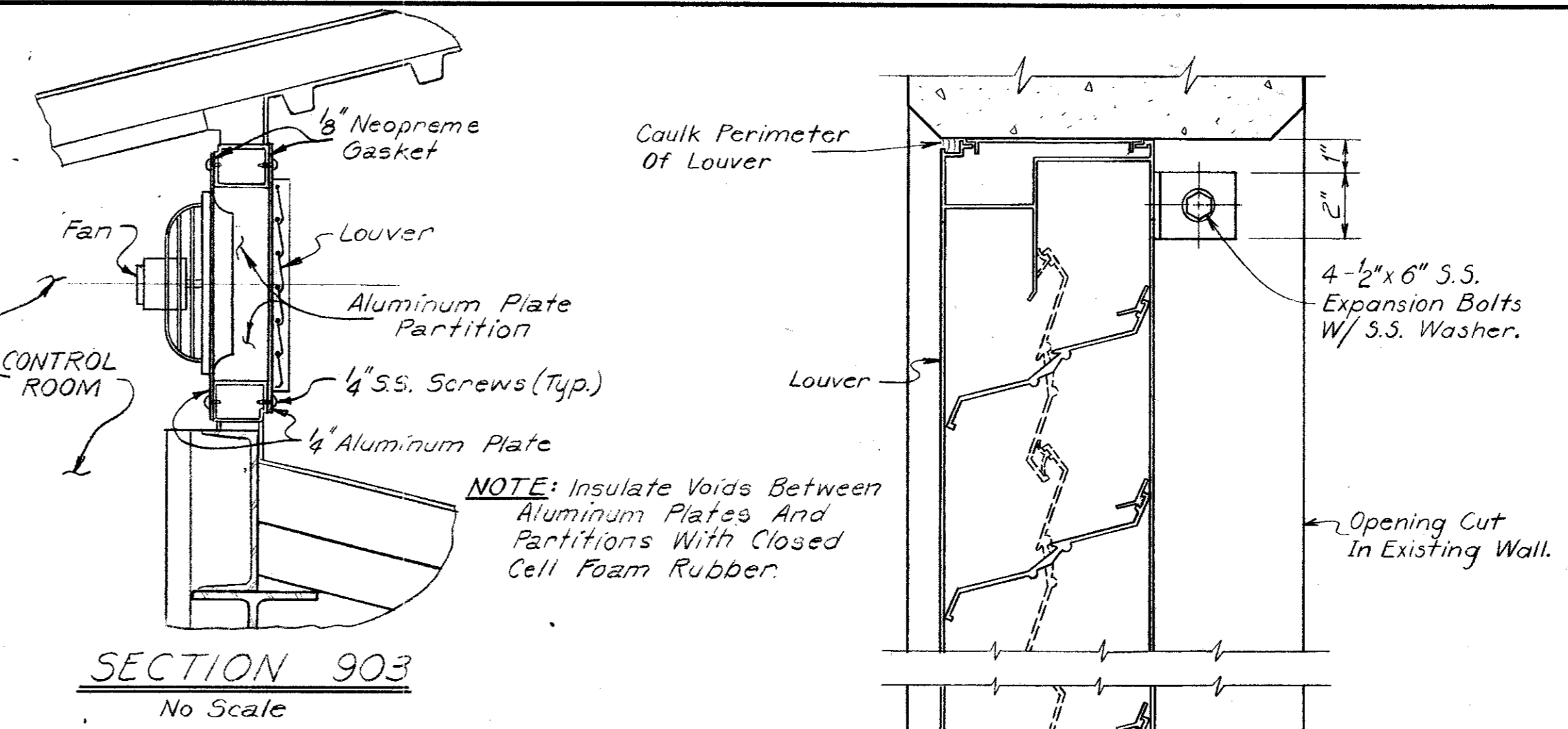
LADDER DETAIL
1/2" = 1'-0"



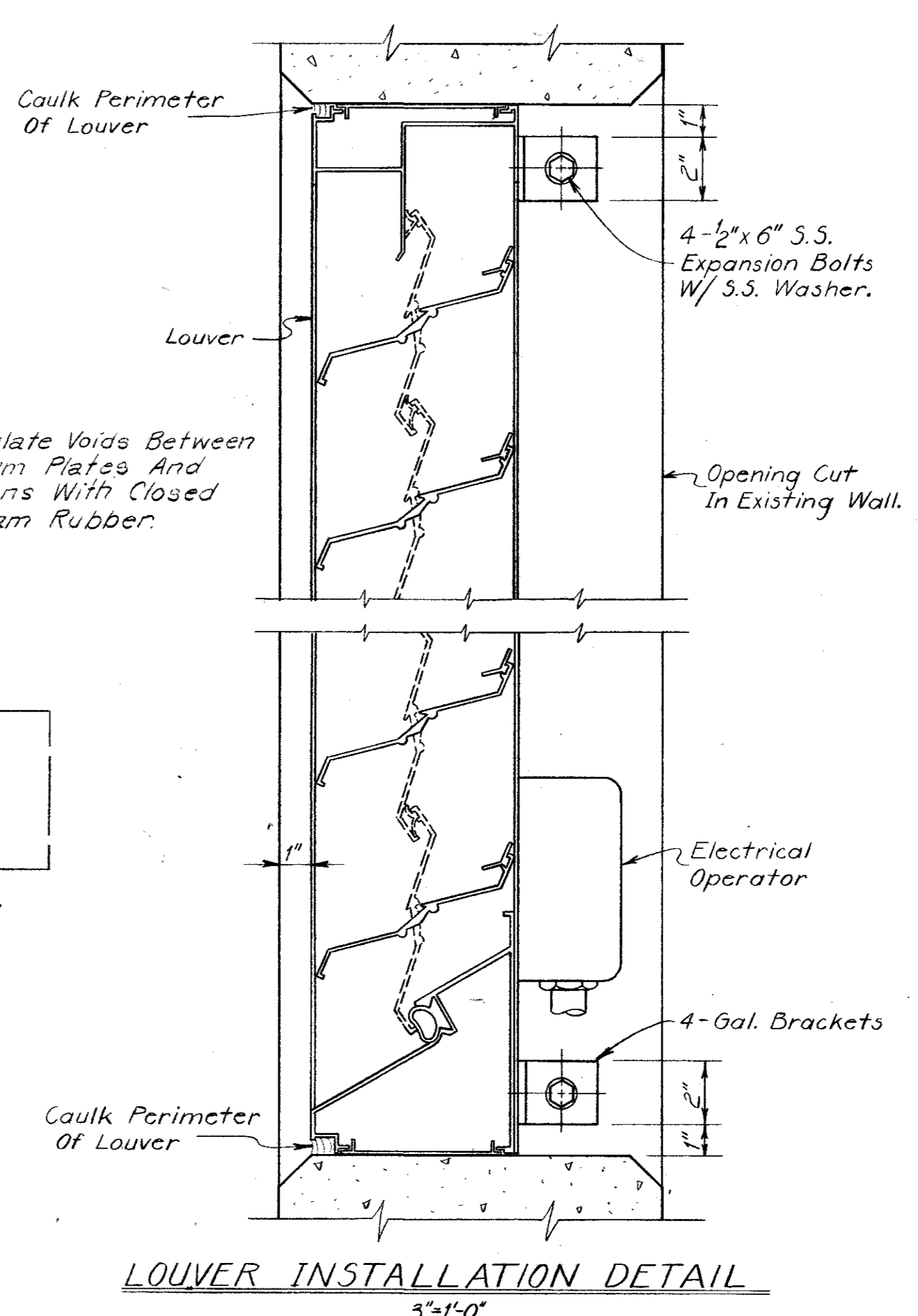
SPECIAL 48" FLANGE
1/2" = 1'-0"



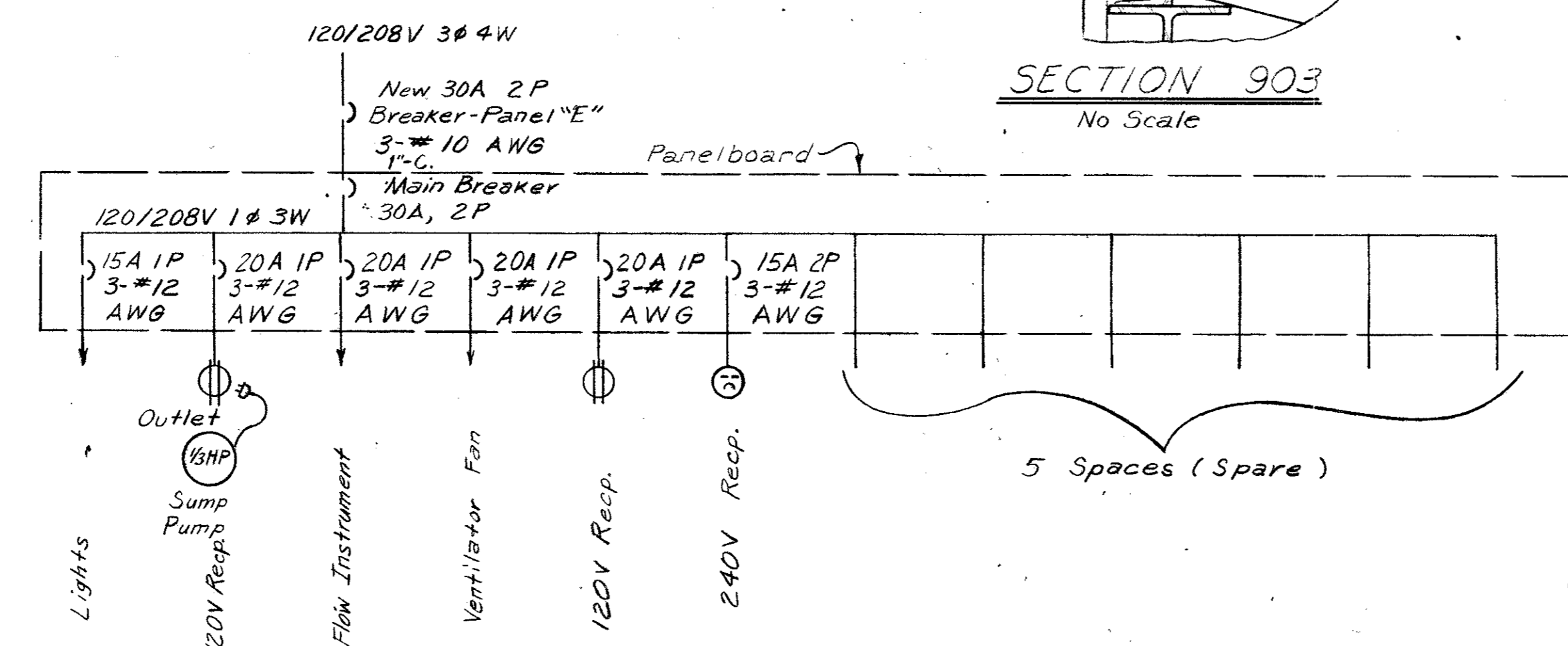
HARNES BOLT DETAIL FOR 48" DRESSER
COUPLING JOINT
1/2" = 1'-0"



SECTION 903
No Scale

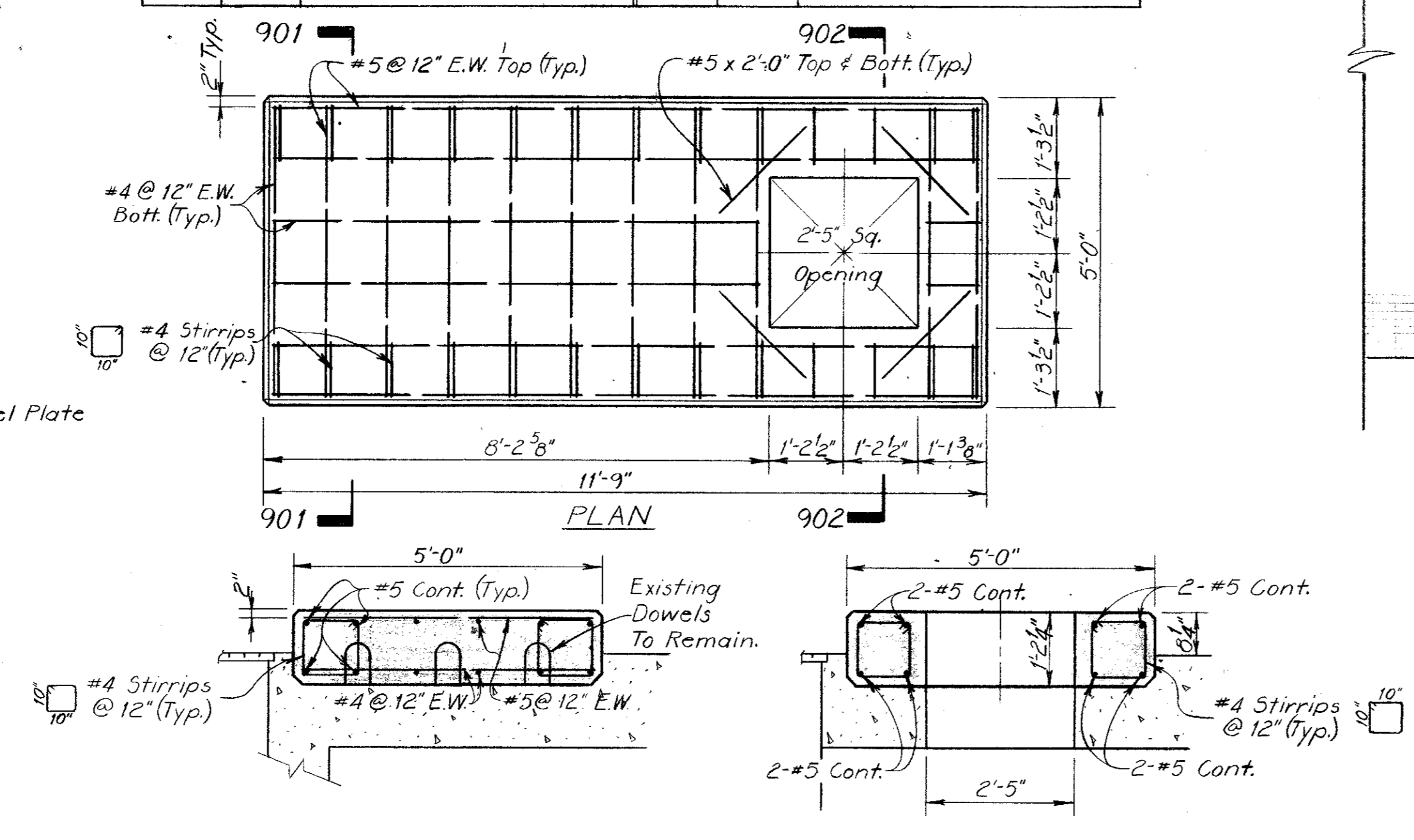


LOUVER INSTALLATION DETAIL
3/8" = 1'-0"

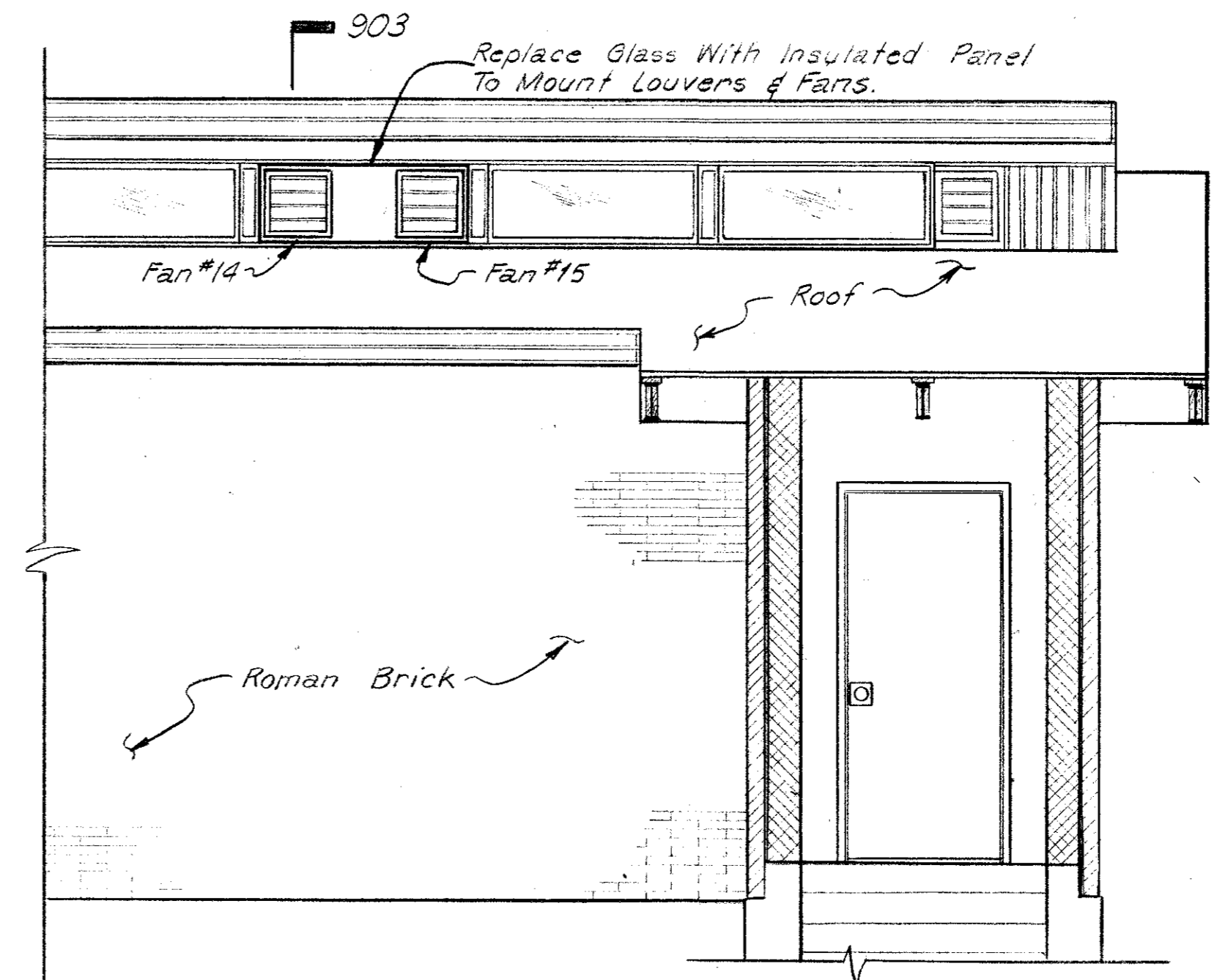


PANEL "M" ONE LINE DIAGRAM

| PANEL "M" | | | | | |
|--|-----------|-----------------|----------|-----------|-----------------|
| VOLTAGE 120/208V 1Ø, 3W AMPERAGE 100 NEUTRAL (SOLID) X GROUND | | | | | |
| MAIN BREAKER: <input checked="" type="checkbox"/> YES <input type="checkbox"/> NO SIZE: 30A 2P | | | | | |
| CKT. NO. | BKR. SIZE | DESCRIPTION | CKT. NO. | BKR. SIZE | DESCRIPTION |
| 1 | 15A 1P | Lights | 2 | 20A 1P | Ventilator Fan |
| 3 | 20A 1P | Sump Pump | 4 | 20A 1P | 120V Receptical |
| 5 | 20A 1P | Flow Instrument | 6 | 15A 2P | 240V Receptical |
| 7 | | | 8 | | |
| 9 | | | 10 | | |
| 11 | | | 12 | | |



SECTION 901 SECTION 902
PUMP FOUNDATION REINFORCEMENT DETAIL
1/2" = 1'-0"



FAN & LOUVER INSTALLATION
DETAIL
3/8" = 1'-0"
(PARTIAL NORTH ELEVATION CONTROL ROOM)

| FAN SCHEDULE | | |
|--------------|---|-----------------------------|
| NO | DESCRIPTION | LOCATION |
| 1 | Existing Fan And Louver, To Be Relocated From Roof. | Roof Hatch #1 |
| 2 | ILG Type, UBC 300, 1 1/2 H.P., 618 RPM, 6007 CFM @ 1/8" S.P., With Motor Operated Louver & Hinged Base. | Roof Hatch #2 |
| 3 | " | Roof Hatch #3 |
| 4 | " | Roof Hatch #4 |
| 5 | " | Roof Hatch #5 |
| 6 | " | Roof Hatch #6 |
| 7 | Existing Fan And Louver In Place. | Roof Hatch #7 |
| 8 | ILG Type, PTD Direct Drive 1725 RPM, 1/8 H.P. Tube Axial Duct Fan 1060 CFM @ 1/8" S.P. | Pipe Gallery |
| 9 | " | " |
| 10 | " | " |
| 11 | " | " |
| 12 | " | " |
| 13 | " | " |
| 14 | ILG Type PV Propeller Fan Size Ø3 1550 RPM 1/40 H.P. 289 CFM @ 1/8" S.P. W/ Wire Ground.* | Control Room Ceiling Window |
| 15 | " | " |
| 16 | ILG No. CRF 122 or equal | Meter Vault |

* Or Approved Equal

| PAINT SCHEDULE | | | |
|-------------------------|---|--|----------------|
| ITEM | PRIMER COAT DFT | FINISH COAT DFT | TOTAL DFT MIL. |
| NEW PIPING | Alkyd Modified Chlorinated Rubber, One Coat @ 1 Mil. DFT. | Vinyl, Two Coats @ 5 Mil. DFT. ea. | 11 |
| NEW VALVES | White Pigments, One Coat @ 1.5 Mil. DFT. | Flat Latex, Two Coats @ 1.5 Mil. DFT. Each | 4.5 |
| NEW PUMPING UNITS | Alkyd Modified Chlorinated Rubber, One Coat @ 1 Mil. DFT. | Vinyl, Two Coats @ 5 Mil. DFT. ea. | 11 |
| PUMP ROOM WALLS (1) | One Coat Latex Sealer | Vinyl, Two Coats @ 5 Mil. DFT. ea. | 15 |
| ROOF HATCHES | Vinyl-Epoxy Primer W/Zinc Chromate, One Coat @ 0.3 Mil. | Vinyl, Two Coats @ 5 Mil. DFT ea. | 10.3 |
| NEW MISCELLANEOUS STEEL | Alkyd Modified Chlorinated Rubber, One Coat @ 1 Mil. DFT. | Vinyl, Two Coats @ 5 Mil. DFT ea. | 11 |

- NOTES
- North end wall, South end wall, wall area of Pumps 1A & 2A Discharge line and any wall surfaces damaged.
 - Colors to be selected, by Engineers, from manufacturers standard color charts.
 - Painting required shall include but is not limited to paint schedule. SEE SPECIFICATION DIVISION 9

| | | |
|--|------------------------|--------------|
| DATE | REVISION | BY |
| METER VAULT MECHANICAL AND ELECTRICAL DETAILS | | |
| PUMPS 1A & 2A | | |
| BELTWOOD PUMP STATION | | |
| DALLAS WATER UTILITIES | | |
| CITY OF DALLAS, TEXAS | | |
| DESIGN | R.O.J., E.H.H., A.C.P. | CONTRACT NO. |
| DRAWN | W.E.M., L.M. | 81-7 |
| TRACED | | FILE NO. |
| CHECKED | | 640Q-700 B |
| DATE | DEC 1980 | SHEET NO. |
| | | 9 |
| | | OF 20 |

