

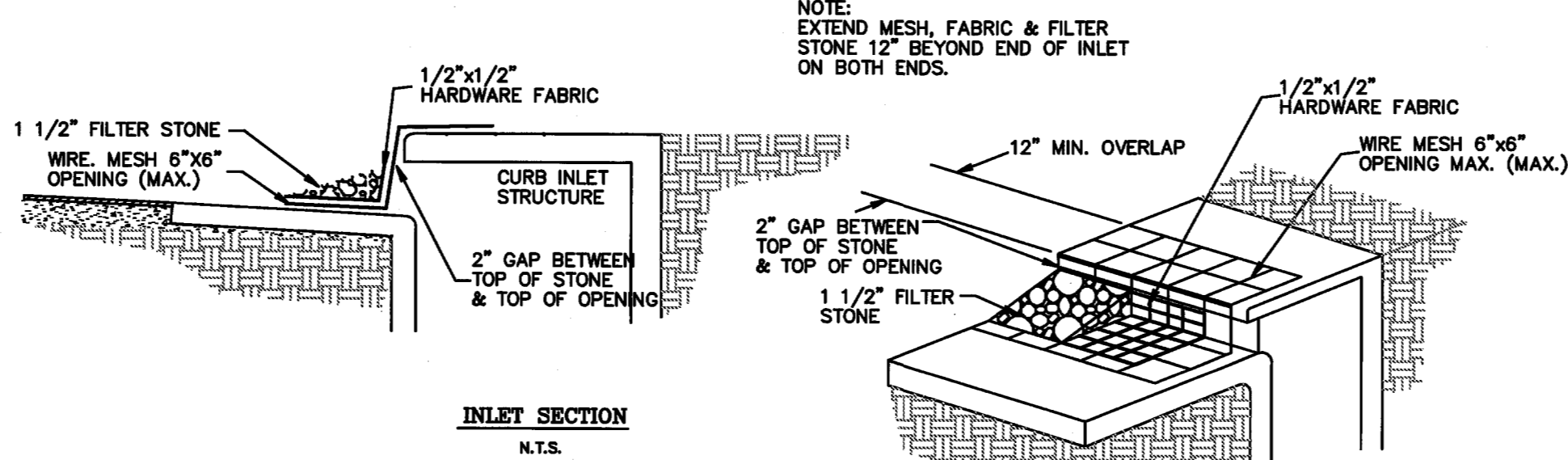
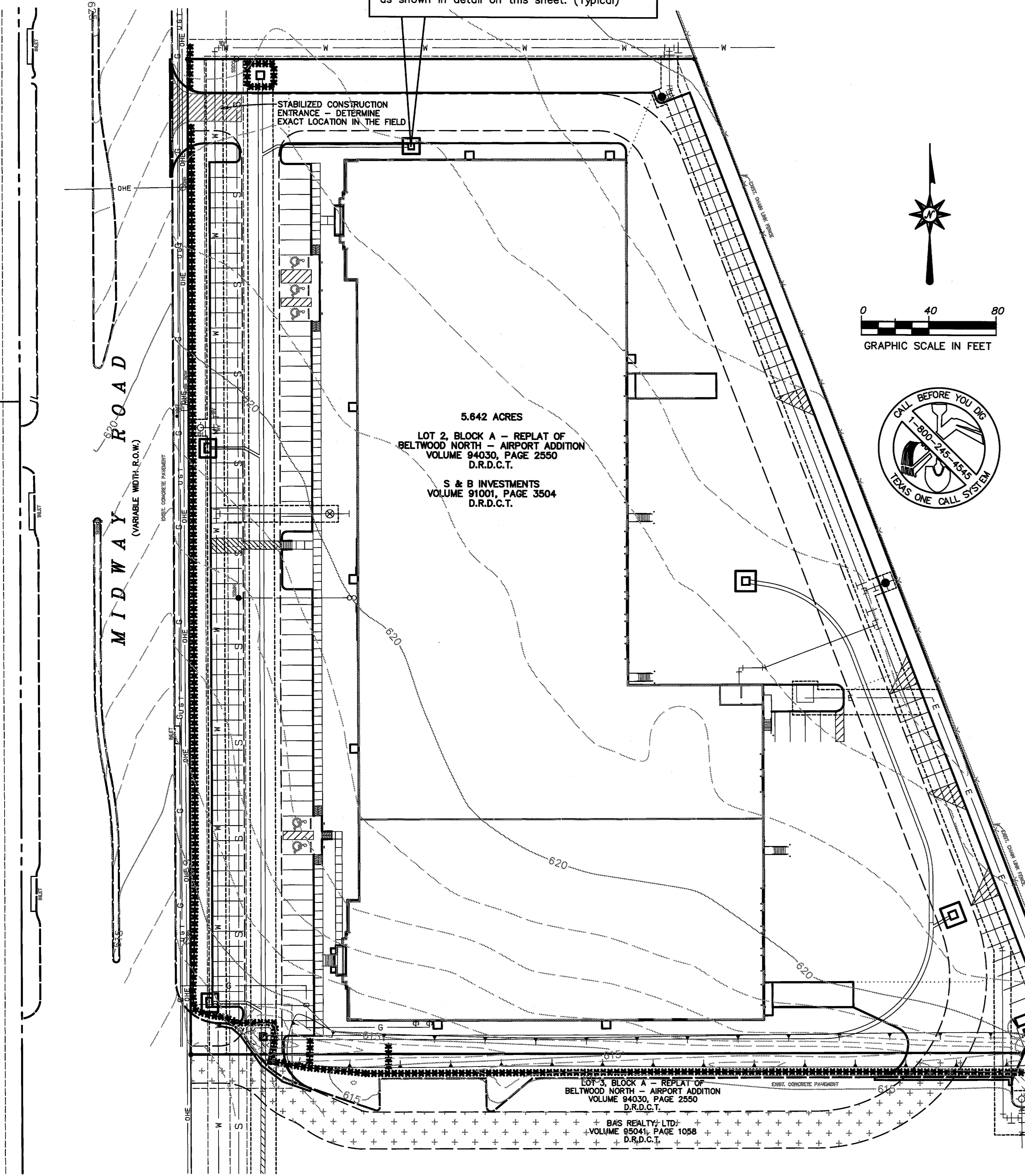
**BENCHMARKS**  
TOWN OF ADDISON B.M.#7:  
SQUARE CUT ON TOP OF AN INLET AT THE  
NORTHWEST CORNER OF SUNBELT & WESTGROVE  
ELEV. = 628.54'

TxDOT (furnished by TOWN OF ADDISON) COA-8:  
2" BRASS DISK STAMPED "TxDOT COA-8 GPS"  
LOCATED ON TOP OF AN INLET 200± SOUTHEAST  
OF THE INTERSECTION OF KELLER SPRINGS &  
MIDWAY ON THE EAST SIDE OF MIDWAY ROAD.  
ELEV. = 638.75'

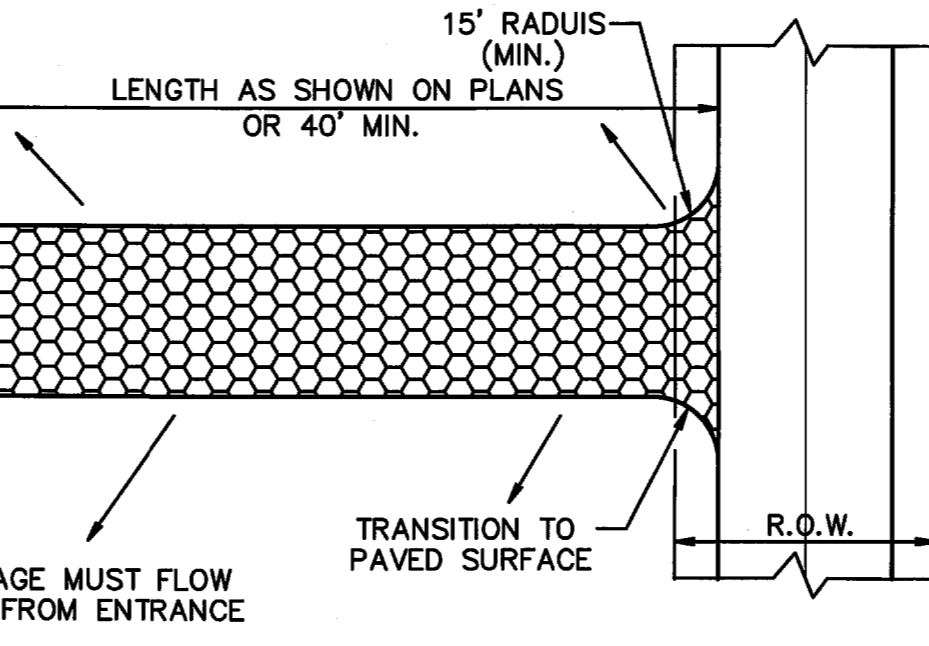
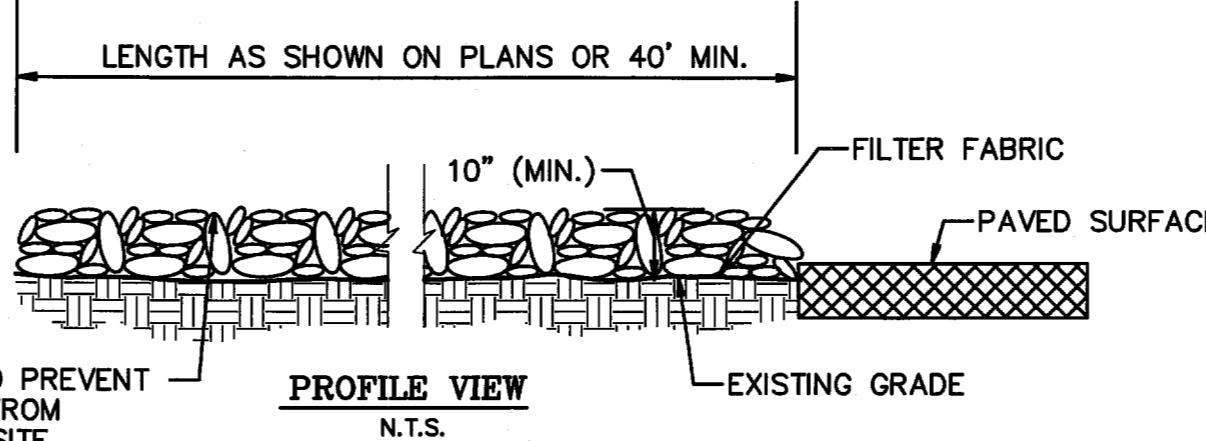
**ABBREVIATIONS LEGEND**  
MIN. FF = MINIMUM FINISHED FLOOR ELEV.  
RCP = REINFORCED CONCRETE PIPE (DRAINAGE)  
TR = TELEPHONE RISER  
WV = WATER VALVE  
FH = FIRE HYDRANT  
SSMH = SANITARY SEWER MANHOLE  
PP = POWER OR UTILITY POLE  
OHE = OVERHEAD POWER OR UTILITY LINE  
ROW = RIGHT-OF-WAY  
C = CENTERLINE  
PL = PROPERTY LINE  
BL = BUILDING LINE  
DE = DRAINAGE EASEMENT  
UE = UTILITY EASEMENT  
SSE = SANITARY SEWER EASEMENT  
WE = WATER LINE EASEMENT  
TUE = T.U. UTILITY EASEMENT

**!!! CAUTION !!!**  
NUMEROUS UNDERGROUND  
UTILITIES MAY EXIST IN THE VICINITY.  
CONTRACTOR DETERMINE EXACT  
LOCATIONS PRIOR TO ANY  
EXCAVATION!

Utility Contractor shall protect inlets from silt  
by plugging inlet until pavement is constructed.  
When inlet top is constructed, utility contractor  
shall install filter fabric inlet erosion protection  
as shown in detail on this sheet. (Typical)

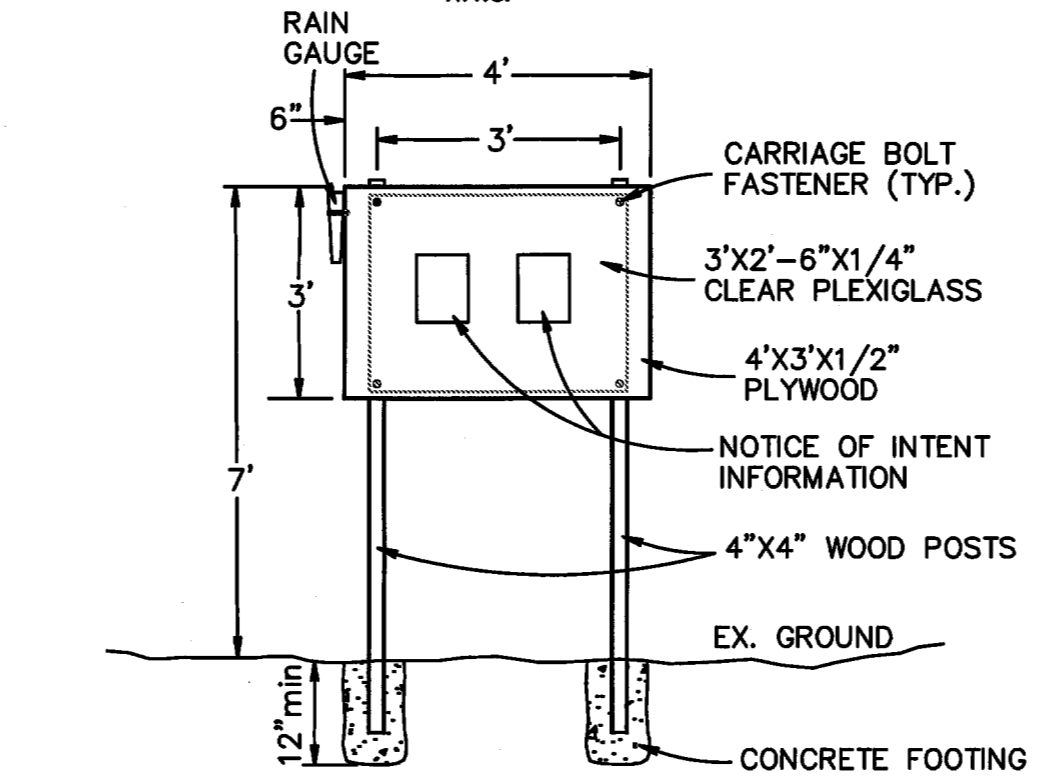


**INLET PROTECTION**  
N.T.S.



- CONST. ENTRANCE GENERAL NOTES:**
- Crushed stone for construction entrance shall be 2"-3" at greatest dimension and shall be installed to a compacted depth of 10 inches.
  - Filter fabric is to be Marafi 100X or equal. (Marafi, Inc.: 800-438-1855)
  - If construction entrance crosses a drainage ditch, swale, etc., a drainage pipe shall be installed with min. 12 inches cover of crushed stone.

**STABILIZED CONSTRUCTION ENTRANCE**  
N.T.S.

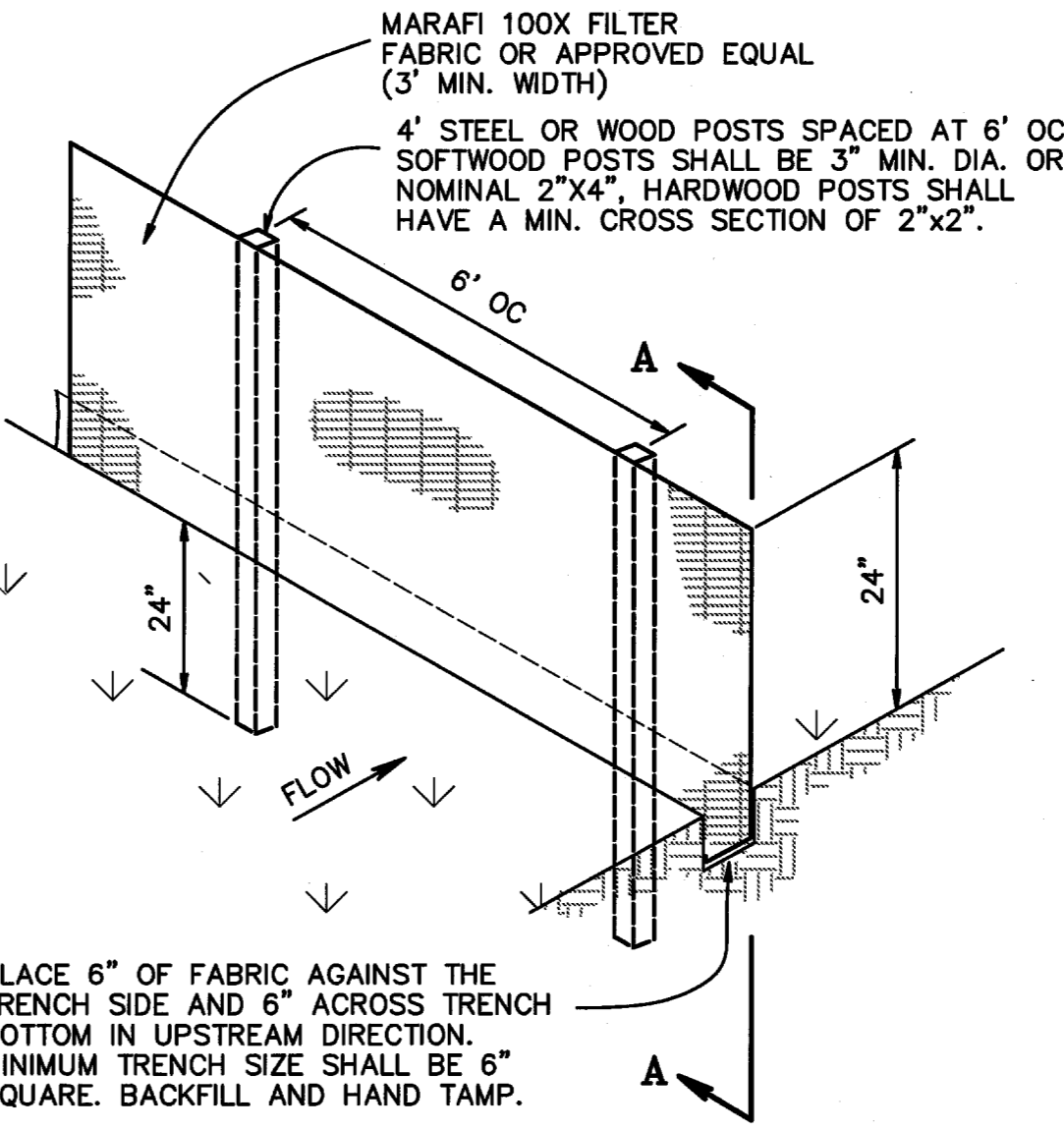
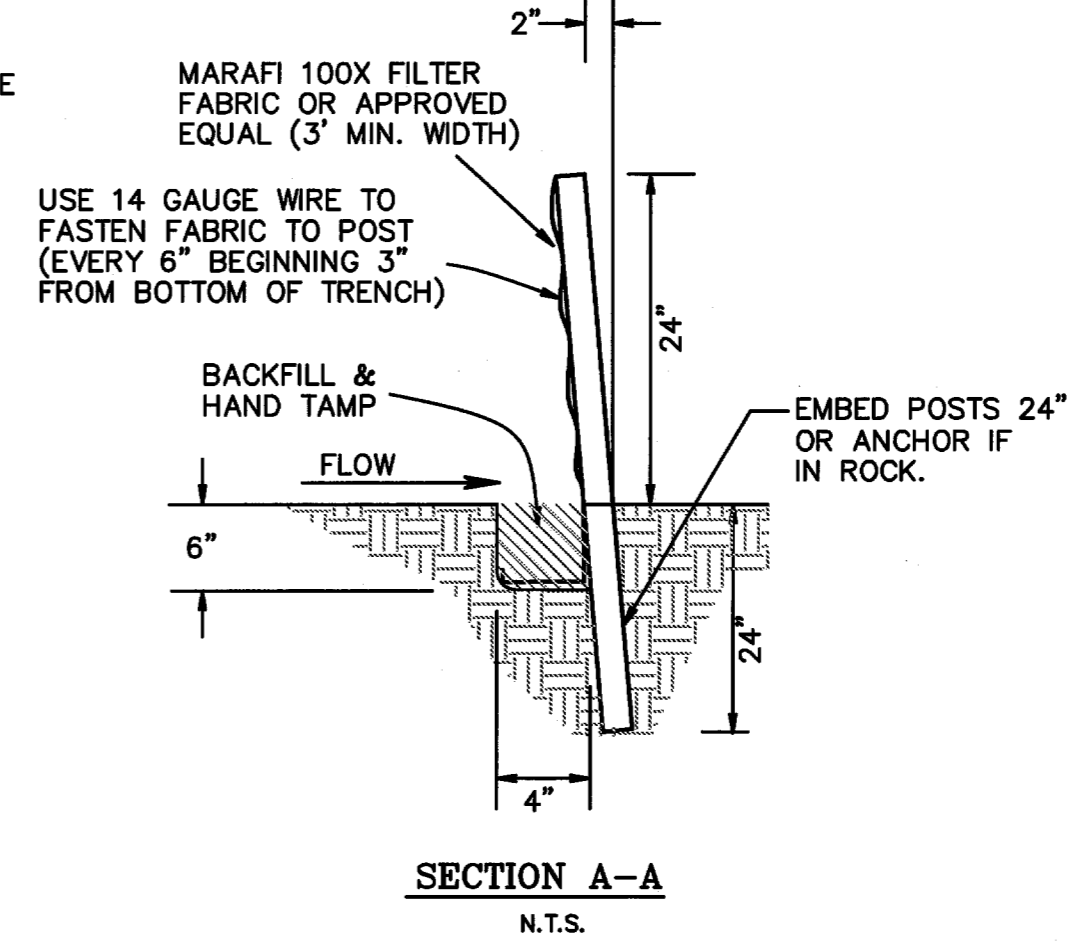


**N.O.I. SIGN BOARD**  
N.T.S.

Silt Fence Erosion Control to be installed by the Earthwork Contractor prior to stripping site as shown in details. Exact fence location should be coordinated with the Owner & Engineer prior to installation. (TYPICAL)

**OWNER & DEVELOPER**  
**S & B INVESTMENTS**  
P.O. BOX 700008  
DALLAS, TEXAS 75370  
PHONE: 972.735.8855  
FAX: 972.735.8896  
CONTACT: VICTOR A. SAHM, JR.

- SILT FENCE GENERAL NOTES:**
- The toe of the silt fence shall be trenched in with a spade or mechanical trencher, so that the downslope face of the trench is flat and perpendicular to the line of flow.
  - The trench should be a minimum of six inches deep and four inches wide to allow for the silt fence to be laid in the ground and backfilled.
  - Silt fence should be securely fastened to each support post.
  - Inspection shall be frequent and repair or replacement shall be made promptly as needed.
  - Silt fence shall be removed when it has served its usefulness, so as not to block or impede storm flow or drainage.
  - Sediment trapped by this practice shall be disposed of in an approved site in a manner that will not contribute to additional siltation.
  - Accumulated silt shall be removed when it reaches a depth of six inches and disposed of in an approved spoil site or as in No. 6 above.
  - At point of surface flow concentration reinforce silt fence with wire mesh backing on downstream side of fence.
  - Filter fabric is to be Marafi 100X or approved equal. (Marafi, Inc.: 800-438-1855)



**SILT FENCE EROSION CONTROL**  
N.T.S.

- GENERAL NOTES FOR THE EROSION CONTROL PLAN**
- All operators and/or contractors shall conform to the terms and conditions of the National Pollution Discharge Elimination System (NPDES) General Permit and all applicable requirements of the Texas Commission on Environmental Quality (TCEQ) and the Environmental Protection Agency (EPA). All erosion control operations and devices shall be in accordance with the current City Sediment and Erosion Control Ordinance.
  - The Notice of Intent (NOI), as required by the General Permit, must be properly displayed on site at all times by each operator.
  - All releases of reportable quantities of hazardous substances shall be reported immediately to the facility operator, TCEQ and the EPA.
  - The Contractor shall inspect the site at least once every fourteen days and within 24 hours of a 1/2-inch or greater rainfall event. The Contractor shall document the results. Copies of the inspection reports shall accompany the Contractor's monthly pay request.
  - If the Erosion Control Plan, as approved cannot control pollution and off-site sedimentation from the project, then revisions to the plan will be required and additional pollution control devices may be required on site. Modifications to the Storm Water Pollution Prevention Plan shall be implemented and be in-place within a seven calendar day period. All changes are to be approved by the design engineer and the City.
  - If any contractor sees a violation by an operator or another contractor, he shall notify the operator and contractor in violation, as well as the facility operator and the owner.
  - Erosion control measures as shown on the Erosion Control Plan shall be installed prior to the start of land disturbing activities in that area.
  - Accumulated silt deposits shall be removed from silt fences and hay bale dikes when silt depth reaches six inches. Removal of silt deposits by the contractor shall be incidental to the performance of the contract and a separate bid item shall not be included.
  - The contractor shall add or delete erosion protection at the request and direction of the inspector, engineer or the City.
  - After installation of pavement, final site grading and general cleanup, the grass groundcover shall be established in all parking lot medians and all other disturbed areas. Materials shall be as specified in the landscape plans or per Item 2.15 and seeding shall be in accordance with Item 3.10 of the NCTCOG Standard Specifications.
  - It shall be the contractor's responsibility to control and limit silt and sediment leaving the site. Specifically, the contractor shall protect all public streets, alleys, streams and storm drainage systems from erosion deposits.
  - If any erosion control is removed for construction and/or access purposes, the contractor shall replace it at the end of the work day.
  - It shall be the contractor's responsibility to provide a dumpster (or equivalent) to collect solid waste materials during construction. The containers shall be hauled to a landfill by the Contractor.
  - The attached Drainage Area Map, as prepared by PEAK XV ENGINEERING GROUP, INC. specifically for this project, shall be made part of the Storm Water Pollution Prevention Plan.
  - All hazardous materials shall be handled and disposed of by the contractor in accordance with Federal, State and Local regulations.
  - It is anticipated that the following non-storm water discharges may be associated with this project. These discharges are authorized through the construction general permit:  
A. Fire hydrant flushings  
B. Water used to wash vehicles and to control dust  
C. Potable water sources including waterline flushings  
D. Irrigation drainages  
E. Pavement washdown  
F. Uncontaminated ground water  
G. Construction water
  - Upon completion of fine grading by Paving and Grading Contractor, all areas not otherwise permanently stabilized shall be seeded and maintained until a uniform coverage of 75% minimum density, as determined by the Owner's representative and the City is achieved.
  - Site entry and exit locations shall be maintained in a condition which will prevent tracking or flowing of sediment onto public roadways. All sediment spilled, dropped, washed or tracked on a public roadway must be removed immediately. When washing is required to remove sediment prior to entrance to a public roadway, it shall be done on an area stabilized with crushed stone which drains into an approved sediment basin. The contractor is responsible for any citations and/or fines resulting from tracked sediment in the public roadways.
  - If off-site soil borrow or spoil sites are used by the contractor in conjunction with this project, this information shall be disclosed and added to the Erosion Control Plan. Off-site borrow and spoil areas are considered a part of the project site and therefore shall comply with the Erosion Control Plan. These areas shall be stabilized with permanent ground cover prior to final approval of the project.
  - A Storm Water Pollution Prevention Plan (SWPPP) Narrative will be prepared by the Owner's Representative and distributed to the Contractors prior to the start of construction. That Narrative and this Erosion Control Plan (drawings), together make up this project's SWPPP.

- LEGEND**
- \*\*\*\*\* SILT FENCE/ EROSION CONTROL DEVICE ON-SITE CONTRACTOR TO MAINTAIN UNTIL PROJECT COMPLETION
  - STABILIZED CONSTRUCTION ENTRANCE
  - INLET EROSION CONTROL DEVICE
  - ROCK CHECK DAM
  - SILT FENCE CHECK DAM
  - DIRECTION OF FLOW
  - EXISTING CONTOURS

NO.	REVISIONS NUMBER	BY	DATE
5	Revised per City of Carrollton/Released for Construction	CAC	06/01/09
4	Revised per the TOWN OF ADDISON	CAC	05/07/09
3	Revised per the TOWN OF ADDISON	CAC	04/24/09
2	Revised per the TOWN OF ADDISON	CAC	04/02/09
1	Submitted to the TOWN OF ADDISON	CAC	01/26/09

RELEASED ON 06/01/09 FOR CONSTRUCTION

CECIL A. CHESHER  
92674  
LICENSED PROFESSIONAL ENGINEER

THE SEAL APPEARING ON THIS DOCUMENT WAS AUTHORIZED BY CECIL A. CHESHER, P.E. #92674

**EROSION CONTROL PLAN**  
(LOT 2, BLOCK A) RE-PLAT OF  
BELTWOOD NORTH - AIRPORT ADDITION  
TOWN OF ADDISON, DALLAS COUNTY, TEXAS

4009 CLIPPER COURT  
PLANO, TX 75023-5609  
PHONE 469.261.6840  
FAX 972.985.7121  
www.peakxv.com

Job Number: 18-0701  
Sheet Number: C2.1