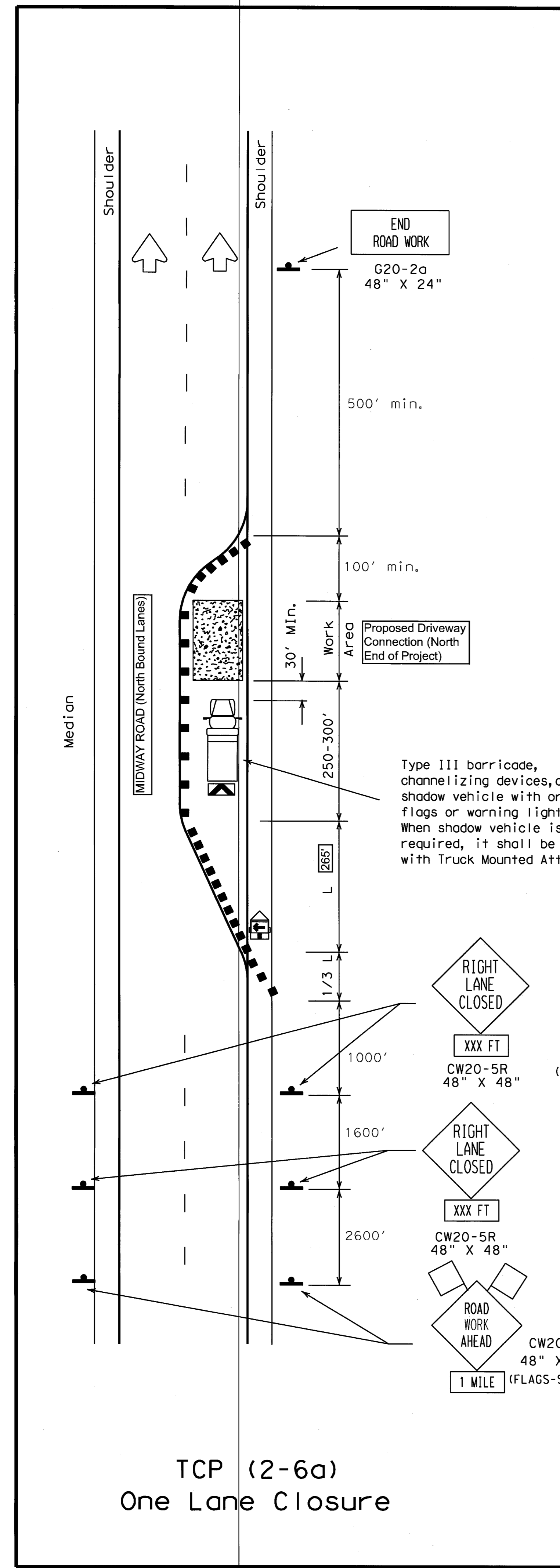
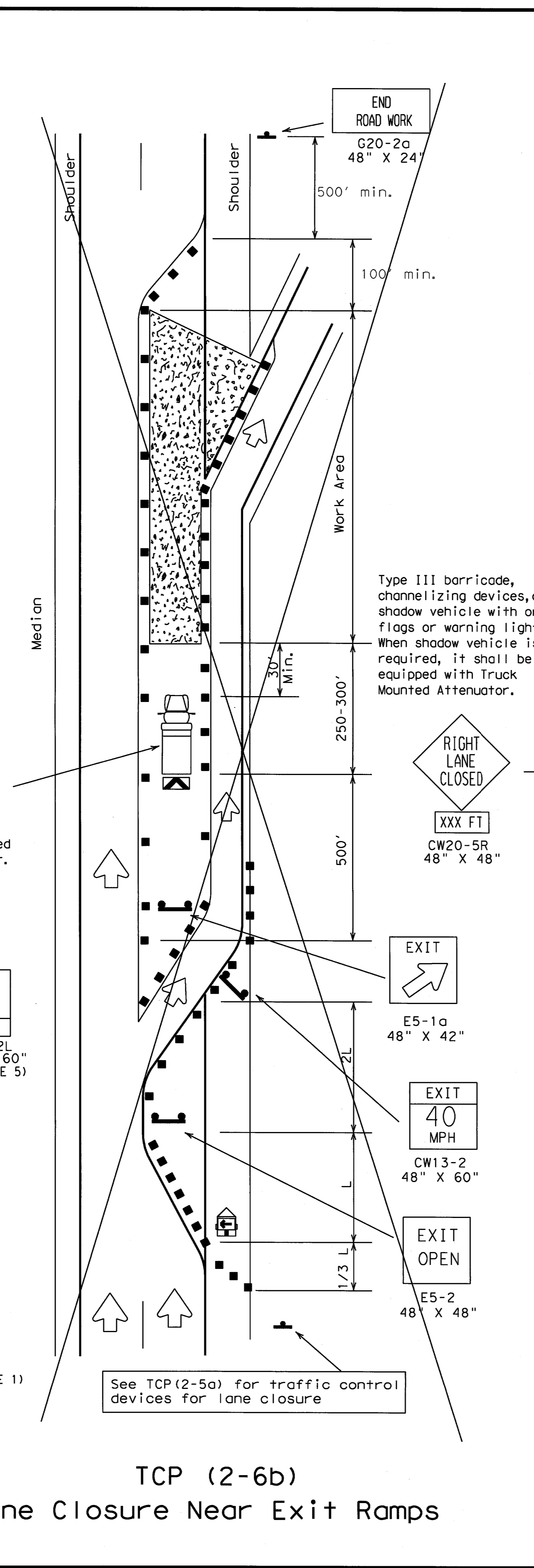


DISCLAIMER
The use of this standard is governed by the "Texas Engineering Practice Act". No warranty of any kind is made by TxDOT for any purpose whatsoever. TxDOT assumes no responsibility for the conversion of this standard to other formats or for incorrect results or damages resulting from its use.

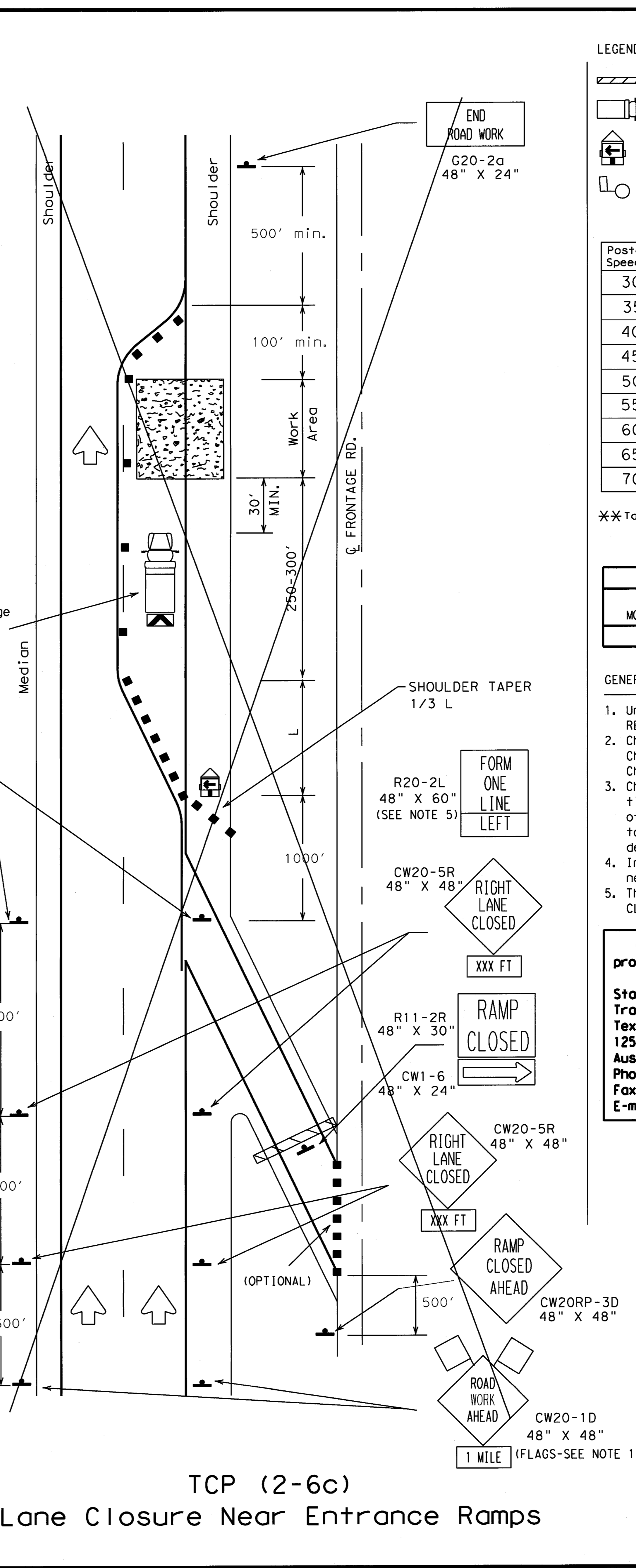
DN: _____			
CK: _____			
DW: _____			
CK: _____			
DATE: _____			
ACC: _____			
FILE: _____			
LEVELS DISPLAYED			
1	2	3	4
5	6	7	8
9	10	11	12
13	14	15	16
17	18	19	20
21	22	23	24
25	26	27	28
29	30	31	32
33	34	35	36
37	38	39	40
41	42	43	44
45	46	47	48
49	50	51	52
53	54	55	56
57	58	59	60
61	62	63	64
65	66	67	68
69	70	71	72
73	74	75	76
77	78	79	80
81	82	83	84
85	86	87	88
89	90	91	92
93	94	95	96
97	98	99	100



TCP (2-6a)
One Lane Closure



TCP (2-6b)
Lane Closure Near Exit Ramps



TCP (2-6c)
Lane Closure Near Entrance Ramps

LEGEND

- Type III Barricade
- Channelizing Devices
- Flag
- Heavy Work Vehicle
- Truck Mounted Attenuator
- Trailer Mounted Flashing Arrow Panel
- Portable Changeable Message Sign
- Flagger
- Sign Post

Posted Speed	Formula	Minimum Desirable Taper Lengths **			Suggested Maximum Spacing of Device	
		10' Offset	11' Offset	12' Offset	On a Taper	On a Tangent
30	L = $\frac{WS^2}{60}$	150'	165'	180'	30'	60' - 75'
35		205'	225'	245'	35'	70' - 90'
40		265'	295'	320'	40'	80' - 100'
45	L = WS	450'	495'	540'	45'	90' - 110'
50		500'	550'	600'	50'	100' - 125'
55		550'	605'	660'	55'	110' - 140'
60		600'	660'	720'	60'	120' - 150'
65		650'	715'	780'	65'	130' - 165'
70		700'	770'	840'	70'	140' - 175'

** Taper lengths have been rounded off.
L=Length of Taper (FT.) W=Width of Offset (FT.) S=Posted Speed (MPH)

TYPICAL USAGE:

	MOBILE	SHORT DURATION	SHORT TERM STATIONARY	INTERMEDIATE TERM STATIONARY	LONG TERM STATIONARY
				✓	✓

- GENERAL NOTES:
- Unless otherwise stated in the plans, flags attached to signs are REQUIRED.
 - Channelizing devices used to close lanes may be supplemented with the Chevron Alignment Sign placed on every other channelizing device. Chevrons may be attached to plastic drums as per BC Standards.
 - Channelizing devices used along the work area or along tangent sections may be supplemented with vertical panels (VP) placed on every other channelizing device. If night time conditions make it difficult to see at least two VP's, the VP's may be placed on each channelizing device.
 - In areas with safety lighting or continuous illumination the channelizing devices can be supplemented with delineators.
 - The FORM ONE LINE LEFT sign may be used following the RIGHT LANE CLOSED sign.

Only pre-qualified products shall be used. A list of compliant products and their sources may be obtained by writing or faxing:

Standards Engineer
Traffic Operations Division - TE
Texas Department of Transportation
125 East 11th Street
Austin, Texas 78701-2483
Phone (512) 416-3335
Fax (512) 416-3161
E-mail TRF-STANDARD@mailgw.dot.state.tx.us

The requirement for shadow vehicles will be listed in the project GENERAL NOTES, Item 502, Barricades, Signs and Traffic Handling.

STANDARD PLANS
TEXAS DEPARTMENT OF TRANSPORTATION
Traffic Operations Division

TRAFFIC CONTROL PLAN

TCP (2-6) - 98

© TxDOT December 1985 DW - LR CK - MT DW - DN CK - DM NEG. NO. 1

REVISIONS	STATE	FEDERAL REGION	FEDERAL AID PROJECT	SHEET
2-94	6			C9.6
8-95				
1-97				
4-98				