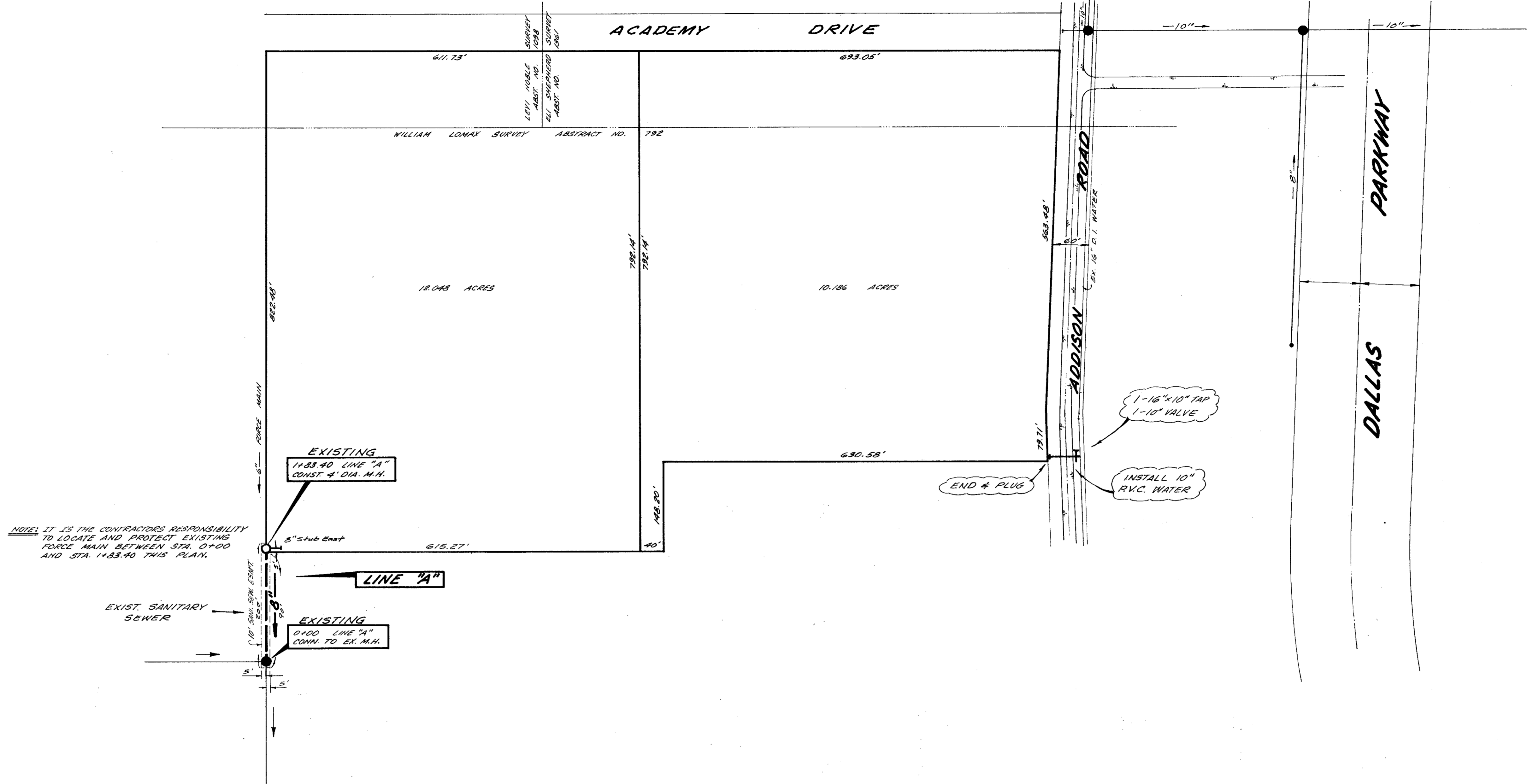
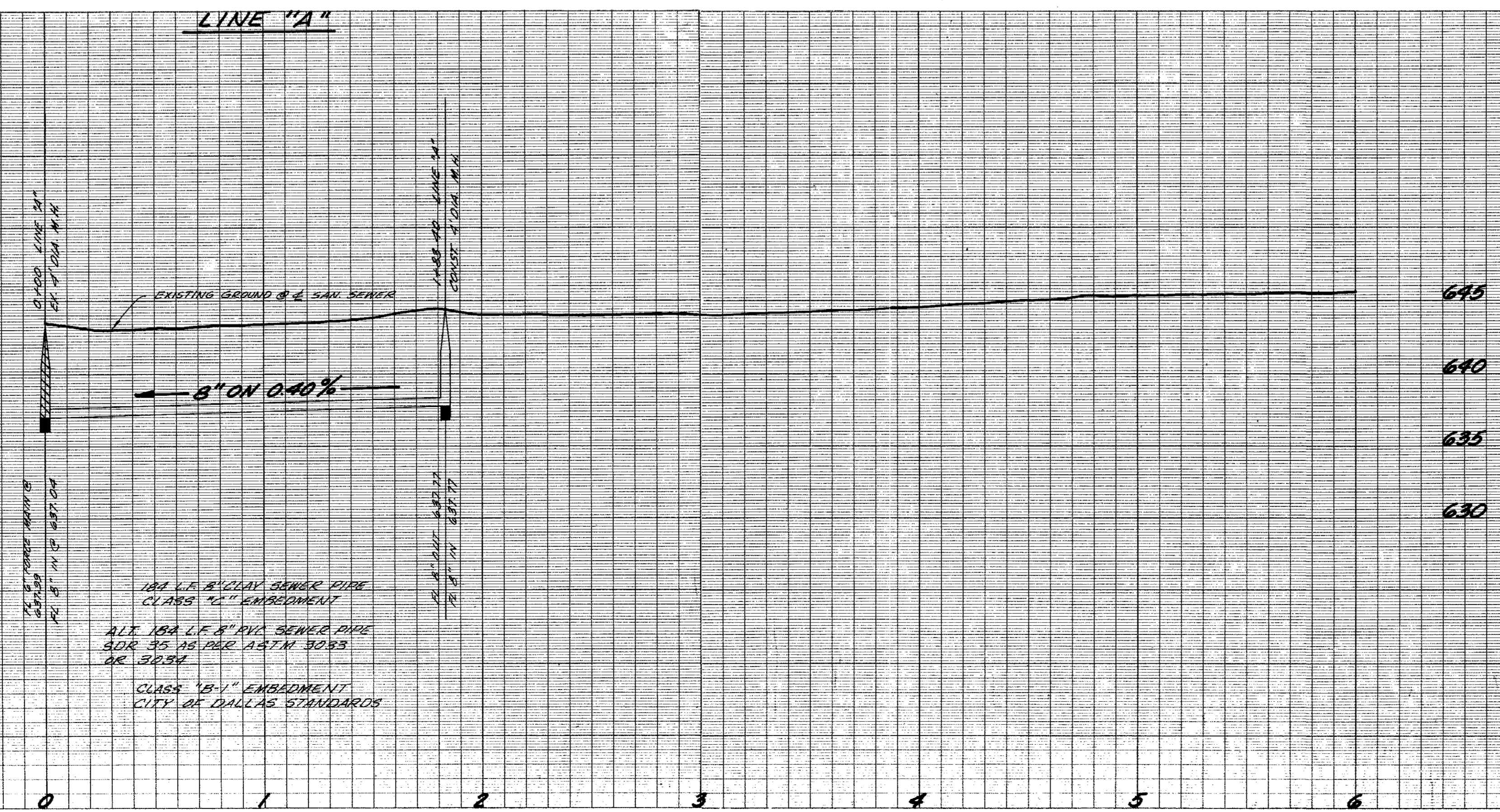




SCALE: 1"=100'



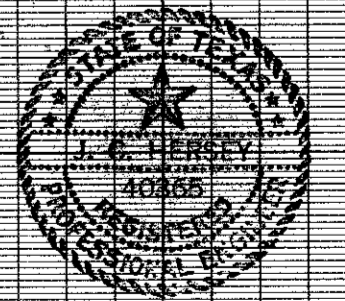
NOTE: IT IS THE CONTRACTORS RESPONSIBILITY TO LOCATE AND PROTECT EXISTING FORCE MAIN BETWEEN STA. 0+00 AND STA. 1183.40 THIS PLAN.



NOTE: IT WILL BE THE CONTRACTORS RESPONSIBILITY TO VERIFY THE LOCATION AND TO PROTECT ALL EXISTING UTILITIES.

BELOW MARKS: NAIL IN THE WEST SIDE OF DODDLEY ROAD AND APPROX. 230' NORTH OF SOUTHWEST CORNER OF THE TEXAS CHRISTIAN ACADEMY TRACT. ELEV. 660.88.

18" L.F. 8" CLAY SEWER PIPE CLASS "C" EMBEDMENT
 ALL 18" L.F. 8" PVC SEWER PIPE SDR 35 AS PER A.S.T.M. 3053 OR 3054
 CLASS "B-1" EMBEDMENT CITY OF DALLAS STANDARDS



WATER & SEWER PLANS
 BENT TREE TOWERS APARTMENTS
 ADDISON ROAD
 ADDISON WATER UTILITIES
 CITY OF ADDISON, TEXAS

DESIGN	DRAWN	DATE	SCALE	NOTES	FILE	NO.
T.F.D.	T.D.K.	AUG. '77	1"=6' V	T.F.D.		