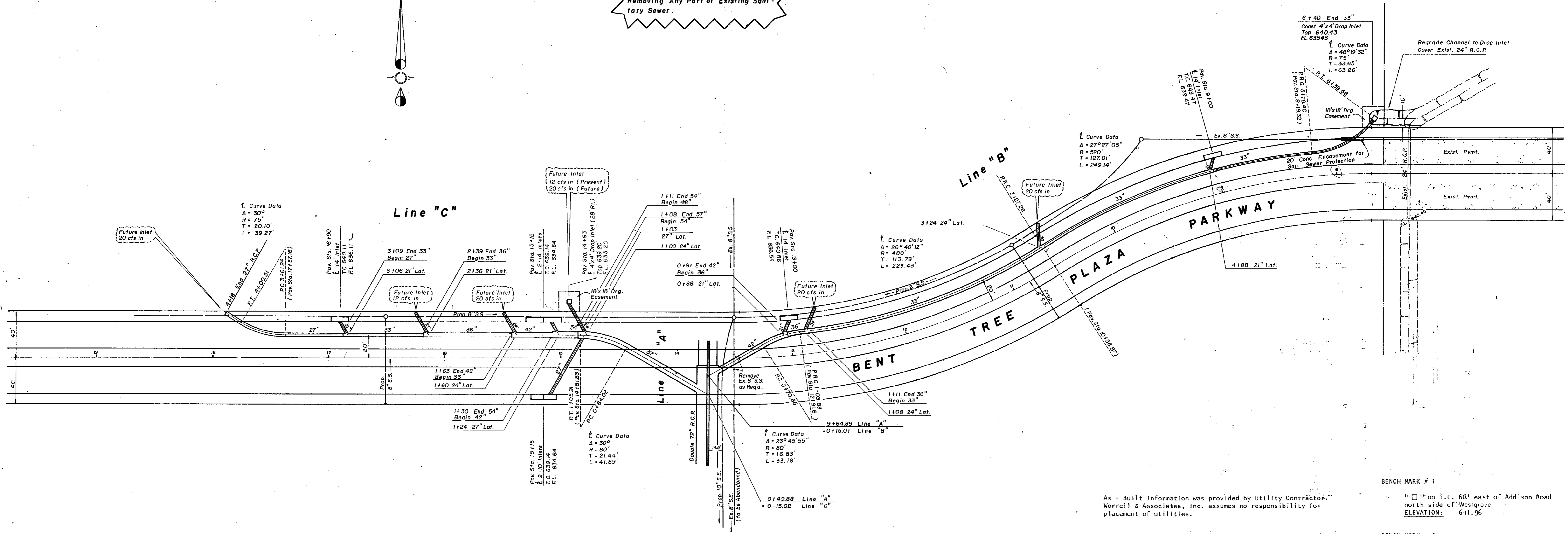
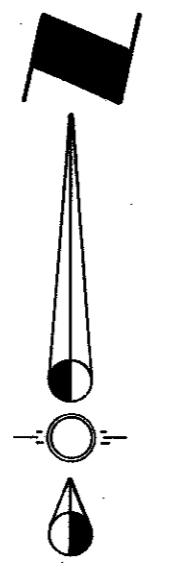


NOTE: New Sanitary Sewer Must Be Constructed and Approved Before Removing Any Part of Existing Sanitary Sewer.



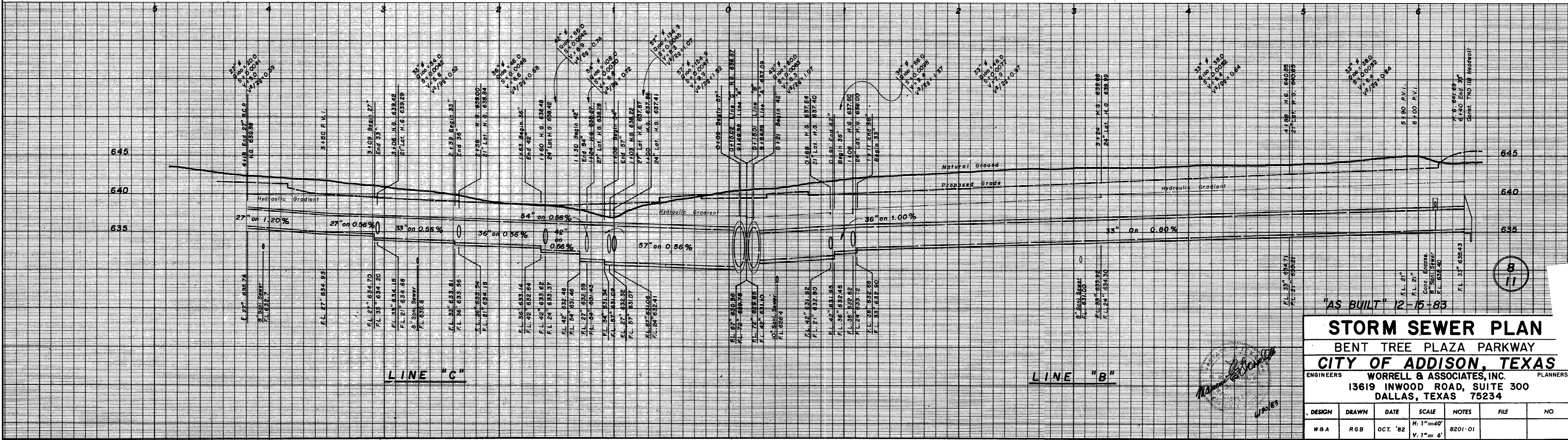
As - Built Information was provided by Utility Contractor: Worrell & Associates, Inc. assumes no responsibility for placement of utilities.

BENCH MARK # 1
 "□" on T.C. 60' east of Addison Road north side of Westgrove
 ELEVATION: 641.96

The contractor is responsible to preserve the final alignment and grade stakes as set by the engineer until the completed pavement is accepted by the City. In the event stakes are lost, the engineer accepts no responsibility for pavement alignment or grade.

BENCH MARK # 2
 "□" on T.C. 100'± north of Sir Lancelot Drive, west side of Addison Road
 ELEVATION: 642.49

All R.C.P. to be Class III.



AS BUILT 12-15-83

STORM SEWER PLAN
 BENT TREE PLAZA PARKWAY
CITY OF ADDISON, TEXAS
 ENGINEERS: **WORRELL & ASSOCIATES, INC.** PLANNERS
 13619 INWOOD ROAD, SUITE 300
 DALLAS, TEXAS 75234

DESIGN	DRAWN	DATE	SCALE	NOTES	FILE	NO.
WBA	RGB	OCT. '82	H: 1"=40' V: 1"= 4'	8201-01		