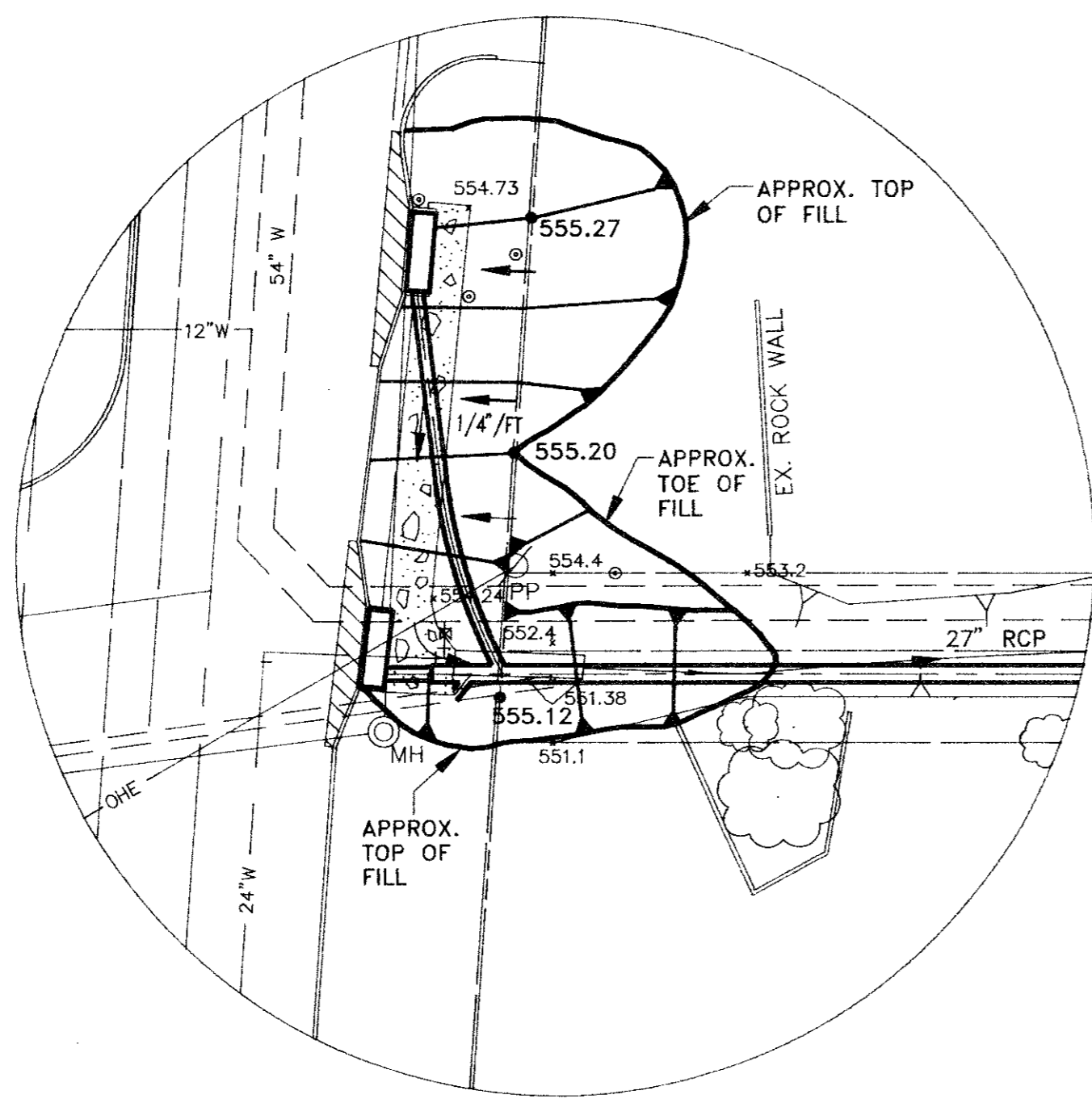


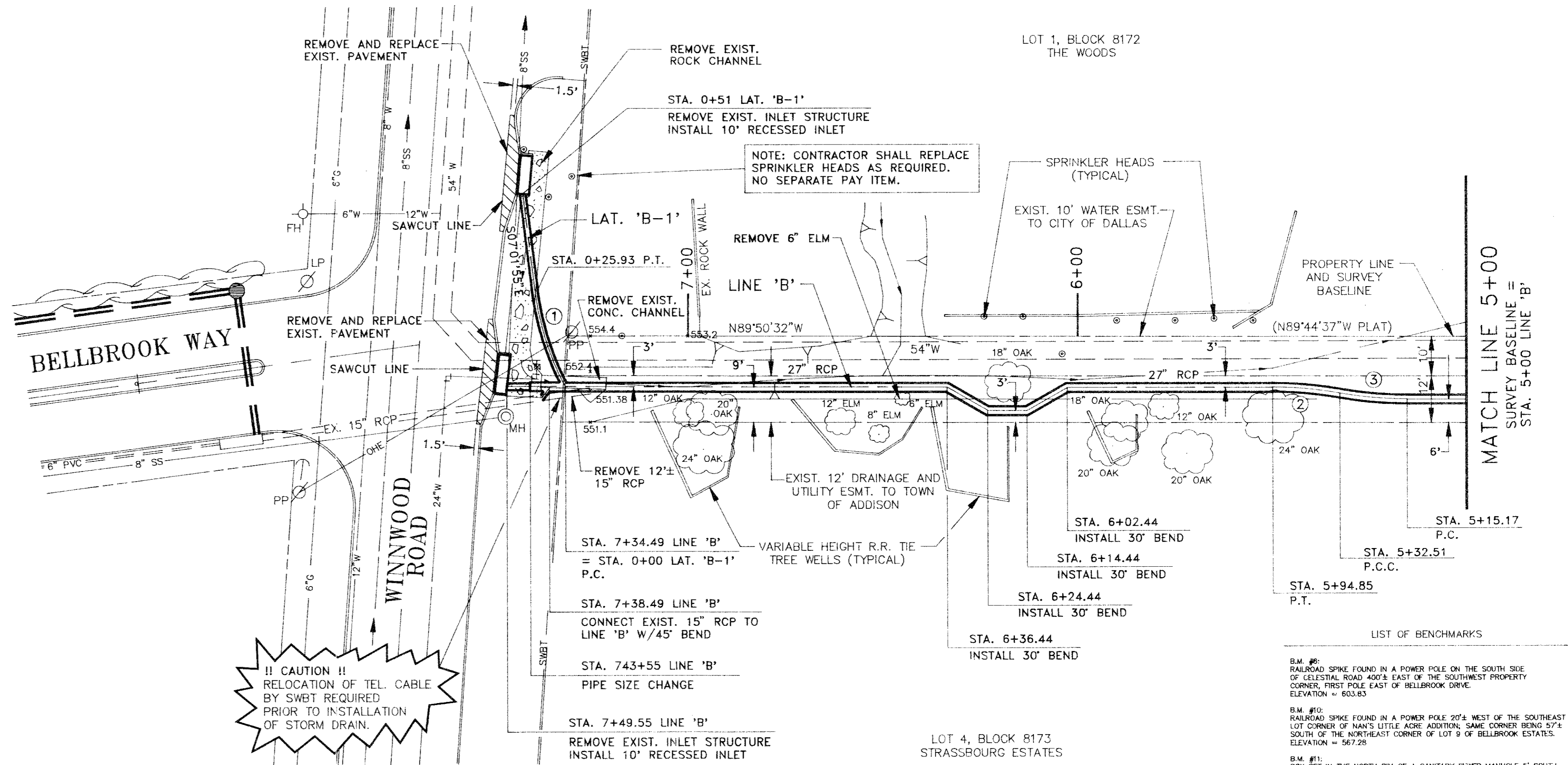
CURVE DATA		
①	②	③
$\Delta = 21'13.32"$	$\Delta = 9'56.11"$	$\Delta = 9'56.11"$
$R = 70'$	$R = 100'$	$R = 100'$
$L = 25.93'$	$L = 17.34'$	$L = 17.34'$
$T = 13.12'$	$T = 8.69'$	$T = 8.69'$

GRADING NOTES

1. TOP OF FILL/TOE OF FILL LIMITS ARE APPROXIMATE ONLY. CONTRACTOR SHALL CONFIRM LIMITS WITH ENGINEER IN FIELD PRIOR TO COMMENCING WORK.
2. BERMUDA SOD SHALL BE PLACED ON ALL FILL WITHIN APPROXIMATE LIMITS SHOWN ON THE GRADING PLAN.
3. ALL FILL SHALL BE COMPACTED TO 95% STANDARD PROCTOR DENSITY IN MAXIMUM 8-INCH LIFTS.
4. ALL FILL SHALL BE VOID OF DEBRIS AND ROCKS.
5. CONTRACTOR SHALL PROTECT AND ADJUST THE EXISTING IRRIGATION SYSTEM.



GRADING PLAN

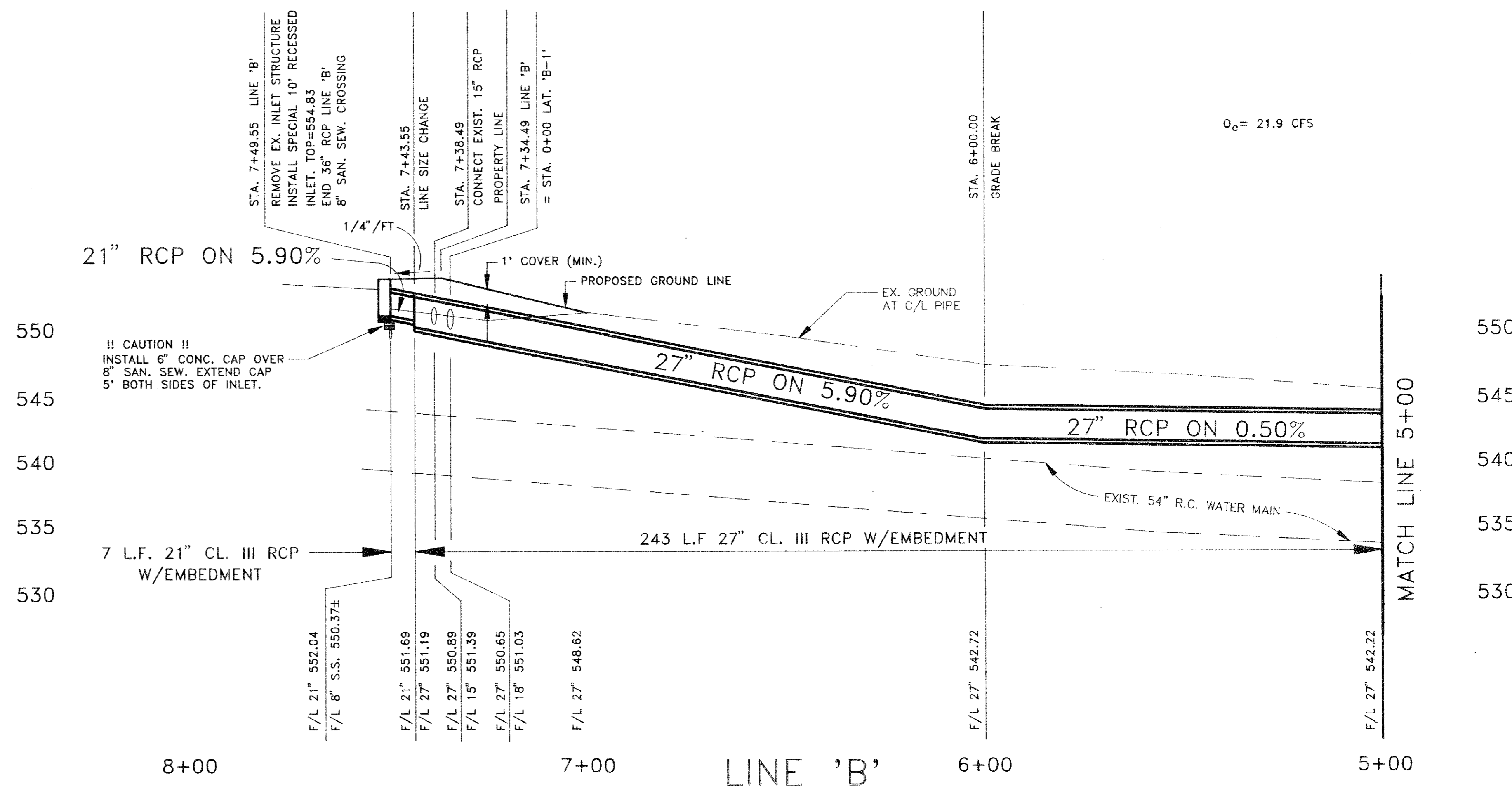
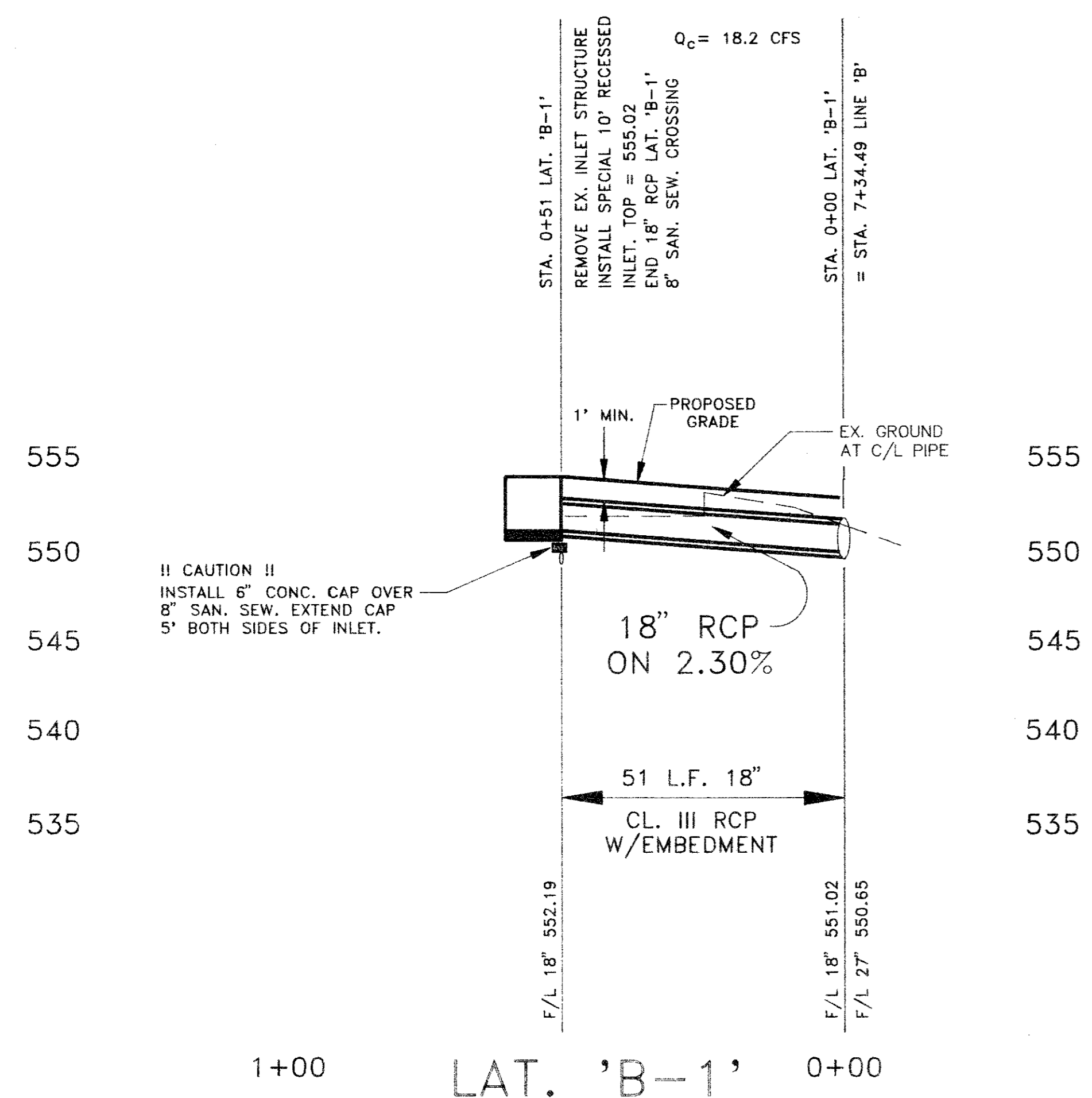


LIST OF BENCHMARKS

B.M. #6: RAILROAD SPIKE FOUND IN A POWER POLE ON THE SOUTH SIDE OF CELESTIAL ROAD 400'S EAST OF THE SOUTHWEST PROPERTY CORNER. FIRST POLE EAST OF BELLBROOK DRIVE. ELEVATION = 653.83

B.M. #8: RAILROAD SPIKE FOUND IN A POWER POLE 20' WEST OF THE SOUTHWEST LOT CORNER OF MAN'S LITTLE ASSE ADDITION. SAME CORNER BEING 27' SOUTH OF THE NORTHEAST CORNER OF LOT 9 OF BELLBROOK ESTATES. ELEVATION = 567.25

B.M. #11: BOX SET IN THE NORTH RM OF A SANITARY SEWER MANHOLE 5' SOUTH OF THE SOUTH CURB LINE OF BELLBROOK WAY, NEAR THE NORTHEAST CORNER OF LOT 12 OF BELLBROOK ESTATES. ELEVATION = 567.70



NO	REVISION	BY	DATE	DESIGNED BY: J. WALDBAUER DRAWN BY: C. PARKER CHECKED BY: B. GRANTHAM SCALE: 1"=6' V, 1"=20' H DATE: JULY 1991			ESPEY, HUSTON & ASSOCIATES, INC. Engineering & Environmental Consultants (214) 669-9600	PHASE 3 DRAINAGE PLAN & PROFILE		SHEET NO. 5
	WINNWOOD/BELLBROOK DRAINAGE PHASES 2 AND 3 for THE TOWN OF ADDISON		OF 6 SHEETS JOB NO. 13404							