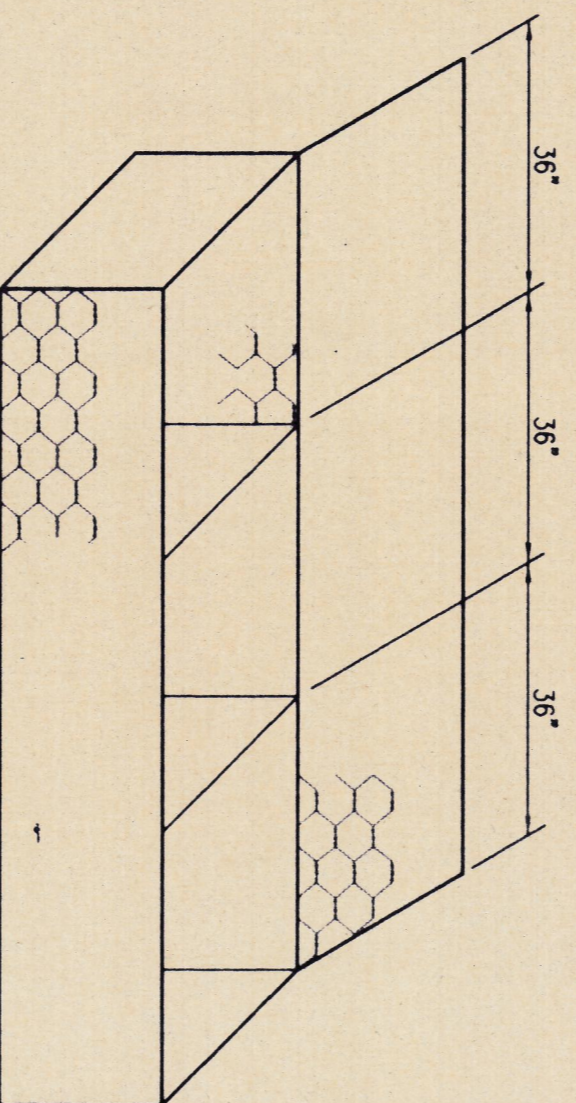


**GABION MAT DETAILS**

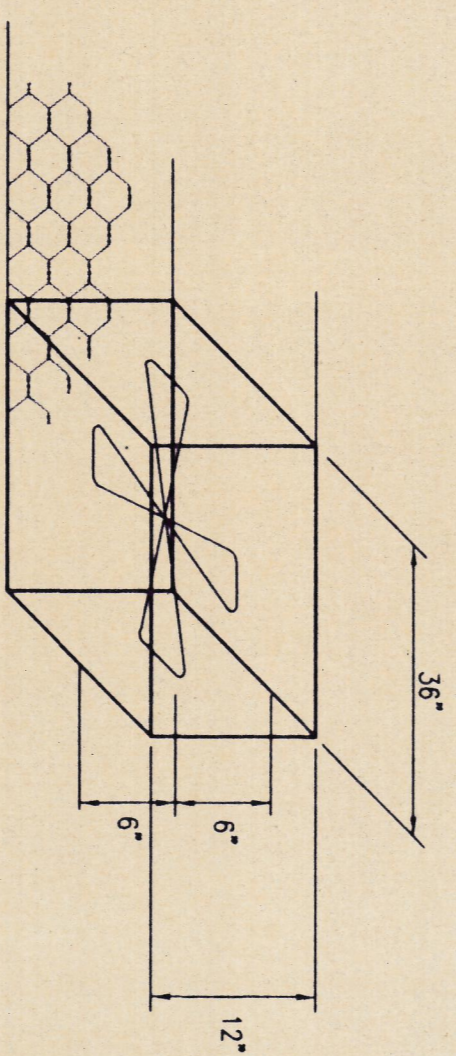
N.T.S.



**GABION CONTAINER**

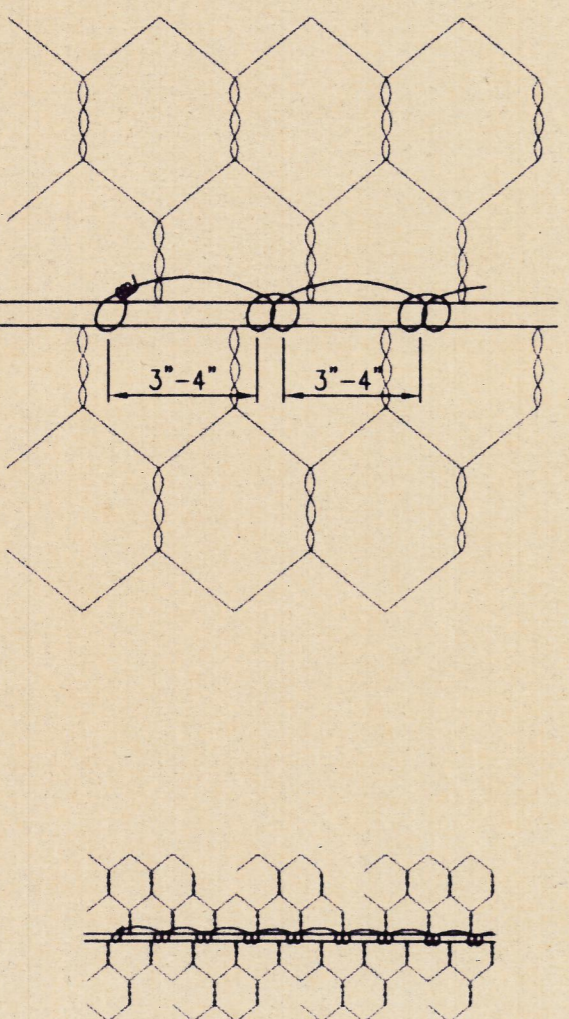
N.T.S.

NOTE:  
GABION MAY BE CUT BUT SHALL BE RETIED IN A MANNER TO PRODUCE A CLOSED CELL AND ALL TIES SHALL BE IN CONFORMANCE WITH DETAILS



**INNER TIE WIRE DETAIL**

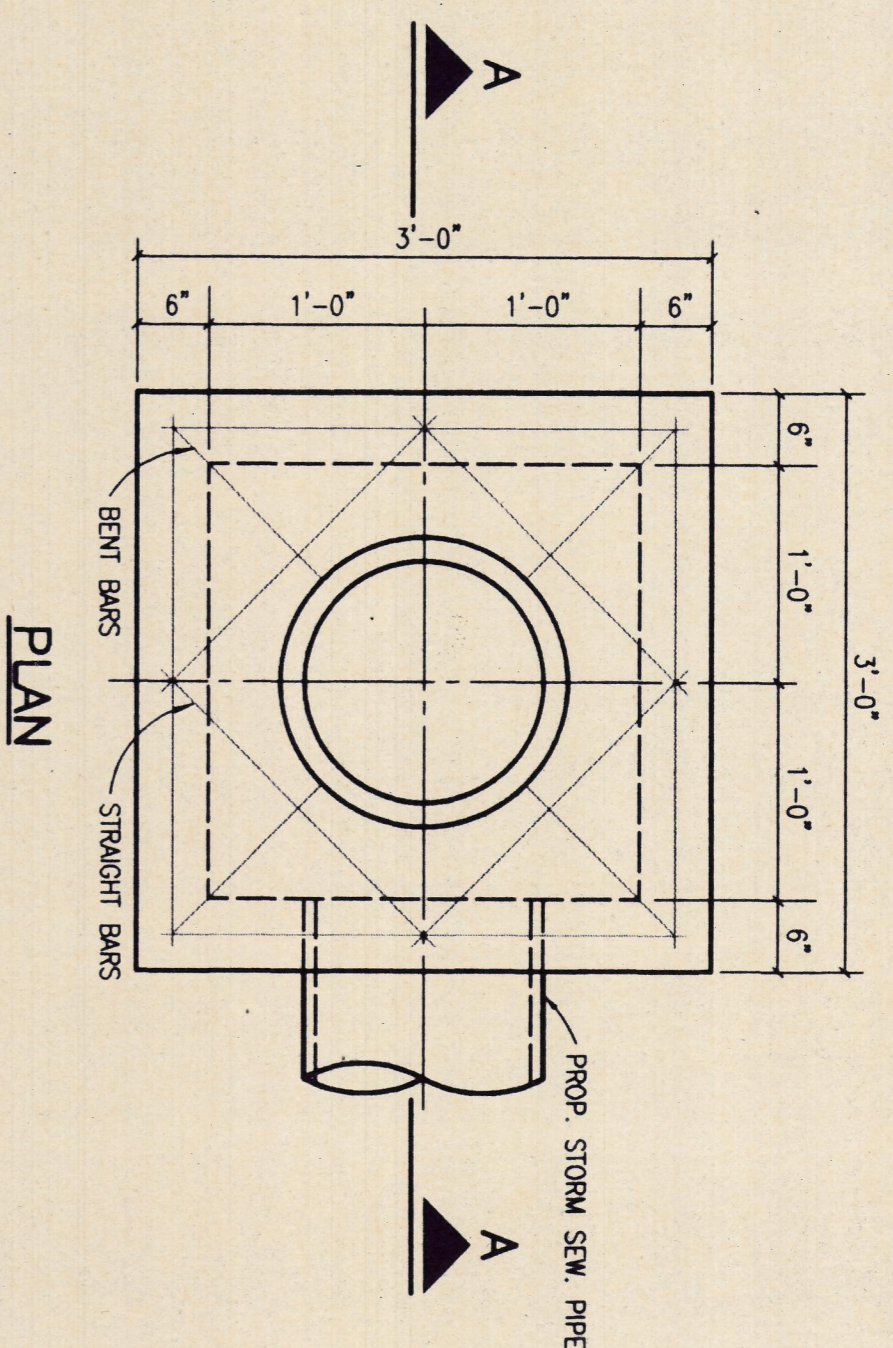
N.T.S.



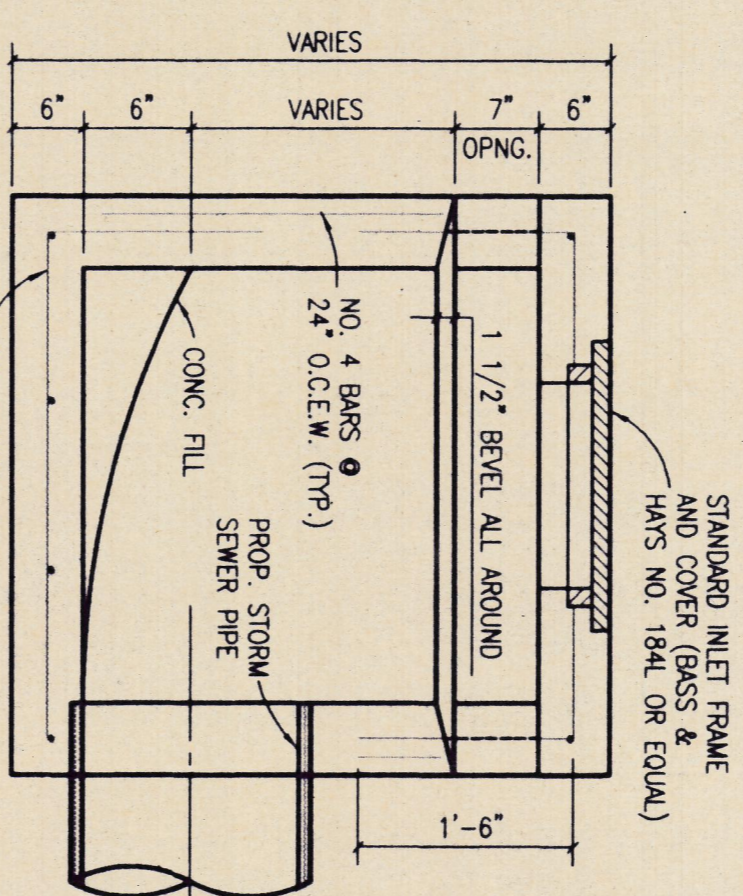
**GABION TIE DETAIL**

N.T.S.

NOTE:  
ALL TYPING OF GABIONS SHALL BE AS SHOWN

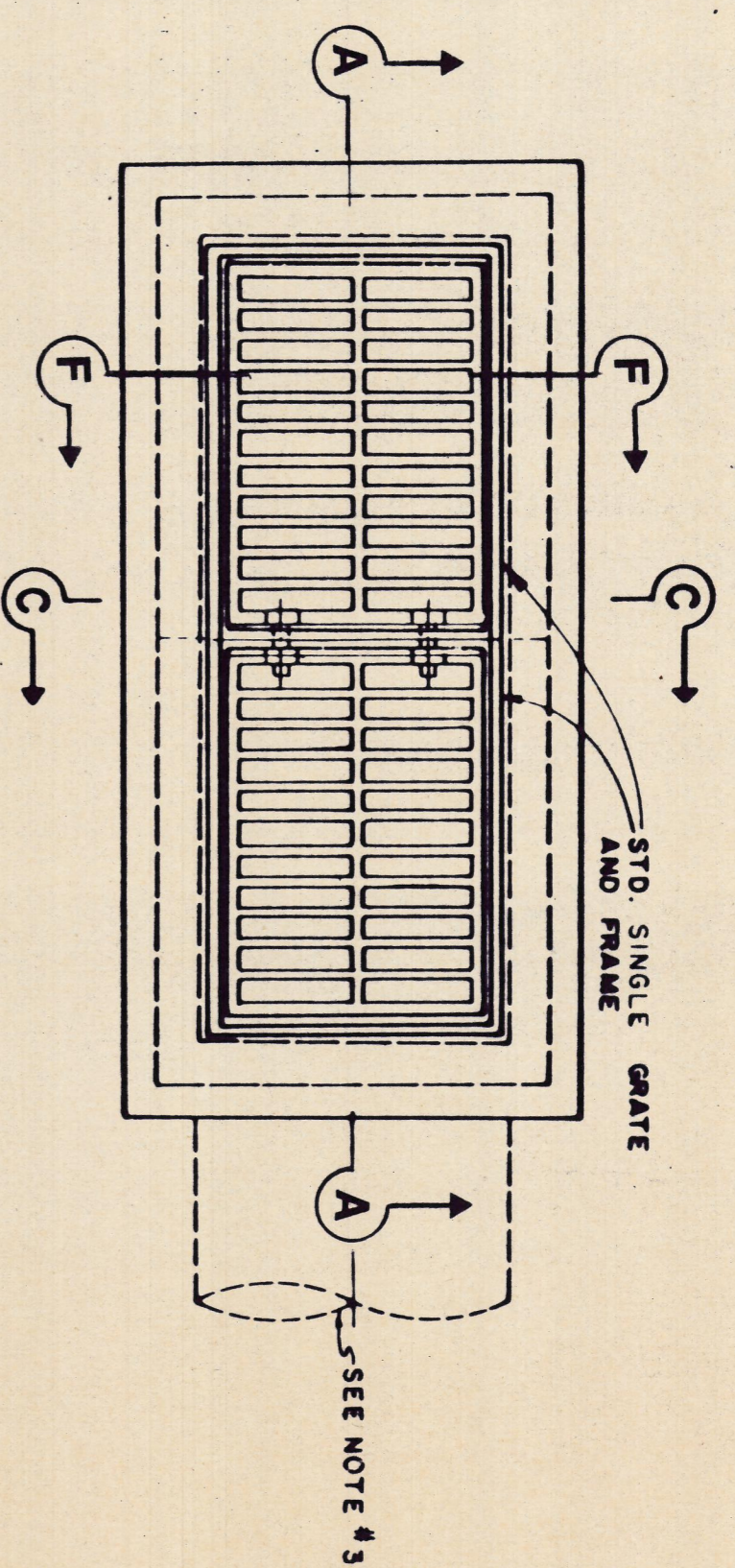


**PLAN**

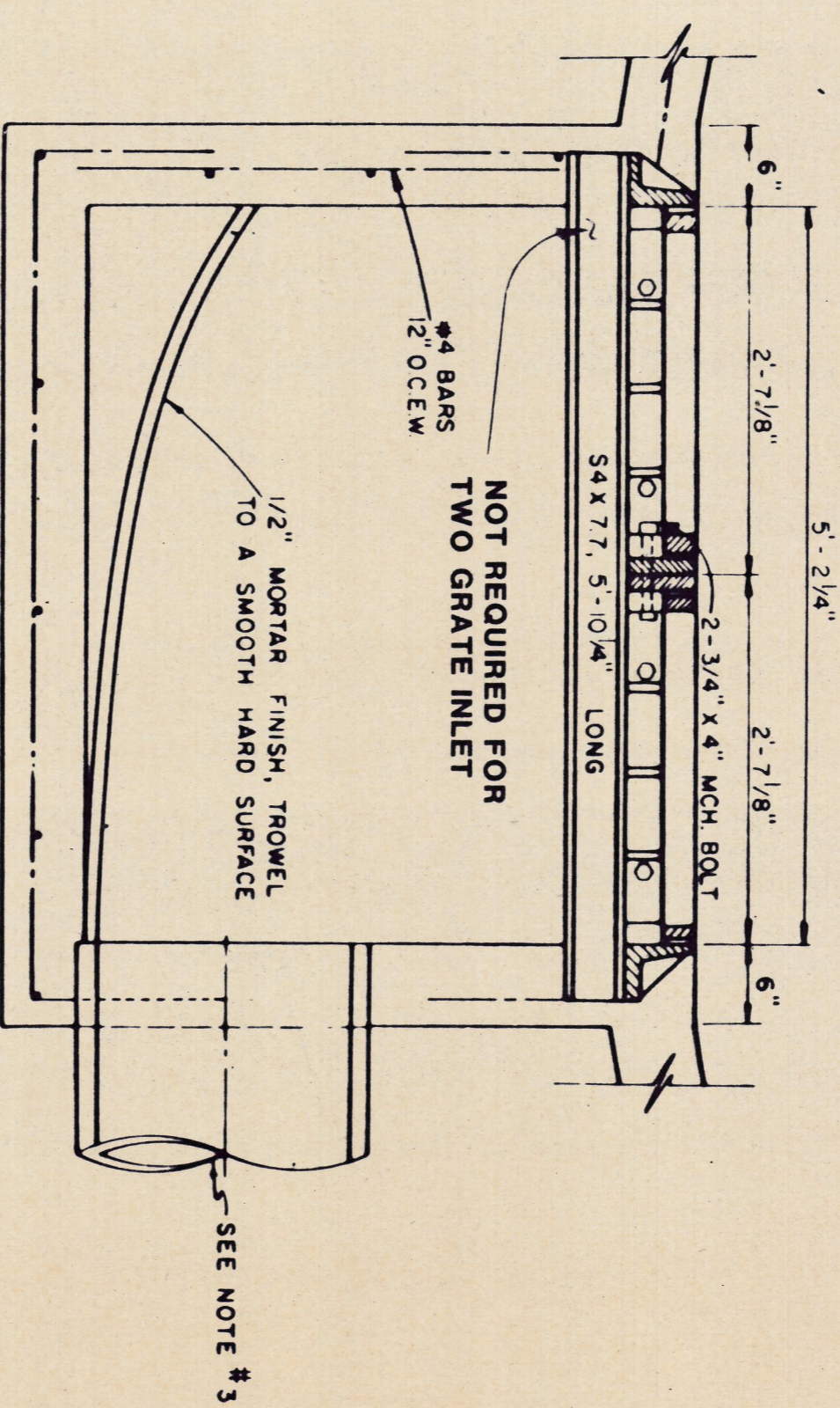


**SECTION A-A**

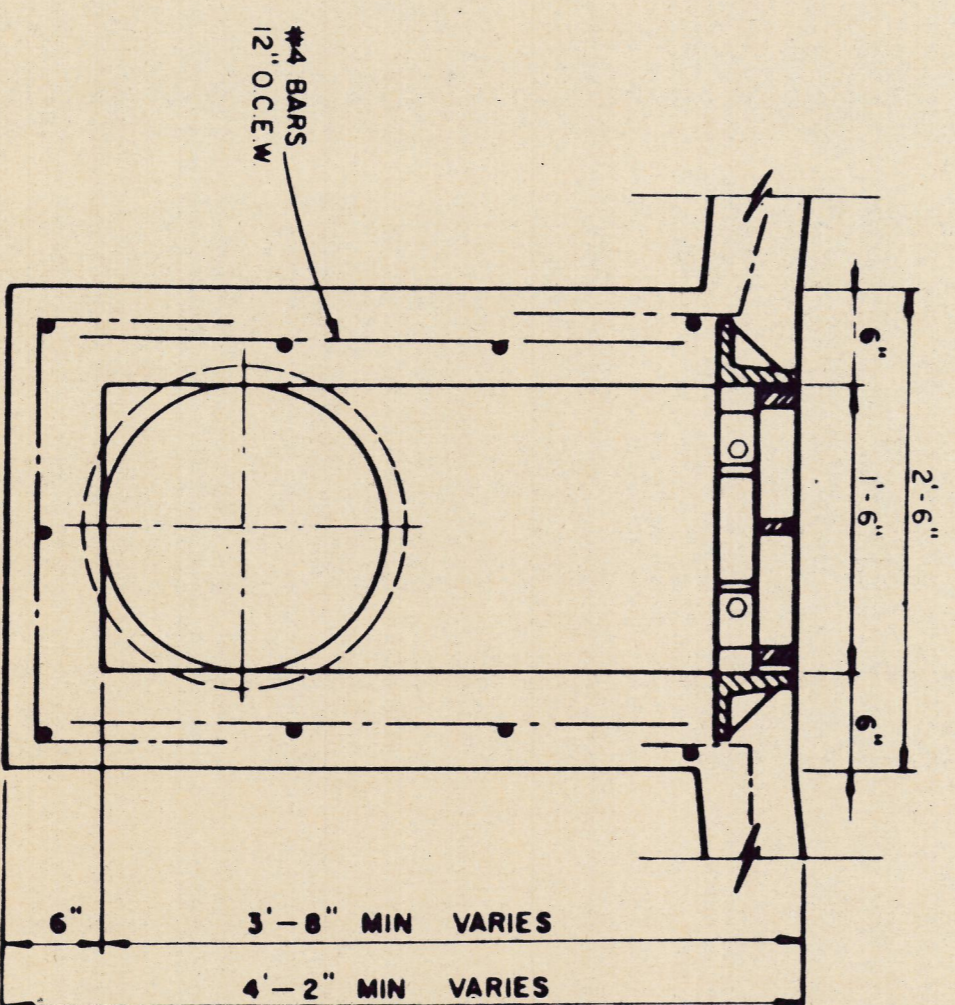
**STANDARD DROP INLET**



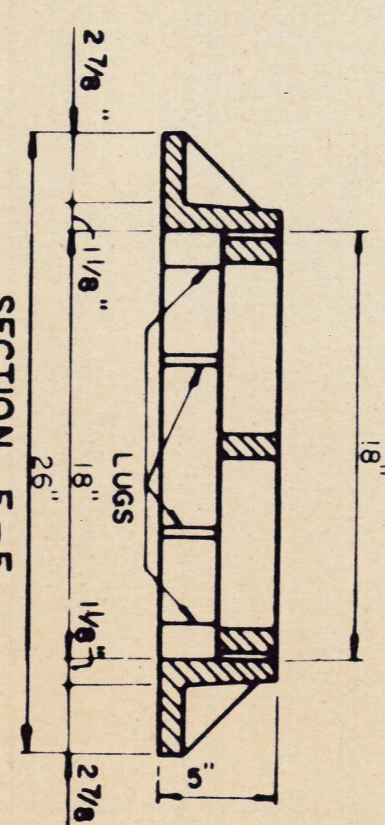
**TWO GRATE INLET**



**SECTION A-A**



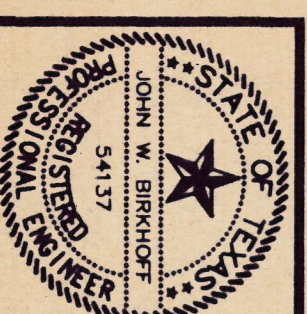
**SECTION C-C**



**SECTION F-F**

- NOTES**
1. ALL LABS AND EXTENSIONS OF REINFORCING BARS SHALL BE 36 BAR DIAMETERS UNLESS NOTED OTHERWISE.
  2. TACK WELD GRATES IN PLACE
  3. PIPE MAY BE PLACED IN ANY WALL BUT SHALL NOT ENTER ANY CORNER OR AT PLASTER.
  4. GRATE AND FRAME SHALL BE PATTERN NO. 814 AS MANUFACTURED BY BASS AND HANS FOUNDARY, OR APPROVED EQUAL.

THESE DOCUMENTS ARE FOR BIDDING, CONSTRUCTION AND PERMIT PURPOSES.  
*John W. Binkhoffer*  
DATE: 11/28/96



**TOWN OF ADDISON, TEXAS**

**DRAINAGE IMPROVEMENTS DETAILS**

DESIGNED BY: J.W.B.  
DRAWN BY: R.L.L.

PROJECT: 951144  
DATE: DECEMBER, 1995

SHIMEK, JACOBS & FINKLEA  
CONSULTING ENGINEERS  
DORIS, TEXAS

SHEET NO. 7  
OF 8 SHEETS